



affinity™
by HILLYARD 



An Innovatively Simple Skin Care System

HILLYARD

The Cleaning Resource®

Innovatively Simple

One reliable, robust system delivering foam, liquid or gel. It's your choice. Fresh new fragrances and bright attractive colors that will appeal to your senses. Add our Green Seal™ certified formulas and you have Affinity by Hillyard, the innovatively simple skin care system.


affinity[™]
by HILLYARD 



af•fin•i•ty: a natural liking for or attraction to

Next Generation Skin Care Technology Available Today

Designed by Hillyard, the company delivering innovative cleaning and hygiene solutions for over 100 years. Our rich heritage includes designing systems dedicated to advancing the health and well-being of our customers. So much so, that our founder, Newton Hillyard, was awarded patents in the early 1930's for innovatively designed hand soap systems.* It's Mr. Hillyard's spirit of innovation that continues on today with Affinity by Hillyard.



One System



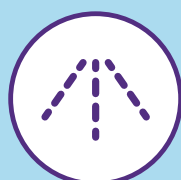
Foam



Liquid



Gel



Spray



* U.S. Patents 1939980 issued 1933, 1945111 and 1947086 issued in 1934.

Sustainably Engineered

- Space-saving dispenser design utilizes 25% less plastic by weight than other 1,250* mL dispensers without compromising reliability or durability.
- Crystal clear, easily recyclable, super thin, yet super strong bi-directionally molded PET bottles and thoughtfully designed pumps utilize up to 50% less plastic than other 1,250* mL refills.




affinity™
by HILLYARD

*Touch-free refills are 1,000 mL.

Unrelenting Quality Tested for Trouble-free Performance

Every part of our system is thoroughly tested. Formulas, pumps, bottles and dispensers. On-staff microbiologists constantly monitor quality while components are rigorously tested.

The pump is one of the most critical components of any soap system. It must be durable to withstand thousands of activations, yet simple enough to be part of a cost-effective, sealed, and disposable refill. The Affinity pump strikes the perfect balance.

EVERY Affinity pump goes through a series of automated tests. After a pump passes ALL of its tests, the data is recorded and a unique id number is stamped on its side.

Many pumps might be designed for trouble-free performance. Affinity pumps are designed AND tested for trouble-free performance. Every single one of them!



Sustainable Formulation



USDA Certified Biobased Product - Only by choosing biobased products labeled "USDA Certified Biobased Products" can the consumer be assured that the USDA and the Federal government stand behind the accuracy of the claim that the product contains biological ingredients in the amounts stated on the label. Manufacturers and vendors who have obtained the rights to use the BioPreferred label on a product have submitted to USDA test evidence of the biobased content of the product or package.



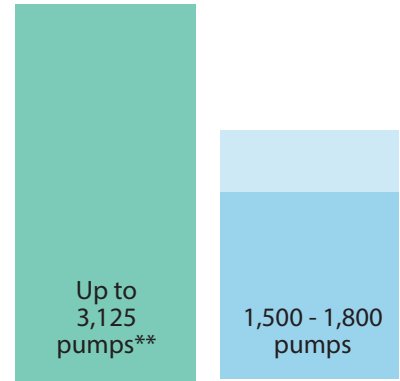
Green Seal - Green Seal develops life cycle-based sustainability standards for products, services and companies and offer third-party certification for those that meet the criteria in the standard. Green Seal has been actively identifying and promoting sustainability in the marketplace, and helping organizations be greener in a real and effective way since 1989. www.greenseal.org

See the back cover for a complete list of formulas designated as Green Seal Certified and USDA Biobased Certified.

Facility Friendly

- High-capacity refills last longer and require fewer changes.
- Fully ADA compliant, Affinity dispensers measure less than 4" deep and operate with less than 5 pounds of force.
- The large sight window makes it easy for staff to monitor refills.
- Sealed, hygienic refills reduce the risk of contamination associated with bulk soap dispensers.
- The Affinity manual dispenser can be set up as either push button access or key access for additional security.
- A thoughtful backplate design covers most dispenser footprints eliminating extra wall plates or time-consuming wall repairs.

Foam output per 1,250mL refill*



Affinity

Others




affinity™
by HILLYARD



Scan the QR Code to view more information,
videos and downloads for Affinity!

*Based on Affinity Manual System.
**Based on 0.4 mL per press.

A Cost Effective Combination Designed for Financially Savvy Managers

It's a pretty simple concept. Design a high-quality system that performs well under the pressure of facility budgets. Take the view that building long-term relationships with customers outweighs the quick sale. And, the result is Affinity by Hillyard.

- Thick, rich formulas enriched with moisturizers and natural conditioners.
- Efficient pump system delivers the right amount of product minimizing waste. Foam output is 0.6 mL. Manual dispensers can restrict foam output to 0.4 mL. Gel and liquid output is 1.0 mL.
- One dispensing system with your choice of refills simplifies purchasing and makes it easy to train staff.



Helping Build Hygiene Awareness

Go to hillyard.com to download professionally designed posters to build hygiene awareness!

Posters are available for schools, offices, health care facilities, fitness centers, food service establishments and more!



Go Manual or Touchless

It's Your Choice!



Includes 4-C Batteries

Modular Design

Designed for trouble-free performance. In the unlikely event the drive mechanism stops working, it can easily be replaced without taking the dispenser off the wall.

Easily replace existing dispensers. The backplate has been designed to match many mounting configurations.



Our Pledge

With over 100 years of experience, we stand behind our products. If you are not completely satisfied with Affinity, return the dispenser and unused refills for a full refund.



Custom Dispenser Plates



BUILDING YOUR BRAND IT'S AS EASY AS 1-2-3

- Full color printing, low minimums - 18 plates.
- Branding plates are adhesive-backed and can easily be installed on wall-mounted dispensers.
- Choice of solid or window-cut plates, black or white
- Designs only limited by your creativity.
- Self-service design and ordering portal, just upload and order.



Go to
artwork.hillyard.com
to order branding plates.

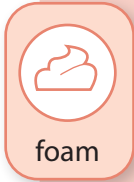


HILLYARD

The Cleaning Resource®

Touch-Free System

Manual System



Description	Color			Item No.	Case Pack	Item No.	Case Pack
Mandarin-Cranberry Premium Foam Soap	Sunset Orange	✓	83%	HIL0039402	3-1,000mL	HIL0039403	4-1,250mL
Cucumber-Melon Premium Foam Soap	Melon Green	✓	81%	HIL0039802	3-1,000mL	HIL0039803	4-1,250mL
Green Select® Foaming Hand Soap	Crystal Clear	✓	86%	HIL0039002	3-1,000mL	HIL0039003	4-1,250mL
Green Premium Foaming Hand Soap	Crystal Clear	✓	85%	HIL0041102	3-1,000mL	HIL0041103	4-1,250mL
Citrus Fresh Antimicrobial Foaming Hand Soap (Active: PCMX)	Sienna Orange	x	-	HIL0040802	3-1,000mL	HIL0040803	4-1,250mL
E2 Food Industry Foam Soap (Active: Benzalkonium Chloride)*	Crystal Clear	x	-	HIL0041902	3-1,000mL	HIL0041903	4-1,250mL
Foaming Hair and Body Wash	Emerald Green	x	71%	-	-	HIL0039103	4-1,250mL
Foaming Instant Hand Sanitizer	Crystal Clear	x	98%	HIL0041003	4-1,000mL	HIL0041003	4-1,000mL
Alcohol Free Foaming Instant Hand Sanitizer	Crystal Clear	x	-	HIL0040302	3-1,000mL	HIL0040303	4-1,250mL



Description	Color			Item No.	Case Pack	Item No.	Case Pack
Pink Lotion Hand Soap	Pink	x	-	-	-	HIL0040403	4-1,250mL



Description	Color			Item No.	Case Pack	Item No.	Case Pack
Instant Hand Sanitizer Gel	Crystal Clear	x	98%	-	-	HIL0040203	4-1,000mL
Hair & Body Wash Gel	Emerald Green	x	84%	-	-	HIL0036403	4-1,250mL



Description	Color			Item No.	Case Pack
Alcohol-based Instant Hand Sanitizer Spray - 62% Alcohol	Crystal Clear	-	98%	HIL0042203	4-1,000mL

NSF Certified E2 for use as a hand washing and sanitizing compound for use in and around food processing areas.

Certified by Green Seal® as safer for people and the planet.

Touch-free Dispensers



White Dispenser
HIL22410



Black Dispenser
HIL22411

Dimensions	10.5" T x 6.5" W x 3.75" D
Foam Output	0.6 mL per press
Liquid Output	1.0 mL per press
Gel Output	1.0 mL per press
Case Pack	1
Refill Size / Pack	3 - 1,000 mL cartridges

Manual Dispensers



White Dispenser
HIL22303



Black Dispenser
HIL22304

Dimensions	11.0" T x 6.25" W x 3.75" D
Foam Output	0.4/0.6 mL per press
Liquid Output	1.0 mL per press
Gel Output	1.0 mL per press
Case Pack	6
Refill Size / Pack	4 - 1,250 mL cartridges*

Accessories



Clean Tray
HIL22075
Color: Graphite
Case Pack: 12



Floor Stand
HIL22278
Color: Gray

Subject to change without notice.

* Instant Hand Sanitizer case pack is 4 - 1,000 mL cartridges.