

FLEXSTEEL®

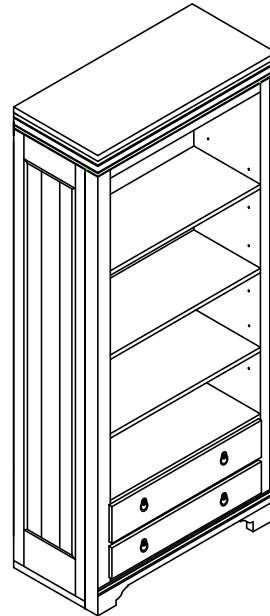
W1347-701

Bookcase

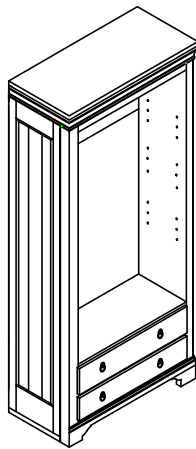
IMPORTANT NOTE

Carefully remove all the parts from the carton and put them individually on a soft cloth to prevent damage to the parts.

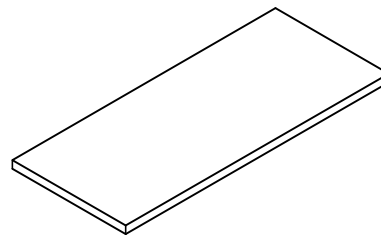
We have taken great care in the design of this product and request that you carefully and strictly follow our assembly instructions to ensure a completed product as it was designed.



Part List

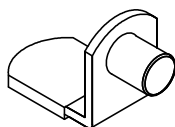


A. Bookcase
1 piece

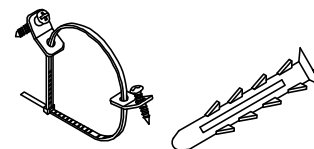


B. Adjustable Shelf
3 pieces

Hardware List

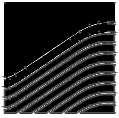


Shelf Support
12 pieces



Anti-Tipping Device
1 set

Tool(s) recommended for assembly: Level



IMPORTANT

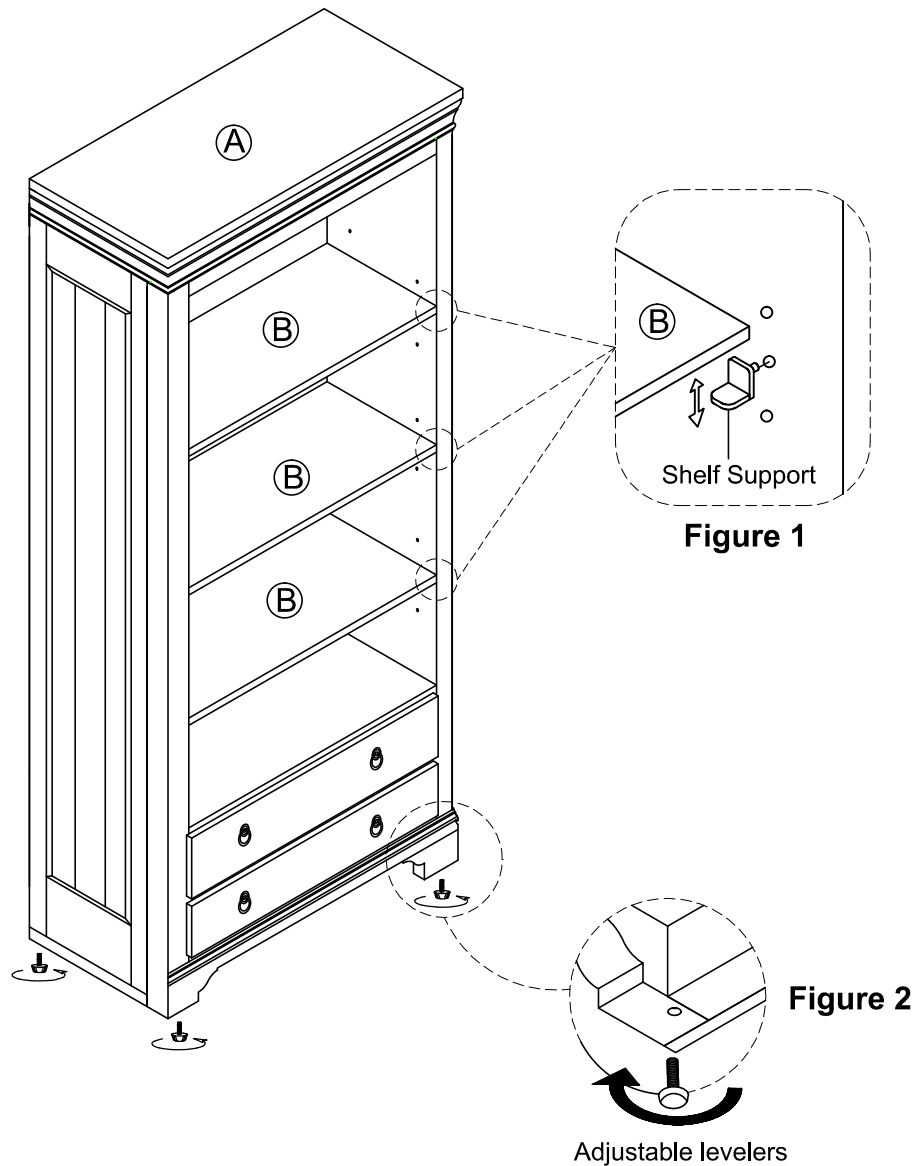
- Use a soft cloth between these parts and the floor.

STEP 1

To add a Shelf (B), place the Shelf Supports in the desired position, and insert the Shelf (B). (See Figure 1.)

To reposition a Shelf (B), remove it from the furniture, move the Shelf Supports to the desired position, and reinsert the Shelf (B).

To remove a Shelf (B), remove it from the furniture, and remove the Shelf Supports.



STEP 2

Adjust the levelers on the base until the furniture is level. (See Figure 2.)