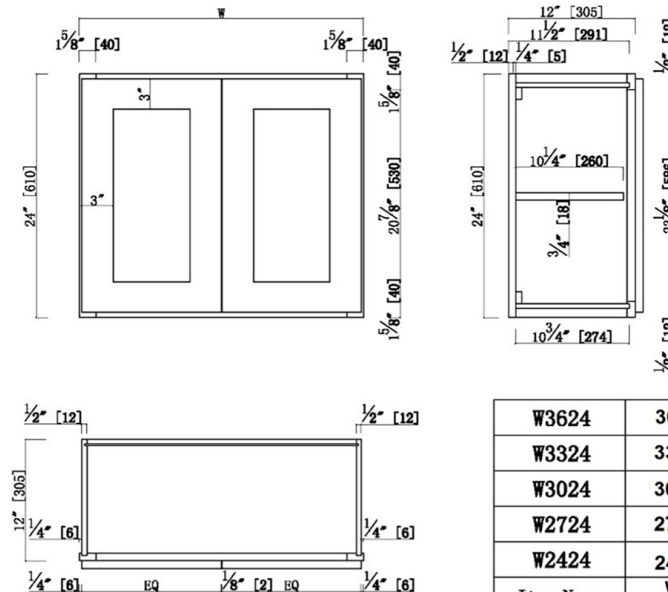


Brookings Fully Assembled Shaker Tall Wall Kitchen Cabinet 33x24x12

Espresso



| | |
|-----------|-----|
| W3624 | 36" |
| W3324 | 33" |
| W3024 | 30" |
| W2724 | 27" |
| W2424 | 24" |
| Item Name | W |

SPECIFICATIONS

| | |
|------------------------|-----------------------|
| MATERIAL CONSTRUCTION: | Wood |
| WOOD SPECIES: | Maple |
| ASSEMBLED DIMENSIONS: | 24" H x 33" L x 12" D |
| ASSEMBLED WEIGHT: | 62 lbs. |
| KITCHEN CABINET TYPE: | Wall |
| MOUNTING TYPE: | Wall Mount |
| CONSTRUCTION TYPE: | Face Frame |
| HINGE STYLE: | Soft Close |
| DOOR STYLE: | 2 Wood shaker doors |
| NUMBER OF DRAWERS: | 0 |
| DRAWER DIMENSIONS 1: | N/A |
| DRAWER DIMENSIONS 2: | N/A |
| DRAWER DIMENSIONS 3: | N/A |
| DWR BOX MATERIAL: | N/A |
| DWR CONSTRUCTION: | N/A |
| DWR GLIDE: | |
| FAKE DWR QTY: | 0 |
| FAKE DWR LOCATION: | N/A |

| | |
|---------------------------------|--------------------|
| NUMBER OF SHELVES: | 1 |
| SHELF STYLE: | Flat |
| ADJUSTIBLE SHELVES: | Yes |
| SHELF ADJUSTIBILITY INCREMENTS: | 2.5" |
| SHELF DIMENSIONS: | 31.5" W x 10.25" D |
| SHELF THICKNESS: | 0.75" |
| SHELF MATERIAL: | Plywood |
| FACE FRAME MATERIAL: | Solid Maple |
| SIDES MATERIAL: | Plywood |
| BOTTOM MATERIAL: | Plywood |
| BACK PANEL MATERIAL: | Plywood |
| BACK BRACE MATERIAL: | Wood |
| TOE KICK INSET WIDTH: | N/A |

| | |
|-------------------------------|-------------------------|
| WARRANTY: | 1-Year limited warranty |
| LEGAL FOR SALE IN CALIFORNIA: | Yes |
| CARB COMPLIANT: | CARB Phase 2 |
| TSCA TITLE VI COMPLIANT: | Yes |



TYPE:
JOB:
ORDER CODE:
APPROVALS: