

FLEXSTEEL®

OUTDOOR LIVING

G6000-826 Bar Cart

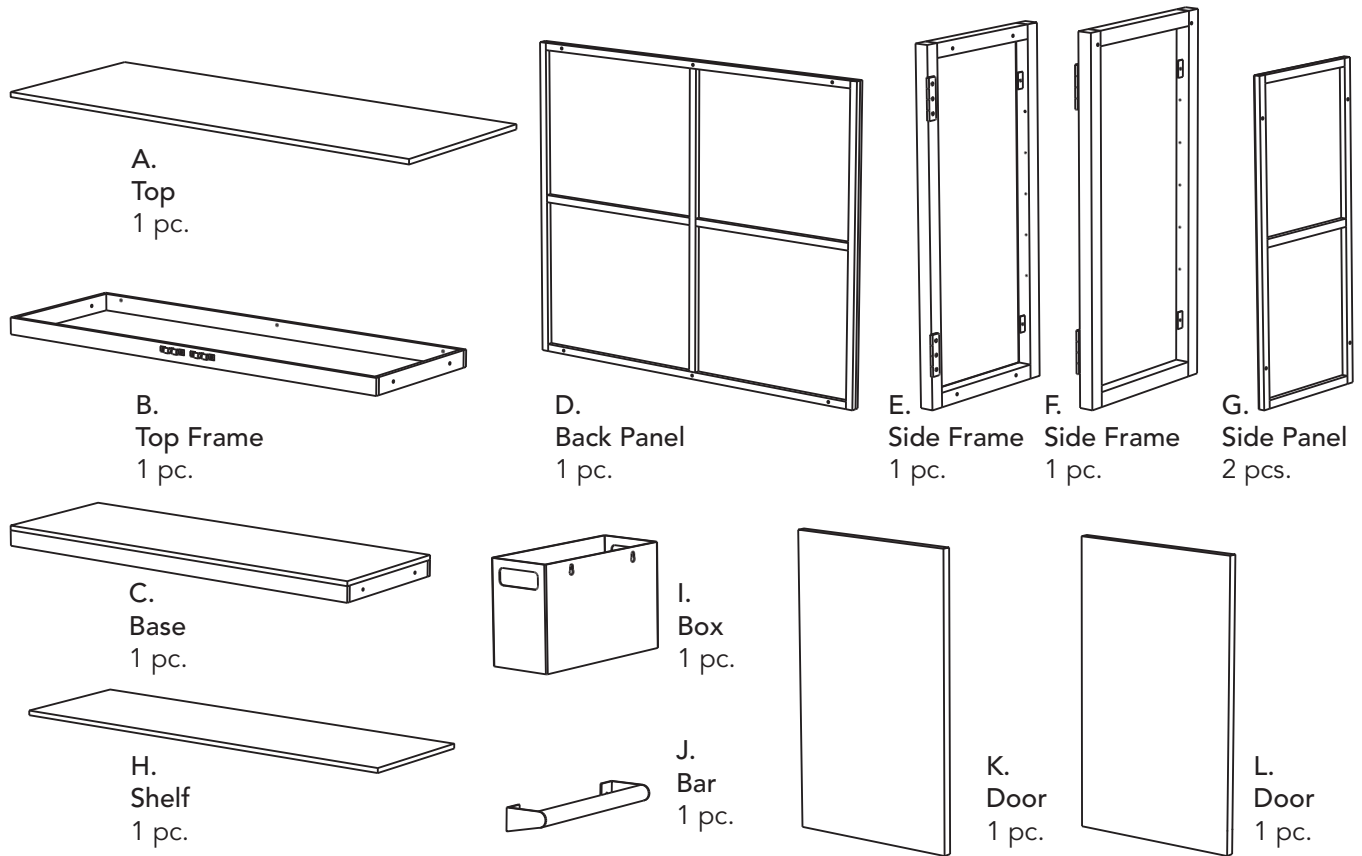
IMPORTANT NOTE

Carefully remove all the parts from the carton and put them individually on a soft cloth to prevent damage to the parts.

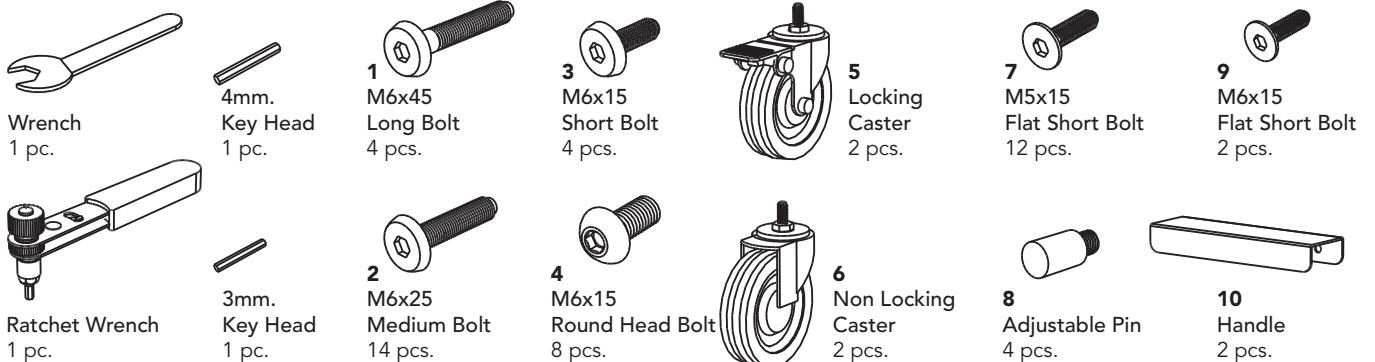
We have taken great care in the design of this product and request that you carefully and accurately follow our assembly instructions to ensure proper set-up.



Part List



Hardware List



IMPORTANT

- Use a soft cloth between these parts and the floor.
- Do not use power tools above 8 volts to assemble.
- Do not tighten all the bolts until each part is properly assembled.
- Keep Ratchet Wrench as the bolts may need to be tightened in the future.

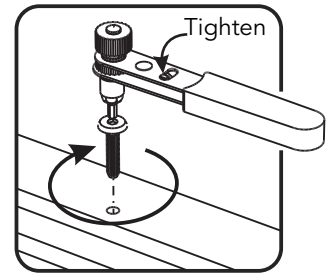
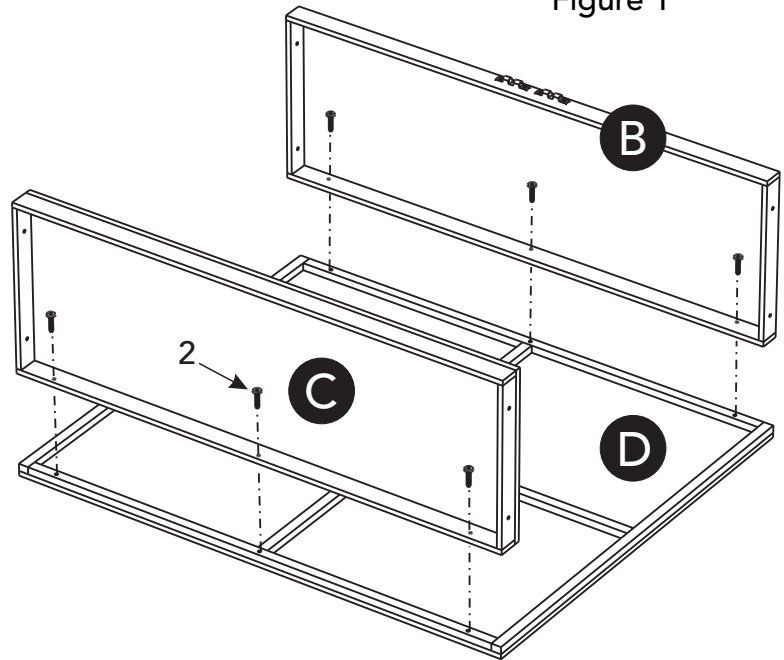


Figure 1

STEP 1

Attach Top Frame (B) and Base (C) to Back Panel (D) with Medium Bolts (2), tightening Bolts by using Ratchet Wrench only half way.

Note: Please use 4mm. Key Head and Ratchet Wrench button is in tighten position.
(See Figure 1)

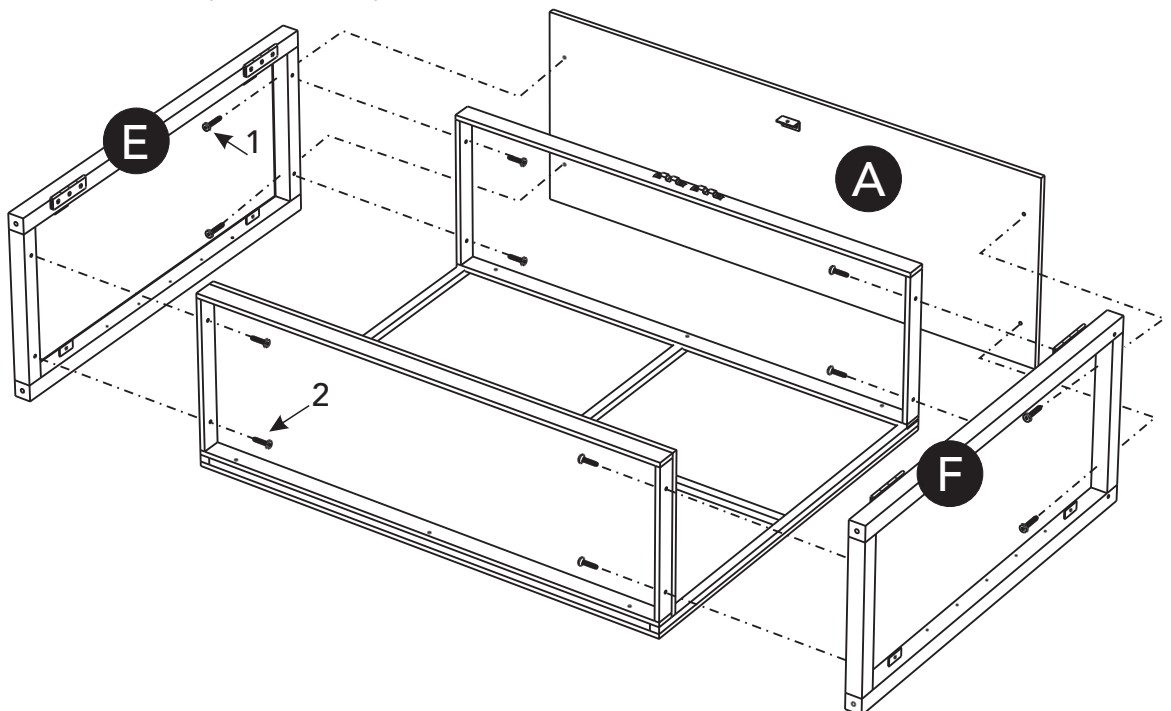


STEP 2

Attach Side Frames (E) and (F) to unit with Medium Bolts (2), tighten Bolts only half way.

Attach Top (A) to unit with Long Bolts (1), tighten Bolts only half way.

Tighten all Bolts used in Step 1 and Step 2.



STEP 3

Attach Side Panels (G) to unit with Round Head Bolts (4).

Attach Locking Casters (5) and Non Locking Casters (6) to unit by using Wrench. (See Figure 2)

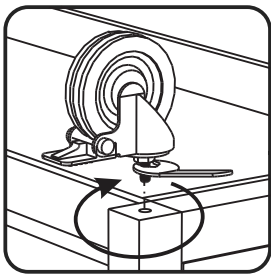
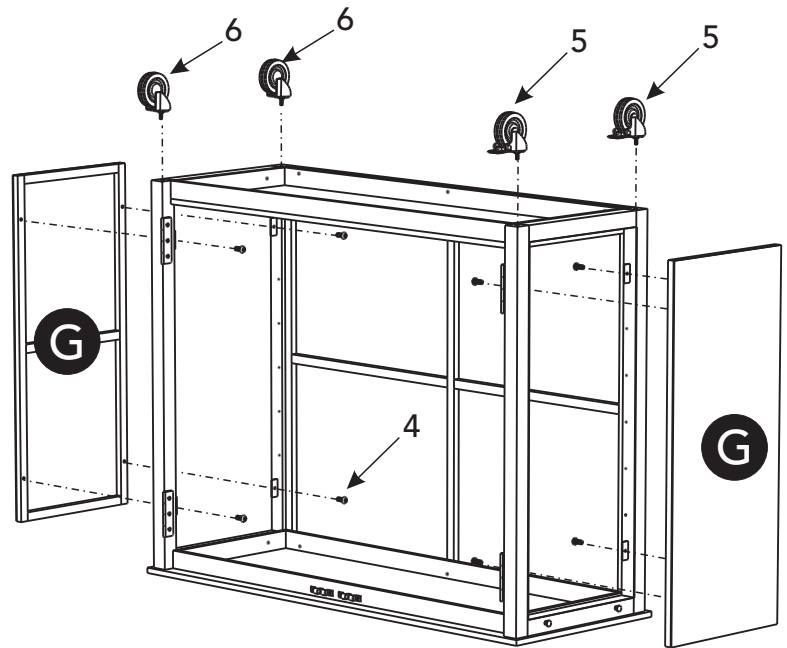


Figure 2

STEP 4

Turn over unit to its upright position.

Attach Box (I) to unit by inserting hook in side panel into hole in Box (I). (See Figure 3)

Attach Bar (J) to unit with Flat Short Bolts (9). (See Figure 4)

Insert Adjustable Pin (8) into side frames at desired level. (See Figure 5)

Place Shelf (H) into position.

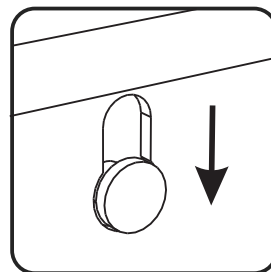


Figure 3

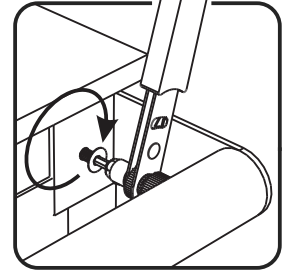


Figure 4

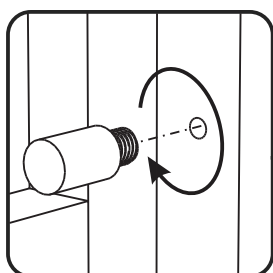
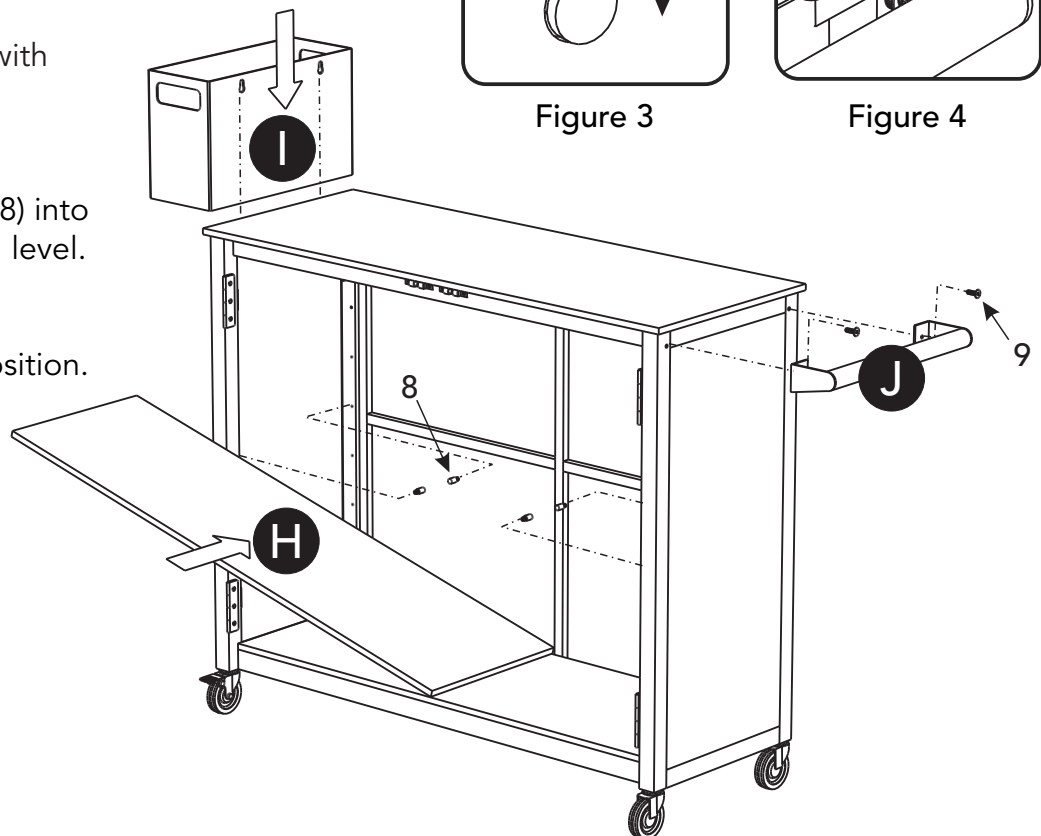


Figure 5

STEP 5

Attach Handles (10) to Doors (K) and (L) with Short Bolts (3). (See Figure 6)

Attach Doors (K) and (L) to unit with Flat Short Bolts (7) by using 3mm. Key Head. (See Figure 7)

Note: Maximum load capacity for Top Panel, Shelf and Bottom Panel: 30LBS.

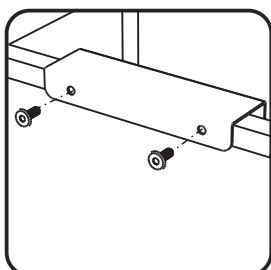
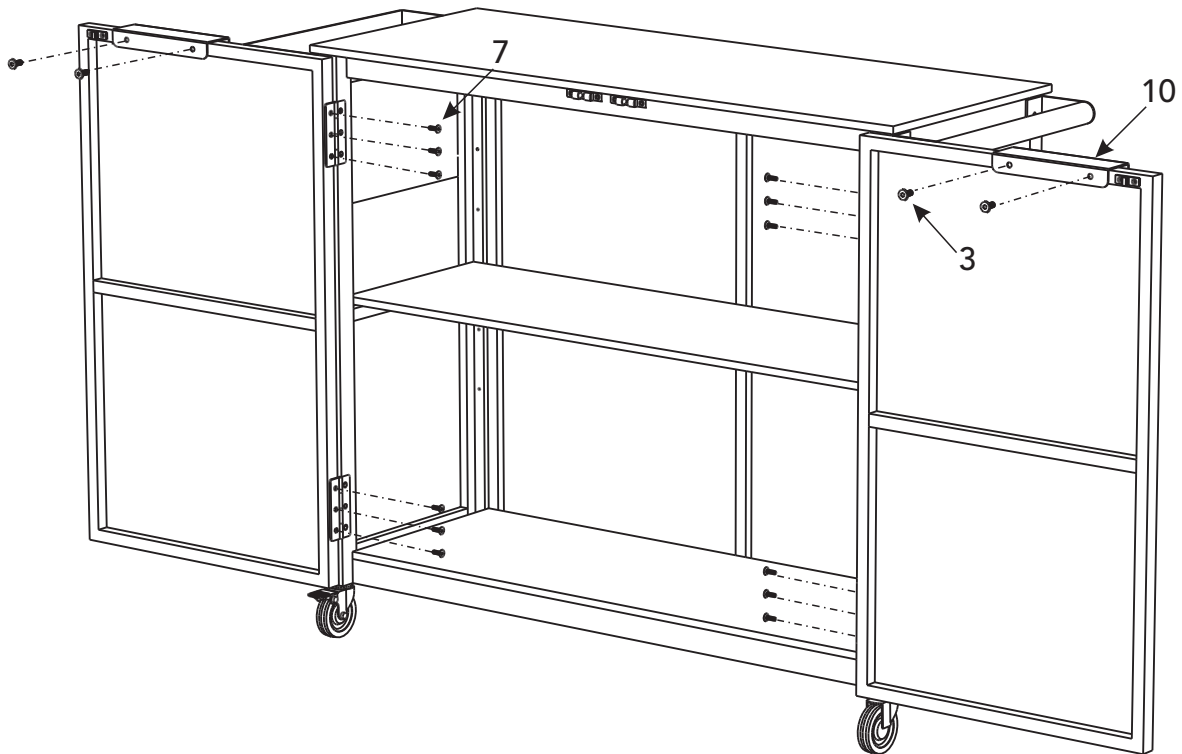


Figure 6

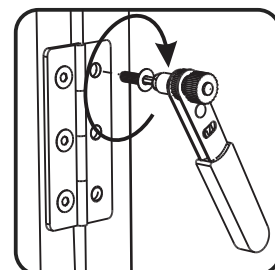


Figure 7

CARE INSTRUCTIONS

Cleaning and maintenance:

- Regular cleaning: clean the furniture regularly with a damp cloth or sponge to remove dirt, dust and other deposits.
- Deeper cleaning: use mild soapy water. Avoid harsh chemicals that might harm the metal or synthetic wicker.
- Wipe dry if exposed to chlorine.
- Spot test to ensure the cleaning agents do not cause any damage to the product.
- Avoid sharp tools. Do not use hard brushes or sharp tools in order to prevent scratches.

Storage:

- To prolong the life of your outdoor furniture, we recommend using furniture covers when not in use.

Usage:

- Use furniture on a solid and level surface to minimize prolonged exposure to uneven or damp ground.
- Periodically check for any loose bolts and tighten as needed.
- To avoid scratches, do not place sharp or jagged objects directly on the table top.
- Do not place hot items directly on the table. Use placemats or trivets under hot items and coasters under beverages to prevent marks and stains.

Flexsteel Industries, Inc.

For Parts or Customer Service, call toll-free: 1-888-415-3979

Monday-Friday 8:00-5:00pm Central Time

Email: customersolutions@flexsteel.com

www.flexsteel.com