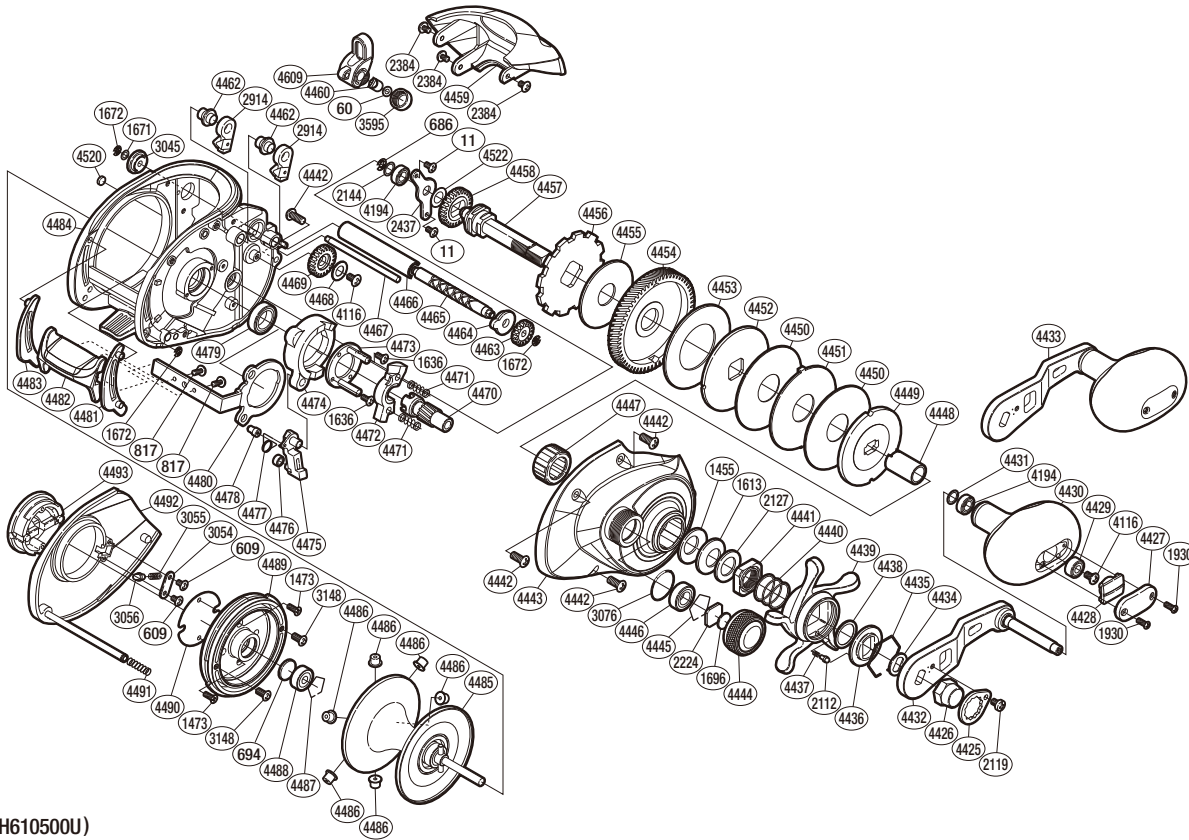


SHIMANO

TRAX

TRX-500HG



(51RH610500U)

#	Part No.	Description	#	Part No.	Description	#	Part No.	Description
11	10MT0	Screw	4428	10B97	Handle Knob Seal	4463	10FNY	Idle Gear
60	10CFW	Spacer	4429	10KX2	Ball Bearing	4464	10NCY	Worm Bushing A
609	10MT3	Screw	4430	105ZC	Handle Knob	4465	104ZL	Worm Shaft
686	105NK	E Lock	4431	10G8G	Washer	4466	10NG0	Level Wind Guard
694	10GEU	Spacer B	4432	10A6E	Handle Shank Assembly	4467	10GUK	Level Wind Guide
817	10MPW	Screw	4433	10CFF	Handle Assembly	4468	10GA2	Washer
1455	1052E	Coned Disc Spring (8H)	4434	107QM	Drive Shaft Shield	4469	10FNT	Idle Gear
1473	10MGK	Screw	4435	10KXX	Click Plate Retainer	4470	10CTU	Pinion Gear
1613	10EW3	Coned Disc Spring (8L)	4436	10J27	Star Drag Click Plate	4471	104BD	Yoke Spring
1636	10LVG	Screw	4437	10HZ6	Click Spring	4472	10472	Yoke
1671	10BHX	Washer	4438	10G6M	Washer	4473	10F41	Clutch Cam Retainer
1672	105NC	E Lock	4439	10B81	Star Drag	4474	10K0Z	Clutch Cam
1696	10896	Cast Control Spacer	4440	10HZ2	Star Drag Spring	4475	105ZR	Clutch Pawl
1930	103NH	Screw	4441	10A3M	Star Drag Nut	4476	1048B	Clutch Pawl Bushing
2119	103GX	Screw	4442	10M6N	Screw	4477	104CR	Clutch Pawl Spring
2122	10BT0	Click Pin	4443	10PX3	Right Side Plate	4478	108S6	Clutch Pawl Spring Collar
2127	10J1N	Star Drag Spacer	4444	10KDU	Cast Control Cap	4479	10KX7	Ball Bearing
2144	10C47	Washer	4445	10GGN	Bearing Retainer	4480	10QLK	Clutch Plate
2224	1085F	Spool Tension Spacer	4446	104JD	Ball Bearing	4481	10979	Clutch Bar Guide B
2384	103L2	Screw	4447	10F37	Roller Clutch Bearing	4482	10CGD	Quick-Fire II Clutch Bar
2437	109T3	Drive Shaft Retainer	4448	10BMY	Roller Clutch Inner Tube	4483	10ASP	Clutch Bar Guide A
2914	10MWB	Anti-Reverse Pawl	4449	10D52	Pressure Plate	4484	10F13	One-Piece Frame
3045	104SZ	Worm Bushing B	4450	10L8J	Drag Washer	4485	10L3X	Spool Assembly
3054	10KVM	Click Pin Retainer	4451	10KQK	Eared Washer	4486	10CMM	Brake Collar
3055	10B52	Click Spring	4452	10L56	Drag Washer	4487	10GGM	Bearing Retainer
3056	10B50	Click Pin	4453	10D3E	Drag Washer	4488	10KAE	Ball Bearing
3076	108W8	O Ring	4454	10CP3	Drive Gear	4489	10FXU	Brake Case
3148	103H1	Screw	4455	10CLZ	Drag Washer	4490	10TUF	Brake Case Spacer
3595	10FJV	Pawl Cap	4456	10D75	Anti-Reverse Ratchet	4491	10KND	Damper Spring
4116	103E9	Screw	4457	105CP	Drive Shaft	4492	10D27	Left Side Plate
4194	105BP	Ball Bearing	4458	10J6Z	Idle Gear	4493	10FX5	Turnkey Dial
4425	10QUA	Handle Nut Plate	4459	10NY9	Thumb Rest	4520	108PZ	Anti-Thrust Washer
4426	10FNF	Handle Nut	4460	10FFV	Line Guide Pawl	4522	10HWW	Washer
4427	108SQ	Handle Knob I.D. Plate	4462	10PE1	Anti-Reverse Pawl Shaft	4609	10NYY	Line Guide

Please note that the number of adjusting washers may not be the same as shown in the exploded views.
(Adjustment will vary with each individual product.)

(241120)_002