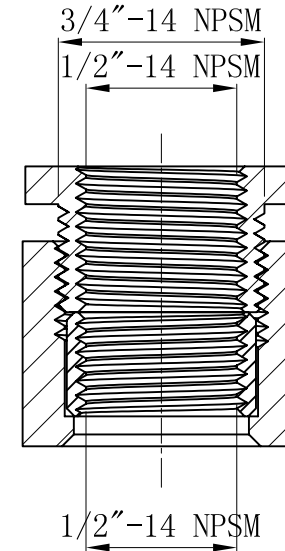
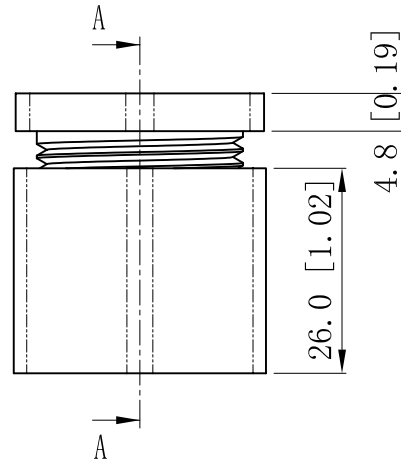
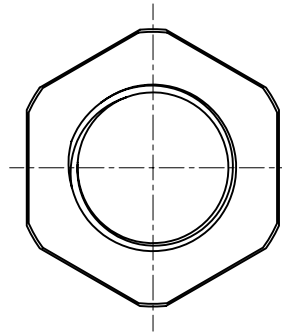
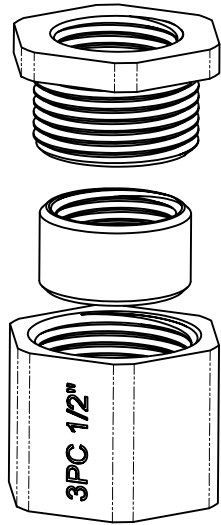


SIDES

BOTTOM

Material:malleable casting,Finish:Zinc plated



CUTAWAY VIEW A-A

This data sheet is for reference only .GARVIN INDUSTRIES reserves the right to make changes to the design without prior notice.

DESCRIPTION

TRADE REFERENCE TERMS

STANDARD PACKING

25 PCS

GARVIN INDUSTRIES

THREE-PIECE COUPLING

TITLE

SIZE
A4

DWG NO.

3PC50

REV

DATA SHEET