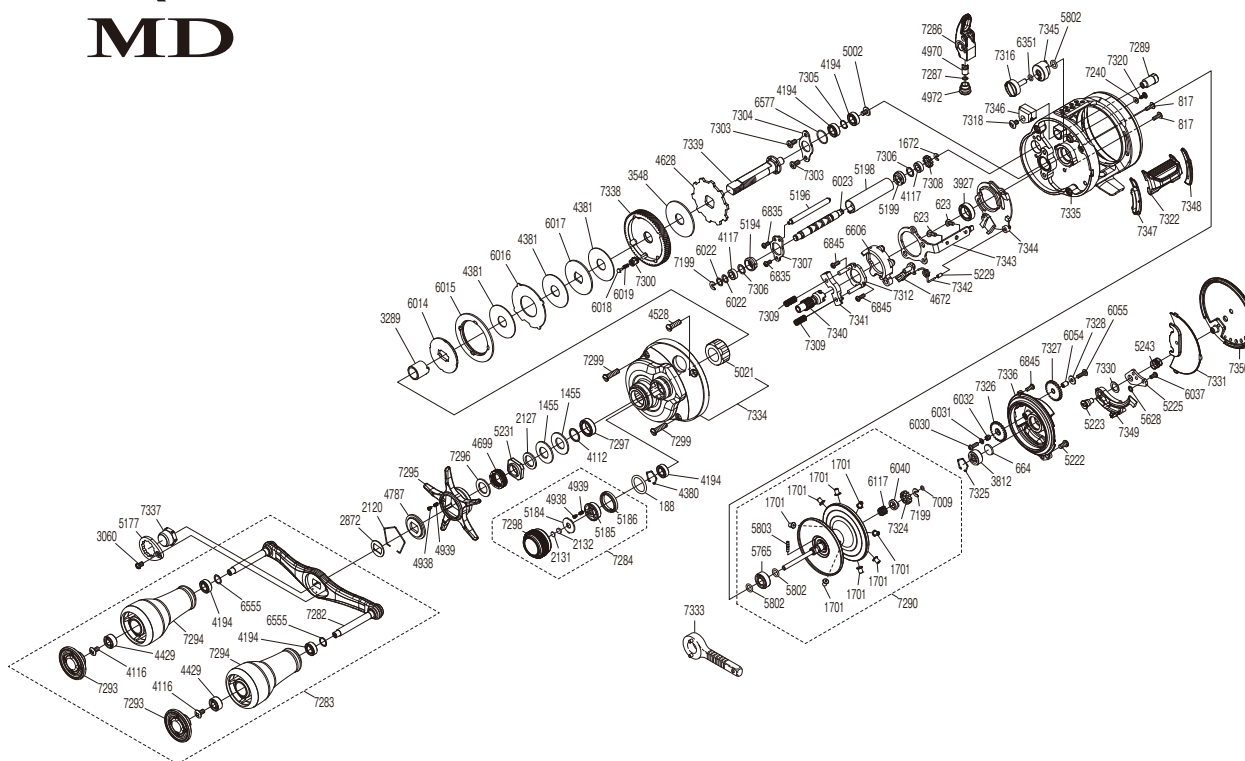


# SHIMANO

## CALCUTTA CONQUEST MD

### 23CQMD301XLH



(51RL643B41X)

#	Part No.	Description	#	Part No.	Description	#	Part No.	Description
188	109EB	O Ring	5223	10GM6	B Side Plate Insert	7296	10QXM	Washer
623	103C0	Screw	5225	10AYX	Damper Bush	7297	105BS	Ball Bearing
664	1057S	Spacer B	5229	108S5	Clutch Pawl Spring Collar	7298	13YKC	Cast Control Cap
817	10MPW	Screw	5231	10A3W	Star Drag Nut	7299	13MBW	Screw
1455	1052E	Drag Spring Washer (H)	5243	10KNB	Damper Spring	7300	13VG9	Drag Click Pin Holder
1672	105NC	E Lock	5628	10280	Washer	7303	1055F	Screw
1701	10CPE	Brake Collar (Gray)	5765	105CA	Ball Bearing	7304	13VAE	Drive Shaft Retainer
2120	10KXV	Click Plate Retainer	5802	10TNF	O Ring	7305	13Y0Z	Washer
2127	10J1N	Star Drag Spacer	5803	10MD0	Spool Clutch Pin	7306	10G8F	Washer
2131	10897	Cast Control Spacer	6014	10D54	Pressure Plate	7307	13SCJ	Worm Bushing Retainer
2132	1085G	Cast Control Spacer	6015	10JAZ	Drag Click Ratchet	7308	13S6P	Idle Gear C
2872	107QQ	Drive Shaft Shield	6016	10KQL	Eared Washer	7309	13T1T	Yoke Spring
3060	10CZ5	Screw	6017	10LB6	Drag Washer	7312	13UEP	Clutch Cam Retainer
3289	10BN7	Roller Clutch Inner Tube	6018	10C0S	Drag Click	7316	13YKF	Br Dial
3548	10CHZ	Drag Washer	6019	10J89	Click Spring	7318	103L4	Screw
3812	105C1	Ball Bearing	6022	10J16	Washer	7320	13JWQ	Screw
3927	10EX8	Ball Bearing	6023	10T05	Worm Shaft	7322	13H6M	Clutch Button Assembly
4112	10J4J	Washer	6030	10LVM	Screw	7324	13SW5	Idle Gear A
4116	103E9	Screw	6031	10HVD	Washer	7325	10GEW	Bearing Retainer
4117	10PXY	Bushing	6032	10ECQ	Idle Gear B Support	7326	13RUX	Idle Gear B
4194	105BP	Ball Bearing	6037	10U0S	Screw	7327	13S6N	Idle Gear D
4380	1057X	Retainer	6040	10MCY	Spool Shaft Cam	7328	13PKE	Washer
4381	10CHW	Drag Washer	6054	10TUH	Idle Gear D Support	7330	13YKJ	Washer
4429	10KX2	Ball Bearing	6055	10TTU	Screw	7331	13YKM	B Side Plate Seal
4528	10A6X	Screw	6117	10E20	Spool Shaft Spring	7334	13YKM	A Side Plate Assembly
4628	10D6Y	Anti-Reverse Ratchet	6351	10CFZ	O Ring	7335	13YKN	Frame Assembly
4672	105ZV	Clutch Pawl	6555	104FH	Washer	7336	13YKP	Dial Case Assembly
4699	10A71	Star Drag Spring	6577	10S24	O Ring	7337	13V1Q	Handle Nut
4787	10J1Y	Star Drag Click Plate	6606	10SKS	Clutch Cam	7338	13UYC	Drive Gear
4938	10B27	Click Pin	6835	10LVF	Screw	7339	13YQK	Drive Shaft
4939	10988	Click Spring	6845	101CN	Screw	7340	13SQ8	Pinion Gear
4970	10FFT	Line Guide Pawl	7009	10E7H	O Ring	7341	13T1U	Yoke
4972	10FJC	Pawl Cap	7199	105NK	E Lock	7342	13YKR	Clutch Pawl Spring
5002	10PVU	Screw	7240	13Y8G	Washer	7343	13TDR	Clutch Plate
5021	10F33	Roller Clutch Bearing	7282	13YK2	Handle Shank Assembly	7344	13UER	Clutch Guard
5177	10Q66	Handle Nut Plate	7283	13YK3	Handle Assembly	7345	13YKS	Brake Cam
5184	10L2E	Cast Control Click Plate	7284	13YK4	Cast Control Cap Assembly	7346	13YKT	Brake Holder
5185	10BSX	Click Pin Holder	7286	13GH8	Line Guide Pawl Holder Assembly	7347	13TDS	Clutch Bar Guide B
5186	10L70	Cast Control Click Holder	7287	13GJU	Washer	7348	13TDR	Clutch Bar Guide A
5194	10N9Q	Worm Bushing A	7289	13YK7	Magnet Holder Assembly	7349	13RNT	B Side Plate Cam Lever
5196	10GUG	Level Wind Guide	7290	13YK8	Spool Assembly	7350	13YKU	B Side Plate
5198	10NFU	Level Wind Guard	7293	13YKA	Handle Knob Seal			
5199	104SP	Worm Bushing B	7294	13YKB	Handle Knob			
5222	10LSL	Screw	7295	13V35	Star Drag	7333	10NC0	Wrench (Accessory)

Please note that the number of adjusting washers may not be the same as shown in the exploded views.  
(Adjustment will vary with each individual product.)

(240620)\_004