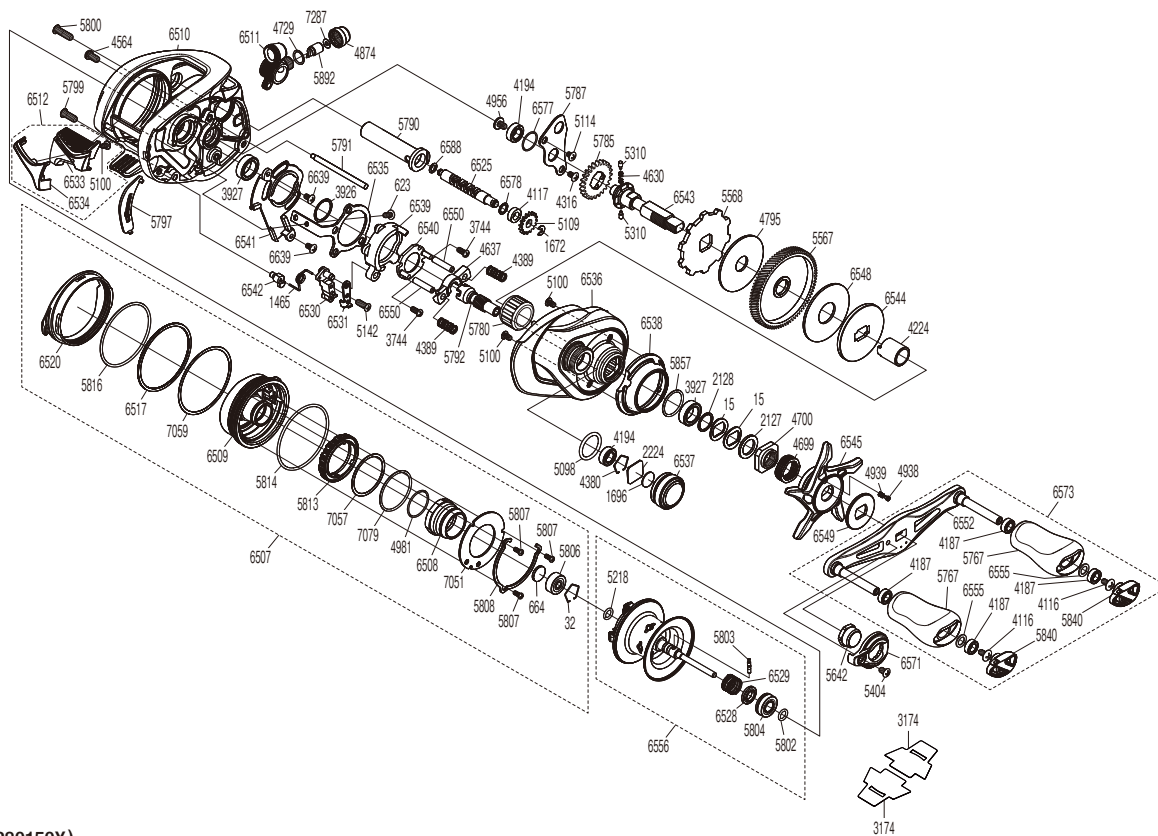


SHIMANO

Metanium

ME-150



(51RL280150X)

#	Part No.	Description	#	Part No.	Description	#	Part No.	Description
0015	10D60	Drag Spring Washer	5218	10EZ7	O Ring	6529	10SJF	Bearing Pressure Spring
0032	10GEW	Bearing Retainer	5310	10HJG	Idle Gear Pin	6530	10RVS	Clutch Pawl A
0623	103C0	Screw	5404	10DN7	Screw	6531	10RWM	Clutch Pawl B
0664	1057S	Spacer B	5567	1021F	Drive Gear	6533	10RLD	Clutch Button
1465	10N1Z	Clutch Pawl Spring	5568	1021K	Anti-Reverse Ratchet	6534	10RNZ	Clutch Button Cover
1672	105NC	E Lock	5642	10SSU	Handle Nut	6535	10RW8	Clutch Plate
1696	10896	Cast Control Spacer	5767	10SSM	Handle Knob	6536	10RN7	Right Side Plate
2127	10J1N	Star Drag Spacer	5780	1005E	Roller Clutch Bearing	6537	10RVW	Cast Control Cap
2128	105PW	Bearing Washer	5785	10057	Idle Gear	6538	10RN8	Clutch Button Attachment
2224	1085F	Spool Tension Spacer	5787	1005S	Drive Shaft Retainer	6539	10SX6	Clutch Cam
3744	10LVH	Screw	5790	1005Z	Level Wind Guard	6540	10RWA	Clutch Cam Retainer
3926	10G8C	Washer	5791	1006J	Level Wind Guide	6541	10RW7	Clutch Guard
3927	10EX8	Ball Bearing	5792	10068	Pinion Gear	6542	10RWD	Clutch Spring Holder
4116	103E9	Screw	5797	1000Z	Clutch Bar Guide B	6543	10RW0	Drive Shaft
4117	10PXY	Bushing	5799	101GQ	Screw	6544	10RW3	Pressure Plate
4187	104VX	Ball Bearing	5800	103LN	Screw	6545	10RP1	Star Drag
4194	105BP	Ball Bearing	5802	10TNF	O Ring	6548	10RWJ	Drag Washer
4224	10BN3	Roller Clutch Inner Tube	5803	10MD0	Spool Clutch Pin	6549	101JC	Star Drag Click Plate
4316	10MT2	Screw	5804	1005D	Ball Bearing	6550	10RVR	Clutch Cam Retainer Cover
4380	1057X	Retainer	5806	10S37	Ball Bearing	6552	100J2	Handle Shank Assembly
4389	104BU	Yoke Spring	5807	1026U	Screw	6555	104FH	Washer
4564	10LZD	Screw	5808	10TUC	Cam Lever Retainer	6556	100BS	Spool Assembly(With Bearing)
4630	10JDX	Idle Gear Spring	5813	1000Y	Br Dial	6571	1017T	Handle Nut Plate
4637	1046T	Yoke	5814	108WZ	O Ring	6573	10T8X	Handle Assembly
4699	10A71	Star Drag Spring	5816	1006P	O Ring	6577	10SZ4	O Ring
4700	10A0B	Star Drag Nut	5840	1005A	Handle Knob Seal	6578	10GFG	Washer
4729	108WQ	O Ring	5857	1027V	O Ring	6588	100TB	Washer
4795	10CJ1	Drag Washer	5892	10211	Line Guide Pawl	6639	100BD	Screw
4874	10FJB	Pawl Cap	6507	100J8	Left Side Plate Assembly	7051	10E6J	Br Dial Retainer Plate
4938	10B27	Click Pin	6508	10T8Z	Brake Pipe Gear Assembly	7057	10T9R	Washer
4939	10988	Click Spring	6509	100J5	Dial Case Assembly	7059	10E7Z	Washer
4956	10PVT	Screw	6510	100P1	Frame Assembly	7079	10CG0	O Ring
4981	10LA8	O Ring	6511	100J9	Line Guide Pawl Holder Assembly	7287	13GGU	Washer
5098	10LA9	O Ring	6512	100J3	Clutch Button Assembly			
5100	1055J	Screw	6517	10SKT	Washer			
5109	10FNX	Idle Gear	6520	10RVQ	Left Side Plate Cam Lever	3174	10PBQ	Reel Seat Spacer (Accessory)
5114	10MPF	Screw	6525	10EET	Worm Shaft			
5142	10559	Screw	6528	10SWZ	Bushing	4692	10LQ0	B-100 Oil (Accessory)

Please note that the number of adjusting washers may not be the same as shown in the exploded views.
(Adjustment will vary with each individual product.)

(230403)_008