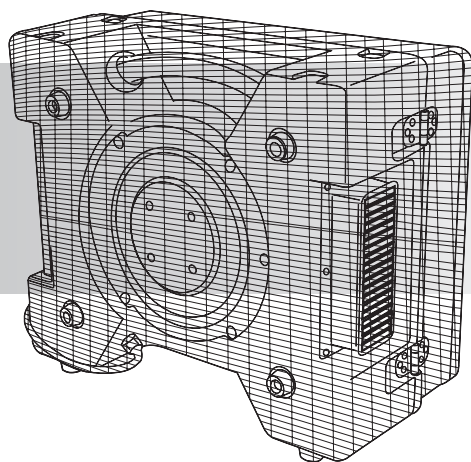


AP-450 Max

Professional Grade Air Purifier



AP-450 Max





AP-450 Max

Professional Grade Air Purifier

Read all warnings and instructions before using this unit.

The AP-450 Max Professional Grade HEPA Air Purifier is best for extra-large or small rooms and captures up to 99.97% of airborne particles as small as 0.3 microns.

With over 20 years of expertise in air purification and an unprecedented 3-stage filtration system, this powerful air purifier is the consumers' choice for elimination of harmful particles such as pet dander, pollen, dust, smoke, bacteria, mold, asbestos viruses, debris, fungal spores, odors as well as allergens.

With an unmatched CADR rating and CE-ETL-US safety certification, the AP-450 Max Air Purifier is the leading choice for people with asthma and allergies, facilitating a healthy living, improved sleep patterns, reduced coughing and sneezing as well as an overall relaxed home environment.

The AP-450 Max Air Purifier's variable speed and low amperage draw are ideal for the home environment. With its professional pedigree, the AP-450 Max Air Purifier can get the job done with a fast and effective filtration cycle. Unlike most home air purifiers, the AP-450 Max does not need to be in use for long periods of time to be effective.

Warnings!



- Do not move or carry the AP-450 Max while it is operating. When the AP-450 Max is operating, the powerful airflow can cause unpredictable movement.
- NEVER allow children to play with or around the AP-450 Max.
- Do not alter or modify your AP-450 Max in any way. Use only replacement parts authorized by B-Air®. Modifications or use of unauthorized parts could create a hazard and will void your warranty.
- Store the AP-450 Max in a clean, dry environment. Do not store outdoors or allow water inside the unit's motor. If the motor becomes wet, allow it to thoroughly dry before use.
- The AP-450 Max should never be operated near water as it will create a risk of serious injury from electrical shock. Handle unit with care to avoid causing damage or injury.
- The AP-450 Max should always be operated on a flat surface. Do not operate where unit could fall, or on slippery surfaces, as this could increase the chance of injury, fire, or electrical shock.
- Keep all liquids from being drawn into the AP-450 Max and never operate unit without factory installed safety inlet and outlet grills in place.
- Do not use the AP-450 Max near combustible gas, or hot air as unit could melt and cause a fire or electrical hazard.
- Do not take the AP-450 Max apart or repair it unless you are qualified to do so. Never repair or service unit while AP-450 Max is plugged in.
- Make sure the air intake and outlet are free from all materials and away from obstructions, as any restrictions may cause the AP-450 Max to overheat and cause a shock or fire hazard.
- Unplug the AP-450 Max before performing any service or changing filters.
- Do not stack more than 2 units high in order to avoid a tipping hazard – falling equipment can cause bodily harm.



AP-450 Max

Professional Grade Air Purifier

Operation

- 1) Place the AP-450 Max upright on a level and stable surface with the handle up.
- 2) Remove the dust cover.
- 3) Plug the AP-450 Max into a grounded 115 volt grounded outlet with the correct voltage and amperage. For maximum protection against electrical shock, ALWAYS use a circuit that is protected by a ground fault circuit interrupter. If you are unsure about the outlet, check with a qualified electrician or service person. Do not use an adapter or extension cord.
- 4) To switch the unit on, locate the control panel and turn the variable speed switch clockwise to the desired speed setting.
- 5) Operate unit until area is clear of unwanted contaminants or until filters need to be changed. The control panel has a filter change light which illuminates when the HEPA filter needs to be changed. See section on changing filters for instructions.

Auxiliary/GFCI Outlet/Daisy Chain

You can interconnect ("daisy-chain") up to three AP-450 Max's to customize your air filtration needs. The GFCI will "trip" if it detects a sudden "ground fault," or overload and interrupt the electric current. When the GFCI "trips," unplug the unit and look for potential hazards such as standing water, frayed cords, or anything that would cause a dangerous electrical problem. If such a situation exists, plug the AP-450 Max into a different outlet and then push the "reset" button which is located between the 2 outlets on the GFCI. If the unit will not operate check the circuit breaker section below.

Unit Specifications

Certifications	C-ETL-US
Package Dimensions	23 x 20 x 14 inches
Shipping Weight	40 pounds
Power	115 Volts, 60 Hz
Amps	Low 2.8A
Power Cord	25 ft
Daisy Chain Capable	Yes/ Built In GFCI Power Outlets
Filtration System	2 Stage / DOP Certified H13 HEPA and G4 Pleated Media Filter
Pre-Filter	G4P
Prime-Filter	H13 (Made in Germany)
Rubber Feet	Non Marking and Anti Skid
Housing	Extra Tough and Durable Rotomolded
Variable Speed Control Switch	yes
Hour Meter	yes
Filter Change Light Indicator	yes



AP-450 Max

Professional Grade Air Purifier

Circuit Breaker Switch

The AP-450 Max is equipped with a circuit breaker switch to protect the AP-450 Max. The switch is located directly above the GFCI outlet and cuts off power to the unit when it detects an unsafe amount of electricity passing through the unit. If the switch “trips,” unplug the unit and look for potential hazards or anything that may be creating an overload situation. “Reset” breaker by pushing button in and continue normal operation.

Changing Filters

Warning! Contaminated Hazard

Always wear NIOSH compliant protective gear when changing filters and dispose of used filters according to your local regulations.

Filters should be changed after every remediation job and whenever the filter change indicator light comes on. The unit should also be cleaned after each job to prevent cross-contamination.

Make sure the unit is dry before installing clean filters.

To change filters:

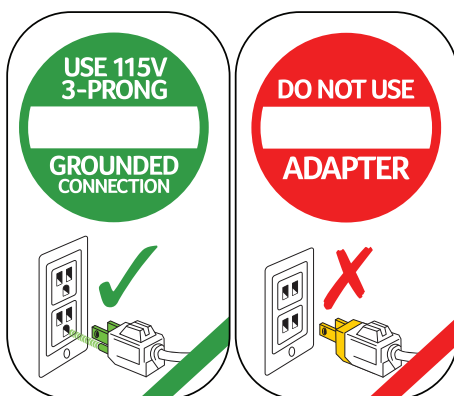
- 1) Unplug the AP-450 Max.
- 2) Open door by releasing sliding latches outward, away from the AP-450 Max body.
- 3) Remove used filters and install new filters.
- 4) Latch door closed and plug the unit in a grounded outlet before operating.

Warning!

For the safe operation of this machine follow the instructions given in this booklet and the training provided. Failure to do so can result in personal injury and/or damage to machine and property!

DO NOT OPERATE MACHINE IN AN EXPLOSIVE ENVIRONMENT!

NOTE: In Canada, the use of a temporary adapter is not permitted by the Canadian Electrical Code.





AP-450 Max

Professional Grade Air Purifier

Troubleshooting

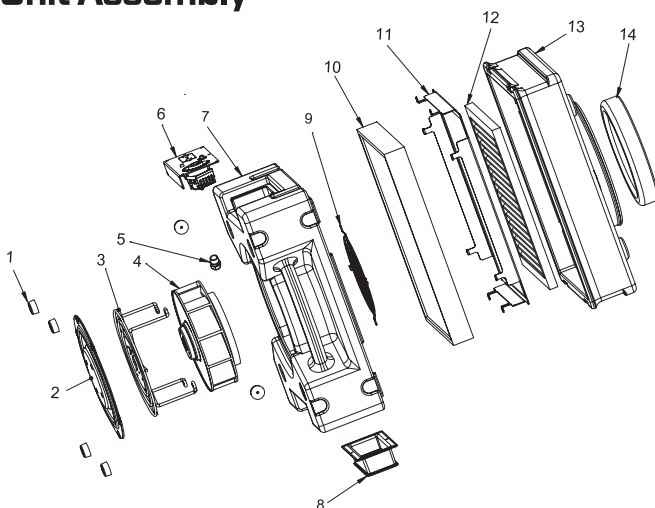
Problem	Possible Cause/Solution
AP-450 does not turn on	<ul style="list-style-type: none">• Switch not turned on-turn• Circuit breaker or GFCI has tripped-push reset button• No power to scrubber-make sure unit is plugged in; check power supply• Faulty switch-replace
AP-450 starts and then shuts off	<ul style="list-style-type: none">• Obstructed inlet/outlet - remove obstruction• Faulty motor - replace
AP-450 vibrates	<ul style="list-style-type: none">• Motor shaft is bent - replace motor• Fan blade is bent - replace• Excessive dirt built up on fan blade - clean by wiping with a slightly damp cloth
AP-450 change light illuminated	<ul style="list-style-type: none">• HEPA filter needs replacement - replace• Air intake restricted - remove restriction or bends/kinks in ducting
Motor makes noises, but AP-450 won't turn on	<ul style="list-style-type: none">• Damaged/faulty motor or motor shaft - replace• Broken/loose wire to capacitor - tighten• Damaged/faulty capacitor - replace• Damaged housing/fan; fan will not spin - replace housing or fan wheel• Motor shaft set screw holding fan wheel is loose - tighten



AP-450 Max

Professional Grade Air Purifier

Unit Assembly



Description	Part Number	Quantity
1 Rubber Feet	AP-01	10
2 Motor Cover	AP-02	1
3 Motor Mounting Bracket	AP-03	1
4 Motor 115V/60Hz	AP-04	1
4-1 Motor 220V/50Hz	AP-04-1	1
5 Cord Lock	AP-05	1
6 Switch Cover	AP-06	1
6-1 Variable Speed Switch	AP-07	1
6-2 GFCI	GFI-02	1
6-3 Circuit Breaker	AP-08	1
6-4 Timer	CM-30	1
7 Main Housing	AP-9-C	1
8 Exhaust Flange	AP-10	1
9 Intake Grill	AP-11	1
10 HEPA Filter	AR-1-HP	1
11 Filter Securement Bracket	AP-12	1
12 Pre-Filter	AR-2-FP	1
13 Housing Lid	AP-13-C	1
14 Intake Plug	AP-14	1
15 Carbon Filter	AR-C-FP	1



AP-450 Max

Professional Grade Air Purifier

LIMITED MANUFACTURER'S WARRANTY

The manufacturer warrants that goods sold to the original user shall be free from defects in material and workmanship as follows:

1-year parts and labor on the entire unit.

DAY 1-30: A unit that fails within the first 15 days after the sale to an end-user may be eligible to be replaced with a new unit at the sole discretion of the manufacturer. All transportation costs will be covered for the customer.

DAY 30-YEAR 1: A unit that fails between 15 and 365 days after sale will have parts and labor charges covered under warranty, but transportation charges are to be paid by the customer. Transportation costs include travel charges by repair personnel, or shipping charges to move the unit to and from a repair location.

The manufacturer will not be responsible for:

1. Useful filter life / replacement filters.
2. Damage due to failure to perform normal maintenance as outlined in the Instruction Manual.
3. Failure to start due to voltage conditions, blown fuses, open circuit breakers, or any other damages due to the inadequacy or interruption of electrical services.
4. Damage or repairs needed as a consequence of any misapplication, abuse, neglect, unauthorized alteration, improper servicing, or operation, including operation outside the voltage and frequency limitations as stated on the unit rating plate.
5. Damage as a result of flooding (immersion), fires, lightning, freezing of residual water, corrosive environment, or other conditions beyond the control of the manufacturer.
6. Reimbursement for warrantable replacement parts not supplied by the manufacturer.
7. Shipping damage, or damage as a result of abuse in transporting the unit.

The manufacturer does not warrant that the goods sold are merchantable or fit for any particular purpose, and makes no warranties other than as stated in this section.

All other warranties, guaranties, or representations, express or implied, by operation of law or otherwise, are expressly disclaimed.

If circumstance warrants, the manufacturer may opt to refund the purchase price of such goods. Where applicable, as indicated above, the manufacturer will pay return transportation charges on returned goods not exceeding the transportation charges applicable to ship from original destination unless the returned goods are free from defect and conform to specifications. Be sure to review this instruction booklet. Returned goods which are found by the manufacturer to be free from defect and to conform to specifications shall be held for Purchaser's shipping instructions, which shall be furnished promptly upon request.

The manufacturer's liability shall in no event extend beyond replacement, repair or refund of the purchase price and shall not be liable under any circumstances for special, contingent, incidental or consequential damages, nor for losses, damages, or expenses directly or indirectly arising from the use of the goods, including without limitation, warehousing, labor, handling and service charges, die, equipment, or machine breakage, nor for costs, lost profits or loss of good will. The use of substitute parts and/or filters in this product voids all warranties and performance claims. The remedies set forth herein are exclusive.

Any replacement parts supplied under warranty will be warranted for the balance of the product's warranty.

Establishing the proof of purchase date for warranty purposes is the responsibility of the end-use customer, failing which, the effective date will be based upon the date of manufacture plus thirty (30) days. Retain your bill of sale as proof of purchase.

For warranty information and assistance contact B-Air® at 877.800.2247 or email warranty@b-air.com.

AP-450 Max

Professional Grade Air Purifier



B-AIR.COM

DESIGNED & ENGINEERED
IN CALIFORNIA

550 S. Ayon Avenue
Azusa, California 91702

Local: **626.385.3300**

Fax: **626.385.3307**

877.800.BAIR

WATER DAMAGE RESTORATION DIVISION