

ADCRAFT®



HRG-05
5 Rollers



HRG-07
7 Rollers



HRG-09
9 Rollers

Hot Dog Grill Instruction Manual

This manual contains important information regarding your Adcraft unit. Please read this manual thoroughly prior to equipment set-up, operation, and maintenance. Failure to comply with regular maintenance guidelines outlined in this manual may void the warranty.



IMPORTANT SAFEGUARDS

- The product shall only be operated by someone over the age of 18, of sound mind, and not under the influence of any drugs or alcohol, who has been trained in the correct operation of this machine, and is wearing authorized, proper safety clothing.
- Any modification to the machine voids any warranty, and may cause harm to individuals using the machine or in the vicinity of the machine while in operation.
- Keep this manual and invoice in a safe and dry place for future reference.
- The warnings, cautions and instructions discussed in this instruction manual cannot cover all possible conditions and situations that may occur. It must be understood by the operator that common sense and caution are factors which cannot be built into this product, but must be supplied by the operator.
- **NEVER** use this product for anything other than its intended use. **NEVER** modify this product. Failure to comply with the precautions, warnings and recommendations in this manual will nullify your warranty and may result in injury or even death.
- **ALWAYS** ensure that this hot dog roller is plugged into a grounded outlet with the proper power supply available.
- **DO NOT** unplug the machine by pulling or tugging on the power cord. Firmly grasp the plug and remove from outlet.
- **MAKE SURE** that the power outlet, plug and power cords used are in good condition. Worn, frayed or damaged plugs, cords and outlets should be replaced or repaired by a certified electrician who is properly qualified to meet local safety and electrical codes. Power supply cords should be replaced by the manufacturer. **AVOID** using extension cords or 3-prong adapters.
- To reduce the risk of electrical shock or fire, **MAKE SURE** that your unit is properly grounded. **NEVER TAMPER WITH, REMOVE OR CUT THE GROUNDING PIN!** The wall outlet used with this roller **MUST** be properly grounded. If you do not have a grounded outlet, have one installed by a certified electrician who is properly qualified to meet local safety and electrical codes.
- Make sure your machine is unplugged when you conduct any maintenance or repair. A qualified service technician should always perform service or repair.
- This product is certified for household or commercial use.
- **DO NOT** cover the power cord. **DO NOT** immerse cord in water or use in high traffic areas. **DO NOT** run cord over carpets or heating sources or elements. **NEVER** use with damaged cords or plugs.
- **INTENDED FOR UPRIGHT, FREESTANDING USE ONLY. DO NOT** install in cabinet or enclosed spaces.
- **DO NOT** operate with missing or broken parts.
- This product is intended for **INDOOR USE ONLY. DO NOT USE OUTDOORS.**
- Only qualified repair personnel should perform service. Service or maintenance performed by unqualified personnel could result in injury.
- **DO NOT** operate this roller in explosive atmospheres, such as in the presence of flammable liquids, gases, or dust.
- **DO NOT** tamper with or modify the controls.
- **KEEP UPRIGHT** when transporting. **DO NOT** UPEND OR TURN UPSIDE DOWN.
- All the safety devices must be checked before operation.
- Turn the machine off immediately when defects or malfunctions are found.
- The packaging components are classified as normal solid urban waste and can therefore be disposed of without difficulty.
- In any case, for suitable recycling, we suggest disposing of the products separately (differentiated waste) according to the current norms.
- **DO NOT DISCARD ANY PACKAGING MATERIALS IN THE ENVIRONMENT!**



CHECK PACKAGE UPON ARRIVAL

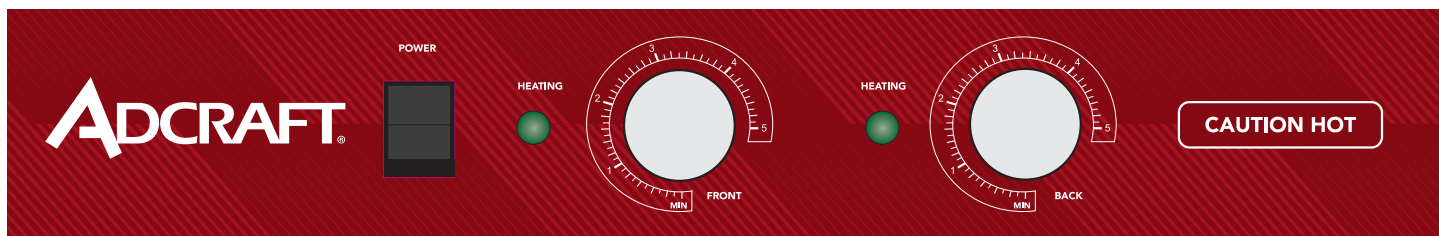
- Upon receipt of the shipment please inspect for external damage. If no damage is evident on the external packaging, open carton to ensure all ordered items are within the box, and there is no concealed damage to the machine.
- If the package has suffered rough handling, bumps or damage (visible or concealed), please note it on the bill of lading before accepting the delivery and contact us within 24 hours, so we may initiate a claim with the carrier. A detailed report on the extent of the damage caused to the machine must be filled out within three days, from the delivery date shown in the shipping documents.
- Please save these instructions for future reference. Also save the original box and packaging for shipping the equipment if servicing or returning of the machine is required.

SPECIFICATIONS

MODEL		HRG-05	HRG-07	HRG-09
NUMBER OF ROLLERS		5	7	9
LENGTH OF ROLLERS		17.9" / 454 mm	17.9" / 454 mm	17.9" / 454 mm
PACKAGING WEIGHT		17.2 lbs. / 7.8 kgs.	21.2 lbs. / 9.6 kgs.	26 lbs. / 11.8 kgs
PRODUCT DIMENSIONS (W X D X H)	INCHES	22.6" x 9.8" x 7.3"	22.6" x 12.9" x 7.3"	22.6" x 16" x 7.3"
	(MM)	574 x 250 x 185 mm	574 x 328 x 185 mm	574 x 406 x 185 mm
PACKAGING DIMENSIONS (W X D X H)	INCHES	25.2" x 12.4" x 9.1"	25.2" x 15.2" x 9.1"	25.2" x 18.3" x 9.1"
	(MM)	640 x 315 x 230 mm	640 x 385 x 230 mm	640 x 465 x 230 mm
CURRENT		5.4A	7.6A	9.75A
ELECTRICAL		120V / 60Hz / 1	120V / 60Hz / 1	120V / 60Hz / 1
POWER		650 W / 0.65 kW	910 W / 0.91 kW	1170 W / 1.17 kW
WEIGHT		13.9 lbs. / 6.3 kgs.	17.9 lbs. / 8.1 kgs.	22 lbs. / 10 kgs.
OPTIONAL SNEEZE GUARD ITEM NUMBER		HRG-05-COV	HRG-07-COV	HRG-09-COV

TEMPERATURE CONTROLS

- The Temperature = 482°F (250°C) on the Maximum Heat Setting #5



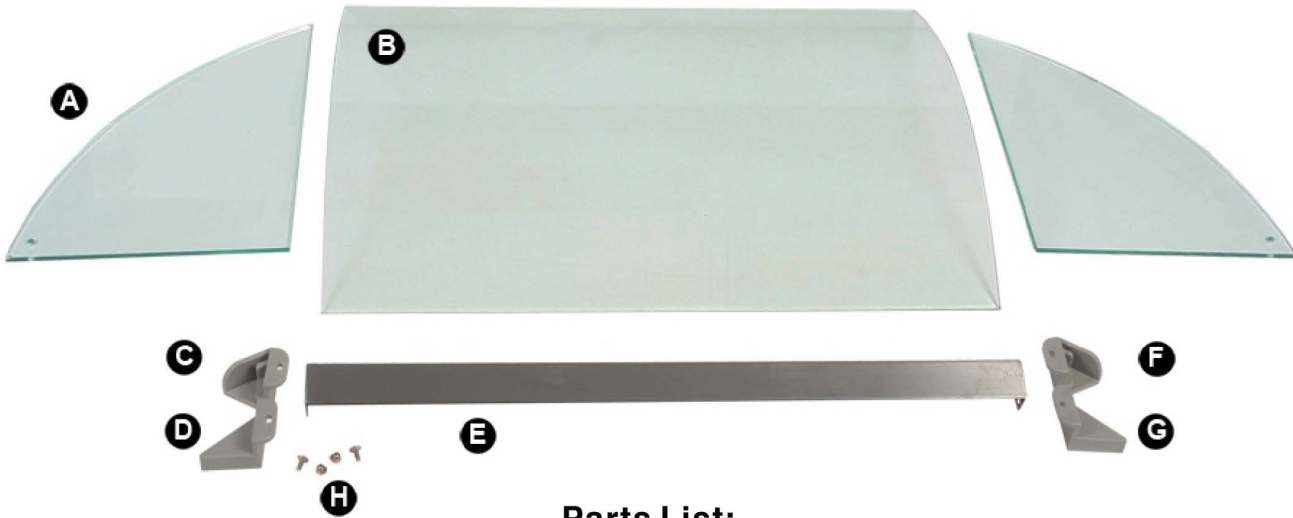
INSTALLATION

STORAGE AND TRANSPORTATION

- NEVER STORE UPSIDE DOWN.
- When storing any hot dog roller, first be sure to DISCONNECT FROM POWER SUPPLY.
- Store away from moisture and flammable materials, fumes and chemicals.
- Cover when stored for long periods to prevent dust buildup.
- When transporting the roller/grill, AVOID EXCESSIVE VIBRATION.
- KEEP UPRIGHT when transporting. DO NOT UPEND OR TURN UPSIDE DOWN.



OPTIONAL SNEEZE GUARD ASSEMBLY



Parts List:

- | | |
|--------------------------------|---|
| A) 2 Glass Side Panels | E) Front Stainless Trim Rail |
| B) Curved Glass Top | F) Right Side Rear Glass Mount |
| C) Left Side Rear Glass Mount | G) Right Side Front Glass Mount |
| D) Left Side Front Glass Mount | H) 2 Small Phillips Head Bolts & 2 Nuts |

Please review the parts list above and ensure that you have all the parts necessary to complete assembly.

1. Remove the four screws, two on each side, from the top inner area of the hot dog roller. *See Figure 1.*
2. Place the back side glass mount (C) onto the machine and reinsert the screw. Do not tighten down the screw at this time because we may need to move it forward or back in a later step. *See Figure 2.*
3. Repeat step two for the other side rear glass mount (F) and the two front glass mounts (D&G). Remember not to tighten down the screws just yet. *See Figure 3.*
4. Place one of the glass side panels (A) into one set of glass mounts. The mounts may need to be moved forward or back to get a snug fit. Once the fit is snug you may tighten down the screws to hold the glass securely. Repeat for the other side. *See Figure 4.*
5. Slide the curved top glass (B) into the rear side glass mounts and push all the way down. *See Figure 5.* Ensure the edge of the curved top glass and the edge of the side glass are flush. *See Figure 6.* If the glass seems too snug you may need to loosen one of the screws holding the rear side glass mounts. Once the top glass is in place, tighten the screw back down again.
6. Set the front stainless trim rail (E) onto the edge of the top glass. Ensure that the holes in the ends of the trim rail line up with the holes in the top corners of the side glass (A). *See Figure 7.*
7. Finally, secure the front stainless trim rail to the side glass with the nuts and bolts (H). *See Figure 8.*
* NOTE: Be sure to NOT over tighten the nuts and bolts, as this might crack the glass.

IMPORTANT!

- **BEFORE** using your hot dog cooker for the first time, apply a vegetable oil such as sunflower oil or canola oil to the ends of your rollers. This will help to keep them turning smoothly and easily.
- **AVOID** using non-stick sprays because these can contain lecithin, which will cause an eventual buildup on your rollers.

OPERATION

1. Turn the Power switch to ON.
2. Use the temperature control dials to the desired settings.
3. To cook product more rapidly, turn the temperature dials to their highest settings, or in a clockwise direction. To cook more slowly, or to hold already cooked product on a warm setting, adjust the temperature dial down, or in a counterclockwise direction.

- * Note: The rollers have separate temperature dials to control the heat settings for different sets of rollers. The front dial controls all rollers (number of rollers will vary with model), while the Back dial controls the last 3 rollers of your cooker. This allows you to cook some hot dogs more quickly, while holding more cooked product at a lower warming temperature.
- * In addition, the green heating indicator lights marked "Heating" will be lit when the rollers are actively being heated; when they have reached the temperature set by the temperature dials, the light will go out. Increasing the temperature setting for a group of rollers will cause the indicator light to go on and when the new temperature is reached the light will extinguish to let you know that the new setting is reached.
- * CAUTION! Rollers will be hot. Use care when cleaning, adding product or serving product!

FIGURE DRAWINGS

Remove 2 Screws
From Hot Dog Roller



Figure 1

Reinsert screws but
do not tighten at
this time



Figure 2

Both side glass mounts installed



Figure 3

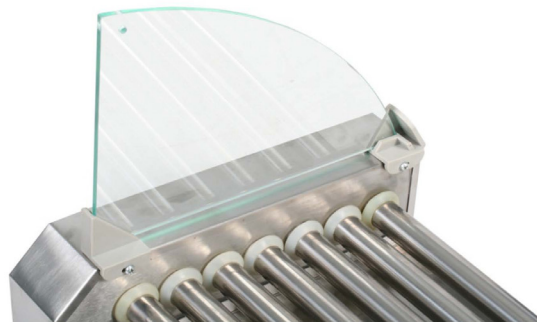


Figure 4

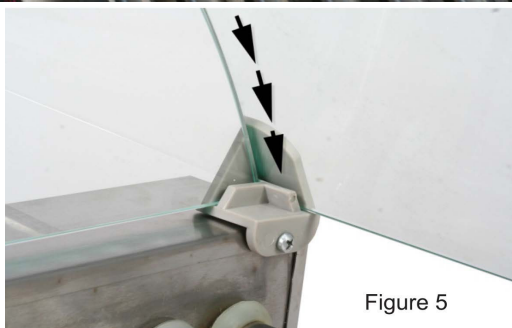


Figure 5



Figure 6

Figure 7

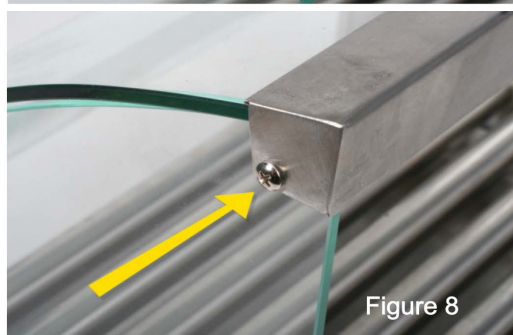
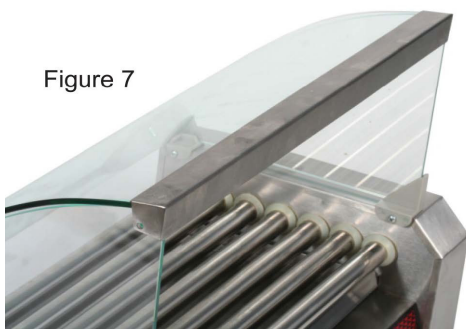


Figure 8

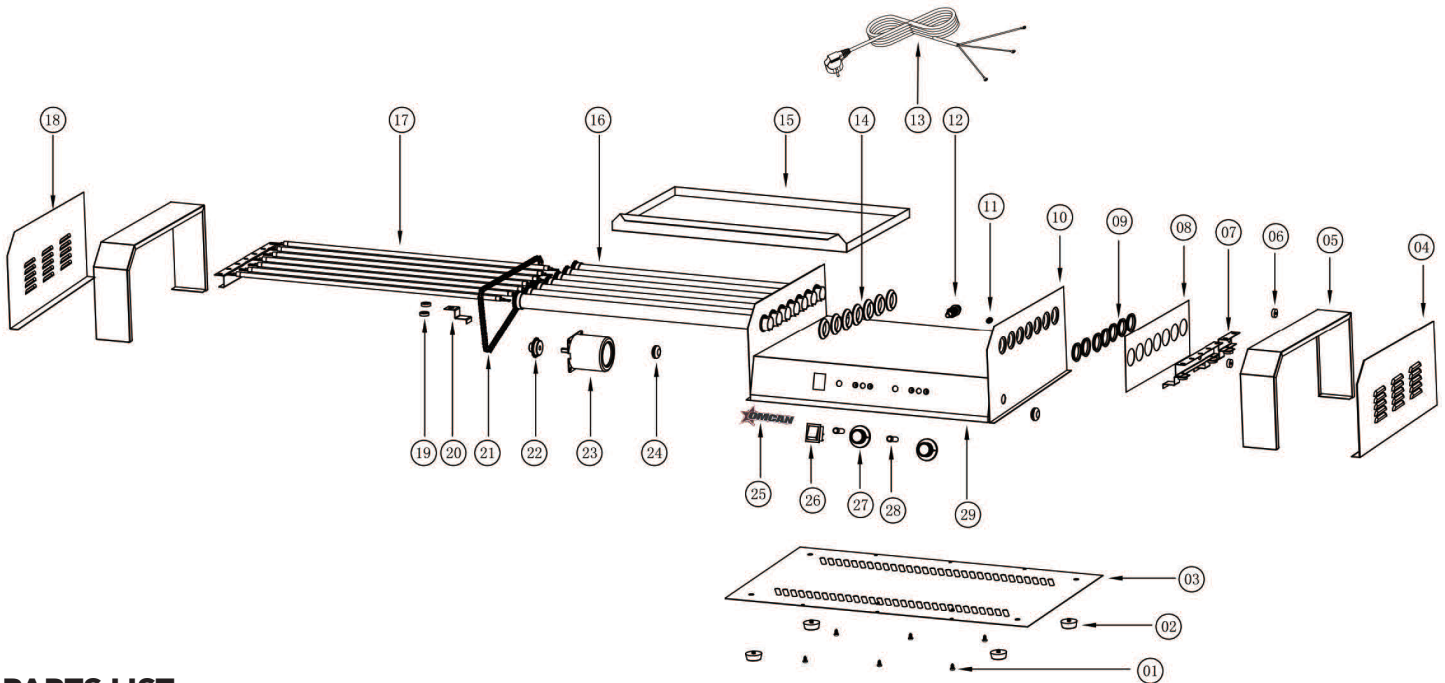
MAINTENANCE

- **DO NOT** immerse any part of this machine in water. Turn the machine OFF prior to cleaning or maintenance and allow to cool before touching rollers.
- **CAUTION!** Rollers will be hot.
- Follow the cleaning and maintenance guidelines to ensure a long life for your machine.

CLEANING

1. Turn the Power switch to OFF.
2. Use a soft cloth or towel to wipe the surfaces of the rollers.
 - * **DO NOT USE METAL TO CLEAN YOUR ROLLERS!**
 - * This may result in damage to the machine. In most cases the natural oils exuded from sausages or hot dogs will keep the machine well lubricated. You should simply need to wipe the rollers and outside surfaces of your machine with a cloth to remove excess oils or dust. Should you need to remove any caked on material such as cheese or condiments, use a wooden utensil and then clean with a soft cloth.

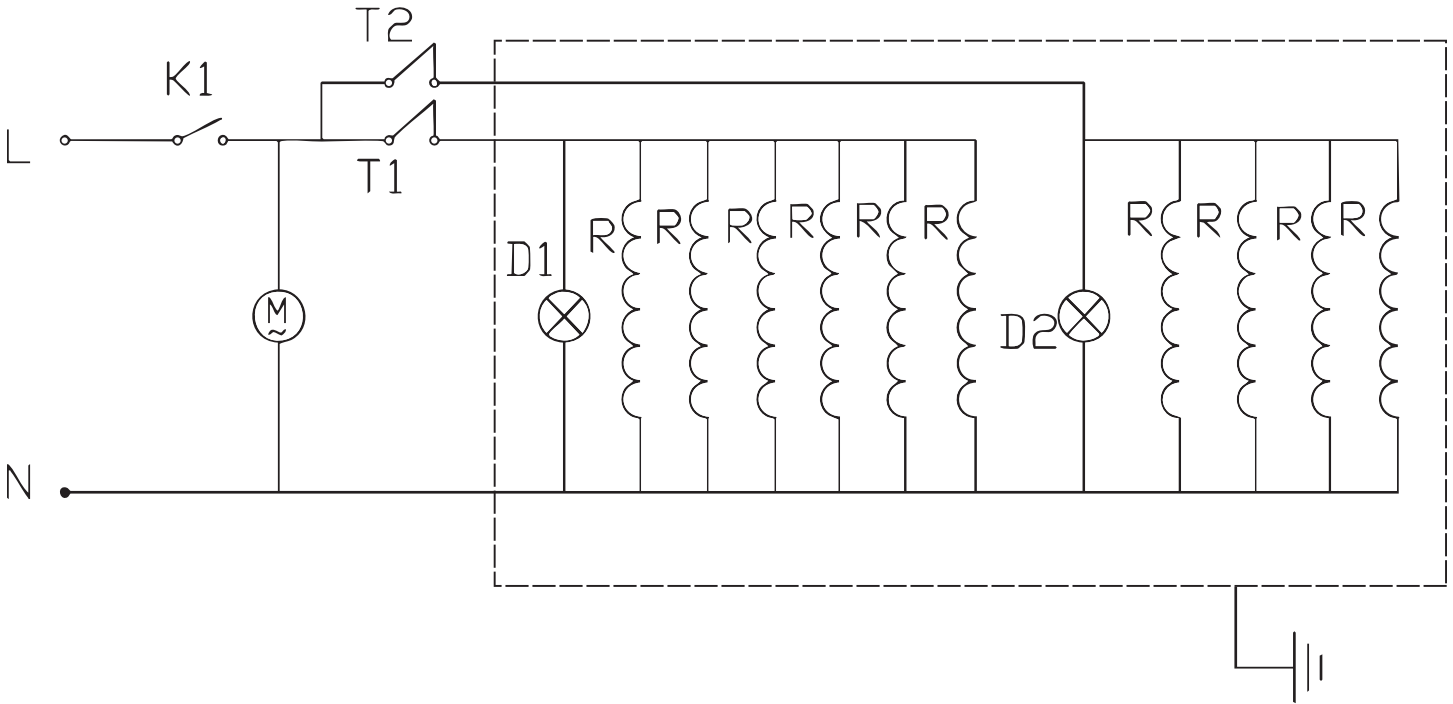
EXPLODED PRODUCT DIAGRAM



PARTS LIST

NO.	PART NAME	NO.	PART NAME	NO.	PART NAME
1	Tapping Screw	11	Ground Wire Screw	21	Roller Chain
2	Rubber Foot	12	Fuse	22	Wheel Gear
3	Bottom Plate	13	Power Plug	23	Motor
4	Right Side Plate	14	Rubber Gasket	24	Gasket
5	Left and Right Frame	15	Oil Tray	25	Logo
6	Silicone Pad	16	Roller	26	Switch
7	Roller Heating Element Fixed Plate	17	Heating Pipe	27	Temperature Controller with Knob
8	Left and Right Fixed Plate	18	Left Side Plate	28	Indicator Light
9	Roller Sleeve	19	Insulated Gasket	29	Decal Sticker
10	Right Inside Plate	20	Insulation Pad		

CIRCUIT DIAGRAM



CIRCUIT LEGEND

ID	DESCRIPTION
K1	Power Switch
R	Heater (130W / 110VAC)
M	Motor
T1 / T2	Thermostatic Controller
D1 / D2	Heating Indicator Light



1-YEAR LIMITED WARRANTY

Admiral Craft Equipment Corp. (the "Company") warrants this product (the "Product") will be free from failures in material and workmanship for one (1) year from the date of original purchase with proof of purchase, provided that the Product is operated and maintained in conformity with the Owner's Manual. This Limited Warranty is non-transferable. During this period, your exclusive remedy is repair or replacement without charge of the Product or any component found to be defective at the Company's discretion. If the Product or any component is no longer available, the Company will replace it with a similar one of equal or greater value. This Limited Warranty is void if the Product is used with voltage other than 120 Volts. **THIS WARRANTY IS IN LIEU OF ALL IMPLIED WARRANTIES, INCLUDING WARRANTIES OF MERCHANTABILITY, FITNESS FOR A PARTICULAR PURPOSE, PERFORMANCE, OR OTHERWISE, WHICH ARE HEREBY EXCLUDED. IN NO EVENT SHALL THE COMPANY BE LIABLE FOR ANY DAMAGES, WHETHER DIRECT, INDIRECT, INCIDENTAL, FORESEEABLE, CONSEQUENTIAL, OR SPECIAL ARISING OUT OF OR IN CONNECTION WITH THIS PRODUCT INCLUDING DAMAGES ARISING FOR FOOD OR BEVERAGE SPOILAGE CLAIMS.**

You may have other legal rights depending upon where you live. Some States or Provinces do not allow limitations on warranties so the foregoing may not apply to you.

WARRANTY EXCLUSIONS

IMPROPER ELECTRICAL CONNECTIONS:

The Company is not responsible for the repair or replacement of failed or damaged components resulting from electrical power failure, the use of extension cords, low voltage, or voltage spikes to the Product.

IMPROPER USAGE:

This Limited Warranty does not cover failure or other damages to the Product resulting from (i) improper usage or installation or failure to clean and/or maintain the Product as set forth in the Owner's Manual; or (ii) accident, misuse, abuse, negligence, or modification or alteration of the Product.

CONSUMABLES:

This Limited Warranty does not include consumables or wear-and-tear items such as legs, feet, plastic component parts, splash shields, filters, gaskets, and non-stick cooking surfaces.

ADJUSTMENTS & CALIBRATIONS:

Leveling, tightening of fasteners, or utility connections normally associated with the original installation are the responsibility of the dealer, installer, or the end user and not the responsibility of the Company and will not be considered warranty issues.

If you think the Product has failed, or requires service, within its warranty period, please contact the Company's Customer Care Department through our website at: www.admiralcraft.com "Service" --> "Technical Support Request". A receipt proving the original purchase date will be required for all warranty claims, handwritten receipts are not accepted. You may also be required to return the Product for inspection and evaluation. Return shipping costs are not refundable. The Company is not responsible for returns lost in transit.

This Limited Warranty is Valid only in the USA and Canada.