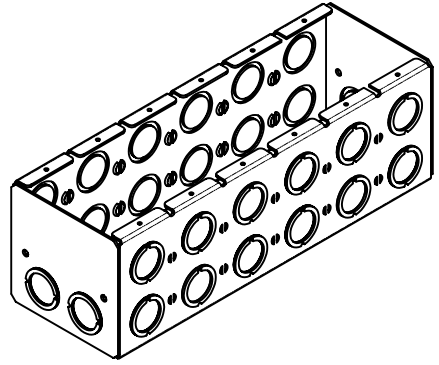
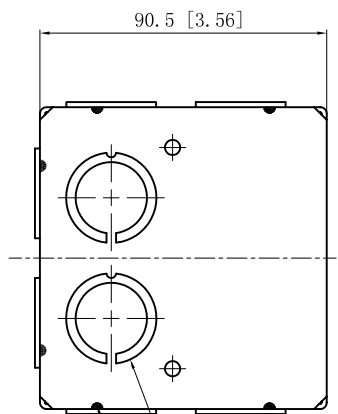
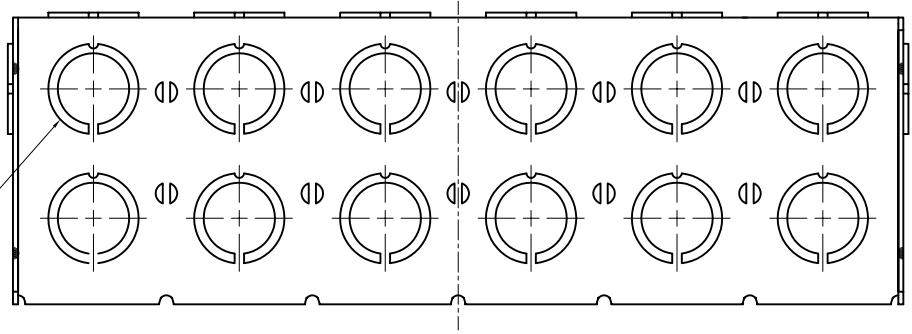


SIDES	BOTTOM
28 1/2"-3/4" MOON KNOCKOUTS	12 KNOCKOUTS
	12 1/2"-3/4" MOON KNOCKOUTS
Material: Steel-0.0625"-G60 Galvanized	

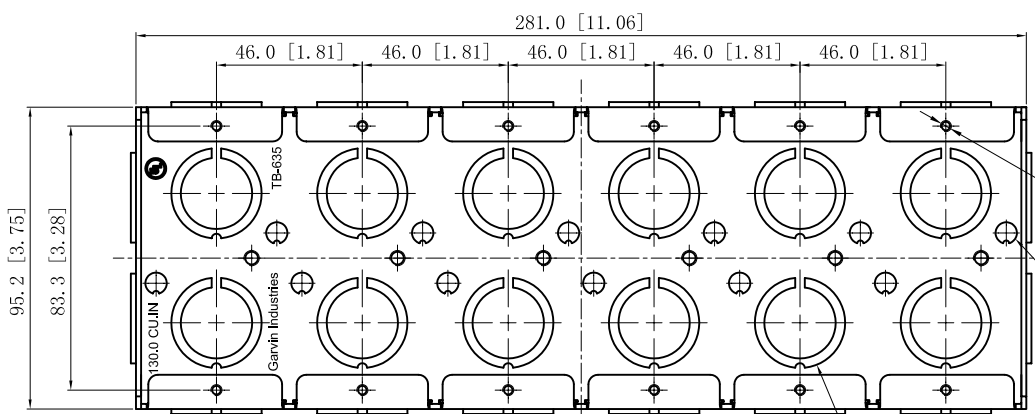


24 1/2"-3/4" MOON KNOCKOUTS $\phi=22.50[\phi=0.886]$
 $\phi=28.50[\phi=1.122]$ MIRROR



4 1/2"-3/4" MOON KNOCKOUTS $\phi=22.50[\phi=0.886]$
 $\phi=28.50[\phi=1.122]$ MIRROR

12 PLACES SPOT WELDING



12 1/2"-3/4" MOON KNOCKOUTS $\phi=22.50[\phi=0.886]$
 $\phi=28.50[\phi=1.122]$

This data sheet is for reference only .GARVIN INDUSTRIES reserves the right to make changes to the design without prior notice.

DESCRIPTION
TRADE REFERENCE TERMS

STANDARD PACKING
1 PCS

GARVIN INDUSTRIES		
TITLE SOLID MASONRY BOX 3-1/2" DEEP		
SIZE A4	DWG NO. TB-635	REV B
DATA SHEET		