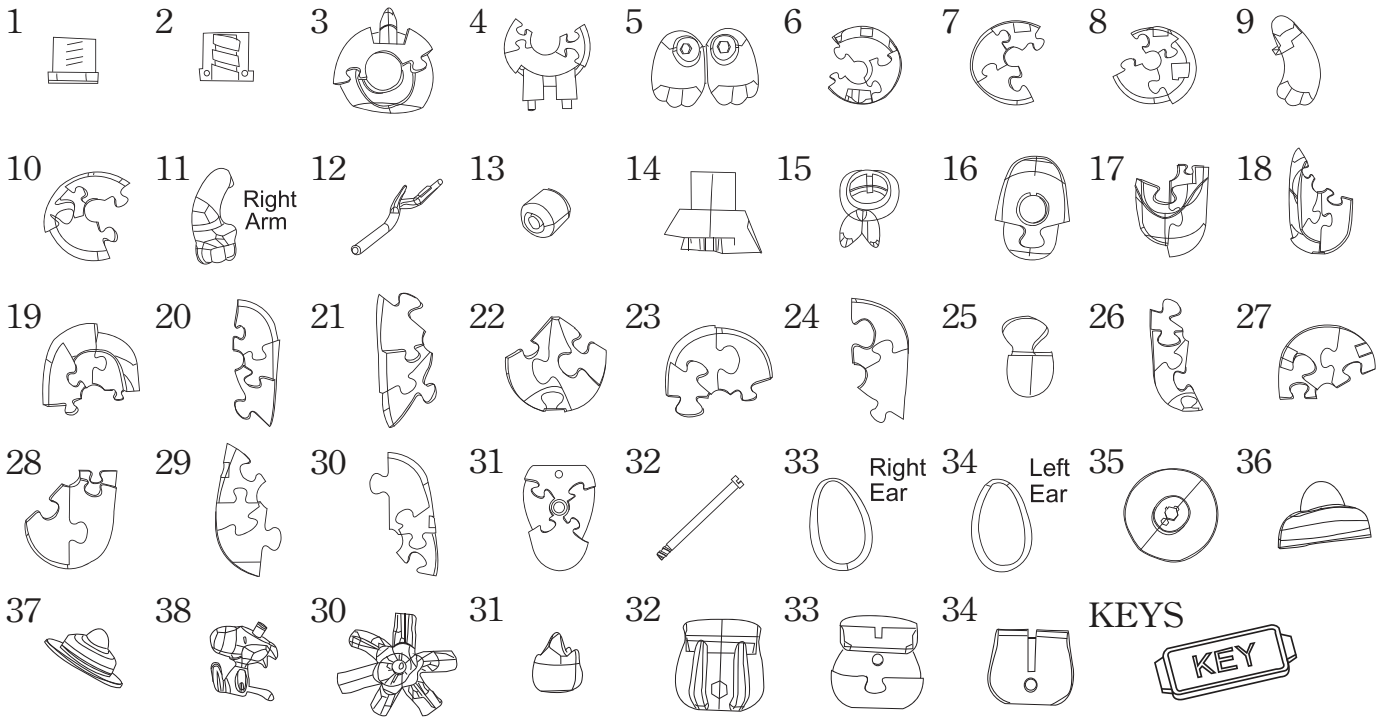


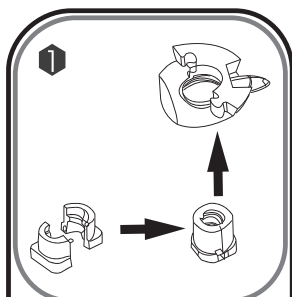
INSTRUCTIONS

1. Please count and make sure all pieces are present before assembly.
2. The pole pieces are delicate. To prevent damage, do not use excessive force.
3. Assemble crystal puzzle by putting the puzzle pieces together in the order shown below.
4. Missing a piece? Email [info@ugames.com](mailto:info@ugames.com) or call (415) 503-1600 with missing piece number.

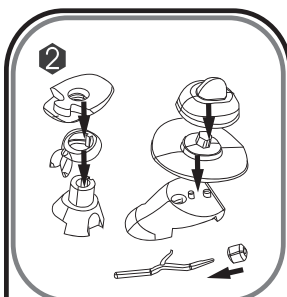
SNOOPY CAMPFIRE



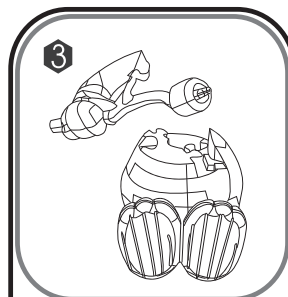
HINTS



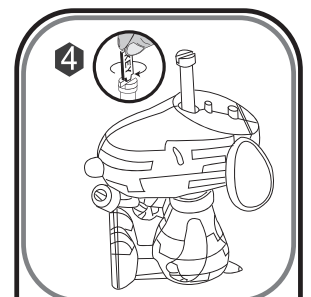
Enclosed are 2 small spiral caps. Before starting assembly combine and insert into bottom.



Some pieces have a positioning mark to assemble with other pieces.



Insert the marshmallow stick into the hand prior to installing the arm to the body.



Use the center pole to lock up all pieces tightly with the key included.

