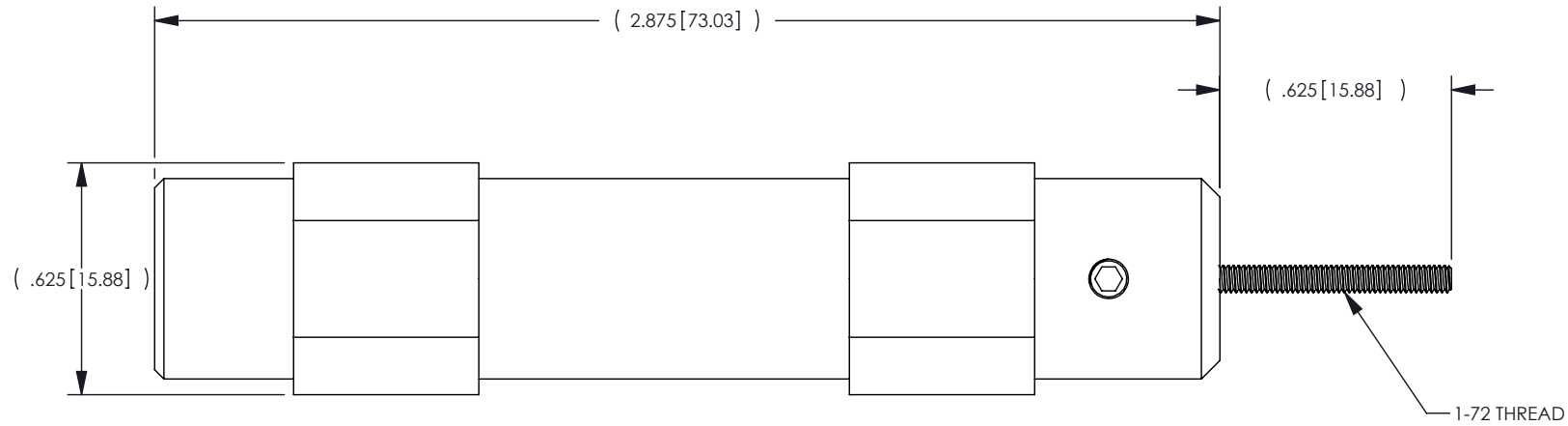
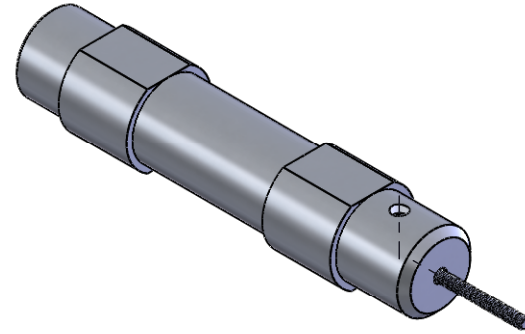


NOTES: UNLESS OTHERWISE SPECIFIED

1. MATERIAL SPECIFICATIONS:
 BODY: ALUMINUM
 REMOVAL SHAFT: STAINLESS STEEL
2. FINISH SPECIFICATIONS:
 BODY: ANODIZED
 REMOVAL SHAFT: PLATED
3. FOR USE WITH WINCHESTER PART NUMBER 7765-3-3

REV	DESCRIPTION	BY DATE	APPD
01	RELEASED DRAWING PER ER22701	JDS 06/23/10	WPM



CATALOG P/N: KTH-2317

PER ASME Y14.5M-1994 UNLESS OTHERWISE SPECIFIED: DIMENSIONS ARE IN INCHES [MM] TOLERANCES: DECIMAL: .XX [X.X] ± .01 [0.3] .XXX [X.XX] ± .005 [0.13] .XXXX [X.XXX] ± .XXXX ANGLES: ± 2° SCALE: 1:1		 by WINCHESTER <small>ELECTRONICS</small> Winchester Electronics Corporation 62 Barnes Industrial Road North Wallingford, Connecticut 06492	
CUSTOMER SALES DRAWING		THIRD ANGLE 	REMOVAL TOOL W/SWABS & HSG
DRAWN KC	DATE 08/01/09	APPROVED JDS	DATE 06/30/10
APPROVED WPM	DATE 06/30/10	APPROVED JCF	DATE 06/30/10
A		SDKTH-2317	SHT OF REV 1 1 01