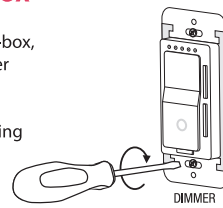


4.15625

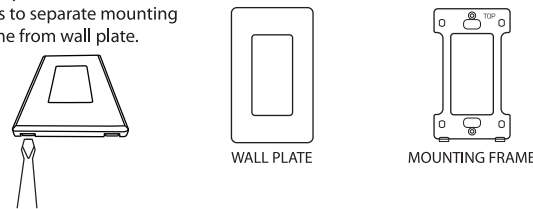
**4 FIT DIMMER INSIDE THE WALL-BOX**

- Carefully position all wires inside the wall-box, leaving enough room to insert the dimmer housing.
- Secure the dimmer inside the wall-box using the provided mounting screws.



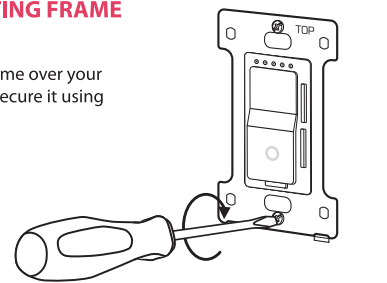
**5 SEPARATE MOUNTING FRAME FROM WALL PLATE**

Gently insert screwdriver into slots to separate mounting frame from wall plate.



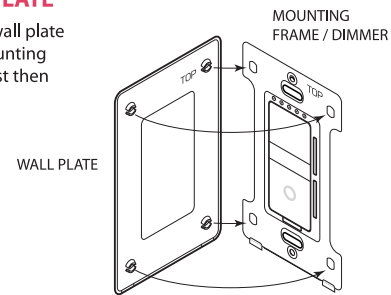
**6 INSTALL MOUNTING FRAME**

Place the mounting frame over your installed dimmer and secure it using provided screws.



**7 INSTALL WALL PLATE**

Snap the decorative wall plate over the installed mounting frame with the top first then the bottom.



WALL PLATE SNAPS ONTO MOUNTING FRAME

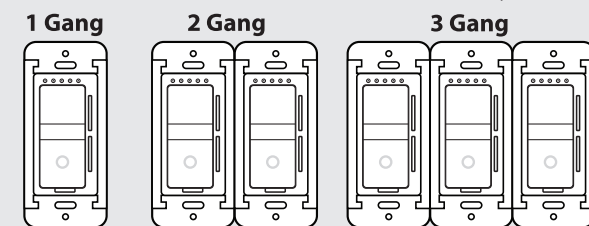
**8 DIMMER OPERATION**

Restore power to enable dimmer operation. The indicator lights on the dimmer will begin blinking. To use as a traditional (non-smart) dimmer wait until the blinking stops. This will take around 3 minutes.

To enable smart features, see step 9

**MULTI-GANG INSTALLATION**

You may need to purchase multi-gang cover plates (not included). If there is a previous dimmer in the switch box, be sure to turn the power OFF at the circuit breaker or fuse box and then remove the wall-plate.



WHEN INSTALLING THIS DIMMER IN MULTI-GANG LOCATIONS, FOLLOW THE MAXIMUM RATINGS BELOW:

| MAXIMUM RATINGS | 1-GANG | 2-GANG | 3-GANG |
|-----------------|--------|--------|--------|
| DIMMABLE LED    | 150W   | 150W   | 150W   |
| INCANDESCENT    | 450W   | 350W   | 300W   |

4.21875

**9 ENABLE SMART FEATURES**

**DOWNLOAD AND INSTALL THE FEIT ELECTRIC APP**

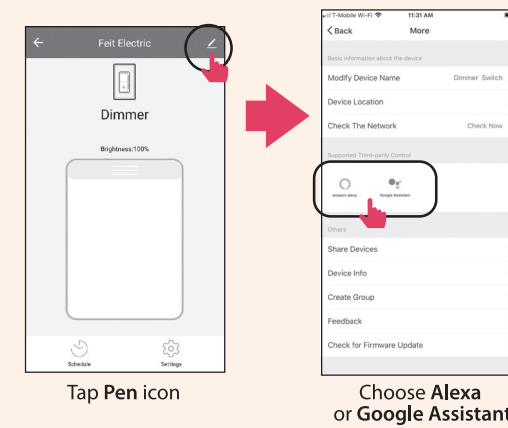
- Search for the Feit Electric App in the App Store or Google Play Store.
- Download and install the Feit Electric App on your smart device.

**SET UP THE WI-FI SMART DIMMER USING THE FEIT ELECTRIC APP**

- Check to be sure the Wi-Fi Smart Dimmer is in pairing mode. The indicator light must be blinking rapidly to connect. If not already blinking, press and hold the power button for 5 seconds. Use the Feit App to complete the set up.
- Tap Add Device or the + sign, then select Smart Dimmer and confirm. You will be prompted to enter your Wi-Fi network and password.

Be sure to connect to a 2.4 GHz Wi-Fi network that covers your installation location.

**(OPTIONAL) CONNECT TO GOOGLE ASSISTANT OR ALEXA USING THE IN APP GUIDE**



FOR DETAILED INSTRUCTIONS ON SMART FEATURES, SEE THE APP USER GUIDE.

**SET YOUR DIMMING RANGE AND TROUBLESHOOT FLICKERING**

If you experience flickering, first tighten any loose bulbs and ensure all bulbs are rated "dimmable".

If flickering continues, it may be caused by irregular power surges and spikes of electric energy moving along power lines and building wiring.

Flickering more frequently occurs at lower dim levels. There are two ways to set the lowest possible dimming level which may help with flickering.

If you have enabled smart features, you can use the app. Under Settings, adjust the minimum brightness until you do not see flickering (step 11 in App User Guide).

You can also set this low-dim point manually on the dimmer:

- Press and hold dim (+) and dim (-) buttons simultaneously for at least 5 seconds. The power indicator light (circle) on the switch will start blinking (repeating one long blink then two fast blinks) and your lights will be at the current lowest dimming brightness level.
- Hold either dim (+) or dim (-) to adjust light until you do not experience flickering. In some circumstances, your bulbs may be at a significantly bright light level.
- Once you are at the minimum brightness level without flickering, repeat step 1 by pressing and holding dim (+) and dim (-) buttons simultaneously for at least 5 seconds. The power indicator circle on the switch will return to a solid light. You will now be able to dim up to 100% and down to your set minimum brightness.

**LIGHT LEVEL INDICATOR LIGHTS**

The LEDs will light up to indicate the selected brightness level.

From left to right:

| LED 1  | LED 2   | LED 3   | LED 4   | LED 5    |
|--------|---------|---------|---------|----------|
| 1%-20% | 21%-40% | 41%-60% | 61%-80% | 81%-100% |

**POWER INDICATOR LIGHT**

- Blinking Light** – Pairing mode (lasts 3 minutes)
- Solid Light** – On when unit is paired or after 3 minutes if no Wi-Fi connection

4.3125

**Need Help?**

FAQs and the latest versions of user guides can be found at [feit.com/help](http://feit.com/help) and [feit.com/smart](http://feit.com/smart). To reach customer support please visit [feit.com/contact-us](http://feit.com/contact-us)

**WARNING:**

This product may represent a possible shock or fire hazard if improperly installed or attached in any way. Product should be installed in accordance with the owners manual, current electrical codes and/or the current National Electric Code (NEC).

**RISK OF ELECTRIC SHOCK:** TURN OFF THE MAIN POWER AT THE CIRCUIT BREAKER BEFORE INSTALLING.

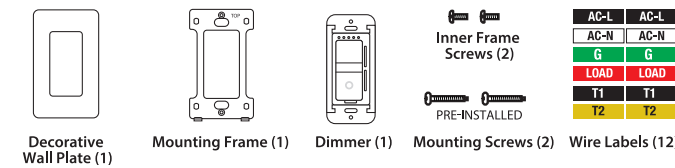
**CAUTION:** FOR CONTROL OF INCANDESCENT OR LED LUMINAIRES ONLY.

**CAUTION: RISK OF FIRE:**

- DO NOT USE WITH CONTROL RECEPTACLE OUTLETS, FLUORESCENT LIGHTING FIXTURES, MOTOR-OPERATED APPLIANCES OR TRANSFORMER SUPPLIED APPLIANCES.
- DO NOT EXCEED ELECTRICAL RATINGS
- USE ONLY COPPER WIRES WITH THIS DEVICE
- USE INDOORS ONLY
- SHALL INSTALL IN A METALLIC OUTLET BOX HAVING MIN. WIDTH 50 MM, OR A NON-METALLIC BOX.

ONLY USE WITH SOLID COPPER WIRE OR COPPER-CLAD WIRE.

**PARTS INCLUDED**



**TROUBLESHOOTING TIPS**

**Difficulty connecting dimmer to a Wi-Fi network:**

- Make sure the Wi-Fi network is a 2.4 GHz network.
- Smart Dimmer will not connect to a 5 GHz network.
- Test your Wi-Fi network with other devices such as your phone to make sure it is operating properly.
- The Wi-Fi connection may not have good coverage during set up. Try moving the Smart Dimmer closer to your Wi-Fi router.
- Your Wi-Fi network password is case sensitive, make sure you are entering it correctly.

**Lights are flickering:**

- Lamp has a bad connection.
- The wire connections are not firmly secured.
- Set your dimming range and troubleshoot flickering.

**Light does not turn ON**

- Circuit breaker or fuse has tripped.
- Bulb or lamp is burned out.

**Power indicator light does not turn ON:**

- Neutral is not connected to dimmer (white wire).
- Confirm that dimmer is being supplied from a 120 V AC, 60 Hz source ONLY.

**Intermittent dimmer operation:**

- Confirm that the Load being controlled does not exceed 450W incandescent or 150W LED.

**REPLACING LIGHT BULBS**

- Make sure dimmer switches are in off position (no light level indicator lights are lit).
- To ensure there is no power at the socket when replacing light bulbs, turn off power at circuit breaker or fuse.
- Air gap switch can be used to disable the dimmer in single pole (only one smart dimmer on a circuit and no other switch or dimmer) applications. This is not intended to replace turning off power at circuit breaker or fuse.

**NOTE:**

**Dimmable LEDs may not dim as low as incandescent bulbs. Dimming range of dimmable LEDs can vary from manufacturer to manufacturer. This dimmer has an adjustable dimming range. If your bulbs do not dim to your satisfaction, hum, buzz or flicker see "Set your dimming range and troubleshoot flickering"**

Compatible with Feit Electric dimmable LED bulbs and most other dimmable LED bulbs. Dimming performance may not be the same to dimming of incandescent bulbs. Some possible dimming variations include but are not limited to: less dimming range than an incandescent bulb; dimming less smooth than an incandescent bulb; flicker or shimmer at certain light levels; and, buzzing or humming at certain light levels. Feit Electric warrants the compatibility of this dimmer with Feit Electric LED dimmable bulbs and replacement of the dimmer is the sole remedy for incompatibility. Feit Electric does not warrant the compatibility of this dimmer with any other particular LED bulb.

4.3125



MODEL DIM/WIFI

**Wi-Fi Smart Dimmer Installation Guide**

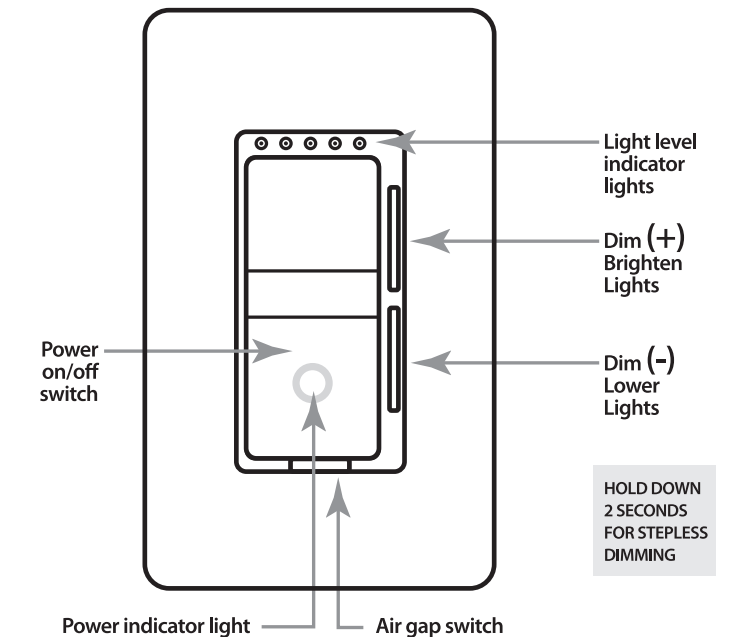
**Installation Requires a Neutral Wire**

DIMMER DOES NOT WORK WITH SMART BULBS

Congratulations on your purchase of Feit Electric digital Wi-Fi Smart Dimmers.

These dimmers are designed to dim incandescent and LED bulbs smoothly.

Dimming range will vary depending on the bulb type.



120 Volt • 60Hz  
450 Watt MAX incandescent  
150 Watt MAX dimmable LED

This device complies with part 15 of the FCC Rules. Operation is subject to the following two conditions: (1) This device may not cause harmful interference, and (2) this device must accept any interference received, including interference that may cause undesired operation. Note: This equipment has been tested and found to comply with the limits for a Class B digital device, pursuant to part 15 of the FCC Rules. These limits are designed to provide reasonable protection against harmful interference in a residential installation. This equipment generates, uses and can radiate radio frequency energy and, if not installed and used in accordance with the instructions, may cause harmful interference to radio communications. However, there is no guarantee that interference will not occur in a particular installation. If this equipment does cause harmful interference to radio or television reception, which can be determined by turning the equipment off and on, the user is encouraged to try to correct the interference by one or more of the following measures: Reorient or relocate the receiving antenna. Increase the separation between the equipment and receiver. Connect the equipment into an outlet on a circuit different from that to which the receiver is connected. Consult the dealer or an experienced radio/TV technician for help. Any changes or modifications not expressly approved by the manufacturer could void the user's authority to operate the equipment.

**LIMITED WARRANTY**

This product is warranted to be free from defects in workmanship and materials for up to one year from date of purchase. If the product fails within the warranty period, please contact Feit Electric at [info@feit.com](mailto:info@feit.com), visit [feit.com/contact-us](http://feit.com/contact-us) or call 1-866-326-BULB (2852) for instructions on replacement or refund. REPLACEMENT OR REFUND IS YOUR SOLE REMEDY. EXCEPT TO THE EXTENT PROHIBITED BY APPLICABLE LAW, ANY IMPLIED WARRANTIES ARE LIMITED IN DURATION TO THE DURATION OF THIS WARRANTY. LIABILITY FOR INCIDENTAL OR CONSEQUENTIAL DAMAGES IS HEREBY EXPRESSLY EXCLUDED. Some states and provinces do not allow the exclusion of incidental or consequential damages, so the above limitation or exclusion may not apply to you. This warranty gives you specific legal rights, and you may also have other rights which vary from state to state or province to province.

**FEIT ELECTRIC COMPANY Pico Rivera CA, USA**  
(800) 543-3348 | FAX (562) 908-6360 [www.feit.com](http://www.feit.com)

## IMPORTANT, RETAIN FOR FUTURE REFERENCE: READ CAREFULLY

# INSTALLING THE SMART DIMMERS

**NOTE: INSTALLATION OF THIS SMART DIMMER REQUIRES A NEUTRAL WIRE. IF A NEUTRAL WIRE IS NOT CONNECTED, THIS DIMMER WILL NOT WORK. CONSULT A QUALIFIED ELECTRICIAN.**

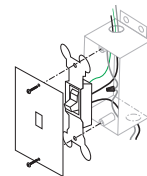
- 1 WARNING: TO AVOID FIRE, SHOCK OR DEATH, TURN OFF POWER AT CIRCUIT BREAKER OR FUSE AND TEST THAT POWER IS OFF BEFORE WIRING.**

- 2 IDENTIFY YOUR WIRING: SINGLE POLE OR 3-WAY**

**NOTE: for all the steps below if you are not certain you have the wiring described consult a qualified electrician for assistance.**

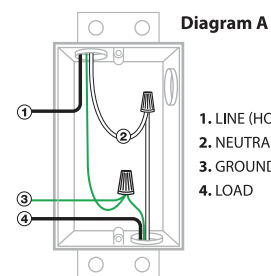
- 2a.** Open the outlet box and look for the neutral wire. If you do not have a neutral wire the dimmer will not work.

IF YOU'RE NOT SURE CONSULT A QUALIFIED ELECTRICIAN



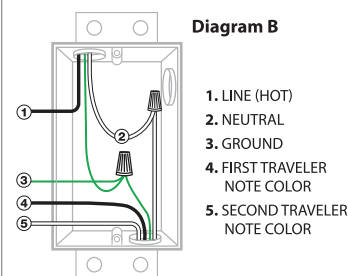
- 2b.** Determine if you have Single Pole or 3-Way wiring and label your wires. Review Diagram A and B below to find the closest match.

### SINGLE POLE



1. LINE (HOT)
2. NEUTRAL
3. GROUND
4. LOAD

### 3-WAY



1. LINE (HOT)
2. NEUTRAL
3. GROUND
4. FIRST TRAVELER  
NOTE COLOR
5. SECOND TRAVELER  
NOTE COLOR

- 2c.** LABEL YOUR WIRES:

1. Label the incoming 120V LINE (HOT) wire (usually black) with the black label AC-L
2. Label the green wire or bare wire GROUND with the green label G
3. Label the other wire (usually white) NEUTRAL with the white label AC-N
4. Label the other wire LOAD with the red label LOAD

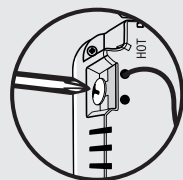
- 2d. DISCONNECT WIRES AND REMOVE THE OLD SWITCH**

### PREPARING AND CONNECTING WIRES

Use with #12 or #14 AWG solid copper wire or copper-clad wire. Strip wires to 0.80 inch.



Insert wires into terminal holes and secure connections by tightening terminal screws as shown.



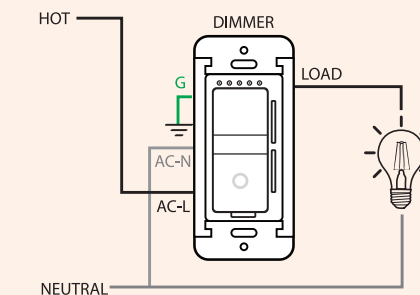
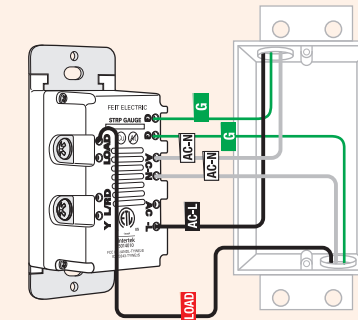
## 3 WIRE YOUR DIMMER

### 3a. SINGLE POLE One Smart Dimmer on a Circuit

#### MAKE THE WIRE CONNECTIONS

1. Insert the black wire labeled AC-L into the hole on the back of the dimmer marked AC-L and tighten the COPPER screw terminal until the wire is tightly held.
2. Insert the wire labeled LOAD into the hole on the back of the dimmer marked LOAD and tighten the BLACK screw terminal until the wire is tightly held.

3. Insert the incoming NEUTRAL (white) wire labeled AC-N into the hole on the back of the dimmer marked AC-N. Insert the other NEUTRAL (white) wire into the other hole marked AC-N. Tighten the SILVER screw terminal until the wires are tightly held. If you do not have this wire, this Smart Dimmer switch is not compatible.
4. Insert the GROUND wire labeled G into the hole on the back of the dimmer marked G and tighten the GREEN screw terminal until the wire is tightly held.



### 3b. 3-WAY One Smart Dimmer with a Switch on the Same Circuit

#### MAKE THE WIRE CONNECTIONS

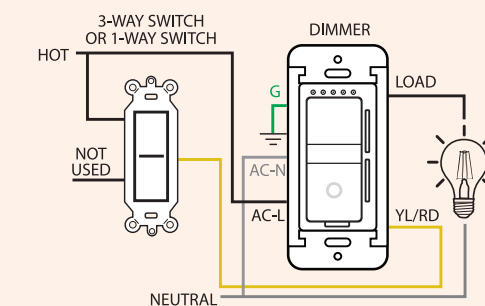
- For Switch in the location connected to the INCOMING 120V LINE:** THE SWITCH MUST BE INSTALLED IN THIS LOCATION.

1. Locate the wire marked AC-L. Connect it to the 3-way switch and the T1 TRAVELER as shown.
2. Locate the wire marked T2. Connect it to the 3-way switch as shown.
3. Connect the GROUND wires as shown. The ground wire may be bare copper or may be green color. Attach one GROUND wire to the switch and connect the other GROUND wires as shown.

IF YOU'RE NOT SURE CONSULT A QUALIFIED ELECTRICIAN

- For Smart Dimmer in the location connected to the LOAD (FIXTURE):** THE DIMMER MUST BE INSTALLED IN THIS LOCATION.

1. Insert the wire labeled LOAD into the hole in the back of the dimmer marked LOAD and tighten the BLACK screw terminal until the wire is tightly held.
2. Insert the wire marked T1 (possibly colored black), into the hole on the back of the dimmer marked AC-L as shown, and tighten the COPPER screw terminal until the wire is tightly held.
3. Take the wire marked T2 and insert it into the hole on the back of the dimmer marked YL/RD as shown, and tighten the BRASS screw terminal until the wires are tightly held.
4. Insert the two NEUTRAL (white) wires into the holes on the back of the dimmer marked AC-N as shown, and tighten the SILVER screw terminal until the wire is tightly held.
5. Connect the GROUND wire as shown. The GROUND wire may be bare copper or may be green color. Insert one GROUND wire into the hole on the back of the dimmer marked G and tighten the Green screw terminal until the wire is tightly held. Ensure the other GROUND wires are also connected as necessary.



**NOTE:**  
A normal 1-Way Switch can be used in this application.

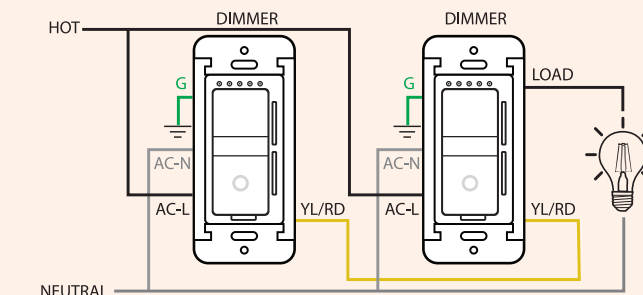
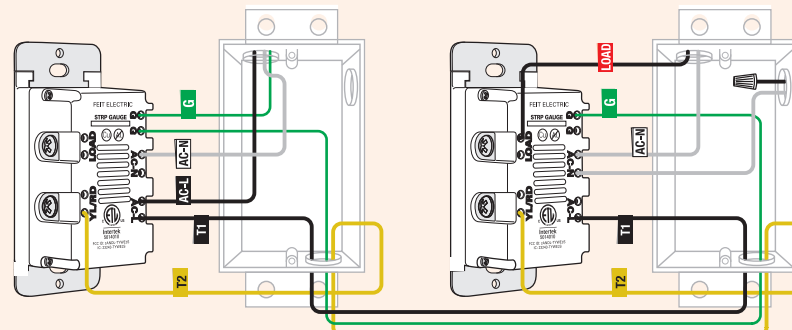
### 3c. 3-WAY Two Smart Dimmers on the Same Circuit

#### MAKE THE WIRE CONNECTIONS

- For Smart Dimmer in the location connected to the INCOMING 120V LINE:**

1. Locate the wire marked T1 (possibly colored black) and the wire marked AC-L. Insert these two wires into the holes on the back of the dimmer marked AC-L as shown, and tighten the COPPER screw terminal until the wires are tightly held.
2. Take wire marked T2 and insert it into the hole on the back of the dimmer marked YL/RD as shown, and tighten the BRASS screw terminal until the wires are tightly held.
3. Insert the NEUTRAL (white) wire into the hole on the back of the dimmer marked AC-N as shown, and tighten the SILVER screw terminal until the wire is tightly held.
4. Connect the GROUND wires as shown. The GROUND wire may be bare copper or may be green color. Insert one GROUND wire into the hole on the back of the dimmer marked G and tighten the GREEN screw terminal until the wire is tightly held. Ensure the other GROUND wires are also connected as shown.

IF YOU'RE NOT SURE CONSULT A QUALIFIED ELECTRICIAN



- For Smart Dimmer in the location connected to the LOAD (FIXTURE):**

1. Insert the wire marked T1 (possibly colored black), into the hole on the back of the dimmer marked AC-L as shown, and tighten the COPPER screw terminal until the wire is tightly held.
2. Take the wire marked T2 and insert it into the hole on the back of the dimmer marked YL/RD as shown, and tighten the BRASS screw terminal until the wires are tightly held.
3. Insert the two NEUTRAL (white) wires into the hole on the back of the dimmer marked AC-N as shown, and tighten the SILVER screw terminal until the wire is tightly held.
4. Connect the GROUND wire as shown. The GROUND wire may be bare copper or may be green color. Insert one ground wire into the hole on the back of the dimmer marked G and tighten the GREEN screw terminal until the wire is tightly held. Ensure the other GROUND wires are also connected as necessary.