

# ***LEVER ACTION BARREL PUMP***

Item Number W54268

## **OWNER'S MANUAL**



**Performance Tool®**

**▲WARNING:** READ, UNDERSTAND AND FOLLOW ALL INSTRUCTIONS AND WARNINGS BEFORE OPERATING THIS TOOL. FAILURE TO DO SO MAY RESULT IN PERSONAL INJURY AND/OR PROPERTY DAMAGE AND WILL VOID WARRANTY.

**PT®**  
Performance Tool

## FEATURES & BENEFITS

- Manual operation for quick, clean transferring of fuel or water based and acidic solutions.
- Dispenses approximately 9 ounces per stroke
- Designed for use with 5 gallon to 55 gallon containers
- 36 in. Telescopic suction tube adjusts to fit various barrels
- Steel lift rod and curved discharge spout

## SPECIFICATIONS

Pump Height.....	18 in.
Stroke Length.....	6 in.
Flow Rate.....	9 oz./Stroke
Hose Length.....	12 - 36 in.
Chemical Resistance.....	Viton Seals
Bing Adapter.....	1-1/4 & 2 in. Thread
Applicable Drum.....	35, 55 and some 15 Gal.
Applicable Pail.....	5 Gal.

### COMPATIBLE CHEMICALS

Nitric Acid 10% Solution	Ethyl - Ethanol
Nitric Acid 50% Solution	Ethylene Glycol
Nitric Acid 20% Solution	Isopropyl - Isopropanol
Phosphoric Acid 40% Solution	Glycerin
Sodium Bicarbonate 10%	Diesel Fuel
Ammonia Liquids	Diesel exhaust fluid
Blue Def	Diesel Exhaust Fluid
Ultra-pure Automotive Grade Urea 32.5%	

### NON RECOMMENDED CHEMICALS

Hydrochloric/Muriatic Acid 100%	Sulfuric Acid 10% - 75%
Hydrofluoric Acid 75%	Sulfuric Acid 75% - 100%
Hydrofluoric Acid 100%	

**Specifications are subject to change without notice.**

## SAFETY GUIDELINES / DEFINITIONS

*This instruction manual is intended for your benefit. Please read and follow the safety, installation, maintenance and troubleshooting steps described within to ensure your safety and satisfaction. The contents of this instruction manual are based upon the latest product information available at the time of publication. The manufacturer reserves the right to make product changes at any time without notice.*

**▲WARNING:** Read and understand this entire instruction manual before attempting to assemble, install, operate or maintain this product. Failure to comply with the instructions may result in serious personal injury and/or property damage!

**The following signal words are used to emphasize safety warnings that must be followed when using this product:**

**▲DANGER:** Indicates an imminently hazardous situation that, if not avoided, WILL result in death or serious injury.

**▲CAUTION:** Indicates a potentially hazardous situation that, if not avoided, MAY result in minor or moderate injury.

**▲WARNING:** Indicates a potentially hazardous situation that, if not avoided, COULD result in death or serious injury.

**▲NOTE:** Indicates important information, which if not followed, MAY cause damage to equipment.

## **IMPORTANT SAFETY INFORMATION**

**▲ WARNING: READ, UNDERSTAND AND FOLLOW ALL INSTRUCTIONS AND WARNINGS BEFORE OPERATING THIS TOOL. FAILURE TO DO SO MAY RESULT IN DEATH, PERSONAL INJURY AND/OR PROPERTY DAMAGE AND WILL VOID WARRANTY.**

**▲ WARNING: THE USER IS RESPONSIBLE FOR OPERATING THIS PUMP IN CONFORMANCE WITH O.S.H.A. GUIDELINES FOR DISPENSING AND TRANSFERRING HAZARDOUS, FLAMMABLE OR COMBUSTIBLE LIQUIDS.**

### **FOR THE PERSONAL SAFETY OF THE OPERATOR AND OTHERS WHO MAY COME INTO CONTACT WITH ANY PUMPS OF THIS NATURE AND FLAMMABLE LIQUIDS:**

- When pumping hazardous chemicals, wear a face shield, proper attire and approved respiratory equipment.
- Keep your work area clean and clear of clutter with sufficient lighting for proper visibility and in creased safety.
- Visitors and observers should remain at a safe distance from the area of work, unless the precautions above have been observed.
- The work area should be child-proof. Install padlocks, master switches and remove all starter keys for the safety of all children.

### **GENERAL SAFETY INFORMATION AND IMPORTANT GUIDELINES:**

- Always follow electrical and safety codes when using a hand pump.
- Information regarding NEC (National Electrical Codes) and NFPA (National Fire Protection Association) Codes can be obtained from the National Fire Protection Association, Inc., Battery march Park, Quincy, MA 02269, phone number 1-800-344-3555 or online at [www.nfpa.org](http://www.nfpa.org).
- Make sure pump containers are grounded when using with flammable liquids to avoid static electricity.
- Flush out pump prior to using. Processing lubricants could contaminate the fluid.
- Know the pump uses, limitations and all potential hazards before using this pump. Take note of all warning statements which indicate potentially dangerous situations for the operator, bystanders or equipment.

**▲ WARNING: THIS PUMP IS SUITABLE FOR MANY LIQUIDS, BUT NOT ALL LIQUIDS. KNOW YOUR PUMP AND THE LIQUIDS YOU WILL BE PUMPING THROUGH THE PUMP.**

- This pump should only be used with liquids compatible to the component material of the pump (See Specifications for component materials). The chemical supplier may be contacted with questions regarding chemical compatibility and the proper use and handling of the chemical.
- Misuse of this pump or use of incompatible liquids will void the warranty.
- Dispensing and/or transferring hazardous, flammable or combustible liquids should only be done in areas suitable for this purpose.

**▲ WARNING: WHEN FILLING DRUMS, CANS OR OTHER CONTAINERS WITH FLAMMABLE LIQUIDS, BOTH CONTAINERS SHOULD BE GROUNDED AND SECURELY FASTENED TO DISCHARGE STATIC ELECTRICITY AND MINIMIZE SPARKS CAUSED BY STATIC ELECTRICITY.**

- All warnings and instructions pertain not only to petroleum fuel, oils, kerosene, diesel fuel, lubricating oil & antifreeze (ethylene-glycol), but to any hazardous, flammable or combustible liquids.
- Only store hazardous, flammable or combustible liquids in a cool location. Keep stored hazardous, flammable or combustible liquids far from open flames or heat.
- Always keep hazardous, flammable or combustible liquids, other fuels and cleaners out of reach of children.
- A maintained fire extinguisher should be kept nearby when working with hazardous, flammable or combustible liquids.

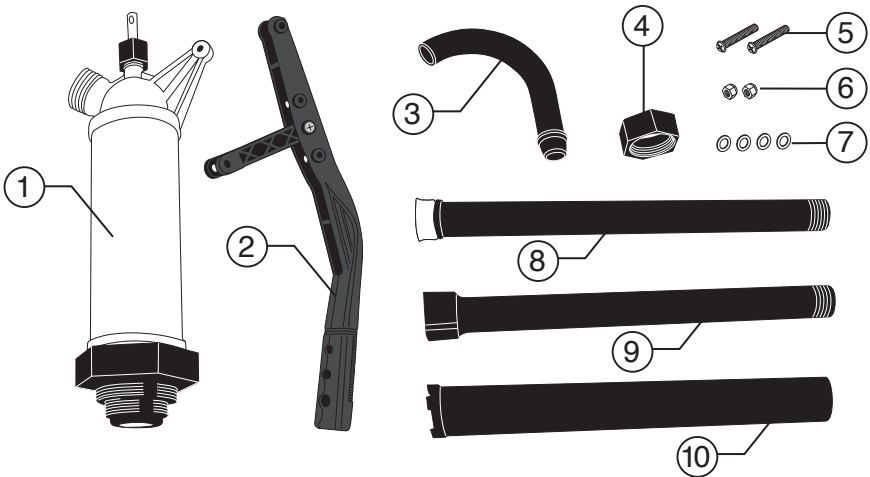
## IMPORTANT SAFETY INFORMATION

- Provide positive shut-off valves on all fixed fuel supplies. Fuel lines must be made of steel piping, leak-free and securely fastened.
- Adequate ventilation is essential! Clean up all spills immediately when pumping or handling flammable liquids.
- ABSOLUTELY NO SMOKING!
- DO NOT use torches or apply fire or flames to this pump, pump components or any containers used with this pump.
- Be sure that the discharge line is secure before pumping. An insecure discharge line may slide, possibly causing personal injury and/or damage to property.
- Over tightening non-metallic fittings will strip threads. Once fitting is “hand tight” turn one more full rotation, this is usually enough to prevent leaking. Thread sealant can be used on all threaded joints, including the delivery spout.
- Before each use, check hoses for weak or worn spots. Check the security of all connections.
- Occasionally inspect the pump and components, performing routine maintenance when required.
- Dispel all liquids from the pump and components before performing routine maintenance.

**▲ WARNING: AFTER USE, STORE ALL PUMPS USED FOR TRANSFERRING HAZARDOUS, FLAMMABLE OR COMBUSTIBLE LIQUIDS IN A WELL-VENTILATED AREA.**

## CONTENTS

No.	Description	Qty.	No.	Description	Qty.
1	Pump Body .....	1	6	Lock Nut .....	2
2	Handle.....	1	7	Washer.....	4
3	Discharge Spout .....	1	8	Suction Tube w/Strainer ...	1
4	Retainer Nut.....	1	9	Suction Tube Extension ....	1
5	Machine Screw .....	2	10	Base Suction Tube.....	1



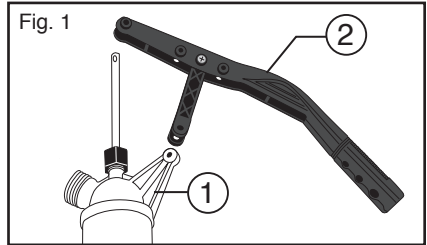
## TOOLS REQUIRED

1. Phillips screw driver
2. Adjustable wrench
3. PTFE Tape

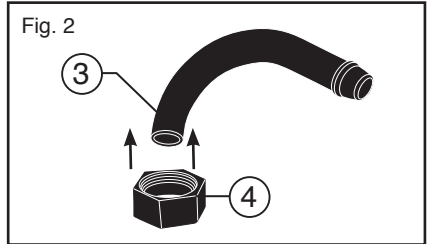
## ASSEMBLY INSTRUCTIONS

1. Read and understand instruction before beginning. Flush with water prior to use. Use PTFE tape on all plastic threaded joints.

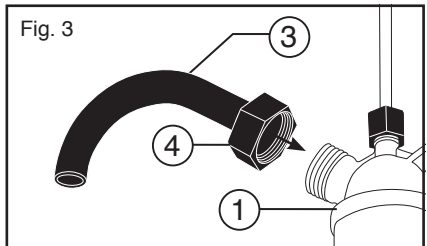
2. Connect the Handle (2) to the Pump Body (1) and lift rod with Machine screws (5), Lock Nuts (6) and Washers (7). See Fig. 1.



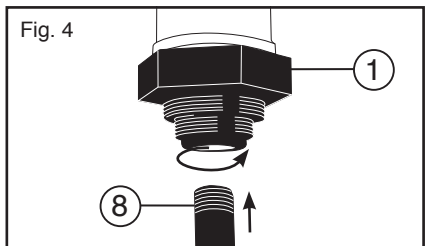
3. Slide Retainer Nut (4) onto Discharge Spout (3). See Fig. 2.



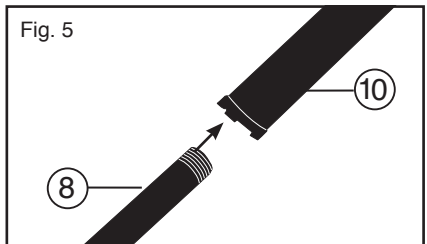
4. Attach Discharge Spout (3) onto Pump Body (1) using Retainer Nut (4). Make sure to use PTFE tape. See Fig. 3.



5. Attach Suction Tube with Strainer (8) to bottom of Pump Body (1). Make sure to use PTFE tape. See Fig. 4.



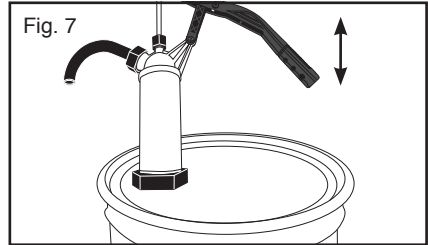
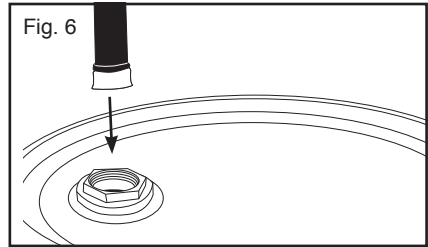
6. To attach 24 in. telescopic suction tube slide Suction Tube with Strainer (8) into Base Suction Tube (10) and attach Suction Tube with Strainer (8) into bottom of Pump Body (1). Make sure to use PTFE tape. See Fig. 5.



7. To attach 36 in. telescopic suction tube attach 24 in. suction tube from step 6 to Suction Extension Tube (9) and then attach Suction Extension Tube (9) to bottom of Pump Body (1). Make sure to use PTFE tape.

## OPERATION

1. Determine the proper length of suction tube for your application and attach to pump.
2. Insert suction tube through bung hole located on container lid and submerge into liquid to be transferred. See Fig. 6.
3. Attach bung nut located on the bottom of the Pump Body (1) to the container lid. See Fig. 7.
4. Pump the handle several times to prime the pump.
5. Continue pumping until the desired volume of solution is delivered.



## DEF (DIESEL EXHAUST FLUID)- USE

1. The overall purity of DEF is critical for the system to function properly. Before pumping DEF for filling the onboard systems, the pump needs to be flushed. This is done by dispensing DEF fluid into a portable container. This fluid should be disposed of in the proper manner in accordance with local regulations. "Do not return it to the drum or use it in a vehicle."
2. After pumping the desired amount of fluid, reverse the direction of rotation. This will return and dispense fluid still in the pump back into the barrel. This is required because fluid left in the pump will crystallize and cause the pump to malfunction. Crystallized DEF fluid would contaminate the next fluid dispensed.
3. If the pump has not been used for an extended length of time, or has had low usage the pump should be flushed and cleaned. This is critical when pumping DEF as it can harden and crystallize.

**Note: If you have used the pump for DEF, use it ONLY for DEF and no other materials. A sticker has been provided to label the pump once the unit has been used for DEF. Use de-ionized water to flush the pump.**

## **CARE AND MAINTENANCE**

A variety of chemicals, especially combinations of chemicals, are suitable for periodic use. They may affect the performance for the pump if left to dry. In these cases cleaning of the pump after each use is mandatory. Other chemicals may harden or cause the internal parts to swell. This prohibits the pumps operation and should be avoided unless cleaned after every use. If the pump has not been used for an extended length of time, or has had low usage the pump should be flushed and cleaned.

## **TROUBLESHOOTING**

### **PUMP IS NOT WORKING**

1. Check the suction tubes to be sure they are airtight. The pump will not pump if the suction tube allows air to enter. Thread sealing PTFE tape is recommended during assembly.
2. Lubricate the external moving parts with a multi-purpose lubricant.
3. Rinse pump with water or the appropriate solution in regards to what was just pumped. Some chemicals may harden or cause the internal parts to swell, this prohibits the pumps operation. You may need to open the pump body and clean the internal parts. While inside, visually review the vane for chemical permeation or swelling. If this has occurred replace the pump.

## 1 YEAR WARRANTY

PERFORMANCE TOOL® extends only the following warranties, and only to original retail purchasers. These warranties give specific legal rights. Except where prohibited by local law, the law of the State of Washington governs all warranties and all exclusions and limitations of warranties and remedies. There may be other rights which vary from state to state.

PERFORMANCE TOOL® warrants the product to be free from defects in materials and workmanship under normal use and service. A defective product may be returned for a free replacement within 90 days from the date of purchase, provided that product is returned to place of purchase immediately after discovery of defect. After 90 days and up to one year from date of purchase, PERFORMANCE TOOL® will replace at no charge any parts which our examination shall disclose to be defective and under warranty. These warranties shall be valid only when a sales receipt showing the date of purchase accompanies the defective product or defective part (s) being returned. For part (s) after 90 days, please remit your request, postage prepaid to:

PERFORMANCE TOOL, P.O. Box 88259 Tukwila, WA 98138

These warranties exclude blades, bits, punches, dies, bulbs, fuses, hoses, and other consumables which must be replaced under normal use and service. These warranties shall not apply to any product or part which is used for a purpose for which it is not designed, or which has been repaired or altered in any way so as to affect adversely its performance or reliability, nor shall these warranties apply to any product or part which has been subject to misuse, neglect, accident or wear and tear incident to normal use and service.

PERFORMANCE TOOL® does not authorize any other person to make any warranty or to assume any liability in connection with its products.

Except for warranties of title and the limited express warranties set forth above, PERFORMANCE TOOL® makes no express or implied warranties of any kind with respect to its products. In particular, PERFORMANCE TOOL® makes no implied warranty of merchantability and no implied warranty of fitness for any particular purpose, except that for goods purchased primarily for personal, family or household use and not for commercial or business use, PERFORMANCE TOOL® makes an implied warranty of merchantability (and, if otherwise applicable, an implied warranty of fitness for a particular purpose), but only for the particular qualities or characteristics, and for the duration, expressly warranted above.

The laws on limitation of implied warranties may differ from state to state, so the above limitations may not apply in all cases.

PERFORMANCE TOOL® shall not be liable for consequential, incidental or special damages resulting from or in any manner related to any product, or to the design, use, or any inability to use the product. The sole and exclusive remedy for a defective product or part shall be the repair, or replacement thereof as provided above. The laws on limitation of remedies or on consequential, incidental or special damages may vary from state to state, so the above limitations may not apply in all cases.