

PEX-A Pipe for Potable Water

Job Name	_____
Location	_____
Engineer	_____
Contractor	_____
Tag	_____ PO# _____

Specifications

With its superior, durable crosslinking pattern, Jones Stephens' PEX-A pipe is highly flexible. It creates less kinking and requires less fittings compared to alternate piping methods, making installation simple and saving the installer time and energy. PEX-A pipe expands to absorb the sound of water hammer – providing quiet operation. Manufactured to the highest industry standards, PEX-A pipe is freeze resistant, corrosion resistant, and energy efficient. Approved for use with F1960 cold expansion fittings and F1807 or F2159 crimp fittings.

Applications

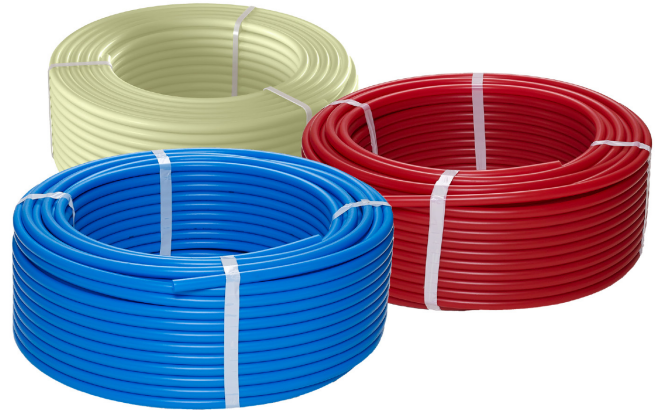
Jones Stephens' PEX-A Potable Water Pipe is approved for use with commercial and residential potable and non-potable water applications.

Materials

PEX-A pipe construction is crosslinked polyethylene (PEX 5106) manufactured using peroxide method in accordance to ASTM F876 and ASTM F877 and NSF standard 61.

Certifications/Listings/Approvals

- NSF certified to ASTM F876/877
- NSF/ANSI 14, 61 and 372
- ASTM E84
- ASTM F1960
- ASTM F2023
- CSA B137.5
- CAN/ULC S101/ULC S102.2
- AWWA C904
- ICC-ES certified to meet PMG-1559 standard



PRODUCT OFFERING ON PAGE 2

Dimensions and Product Offering

PART NO.	DESCRIPTION	OD	OD TOLERANCE	WALL THICKNESS	WALL THICKNESS TOLERANCE
F76781	1/2" x 20' Natural Pipe, 25 Straights	0.625"	±0.004"	0.070"	+0.010"
F76782	1/2" x 100' Natural Pipe, Coil	0.625"	±0.004"	0.070"	+0.010"
F76783	1/2" x 300' Natural Pipe, Coil	0.625"	±0.004"	0.070"	+0.010"
F76784	1/2" x 500' Natural Pipe, Coil	0.625"	±0.004"	0.070"	+0.010"
F76785	1/2" x 1000' Natural Pipe, Coil	0.625"	±0.004"	0.070"	+0.010"
F76786	3/4" x 20' Natural Pipe, 15 Straights	0.875"	±0.004"	0.097"	+0.010"
F76787	3/4" x 100' Natural Pipe, Coil	0.875"	±0.004"	0.097"	+0.010"
F76788	3/4" x 300' Natural Pipe, Coil	0.875"	±0.004"	0.097"	+0.010"
F76789	3/4" x 500' Natural Pipe, Coil	0.875"	±0.004"	0.097"	+0.010"
F76790	1" x 20' Natural Pipe, 10 Straights	1.125"	±0.005"	0.125"	+0.013"
F76791	1" x 100' Natural Pipe, Coil	1.125"	±0.005"	0.125"	+0.013"
F76792	1" x 300' Natural Pipe, Coil	1.125"	±0.005"	0.125"	+0.013"
F76793	1" x 500' Natural Pipe, Coil	1.125"	±0.005"	0.125"	+0.013"
F76074	1-1/4" x 20' Natural Pipe, 5 Straights	1.375"	±0.005"	0.153"	+0.015"
F76077	1-1/4" x 100' Natural Pipe, Coil	1.375"	±0.005"	0.153"	+0.015"
F76080	1-1/4" x 300' Natural Pipe, Coil	1.375"	±0.005"	0.153"	+0.015"
F76075	1-1/2" x 20' Natural Pipe, 5 Straights	1.625"	±0.006"	0.181"	+0.019"
F76078	1-1/2" x 100' Natural Pipe, Coil	1.625"	±0.006"	0.181"	+0.019"
F76081	1-1/2" x 300' Natural Pipe, Coil	1.625"	±0.006"	0.181"	+0.019"
F76076	2" x 20' Natural Pipe, 5 Straights	2.125"	±0.006"	0.236"	+0.024"
F76079	2" x 100' Natural Pipe, Coil	2.125"	±0.006"	0.236"	+0.024"
F76082	2" x 300' Natural Pipe, Coil	2.125"	±0.006"	0.236"	+0.024"
F76794	1/2" x 20' Red Pipe, 25 Straights	0.625"	±0.004"	0.070"	+0.010"
F76795	1/2" x 100' Red Pipe, Coil	0.625"	±0.004"	0.070"	+0.010"
F76796	1/2" x 300' Red Pipe, Coil	0.625"	±0.004"	0.070"	+0.010"
F76797	1/2" x 1000' Red Pipe, Coil	0.625"	±0.004"	0.070"	+0.010"
F76798	3/4" x 20' Red Pipe, 15 Straights	0.875"	±0.004"	0.097"	+0.010"
F76799	3/4" x 100' Red Pipe, Coil	0.875"	±0.004"	0.097"	+0.010"
F76800	3/4" x 300' Red Pipe, Coil	0.875"	±0.004"	0.097"	+0.010"
F76801	3/4" x 500' Red Pipe, Coil	0.875"	±0.004"	0.097"	+0.010"
F76802	1" x 20' Red Pipe, 10 Straights	1.125"	±0.005"	0.125"	0.013
F76803	1" x 100' Red Pipe, Coil	1.125"	±0.005"	0.125"	+0.013"
F76804	1" x 300' Red Pipe, Coil	1.125"	±0.005"	0.125"	+0.013"

Dimensions and Product Offering

PART NO.	DESCRIPTION	OD	OD TOLERANCE	WALL THICKNESS	WALL THICKNESS TOLERANCE
F76805	1/2" x 20' Blue Pipe, 25 Straights	0.625"	±0.004"	0.070"	+0.010"
F76806	1/2" x 100' Blue Pipe, Coil	0.625"	±0.004"	0.070"	+0.010"
F76807	1/2" x 300' Blue Pipe, Coil	0.625"	±0.004"	0.070"	+0.010"
F76808	1/2" x 1000' Blue Pipe, Coil	0.625"	±0.004"	0.070"	+0.010"
F76809	3/4" x 20' Blue Pipe, 15 Straights	0.875"	±0.004"	0.097"	+0.010"
F76810	3/4" x 100' Blue Pipe, Coil	0.875"	±0.004"	0.097"	+0.010"
F76811	3/4" x 300' Blue Pipe, Coil	0.875"	±0.004"	0.097"	+0.010"
F76812	3/4" x 500' Blue Pipe, Coil	0.875"	±0.004"	0.097"	+0.010"
F76813	1" x 20' Blue Pipe, 10 Straights	1.125"	±0.005"	0.125"	+0.013"
F76814	1" x 100' Blue Pipe, Coil	1.125"	±0.005"	0.125"	+0.013"
F76815	1" x 300' Blue Pipe, Coil	1.125"	±0.005"	0.125"	+0.013"
F76816	1" x 500' Blue Pipe, Coil	1.125"	±0.005"	0.125"	+0.013"