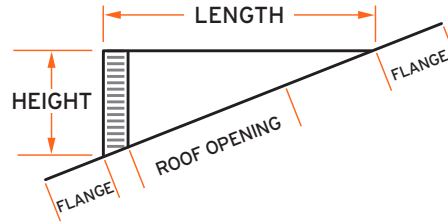
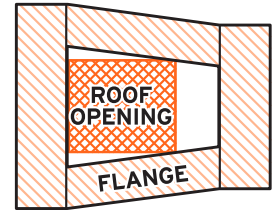


FRONT



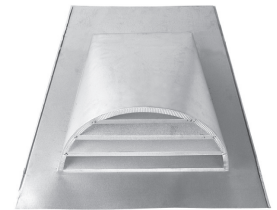
SIDE



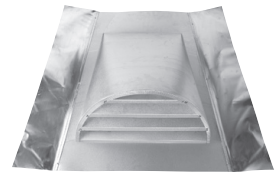
TOP

DORMER VENTS - 1/8th inch screen

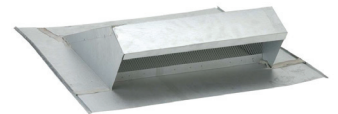
PART#	DESCRIPTION	HEIGHT	WIDTH	ROUGH OPENING	N.F.V.
BH24-0.125	12 x 24 Square Tail	12"	24"	12" x 9"	100 sq. in.
LPDG19-0.125	19" Low Profile	4"	19"	19" x 10"	43 sq. in.
LPDH18-0.125	18" Low Profile	7"	18"	18" x 10"	81 sq. in.
LPSD20-0.125	20" Low Profile (Simpson)	2.75"	20"	19" x 10"	48 sq. in.
STDS24-2B-0.125	12 x 24 Soft Aluminum - 2 Sides	12"	24"	12" x 9"	100 sq. in.



BH24-0.125



STDS24-2B-0.125



LPDG19-0.125

SUB BASES

PART#	DESCRIPTION	HEIGHT	WIDTH	ROUGH OPENING	N.F.V.
3SBF1010S	18" Sub-Base - with screen	n/a	16.5"	12" x 9"	110 sq. in.
STD18SJ	18" Sub-Base - no screen	n/a	16.5"	10.5" x 10.5"	110 sq. in.
3SBF1414S	24" Sub-Base - with screen	n/a	22.5"	14" x 14"	196 sq. in.
STD24SJ	24" Sub-Base - no screen	n/a	22.5"	14" x 14"	196 sq. in.

STANDARD MATERIALS

ASTM A653/A653M - G90 hot dipped galvanized steel, 28GA and 26GA.
ASTM D9092 - mill phosphatized coating for painting.
.125 x .125 hot dipped galvanized wire screen.

CODE

Conforms to Federal Spec. QQ-5775A, Type 1, Class 4 ASTM A-527.
Meets FHA codes.

INSTALLATION GUIDELINES

Before installation, ensure that the substrate is uniform and even. Do not install venting products on uneven substrate. Installation shall be made in accordance with recognized sheet metal practices. SMACNA Architectural Sheet Metal Manual 6th Edition specifications shall be used as a guide and basis for detail whenever applicable. Gibraltar Building Products ventilation products can be nailed or riveted using conventional hand or power tools. Flashings shall be properly fastened to the substrate by means of wood or metal screws. When fastening dissimilar metals the use of stainless steel is recommended. Use of neoprene washers or similar gasketing material is acceptable.

NOTE: Recommended use of this product is for exhaust of warm dry or slightly moist air only. This product is not intended for venting or exhaust grease or liquid.