

## VP6030CTSM

60 x 30 x 79



PROFESSIONAL

### FEATURES

- Modern, matte finish
- Smooth, 4-piece kit
- Easy Wedge & Lock installation
- Caulkless installation
- Integral soap shelves
- Available in White only
- 15 Year residential limited warranty

### COMPONENTS OF KIT

#### Above Floor Rough (AFR)

- VP6030CTMML (Tub) or VP6030CTMMR (Tub)
- VP6062CBW (Back Wall)
- VP2462CSW (Side Walls)

#### Aging in Place (AIP)

- VP6030CTMML (Tub) or VP6030CTMMR (Tub)
- VP6062CBWA (Back Wall)
- VP2462CSWA (Side Walls)

### PACKAGED DIMENSIONS

- Tub: 62 1/2 x 34 x 21 1/4
- Back Wall: 65 x 61 1/2 x 8 1/2
- Side Wall Set: 64 x 26 1/2 x 5 1/4

### VERITEK PRO

Lightweight and durable, Veritek Pro is produced with Swan Solid Surface, a proprietary SMC compound.

Veritek Pro is the better bathroom solution and is a snap to install!

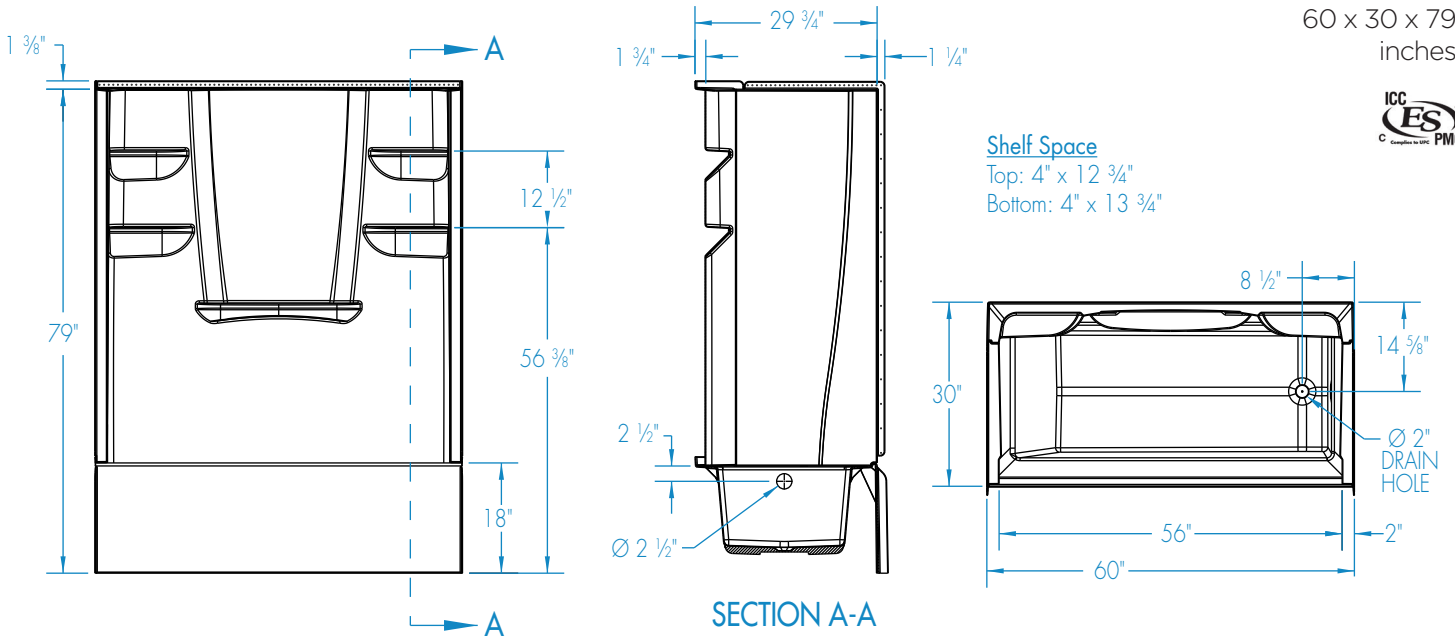
Available in the Following Offerings:

Depth	Width	Height Standard	Height AFR	Model Number			
				Standard	AIP	AFR	AIP & AFR
30	60	76	79	VP6030CTSMINL/R	VP6030CTSMINAL/R	VP6030CTSMML/R	VP6030CTSMML/R

- **Standard:** Base model shower, tub, or tub shower offering
- **Aging In Place (AIP):** Reinforced shower or tub shower walls that allows for future grab bar installation
- **Above Floor Rough (AFR):** Clearance for drain placement, eliminating the need for drain relocation
- **Aging In Place (AIP) & Above Floor Rough (AFR):** A combination kit for AFR & AIP



# VP6030CTSM

 60 x 30 x 79  
inches


**FEATURES** Dimensional Tolerance  $\pm 3/8"$ . Dimensions needed for site preparation should be measured from the unit. Manufacturer assumes no responsibility for preparatory work.

Type	Model #	Material	Height	Drain	Net Wt. lbs	Pkg. Wt. lbs
AFR Tub-Shower	VP6030CTSMML/R	Swan Solid Surface	79	LH or RH	143	161
AIP and AFR Tub-Shower	VP6030CTSMML/R	Swan Solid Surface	79	LH or RH	173	191

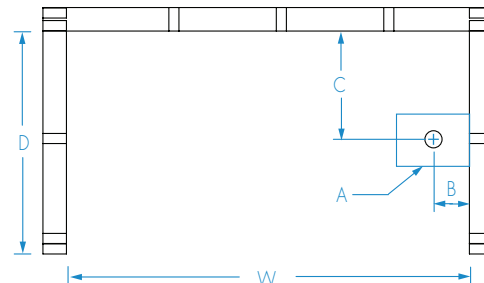
## DIMENSIONS

Specifications	inches
<b>Width:</b> Overall / Net	60
<b>Depth:</b> Overall / Net	31 1/2 / 30
<b>Height:</b> Overall / Net	80 3/8 / 79
<b>Enclosure Opening</b>	56
<b>Skirt Height</b>	18
<b>Drain Rough-In</b> (from Back Wall)	14 5/8
<b>Drain Rough-In</b> (from Side Wall)	2 3/4
<b>Drain:</b> Diameter / Clearance	2 / 3 1/2

## FRAMING DIMENSIONS

 inches

Type	D Depth	W Width	H Height	A	B	C
Alcove	31 1/2	60	77 3/8	Box Out	2 3/4	14 5/8



## SUMP DATA

Top of Drain to Bottom of Overflow	Capacity to Overflow gal	WIDTH @ centerline		DEPTH @ centerline	
		Top	Bottom	Top	Bottom
9 1/2	36 1/10	51 5/8	44 1/2	21 5/8	19 5/8

