

User's Manual

748UAI
MP3- COMPATIBLE
IN-DASH CD RECEIVER
WITH FULL IPOD/IPHONE CONTROL
WITH USB AND SD MEMORY CARD PORTS
AND FRONT PANEL AUX INPUT



748UAI
MP3- COMPATIBLE IN-DASH CD RECEIVER
WITH FULL IPOD/IPHONE CONTROL
WITH USB AND SD MEMORY CARD PORTS
AND FRONT PANEL AUX INPUT

01.2012

iPod is a trademark of Apple Computer, Inc., registered in the U.S. and other countries.

tech support: www.bosssaudio.com/support



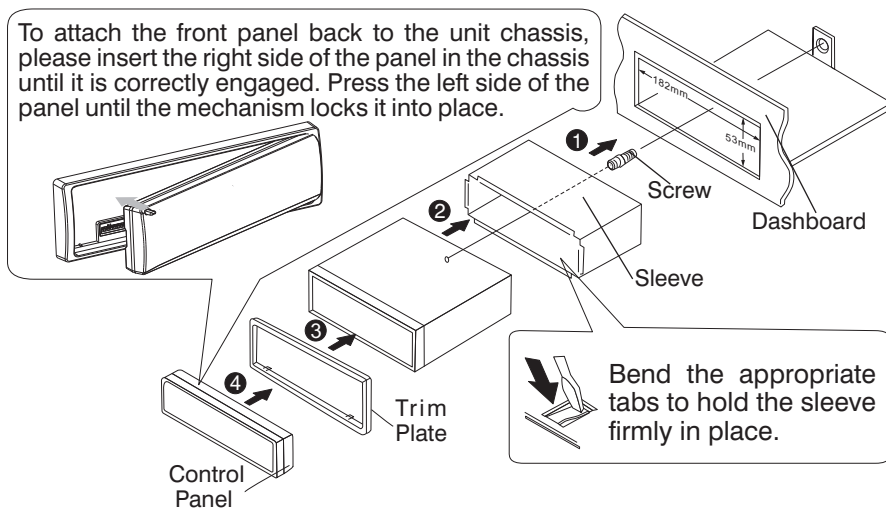
BOSS[®]
AUDIO SYSTEMS

BOSS Audio Systems • 3451 Lunar Court • Oxnard, CA 93030
www.bosssaudio.com
800.999.1236

BOSS[®]
AUDIO SYSTEMS

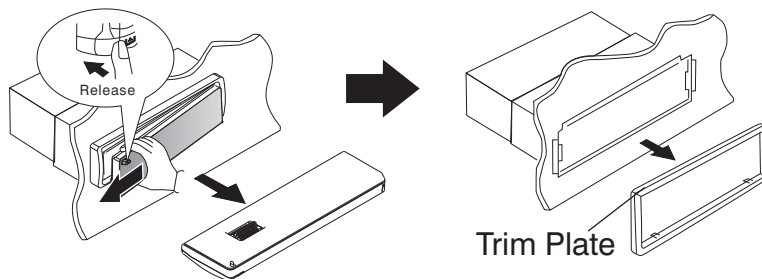
1. INSTALLATION

The following illustration shows a typical installation. If you have any questions or require information regarding installation kits, consult your customer car audio dealer or a company supplying kits. If you are not sure how to install this unit correctly, have it installed by a qualified technician.



Remove the unit

1. Press the Panel Release button.
2. Push the left side of the panel rightward
3. Pull the panel towards you to disengage it from the chassis.



2. CONNECTING THE SYSTEM

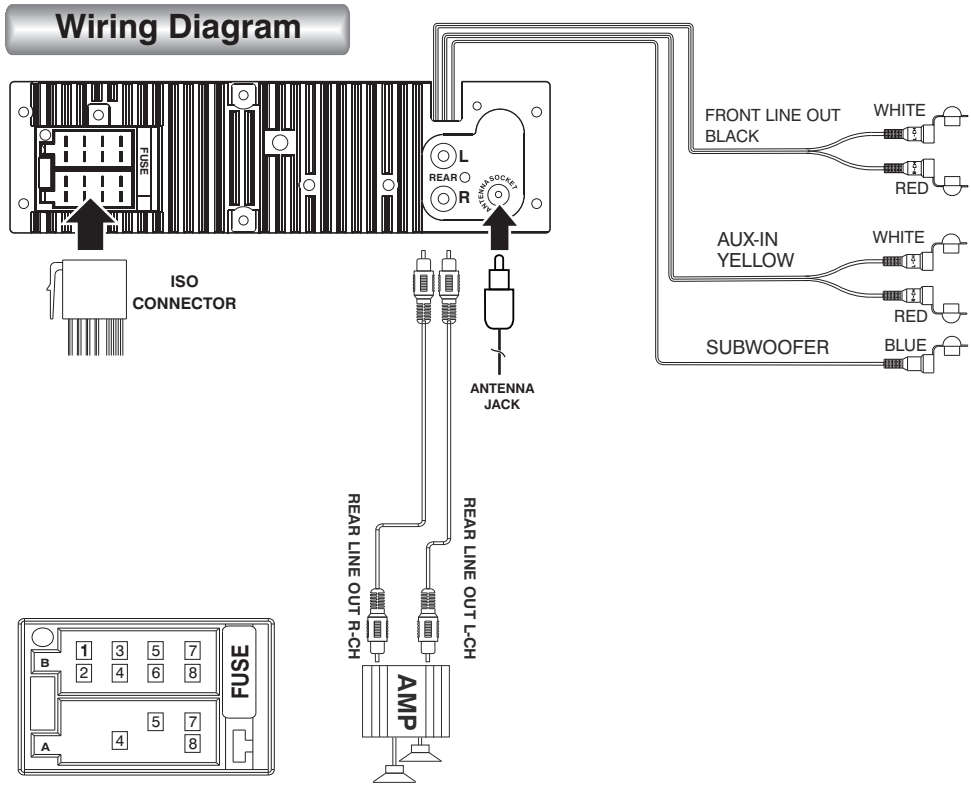
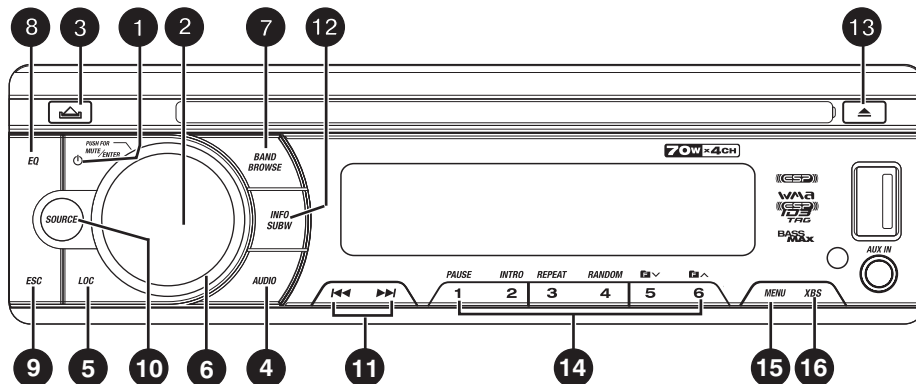


Figure 2

ISO CONNECTOR WIRING CHART

PIN	WIRE COLOR	FUNCTION/LABEL
A4	YELLOW	BATTERY(+)
A5	BLUE	CONNECT TO SYSTEM CONTROL TERMINAL OF THE POWER AMP OR AUTO ANTENNA RELAY CONTROL TERMINAL(max 150mA 12VDC)
A7	RED	IGNITION(ACC)
A8	BLACK	GROUND
B1	VIOLET	RIGHT REAR SPEAKER (+)
B2	VIOLET/BLACK	RIGHT REAR SPEAKER (-)
B3	GREY	RIGHT FRONT SPEAKER (+)
B4	GREY/BLACK	RIGHT FRONT SPEAKER (-)
B5	WHITE	LEFT FRONT SPEAKER (+)
B6	WHITE/BLACK	LEFT FRONT SPEAKER (-)
B7	GREEN	LEFT REAR SPEAKER (+)
B8	GREEN/BLACK	LEFT REAR SPEAKER ()

3. THE MAJOR FUNCTION OF THIS UNIT



No.	Item	Decriptions
1	(Power)	▶ Press this button or any other button on the front panel (except Release/Eject) to turn the unit on. Press this button again to turn the unit off.
2	MUTE ENTER	▶ Press this button to turn the Mute On/Off. ▶ Under Media playback mode, press this button to confirm the selection.
3	(Release)	▶ Press this button to open the control panel.
4	AUDIO(Audio Menu)	▶ Press to access into the Audio Menu mode to adjust the below options: BASS(Bass Level) / TRE (Treble Level) / BAL (Balance) / FAD (Fader) / EQ(Preset Equalizer) /xBAS(iX-Bass)
5	LOC(Local/Distance)	▶ Press this button adjust the tuner sensitivity if you want to receive more radio stations or only stations with strong signal. [LOCAL]: only stations with strong signal can be received. [DISTANCE]: Stations with strong and weak signals can be received.
6	VOLUME KNOB	▶ Rotate the encoder volume to increase and decrease the volume.
7	BAND BROWSE	▶ Short press this button to change between BAND FM1,FM2,FM3, AM1 (MW1) or AM2 (MW2). ▶ Under Media playback mode, press to access into the music folder / file searching mode. ▶ Under iPhone / iPod mode, press this button to access into the Playlist, Artist, etc searching mode.

8	EQ	▶ Press to select the preset equalizer setting : EQ OFF -> POP -> USER -> TECHNO -> ROCK -> CLASSIC -> JAZZ -> VOCAL														
9	ESC	▶ Press to quick return previous menu or mode.														
10	SOURCE	▶ Press SOURCE button to select a different mode of playback mode: Radio, CD play,USB(USB iPod), SD and Aux In .														
	TUNE UP /DOWN	▶ Under Radio mode, press these buttons to enter into the Auto Seek mode, press and hold these buttons to enter into the Manual Seek mode.														
11	FILE UP /DOWN	▶ Under Media playback mode, press these buttons to skip a chapter / track / scene / file.														
	FAST FORWARD /BACKWARD	▶ Under Media playback mode, press and hold momentarily to fast forward /backward.														
12	INFO	▶ Under Tuner mode, press this button briefly to display the Clock time. ▶ Under Media playback mode, press this button repeatedly to display ID3 information: Track number and play time ->folder ->file ->title ->artist ->album -> c l o c k .														
	SUBW(Subwoofer)	▶ Press and hold this button to turn On or Off the Subwoofer function.														
13	EJECT	▶ Press this button to eject the Disc.														
14	PRESET NUMERIC BUTTONS	▶ Under Tuner mode, short press the Numeric buttons to recall the preset stations. Hold press the Numeric buttons to store the listening station. ▶ Under Media playback mode,press the Numeric buttons to perform the below operation :														
		<table border="1"> <thead> <tr> <th>Number</th> <th>1</th> <th>2</th> <th>3</th> <th>4</th> <th>5</th> <th>6</th> </tr> </thead> <tbody> <tr> <td>Button</td> <td>Pause/Play</td> <td>INT</td> <td>RPT</td> <td>RDM</td> <td>Folder Down</td> <td>Folder UP</td> </tr> </tbody> </table>	Number	1	2	3	4	5	6	Button	Pause/Play	INT	RPT	RDM	Folder Down	Folder UP
Number	1	2	3	4	5	6										
Button	Pause/Play	INT	RPT	RDM	Folder Down	Folder UP										
15	MENU	▶ Press to access into the System Menu mode. ▶ Under iPod/iPhone mode, press to access into the iPod/iPhone control mode.														
16	XBS	▶ Press this button to turn On or Off the iX-BASS booster function.														

4. ADJUST SYSTEM MENU SETTING

Press **MENU** to access into the System Menu. Press **MENU** repeatedly to select the item to be adjusted, then rotate Encoder Volume Knob to select a value / option.

▶ **AUTO STORE**

Under the Tuner mode, press the **ENTER** button to access into the Auto Store mode. The six strongest stations of the selected band are saved in preset channel automatically: FM1, FM2, FM3(1-6), AM1, AM2.

▶ **AREA (Tuner Frequency Spacing)**

This option allows the selection of the frequency spacing appropriate for your area. Rotate the Encoder Volume Knob to select the USA, LATIN, EUROPE, RUSSIA, ASIA (Asia Pacific), MID-EAST (Middle East) or JAPAN options.

▶ **CLOCK SET**

Program the current time by rotating the Encoder Volume Knob clockwise to adjust the minutes and hours.

▶ **CLOCK FORMAT**

User can rotate the Encoder Volume Knob to select the clock format 12H or 24H

▶ **BEEP ON/OFF (Beep Tone)**

The beep tone feature allows the selection of an audible beep tone to be heard each time a button is pressed on the face of the radio. "Beep On" is the default display. Rotate Encoder Volume Knob to select the "Beep Off" option.

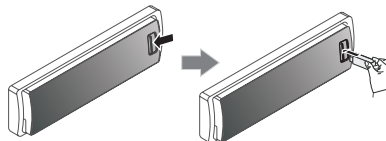
5. EXTERNAL CONNECTION AND MEDIA PLAYER

MP3 music files are audio compression format. This unit can play MP3 directly from files contained on a USB Memory Stick, SD Card.

USB DEVICE OPERATION

▶ Insert the USB Device

1. Open the cover marked USB icon on the front panel.
2. Insert the USB device into the USB socket. The unit starts playing from the USB device automatically.



NOTE


Ensure that the USB device contains playable music.

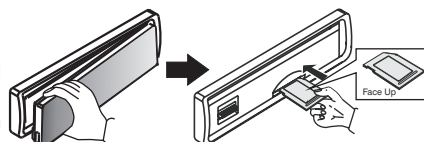
▶ Remove the USB Device

Before remove the USB stick from the front panel. Always remember to switch off the unit's power then remove out the USB Stick.

MEMORY CARD OPERATION

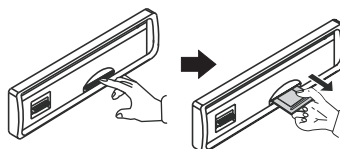
▶ Insert the Memory Card

1. Press panel  button to release the front panel.
2. Push the left side of the panel rightward. Pull the panel towards you to disengage it from the chassis.
3. Insert the card into the card slot in the correct direction until a "CLICK" sound is heard,
4. Close the front panel, then the unit starts playing from the card automatically.



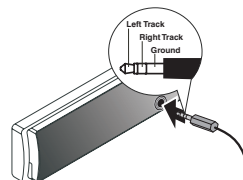
▶ Remove Memory Card

Press the unit in off. Press the card until you hear a click sound, the card is now disengaged. then remove the card.



CONNECT THE AUX-IN

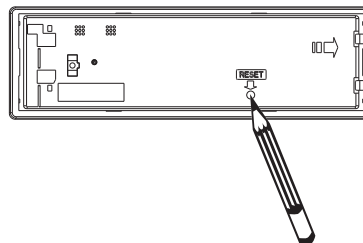
Connect the external signal to AUX in jack located at the front of the panel, then press Mode button to select Aux mode. Press Mode Button again to cancel Aux Mode and return to previous mode.



RESET THE UNIT

You can reset the unit to its default setting.

- The RESET button is located on the main unit (as shown on the diagram). To press it vertically with a ballpoint pen or metal object will activate it.
- The reset button is to be activated for the following reasons:
 1. Initial installation of the unit when all wiring is completed.
 2. All the function buttons do not operate.
 3. Error symbol on the display.



6. iPod / iPhone OPERATION

This unit is equipped with iPod/iPhone Ready function which allow end user to have direct control of the iPod/iPhone on the front panel control button and display iPod/iPhone song information on the unit's LCD display. Please read below for more details operation.

► Compatible iPod/iPhone

Apple iPod and iPhone models with a 30-pin dock connector:

- iPod nano (2nd generation)
- iPod nano (3rd generation, 4GB only)
- iPod nano (3rd generation, 8GB only)
- iPod nano (4th generation)
- iPod nano (5th generation)
- iPod classic (1st generation)
- iPod classic (2nd generation)
- iPod touch (1st generation)
- iPod touch (2nd generation)
- iPod touch (3rd generation)
- iPod video (30GB, 80GB only)
- iPhone
- iPhone 3G
- iPhone 3GS
- iPhone 4

► iPod/iPhone control music playback mode

Press **MENU** on front panel repeatedly the **[IPOD CONTROL]** is displayed, then press **ENTER** to switch between the two control modes:

- **iPod control mode:** Use the iPod/iPhone to operates music control.
- **Panel control mode:** Use the Panel buttons on unit to operates the music control.

NOTE

Please make sure the iPod/iPhone cable is connected correctly. And please only use original iPod / iPhone cable(iPhone, iPod & cable not supplied with this unit.).

► Audiobook

In iPod/iPhone mode, you can set the audiobook playback speed on this car audio.

Press **MENU** on front panel repeatedly the **[AUDIOBOOK]** is displayed, then rotate Encoder Volume Knob to select setting:

NORMAL / FASTER / SLOWER

► Search for a track on iPod/iPhone

1. Press **BAND/Q** to browse iPod/iPhone menu.
2. Rotate Encoder Volume knob to select the Artist search mode, and press **ENTER** to confirm.
3. Rotate Encoder Volume knob to select the Artist, then press **ENTER** to confirm.
4. Rotate Encoder Volume knob to select desired song in the current album, press **ENTER** to confirm.

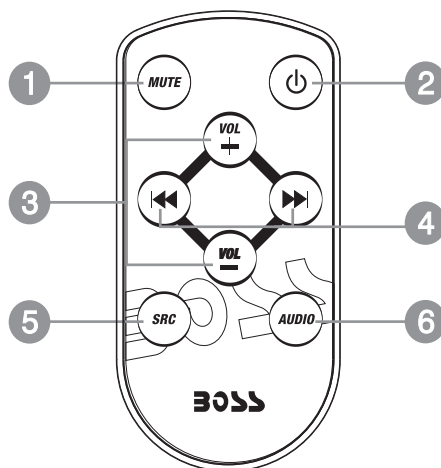
► Connect iPod / iPhone

Insert the iPod/iPhone USB cable to the Front Panel USB socket, the unit starts playing



iPod/iPhone USB cable
(not supplied with this unit)

7. THE FUNCTIONS OF REMOTE CONTROL



No.	Button	Item	Descriptions
1	MUTE	MUTE	▶ Press this button to turn the mute On / Off.
2	ⓘ	POWER ON/OFF	▶ When the unit is power on, press this button to turn Off the unit. Once the unit power off, press this button to turn On the unit.
3	VOL + / VOL -	VOLUME KNOB	▶ Press this button to increase / decrease the volume.
4	⏪ ⏩	TUNE UP /DOWN	▶ Under the tuner mode, press this button to enter into the Auto seek mode, press and hold this button to enter into the Manual Seek mode.
		FASTFORWARD /BACKWARD	▶ Under USB/SD media playback mode, press and hold momentarily to fast forward / backward.
5	SRC	SOURCE	▶ Press this button to select different source playback mode: TUNER,USB, SD and AUX IN.
6	AUDIO	AUDIO MENU	▶ Press this button to enter into the Audio Menu mode.

8. TROUBLE SHOOTING

Before going through the check list, check wiring connection. If any of the problems persist after check list has been made, consult your nearest service dealer.

No power or no sound

- Car engine is not on. Turn the car engine on.
- Cable is not correctly connected. Check connections.
- Fuse is burnt. Replace fuse.
- Volume is in minimum. Adjust volume to a desired level.
- If the above solutions cannot help, press the RESET button.
- Ensure that the track played is of a compatible format.

Noise in broadcasts

- Signals are too weak. Select other stations with stronger signals.
- Check the connection of the car antenna.
- Change broadcast from Stereo to mono.

Cannot play disc

- Ensure that the disc label is inserted with the printed side facing up.
- Wipe the disc with fibre cleaning cloth from the centre to the edge in a straight line.
- This disc may be defective. Play another disc.
- Ensure that the CD is a finalised CD/CD-R/CD-RW.
- Ensure that the CD is not encoded with copyright protection technologies.

The CD Skips tracks

- Ensure that the CD is not damaged or dirty.
- Ensure that random mode is deactivated.

Preset stations lost

- Battery cable is not correctly connected. Connect the battery cable to the terminal that is always live.

Display show ERR-1

- The disc, USB or SD device cannot be read in two minutes

Display show ERR-3

- USB/SD data error.
- Disc is upside down. Ensure the printed side is facing up.

Display show ERR-5

- Communication error or component is damaged.

9. PRODUCT INFORMATION

Power Supply	12 V DC (11-14 V), Negative Ground
Fuse	15A
Suitable Speaker Impedance	4 - 8Ω
Power output	70W x 4 channels
Pre-AMP output voltage	2.0 V (USB play mode; 1KHZ, 0dB, 10kΩ load)
Aux-In level	≥ 300mV

Radio

-FM	
Frequency Range	87.5 - 107.9MHz(American) 87.5 - 108MHz(Europe) (100KHz per step in auto search and 50KHz per step in manual search)
Usable Sensitivity	Better than 15dB at S/N 30dB
-AM(MW)	
Frequency Range	530 - 1710 KHz(American) 522 - 1620KHz(Europe)
Usable Sensitivity	Better than 45dB

USB devices:

USB flash memory	USB 1.1, & 2.0 compatible
------------------	---------------------------

Supported formats:

MPEG1/2/2.5/	Layer 2/3
WMA Version	7/8/9
Sampling frequency	
MPEG1	32/44.1/48 Khz
MPEG2	16/22.05/24 KHz
MPEG2.5	8/11.025/12KHz
WMA	22/32/44/48KHz
Sampling But rate	
MP3/WMA	32~320Kbps & VBR
CDROM Mode	1 / 2
ISO9660 Level	1 / 2 & Joliet(unicode)
Max File/DIR. Count	999
Max DIR. Depth	255
Sorting Method	Tree sorting
Max File/DIR. Name	64Byte
ID3	V1.0/1.1/2.0/2.3(Max 32Byte)
MP3 directory shown	in this manual as "Directory"
MP3 file shown	"Track".
Maximum length of file name	31 characters.
Maximum length of directory	32 characters.
Supports Multi-Session recording.	
Supports CD, CDR and CDRW.	
Disc written by Packet Write (UDF) is not supported.	

NOTE

Product information is subject to change without prior notice.



If at any time in the future you should need to dispose of this product please note that Waste electrical products should not be disposed of with household waste. Please recycle where facilities exist. Check with your Local Authority or retailer for recycling advice.(Waste Electrical and Electronic Equipment Directive)