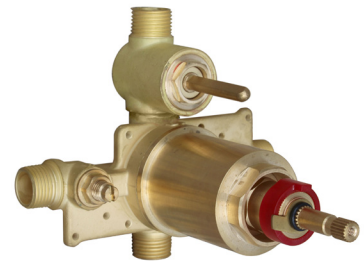


SPEAKMAN® SM-544O

SentinelPro™ Thermostatic/Pressure Balance Shower System

FEATURES:

- SentinelPro shower system includes SentinelPro concealed anti-scald thermostatic/pressure balance shower/bath valve combinations with integral volume control.
- Chrome plated Brass wall plate with metal index.
- Chrome plated metal lever handle.
- Adjustable temperature limit stop (TLS). Factory set @ 110 F°.
- Brass body with integral spring check stops.
- Dual function thermostatic/pressure balance cartridge.
- Can be installed back-to-back. Includes rough-in template.
- Four port valve with ½ in. female Copper sweat and ½ in. NPT male inlets and outlets.
- Furnished with ½ in. cap.
- Chrome plated Brass supply ell with wall flange.
- 69 in. square lock stainless steel hose with rubber liner.
- Swivel connector. In-line vacuum breaker.
- 30 in. chrome plated Brass slide bar with mounting screws.
- VS-100-PC handshower with flow control device reduces flow to 2.5 gpm (9.5 L/min) maximum.
- Valve construction is Forged Brass Body and Brass Bonnet.
- Maximum capacity is 4.3 gpm +/- .2 @ 45 psi.
- Maximum Hot Water Supply Temperature is 185°F.
- Minimum Hot Water Supply Temperature is 5°F above set point.
- Maximum operating temperature is 120°F.
- Valve Temperature Set Point is 110°F (Based on 115-120°F hot & 55-65°F Cold).
- Maximum Static Pressure is 125 psi.
- Minimum flow (for +/-3°F performance) meets ASSE 1016 to 1.5 gpm (5.7 L/min).



FINISH:



PC

COMPLIANCE:

- ASSE 1016 & ASME 112.18.1/CSA B125.1 standards (SM-5400 Combo)

OPTIONS:

Add suffix to model #

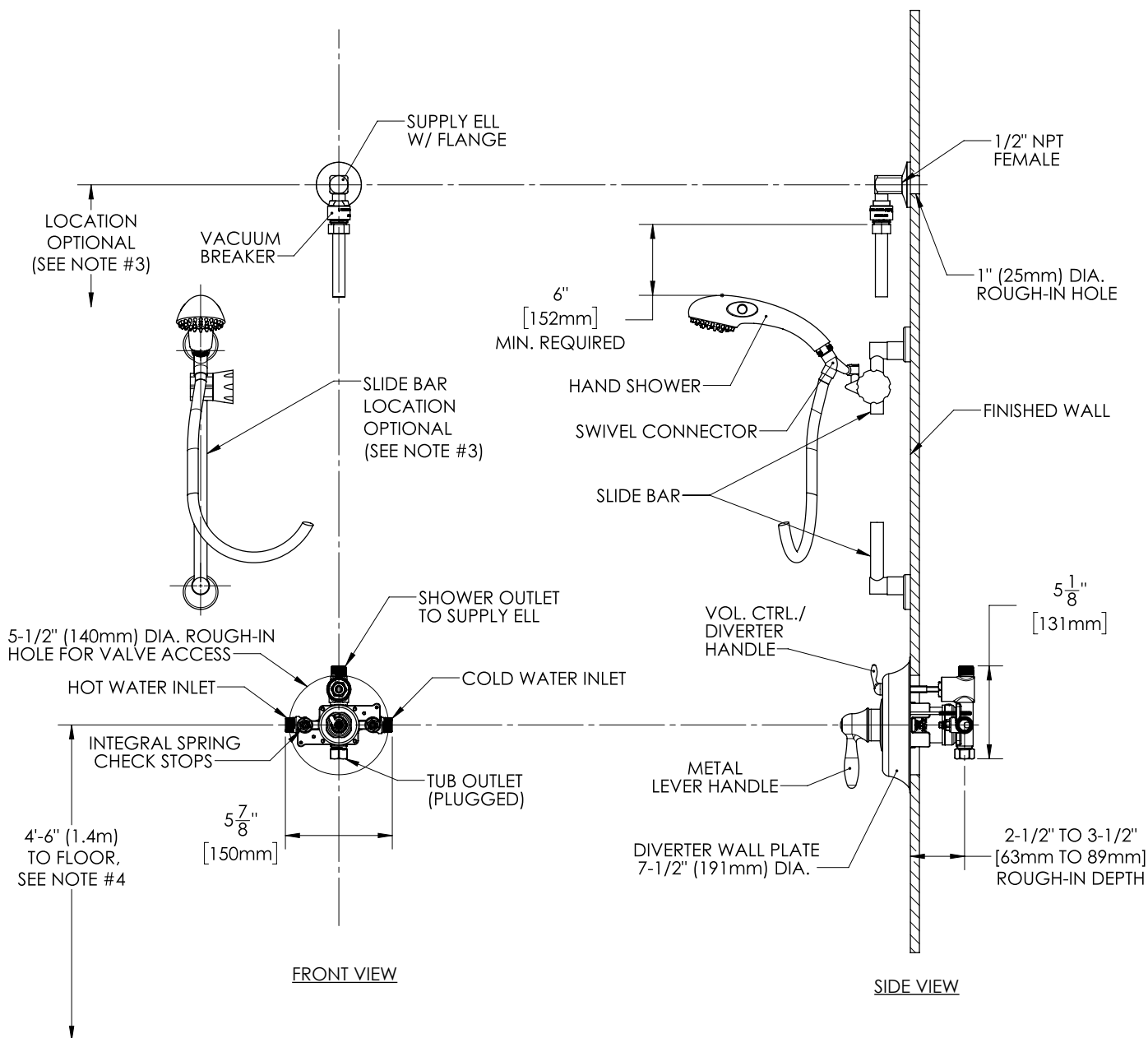
- VS-2272-E15 1.5 gpm hand shower & VS-156 pause/trickle adaptor ☐ -E15
- 69 in. white vinyl hose ☐ -VH
- Contractor packs available

WARRANTY:

- 5 year limited

NOTE: 1. All dimensions are in inches (millimeters) unless otherwise specified and are subject to change without notice.
 2. All inlets and outlets are 1/2" female copper sweat and 1/2" male NPT unless otherwise specified. 3. The locations of the slide bar and supply ell are optional, but restricted by the 69" hose length running from the supply ell connection to the hand shower and the 6" minimum requirement between the in-line vacuum breaker and top of the hand shower (hand shower adjusted to the highest position). 4. For ADA mounting locations consult ADAAG, ANSI A17.1, or state regulations.

DIMENSIONS:

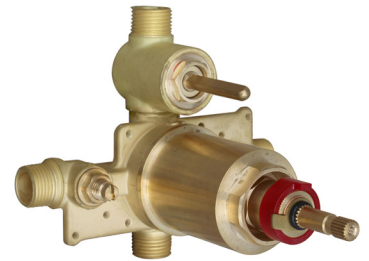


SPEAKMAN® SM-5450

SentinelPro™ Thermostatic/Pressure Balance Shower/Tub System

FEATURES:

- SentinelPro shower system includes SentinelPro concealed anti-scald thermostatic/pressure balance shower/bath valve combinations with integral diverter.
- Chrome plated Brass wall plate with metal index.
- Chrome plated metal lever handle.
- Adjustable temperature limit stop (TLS). Factory set @ 110 F°.
- Brass body with integral spring check stops.
- Dual function thermostatic/pressure balance cartridge.
- Can be installed back-to-back. Includes rough-in template.
- Four port valve with ½ in. female Copper sweat and ½ in. NPT male inlets and outlets.
- S-1554 chrome plated tub spout. In-line vacuum breaker.
- VS-100-PC handshower with flow control device reduces flow to 2.5 gpm (9.5 L/min) maximum.
- 69 in. square lock stainless steel hose with rubber liner.
- Chrome plated Brass supply elbow with wall flange.
- 30 in. slide bar with mounting screws.
- Swivel connector.
- Valve construction is Forged Brass Body and Brass Bonnet.
- Maximum capacity is 4.3 gpm +/- .2 @ 45 psi.
- Maximum Hot Water Supply Temperature is 185°F. Minimum Hot Water Supply Temperature is 5°F above set point.
- Maximum operating temperature is 120°F.
- Valve Temperature Set Point is 110°F (Based on 115-120°F hot & 55-65°F Cold).
- Maximum Static Pressure is 125 psi.
- Minimum flow (for +/-3°F performance) meets ASSE 1016 to 1.5 gpm (5.7 L/min).



FINISH:



PC

COMPLIANCE:

- ASSE 1016 & ASME 112.18.1/CSA B125.1 standards (SM-5400 Combo)

OPTIONS:

Add suffix to model #

- VS-2272-E15 1.5 gpm hand shower & VS-156 pause/trickle adaptor ☐ -E15
- 69 in. white vinyl hose ☐ -VH
- Contractor packs available

WARRANTY:

- 5 year limited

NOTE: 1. All dimensions are in inches (millimeters) unless otherwise specified and are subject to change without notice.
 2. All inlets and outlets are 1/2" female copper sweat and 1/2" male NPT unless otherwise specified a.
 3. The location of the slide bar and supply ell is optional, but restricted by the 69" hose length running from supply ell connection to hand shower and the 6" minimum requirement between the in-line vacuum breaker and top of hand shower (hand shower adjusted to the highest position).
 4. For ADA mounting locations consult ADAAG, ANSI A117.1, or state regulations.

DIMENSIONS:

