

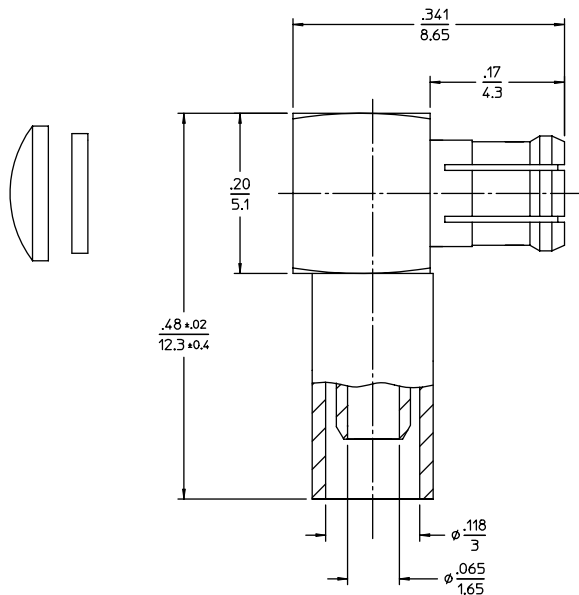
**NOTES:**

1. SEE DRAWING 45-0000 FOR ALL SPECIFICATIONS.
2. FOR USE WITH RG-316 CABLE OR EQUIVALENT.
3. FOR CABLING PROCEDURES USE CAP 9-09 WITH TRIMMING DIMENSIONS SHOWN.
4. CRIMP FERRULE USING .128 HEX DIE.

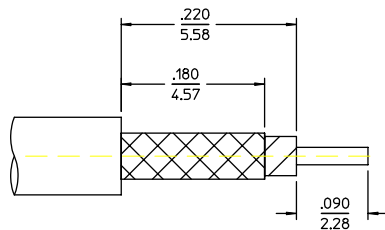
**MATERIALS**

- FRONT BODY \_\_\_\_\_ PHOSPER BRONZE PER ASTM B139  
 FINISH: 5 MICRO INCHES MIN GOLD  
 OVER 50 MICROINCHES NICKEL MIN
- BODY \_\_\_\_\_ BRASS PER ASTM B16  
 FINISH: 5 MICRO INCHES MIN GOLD  
 OVER 50 MICROINCHES NICKEL MIN
- INSULATOR \_\_\_\_\_ TEFLON
- COUNTER PIN \_\_\_\_\_ BRASS PER ASTM B16  
 FINISH: 20 MICRO INCHES MIN GOLD  
 OVER 50 MICROINCHES NICKEL MIN
- COVER \_\_\_\_\_ BRASS PER ASTM B16  
 FINISH: 5 MICRO INCHES MIN GOLD  
 OVER 50 MICROINCHES NICKEL MIN
- INSULATOR \_\_\_\_\_ TEFLON PER ASTM D1710
- FERRULE \_\_\_\_\_ BRASS PER ASTM B16  
 FINISH: 5 MICRO INCHES MIN GOLD  
 OVER 50 MICROINCHES NICKEL MIN

REV	DESCRIPTION	BY DATE	APPD
A	RELEASED PER ECR8675	C.W.B. 09/16/05	W.P.M.



CATALOG No. 452-900-0630Z



CABLE TRIMMING DIMENSIONS

PER ASME Y14.5M-1994 UNLESS OTHERWISE SPECIFIED: DIMENSIONS ARE IN INCHES OR INCHES/MM TOLERANCES: $\frac{\text{MM}}$ DECIMALS .XX/.X.X ± .008/0.2 .XXX/.X.XX ± ANGLES ± 2° SCALE: 4:1		<b>NORTHROP GRUMMAN</b>  62 Barne Industrial Road North Wallingford, CT 06492 <b>Winchester Electronics</b>	
<b>CUSTOMER DRAWING</b>		TITLE MCX CRIMP PLUG RIGHT ANGLE	
DRAWN C.W.B.	DATE 09/15/05	APPROVED T. C.	DATE 09/15/05
APPROVED W.P.M.		DATE 09/15/05	
<b>A</b>		SD452-900-0630Z	SHT. 1 OF 1 REV. A