

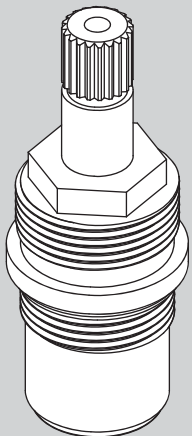
INSTRUCTIONS FOR MODELS

RPG05-106850

HOT ¼ TURN VALVE CARTRIDGE

RPG05-106851

COLD ¼ TURN VALVE CARTRIDGE



NEED HELP?

For additional assistance or service please contact:

SPEAKMAN® Company
400 Anchor Mill Road
New Castle, DE 19720

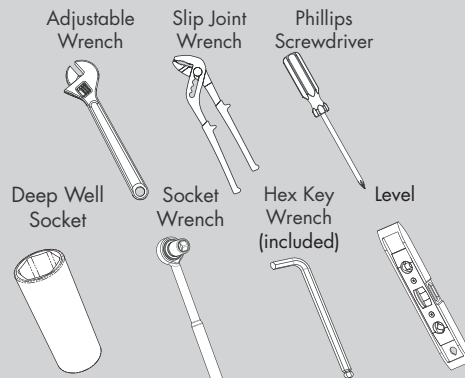
800-537-2107

customerservice@speakman.com

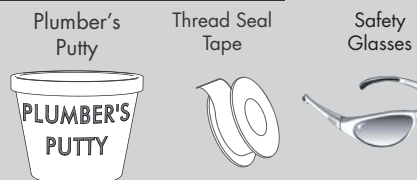
www.speakman.com

92-RPG05-10685X-01

TOOLS AND SUPPLIES



HELPFUL TOOLS & SUPPLIES:



IMPORTANT



- Do not over-tighten any connections or damage may occur.
- Be sure to read instructions thoroughly before beginning installation.
- This faucet has an operating range of 20-80 psi.

SAFETY TIPS

Cover your drain to prevent loss of parts. Be sure to wear eye protection while cutting pipe.

MAINTENANCE

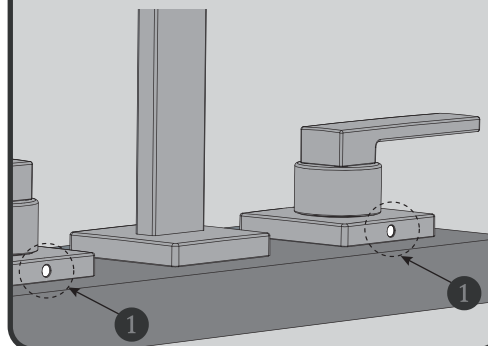
Your new Speakman Product is designed for years of trouble-free performance. Keep it looking new by cleaning it periodically with a soft cloth. The use of harsh chemicals and abrasives on any of the Speakman custom finish products may damage the finish and void the product warranty. Please be sure to only use approved cleaners. Please contact Speakman for any clarification of acceptable cleaners.

WARRANTY

Additional warranty information can be found at: www.speakman.com

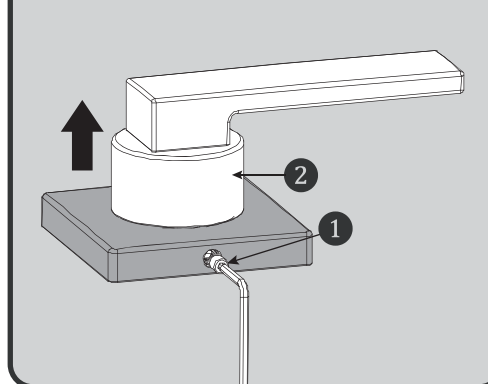
1

Turn water supply off. Remove Handle Assembly by first removing Rubber Plug (1) to expose Set Screw located on back of Handle Flange.



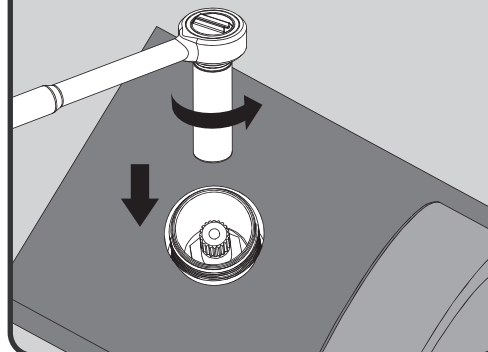
2

Loosen, but do not remove Set Screw (1). Remove Handle Assembly (2) by pulling upward.



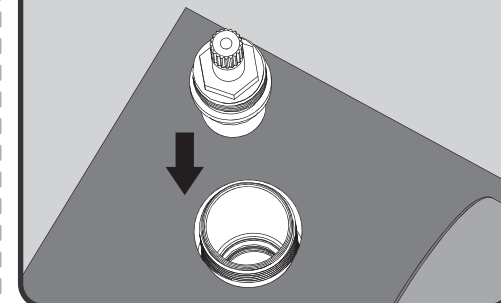
3

Insert 5/8" (16 mm) Deep Socket into top of end body and engage hex on top of ¼ turn valve cartridge and unscrew to remove.



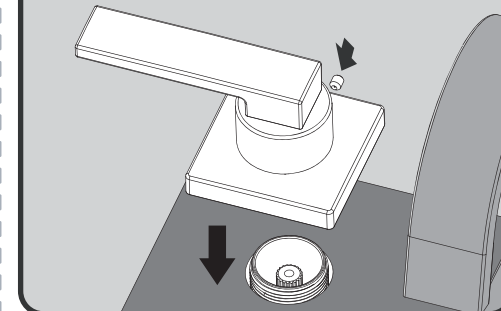
4

Insert new ¼ turn valve cartridge into end body and tighten to 18 ft./lbs. ±0.74 in/lbs (25 Nm). Turn water supply on and activate ¼ turn valve cartridge to activate and inspect for proper rotation and leaks.



5

Insert and fully engage new Handle Assembly onto ¼ turn valve broach, making sure handle and handle deck flange are aligned parallel when set screw is located facing back of unit. Secure by re-tightening Set Screw.



6

Insert Rubber Plug to hide Set Screw. Activate to inspect proper rotation.

