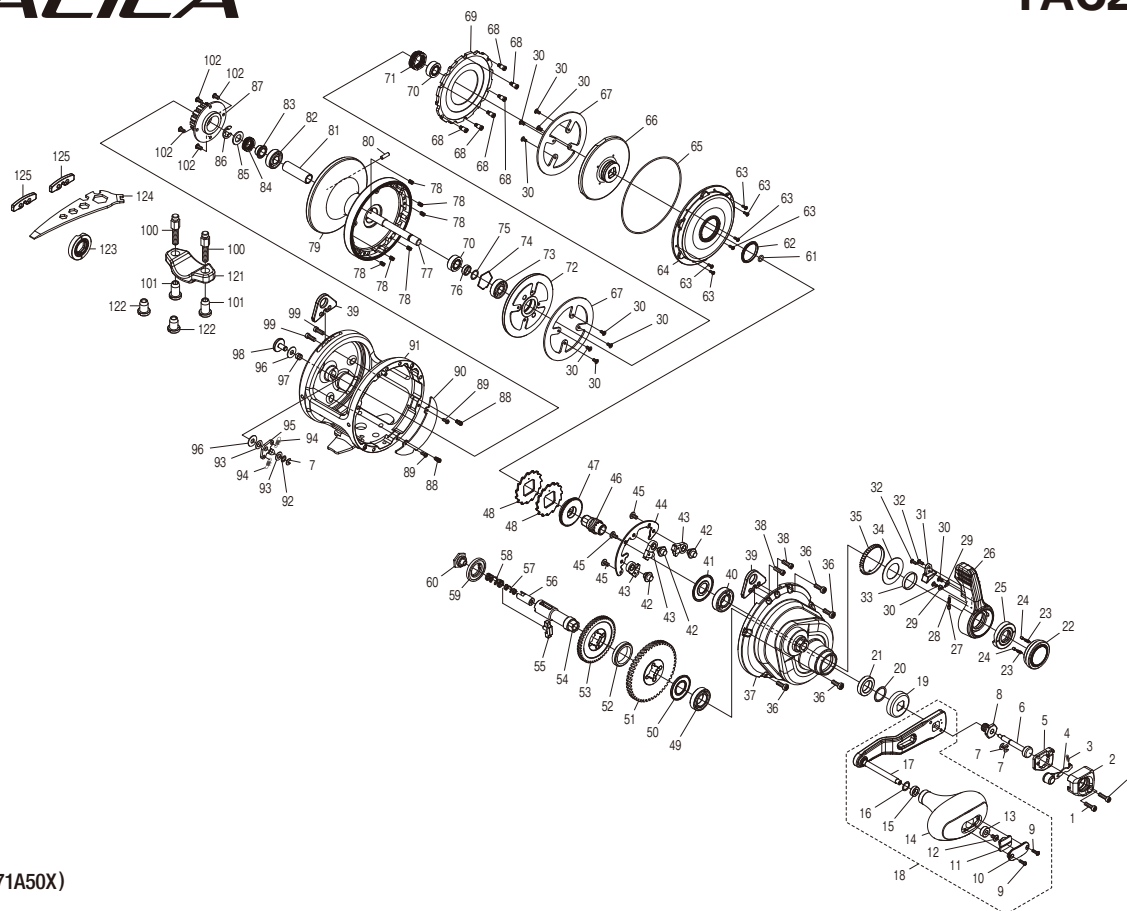


# SHIMANO

## TALICA

## TAC20IIA



(51RJ371A50X)

#	Part No.	Description	#	Part No.	Description	#	Part No.	Description
1	13ZQG	Screw	37	1482A	A Side Plate Assembly	73	104VH	Ball Bearing
2	13ZQH	Push Button Shield	38	10M6X	Screw	74	13ZR7	Bearing Retainer
3	10PWJ	Slide Plate Spring	39	141PF	Harness Lug	75	141QS	Washer
4	13ZRS	Slide Plate Assembly	40	104JP	Ball Bearing	76	141R3	Bearing Spacer
5	10PBN	Handle Nut Plate	41	141PP	Washer	77	141PK	Spool Shaft
6	109XB	Push Low Button Shaft	42	10PFS	Anti-Reverse Pawl Pin	78	10KJ6	Drag Plate Spring
7	105NK	E Lock	43	10MWC	Anti-Reverse Pawl Assembly	79	14867	Spool Assembly
8	106XP	Handle Bolt	44	10KVG	Anti-Reverse Pawl Keeper	80	13ZRC	Cross Pin
9	103NH	Screw	45	1055F	Screw	81	141QV	Spool Shaft Collar
10	13ZQJ	Handle Knob I.D. Plate	46	141PM	Pinion Gear A	82	104VJ	Ball Bearing
11	10B97	Handle Knob Seal	47	141PG	Pinion Gear B	83	13ZRF	Drag Spring Spacer
12	103E9	Screw	48	10DAN	Anti Reverse Ratchet	84	13ZRG	Pressure Release Spring
13	10EU0	Handle Knob Bushing A	49	10KXA	Ball Bearing	85	13ZRH	Washer
14	141P9	Handle Knob	50	13ZQW	Drive Gear Washer	86	105RZ	E Lock
15	104UJ	Handle Knob Bushing B	51	141Q3	Drive Gear A	87	141PQ	Click Gear
16	104FH	Washer	52	10D61	Friction Washer	88	108W4	Click Spring Shaft
17	14826	Handle Shank Assembly	53	141Q5	Drive Gear B	89	10LVH	Screw
18	14827	Handle Assembly	54	10D6L	Drive Shaft	90	141QU	Set Plate Sticker
19	10KZS	Drive Shaft Shield	55	10KXH	Gear Select Cross Bar	91	1482B	Frame Assembly
20	10G9V	Washer	56	10KXL	Cross Bar Stop	92	144C6	Washer
21	109AR	Drive Gear Bushing	57	109VM	Drive Shaft Spring B	93	10GA6	Spacer
22	14828	Pre-Program Dial Assembly	58	10KXQ	Drive Shaft Spring	94	104B0	Click Spring
23	10K07	Click Spring	59	10D5B	Friction Washer	95	10GQW	Click Pawl
24	10JX6	Click Pin	60	10FCD	Drive Shaft Screw	96	104H2	Spacer
25	141Q0	Lever Shaft Body	61	10EYZ	O Ring	97	104MS	Click Switch Cam
26	14829	Drag Control Lever Assembly	62	10EWA	Waterproof Ring	98	1459G	Click Button
27	13ZQM	Lever Click	63	10PRU	Screw	99	10M6T	Screw
28	10C3X	Lever Click Shoe	64	141PR	Cooling Shield	100	10JBZ	Rod Clamp Bolt
29	13ZQN	Lever Click Cover	65	1090B	O Ring	101	145R5	Rod Clamp Nut
30	10S65	Screw	66	141PN	Pinion Guard	102	10LSQ	Screw
31	141Q1	Lever Protector	67	141PT	Drag Washer			
32	13ZQQ	Screw	68	141PS	Screw	121	10AS1	Rod Clamp (Accessory)
33	108DP	Lever Thrust Ring	69	141R4	Drag Plate	122	10JBX	Rod Clamp Bolt (Accessory)
34	10G6G	Washer	70	104Q5	Ball Bearing	123	141Q2	Light Line Cam (Accessory)
35	10F6C	Lever Click Gear	71	13ZR5	Drag Spring	124	10MJ8	Wrench (Accessory)
36	13ZQR	Screw	72	141PU	Pressure Plate B	125	141PC	Harness Lug Plug (Accessory)

Please note that the number of adjusting washers may not be the same as shown in the exploded views.  
(Adjustment will vary with each individual product.)

(240412)\_002