

FEATURES & SPECIFICATIONS

**INTENDED USE** — For steel or concrete poles.

**CONSTRUCTION** — Body is constructed from A500 Grade B steel tubing. Welding follows industry standards best practices. Bracket is galvanized (per ASTM A-123) or painted after fabrication.

**FINISH** — Extra durable standard powder-coat finishes include Dark Bronze, White, Black, and Natural Aluminum colors. Architectural Colors and Special Finishes are available by quote and include, but are not limited to Hot-dipped Galvanized, Paint over Hot-dipped Galvanized, RAL Colors, Custom Colors and Extended Warranty Finishes. Factory-applied primer paint finish is available for customer field-paint applications.

**INSTALLATION** — Mounting hardware included.

**WARRANTY** — 1-year limited warranty. Complete warranty terms located at: [www.acuitybrands.com/support/warranty/terms-and-conditions](http://www.acuitybrands.com/support/warranty/terms-and-conditions)

**NOTE:** Actual performance may differ as a result of end-user environment and application. Specifications subject to change without notice.

Catalog Number
Notes
Type

Square Bullhorn

SBS

STEEL (SBS) SQUARE BULLHORN



(See next page for dimensions and drawings.)

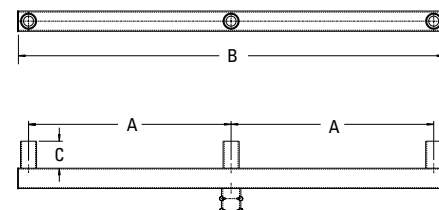
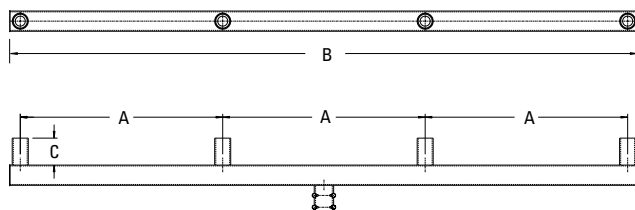
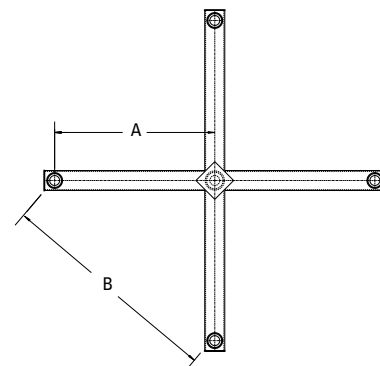
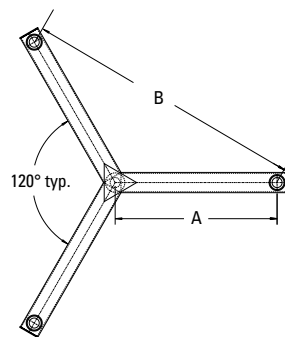
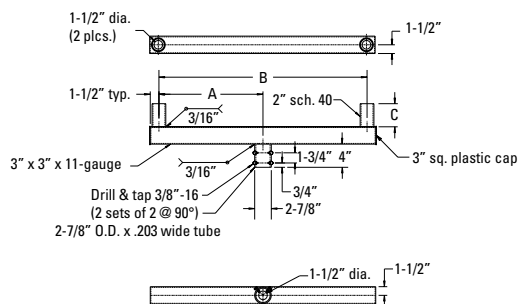
**ORDERING INFORMATION**      Lead times will vary depending on options selected. Consult with your sales representative.      **Example:** SBS28 DDBXD

Series	Tenon slipfitter size	Finish¹
SBS28    2 in line	(blank)    T20 2-1/2" I.D.	<u>Super durable colors</u>
SBS32    3 at 120°	T25        3-1/16" I.D.	DDBXD    Dark bronze
SBS38    3 in line	T35        4-1/4" I.D.	DBLXD    Black
SBS48    4 in line		DNAXD    Natural aluminum
SBS49    4 at 90°		DWHXD    White
Refer to <a href="#">POLE-BS</a> spec sheet for reference		DDBTXD    Textured dark bronze
		DBLBXD    Textured black
		DNATXD    Textured natural aluminum
		DWHGXD    Textured white
		<u>Other finishes</u>
		GALV       Galvanized steel
		<u>Primer finish</u>
		DPRM       Red primer
		<u>Architectural colors and special finishes</u>
		Paint over galvanized, RAL colors, custom colors and extended warranty finishes available.

**NOTES:**

1. Finish must be specified. Additional colors available; see Architectural Colors brochure linked [here](#) (Form No. 794.3).

# SBS Square Bullhorn, Steel or Concrete Poles



SBS (Square - Bullhorn - Steel) - TECHNICAL INFORMATION											
Lithonia Lighting Catalog number	Nominal arm length (ft.)	Dimensions (in.)			Bracket EPA (ft²)	Bracket weight (lbs.)	Max Per Fixture EPA with AASHTO 2013			Max. per fixture weight (lbs.)	Max Mounting Height (ft)
		A	B	C			100MPH	120MPH	150MPH		
SBS28	1-1/2	18	36	4	1.1	20	8.0	6.0	4.5	85	50
SBS28 T25	1-1/2	18	36	4	1.1	23	8.0	6.0	4.5	85	50
SBS28 T35	1-1/2	18	36	4	1.1	26	8.0	6.0	4.5	85	50
SBS32	2	24	41	4	1.4	31	8.0	6.0	4.5	85	50
SBS32 T25	2	24	41	4	1.4	34	8.0	6.0	4.5	85	50
SBS32 T35	2	24	41	4	1.4	37	8.0	6.0	4.5	85	50
SBS38	2-1/2	30	63	4	1.7	31	8.0	6.0	4.5	85	50
SBS38 T25	2-1/2	30	63	4	1.7	34	8.0	6.0	4.5	85	50
SBS38 T35	2-1/2	30	63	4	1.7	37	8.0	6.0	4.5	85	50
SBS48	4	30	93	4	2.4	44	8.0	5.5	3.5	85	50
SBS48 T25	4	30	93	4	2.4	47	8.0	5.5	3.5	85	50
SBS48 T35	4	30	93	4	2.4	50	8.0	5.5	3.5	85	50
SBS49	2	24	34	4	2.1	44	8.0	5.5	3.5	85	50
SBS49 T25	2	24	34	4	2.1	47	8.0	5.5	3.5	85	50
SBS49 T35	2	24	34	4	2.1	50	8.0	5.5	3.5	85	50

## IMPORTANT:

- These specifications are intended for general purposes only. Lithonia Lighting reserves the right to change material or design, without prior notice, in a continuing effort to upgrade its products.

## CAUTION:

- The arms described herein are designed for applications in areas of normal winds. Consult the factory prior to the design of systems to be mounted on structures such as bridges or buildings, or areas known to have abnormal winds such as airports or coastal areas. Failure to consider these factors in the system design could result in the failure of the pole or mast arm, and consequently personal injury or property damage.