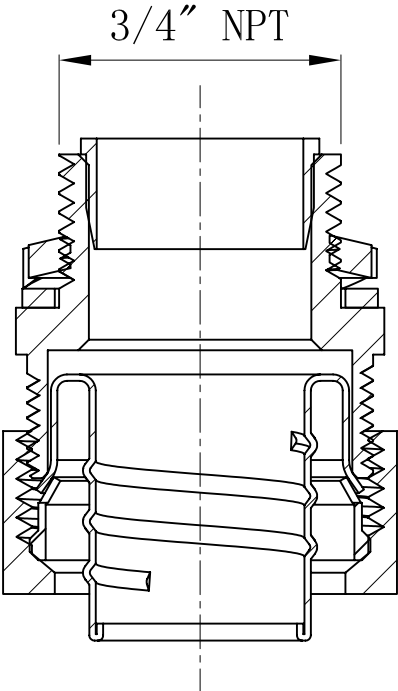
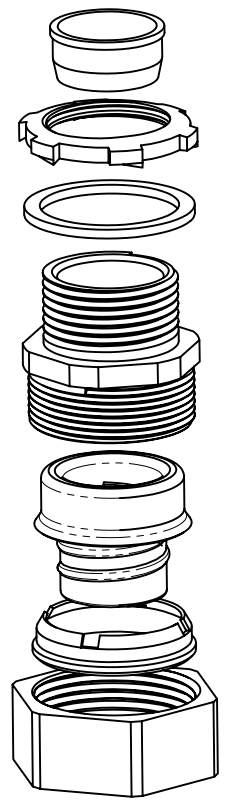
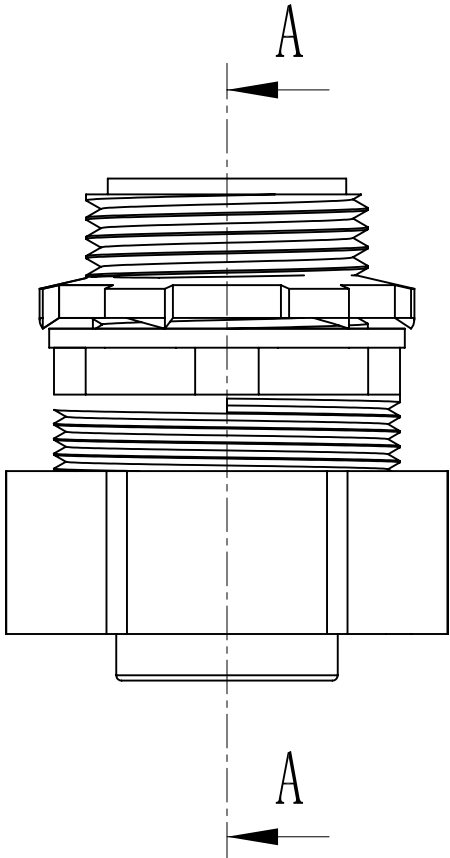


SIDES	BOTTOM
Material: Casting, Zinc Plated	



CUTAWAY VIEW A-A



DESCRIPTION
TRADE REFERENCE TERMS

This data sheet is for reference only .GARVIN INDUSTRIES reserves the right to make changes to the design without prior notice.

STANDARD PACKING	<h1 style="margin: 0;">GARVIN INDUSTRIES</h1>		
10 PCS			
	TITLE	<h2 style="margin: 0;">STRAIGHT CONNECTORS (INSULATED THROAT)</h2>	
	SIZE	DWG NO.	REV
	A4	LTC-75	
	<h3 style="margin: 0;">DATA SHEET</h3>		