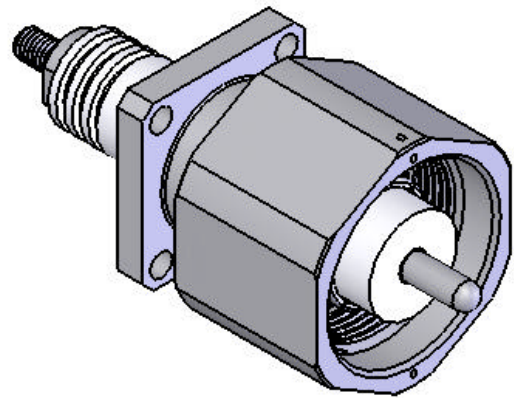
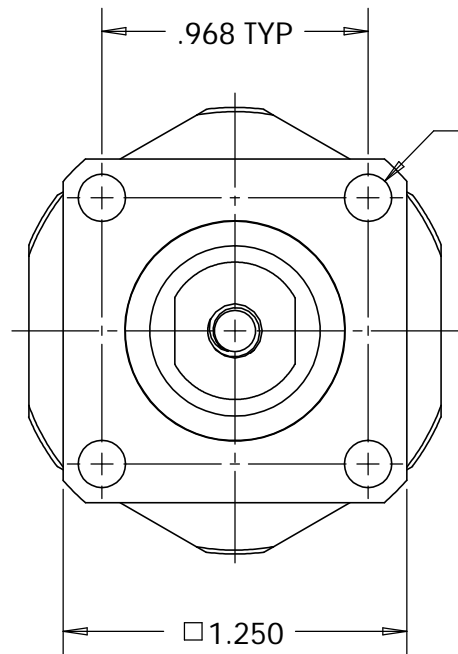


This document, including the design, configuration and mechanical features revealed herein are the sole, confidential and proprietary property of TRU Corporation. Reproduction or use thereof, in whole or part, is prohibited without the prior written consent of TRU Corporation.

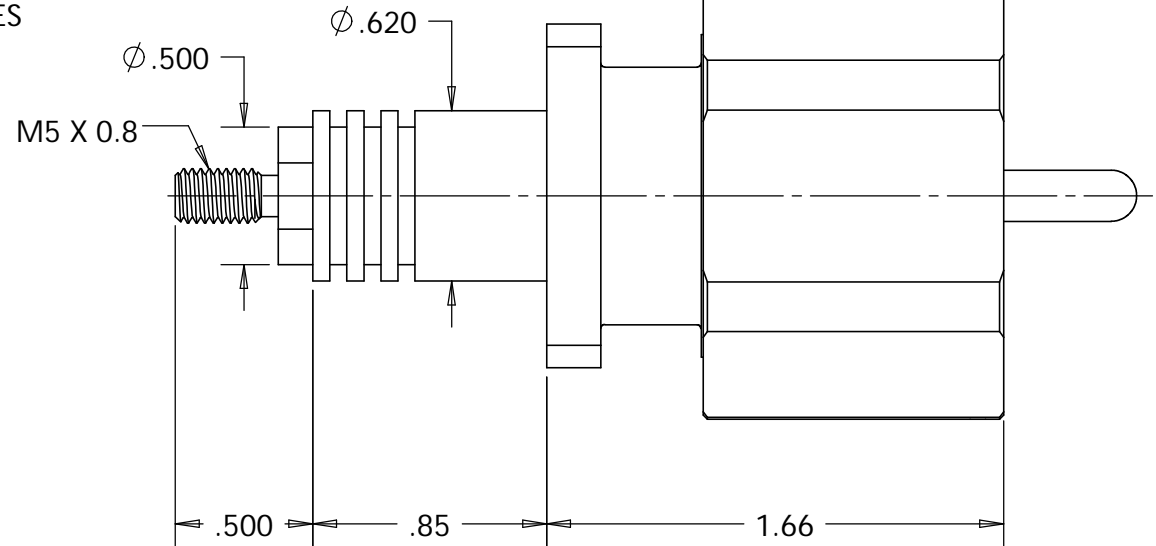
REV.	DESCRIPTION	DATE	APPROVED
-	ORIGINAL ISSUE	01/18/08	AM



ISOMETRIC VIEW
SCALE 1:1



Ø.172 HOLE
4 PLACES



ENGINEERING DATA:



ELECTRICAL:
IMPEDANCE: 50 OHMS NOMINAL

MECHANICAL:
INTERFACE: LC(m) PER MIL-C-3650

MATERIAL:
INSULATOR: PTFE (TEFLON)
ALL METAL PARTS: BRASS

FINISH:
CONTACT: SILVER PLATED
CONTACT FINGERS: SILVER PLATED
ALL OTHER METAL PARTS: NICKEL PLATED

NOTES:
1. UNLESS OTHERWISE SPECIFIED; ALL
DIMENSIONS ARE REFERENCE ONLY.
2. PRODUCT COMPLIES WITH ROHS
DIRECTIVE 2002/95/EC.

MATERIAL		DO NOT SCALE DRAWING	DRAWN	DATE	<div><div>TRU CORPORATION 245 LYNNFIELD STREET, PEABODY, MA 01960</div><div>The Custom Interconnect Leader™</div></div>			
			Warren Whitten	1/14/08				
			ENG APPR.	DATE				
			AM	01/17/08				
UNLESS OTHERWISE SPECIFIED: DIMENSIONS ARE IN INCHES		MFG APPR.	DATE	TITLE: CONNECTOR, COAXIAL, RF LC(m) RECEPTACLE, PANEL				
		OTHER APPR.	DATE					
		THIRD ANGLE PROJECTION						
COMMENTS:		TOLERANCES: FRACTIONS: ±1/64 .XX : ±.01 .XXX: ±.005 ANGLES: ±1/2° MACHINED SURFACES: 63/			SIZE	DWG. NO.	REV	
					B	TRU-10803		-
					CAGE CODE: 92180		SCALE: 1.5:1	SHEET 1 OF 1
surface area: sq inch		weight: lbs						