

MERMAID TERRARIUM

Turn this light up terrarium into a magical underwater mermaid world. Everything you need is included!

Your complete set includes ready-to-grow crystal coral, a mermaid, jewels, a squishy starfish and colorful mermaid stickers.

Add the shell, sand and undersea stickers and watch your mermaid terrarium glow-in-the-dark.



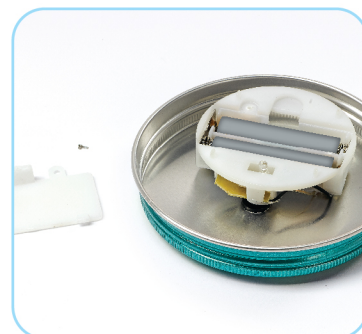
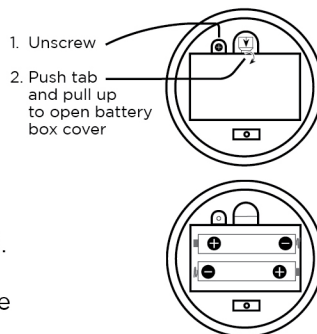
Safety First!

Adult supervision and assistance is required. Your crystal growing set requires the use of a microwave and hot water to dissolve the crystal powder. Although these components have been safety tested, you should avoid contact with eyes, nose and mouth. Wash the area immediately with water if contact occurs. Before you begin, wear old clothes and cover your work surface. The crystal growing powder and solution may stain skin, clothing, fabric and other surfaces.

Battery Warnings:

Your light needs two AAA batteries (not included). The battery box is secured by a screw; a small Phillips screwdriver is needed to open it. When installing batteries, ask for adult help and assistance. Follow the diagram below. Set aside light until you are ready to assemble your Space Terrarium.

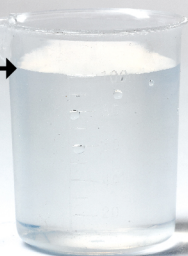
- Discard batteries carefully.
- Do not allow children to play with batteries.
- Keep batteries out of children's reach.
- To avoid accidental swallowing, never put batteries in mouth for any reason.
- If a battery is ingested, immediately seek medical attention and call your local poison center.
- Be sure the battery compartment is tightly screwed closed.
- Do not mix old and new batteries.
- Do not mix alkaline, standard (carbon-zinc) or rechargeable (nickel-cadmium) batteries.



Crystals *Adults assistance needed for this step. Use caution as cups may be hot!* You will need: 3 microwave-safe cups. We recommend using a cup with a handle.) • Paper towels
Follow each of these steps CAREFULLY. Failure to do so will result in crystals that do not grow.

1

100ml



Using the included measuring cup, add 100 ml of tap water to your microwave-safe cup.

Pro Tip: It is best to use flat bottom cups slightly larger than your crystal growing rock so the solution stays in full contact with the rock.

2



Stir in crystal growing powder (**adults only**). Microwave for approx. 1 minute. Stir until the crystals are completely dissolved.

Pro Tip: If the powder is not dissolving, an adult can continue to microwave it in 10 second increments. Continue heating and stirring until dissolved. If any grains remain in the bottom of your cup, that means the solution is not fully dissolved. Reheat and continue stirring. The water should be hot but not boiling!



WARNING:

This set contains chemicals that may be harmful if misused. Read cautions on individual containers carefully. Not to be used by children except under adult supervision.

USE ONLY AS INSTRUCTED

Do not swallow or inhale.
Do not get in eyes, on skin or clothing.
Keep out of reach of small children.

FIRST AID TREATMENT

If swallowed, rinse mouth with water.
Consult a physician.
If inhaled, move person into fresh air.
Consult a physician.

In case of eye or skin contact,
rinse well with water.
If irritation occurs, seek
medical advice.

3



Wipe the stir stick on your paper towel and continue until you have made all 3 colors of crystal growing solution.

4



Using a spoon, slowly lower each crystal growing stone into the solution, flat side down. The stones must be covered in the liquid and left undisturbed for 24 hours. Shaking or moving the cups may result in crystals that do not grow. Use a spoon to gently lift the crystals from the solution after 24 hours have elapsed. Place them on a paper towel to dry.

If after 24 hours your crystals have not grown, remove the rocks and carefully reheat the solution following the steps above.

Assemble Your Terrarium *While you are waiting for your crystals to grow, it's time to finish the rest of your terrarium.*

Squishy Starfish



Remove the release paper from the starfish and center it over the on/off button. Decorate it with the small adhesive pearls and wiggly eyes. Gently push the starfish to turn the terrarium light on and off.

Stickers and Rhinestones



Apply the colored and glow-in-the-dark stickers to the outside of your container. Add the peel-and-stick rhinestone bubbles too.

Gravel and Accessories



Pour the gravel onto the bottom of the terrarium. Roll the sticky putty into a ball and slightly press it inside the shell. Slightly push the mermaid, pearls and jewels into the putty. You can save some of the jewels and pearls to place in the gravel.

Crystal Coral



Place your dried crystals inside your terrarium.

Pro Tip: Rough handling may dislodge the crystals so handle them with care.

Watch it Glow!

Now turn off the lights and watch your stickers glow in the dark.

Pro Tip: To help your stickers glow brighter, charge them under a bright light.



Look for the Crystal Space Terrarium!

Complete set includes:

Ready-to-grow crystals, sparkling space rocks, a squishy UFO, rhinestones and colorful stickers. Add in the friendly alien, moon rocks, stars and constellations stickers and watch your terrarium glow in the dark!

#6343000 Crystal Mermaid Terrarium

© Faber-Castell USA, Inc.
Cleveland, Ohio 44125
www.fabercastell.com
Designed in USA
Made in China
Non Toxic Safe for children



www.CreativityforKids.com

Need Help?

Call Toll Free: 800-311-8684
e-mail: consumer@fabercastell.com

Chat or view FAQs & INFO online:
creativityforkids.com