


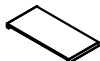


ITEM: 6820-75200T-80 Rectangle Dining Table Top
 6820-75200T-85 Rectangle Dining Table Top
 6820-75200T-99 Rectangle Dining Table Top
 6820-75200B-80 Rectangle Dining Table Base
 6820-75200B-85 Rectangle Dining Table Base
 6820-75200B-99 Rectangle Dining Table Base

Thank you for purchasing this quality product. Be sure to unpack carefully looking for small parts which may have come loose during shipment.

Read all instruction and study the drawing carefully before starting the assembly process.

HARDWARE PACK				
NO.	DRAWING	DESCRIPTION	SIZE	Q'TY
A		Allen Wrench	73*29*5mm	1 PC
B		Bolt	5/16*40mm	8 PCS
C		Lock Washer	5/16"	8 PCS
D		Flat Washer	5/16*22mm	8 PCS
E		Threaded Rod	3/8*100mm	2 PCS
F		Flat Washer	3/8*22mm	2 PCS
G		Lock Washer	3/8"	2 PCS
H		Nut	3/8"	2 PCS
K		Open Wrench		1 PC

PART LIST			
NO.	DRAWING	DESCRIPTION	Q'TY
①		Table Top	1 PC
②		Base	2 PCS
③		Bottom Rail	1 PC
④		Leaf	2 PCS

ASSEMBLY INSTRUCTION

ITEM: 6820-75200T-80 Rectangle Dining Table Top
6820-75200T-85 Rectangle Dining Table Top
6820-75200T-99 Rectangle Dining Table Top
6820-75200B-80 Rectangle Dining Table Base
6820-75200B-85 Rectangle Dining Table Base
6820-75200B-99 Rectangle Dining Table Base

Thank you for purchasing this quality product. Be sure to unpack carefully looking for small parts which may have come loose during shipment.

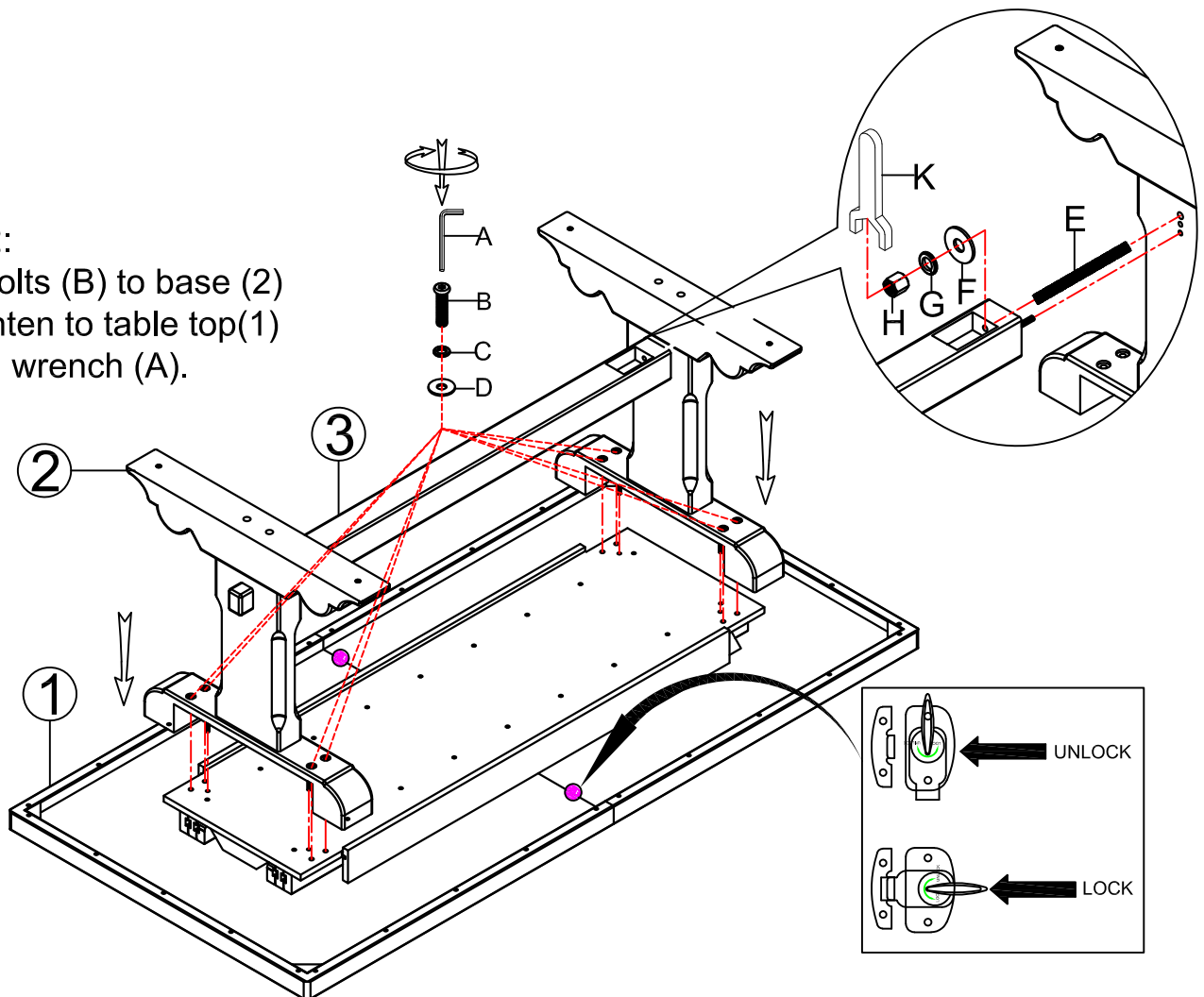
Read all instruction and study the drawing carefully before starting the assembly process.

STEP 1:

Attach base (2) and bottom rail (3) with threaded rod (E) by open wrench (K).

STEP 2:

Insert bolts (B) to base (2) and tighten to table top(1) by allen wrench (A).

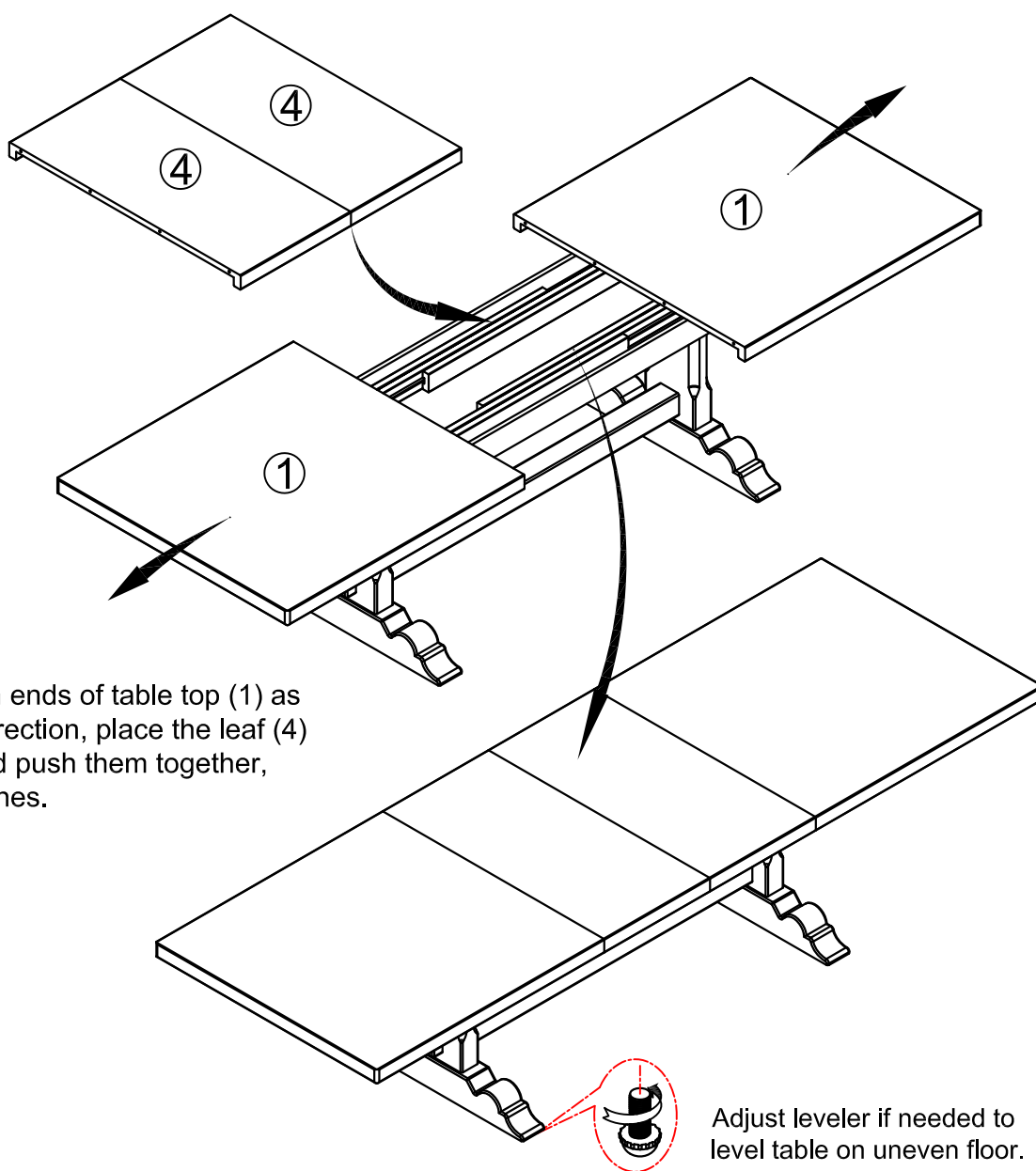


ASSEMBLY INSTRUCTION

ITEM: 6820-75200T-80 Rectangle Dining Table Top
6820-75200T-85 Rectangle Dining Table Top
6820-75200T-99 Rectangle Dining Table Top
6820-75200B-80 Rectangle Dining Table Base
6820-75200B-85 Rectangle Dining Table Base
6820-75200B-99 Rectangle Dining Table Base

Thank you for purchasing this quality product. Be sure to unpack carefully looking for small parts which may have come loose during shipment.

Read all instruction and study the drawing carefully before starting the assembly process.



STEP 3:

Pull out both ends of table top (1) as the arrow direction, place the leaf (4) between and push them together, lock the latches.

Note: Take opposite actions to remove table leaf.