

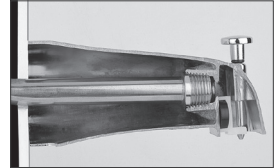


614-2

## Full-Slip Male Adapter

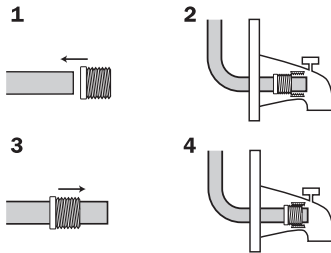
Brass Female Sweat × MIP Thread

- Eliminates tedious measuring
- 3/4" and 1" sizes are ideal for closet or urinal stub out adapters
- Replaces male adapters when hex is not necessary



1/2" size is ideal for use with our tub spout ells.

### Tub Spout Application



1. Slide slip adapter onto copper tube, threads out.
2. Push adapter to desired location with tub spout.
3. Slide slip adapter 1/4" toward open end.
4. Solder adapter in place. Let cool. Install tub spout.

### Related Products

Smart Spout

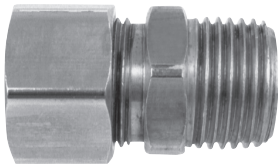


Item No	Connection	Pkg	Min Qty	Case Qty
614-2	1/2" female sweat × 1/2" MIP thread	B	50	500
614-3	3/4" female sweat × 3/4" MIP thread	B	50	500
614-4	1" female sweat × 1" MIP thread	B	25	250

## Full-Slip Male Adapter

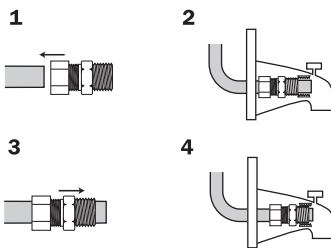
Brass Compression × MIP Thread

- Full-slip fitting slides completely over 1/2" CTS
- Use wherever 1/2" MIP threads must be replaced without soldering
- Use on 1/2" CTS copper tube only



614-22C

### Tub Spout Application



1. Slide onto copper tube, threads out.
2. Push adapter back with tub spout.
3. Slide adapter 1/4" toward open end.
4. Tighten comp. nut and install tub spout.

Item No	Connection	Pkg	Min Qty	Case Qty
614-22C	5/8" compression × 1/2" MIP	B	25	250
614-22CPK2	5/8" compression × 1/2" MIP, 1/bag	C*	20	20