



TRAC-MASTER®

Low Voltage

MR16 LED-COMPATIBLE LAMP HOLDERS T1040 and T1042

Project: _____

Fixture Type: _____

Location: _____

Contact/Phone: _____

PRODUCT DESCRIPTION

These low voltage fixtures offer both mechanical and electrical compatibility with most MR16 LED lamps (by others). Constructed with open or semi-open designs, this series provides for improved airflow around the lamp, leading to better cooling and optimized LED lamp life. They may also be used with MR16 halogen lamps with integral cover glass. The horizontal version has an integral transformer housing which is centered above the lampholder, offering a new and unique aesthetic in a small, close-to-the-trac fixture footprint.

PRODUCT SPECIFICATIONS

Construction Lampholders are constructed of die cast aluminum • Transformer housings are constructed of molded polycarbonate.

Socket GU5.3/GX5.3 ceramic bi-pin.

Lamp Compatible with most 12VAC MR16 LED lamps (by others) – contact lamp manufacturer to confirm transformer compatibility • Also compatible with 50W max. 12VAC MR16 halogen lamps with integral cover glass.

Transformer Hatch RL12-60M-LED, 60VA, 12VAC solid state electronic • Integral to fixture in either horizontal or vertical orientation • ANSI/IEEE C62.41 Class A transient protection • Short circuit protection.

Dimming Dimmable (with dimmable lamps) using Acuity nLight wired dimming controls, including Fresco controllers, when combined with an nLight nSP5 PCD ELV 120 Secondary Relay and Dimming Pack (required) at the trac input • Dimming range of 100% down to 1% typical* with a minimum load of one fixture and maximum load of 475W @ 120VAC • Also dimmable using a variety of standard wall box dimmers – contact lamp manufacturer to confirm compatibility.

Juno Universal Trac Adapter Universally compatible with both Trac-Master 1-circuit or 2-circuit trac, Trac-Lites trac, monopoints and special mountings • Also UL Recognized for use on ConTech® LT Series track • Copper alloy contacts provide precise spring action - no arcing and will not take a set • True, positive electrical ground • Spring-loaded positive latch with embossed polarity arrows secures trac light to trac • Two-position power contact provided for two-circuit application.

Alternate GTYPE Trac Adapter Compatible with track systems based on GES type track, including Lithonia LT Commercial Track (not LTS type) • System specific and assembled to trac fixture • Consult factory for additional information.

Alternate HTYPE Trac Adapter Compatible with track systems which use a H-type track adapter, including Lithonia LTS Decorative Track (not LT type) • System specific and assembled to trac fixture • Two-position power contact provided for two-circuit application • Consult factory for additional information.

Alternate LTYPE Trac Adapter Compatible with track systems which use a L-type track adapter • System specific and assembled to trac fixture • Two-position power contact provided for two-circuit application • Consult factory for additional information.

Accessories T1042 can accommodate up to two accessories using Accessory Spring Kit.

Aiming 90° vertical aiming capability and 358° rotation.

Labels UL and C-UL Listed • Fixtures can be assembled with reduced maximum wattage rating labels to facilitate energy code compliance – consult factory • Union made • Assembled in U.S.A.

Warranty 3-year limited warranty. This is the only warranty provided and no other statements in this specification sheet create any warranty of any kind. All other express and implied warranties are disclaimed. Complete warranty terms located at: www.acuitybrands.com/support/warranty/terms-and-conditions

Note: Actual performance may differ as a result of end-user environment and application. Specifications subject to change without notice.

*Typical dimming range based on laboratory evaluation – actual installation conditions and results may vary.

ConTech is a registered trademark of ConTech Lighting.



One Lithonia Way • Conyers, GA 30012 • Phone 1-800-705-SERV (7378) • Visit us at www.acuitybrands.com
Printed in U.S.A. © 2017-2023 Acuity Brands Lighting, Inc. Rev. 05/11/23

TRAC-MASTER®

Low Voltage

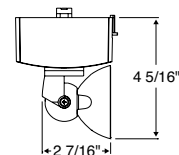
**MR16 LED-COMPATIBLE
LAMP HOLDERS****T1040 and T1042****Horizontal Lily16**

Catalog Number	Description	Finish	Lamp
T1040 H WH	Lily16 - Horizontal	White	12V, 50W MR16 max.
T1040 H BL	Lily16 - Horizontal	Black	12V, 50W MR16 max.
T1040 H SL	Lily16 - Horizontal	Silver	12V, 50W MR16 max.
T1040 GTYPE H WH	Lily16 - Horizontal w/G-Type Trac Adapter	White	12V, 50W MR16 max.
T1040 GTYPE H BL	Lily16 - Horizontal w/G-Type Trac Adapter	Black	12V, 50W MR16 max.
T1040 HTYPE H WH	Lily16 - Horizontal w/H-Type Trac Adapter	White	12V, 50W MR16 max.
T1040 LTYPE H WH	Lily16 - Horizontal w/L-Type Trac Adapter	White	12V, 50W MR16 max.
T1040 LTYPE H BL	Lily16 - Horizontal w/L-Type Trac Adapter	Black	12V, 50W MR16 max.

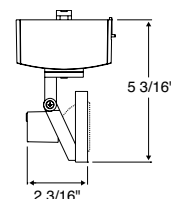
ACCESSORIES**Cat. No. Description****T40N¹** Monopoint CanopyOther accessories can be found on specification sheet [D1.2.0](#).

Notes:

1 Add finish code to complete catalog number (Example: T40N WH).

Dimensions**Horizontal Concentricity16**

Catalog Number	Description	Finish	Lamp
T1042 H WH	Concentricity16 - Horizontal	White	12V, 50W MR16 max.
T1042 H BL	Concentricity16 - Horizontal	Black	12V, 50W MR16 max.
T1042 H SL	Concentricity16 - Horizontal	Silver	12V, 50W MR16 max.
T1042 GTYPE H WH	Concentricity16 - Horizontal w/G-Type Trac Adapter	White	12V, 50W MR16 max.
T1042 GTYPE H BL	Concentricity16 - Horizontal w/G-Type Trac Adapter	Black	12V, 50W MR16 max.
T1042 LTYPE H WH	Concentricity16 - Horizontal w/L-Type Trac Adapter	White	12V, 50W MR16 max.
T1042 LTYPE H BL	Concentricity16 - Horizontal w/L-Type Trac Adapter	Black	12V, 50W MR16 max.

Dimensions**ACCESSORIES**

Cat. No.	Description	Cat. No.	Description	Cat. No.	Description
TASK2	Accessory Spring Clip Kit	DGF 275¹	Dichroic Glass Filters	PRISM 275¹	Prismatic Spread Lens
HCLBL 275¹	Hexagonal Cell Louver - Black	DCCF 275¹	Dichroic Color Correction Filters	LSPREAD 275¹	Linear Spread Lens
SNOOTBL 275¹	Snoot - Black	UVF 275¹	UV Filter	T40N²	Monopoint Canopy
EYEBROWBL 275¹	Eyebrow - Black	DIFF 275¹	Diffusion Lens		
CGF 275¹	Color Glass Filters	SOLITE 275¹	Uniformity Lens (Solite)		

See specification sheet [D1.2.2](#) for details. Other accessories can be found on specification sheet [D1.2.0](#).

Notes:

1 Filters, lenses and louver require Accessory Spring Clip Kit for installation.

2 Add finish code to complete catalog number (Example: T40N WH).