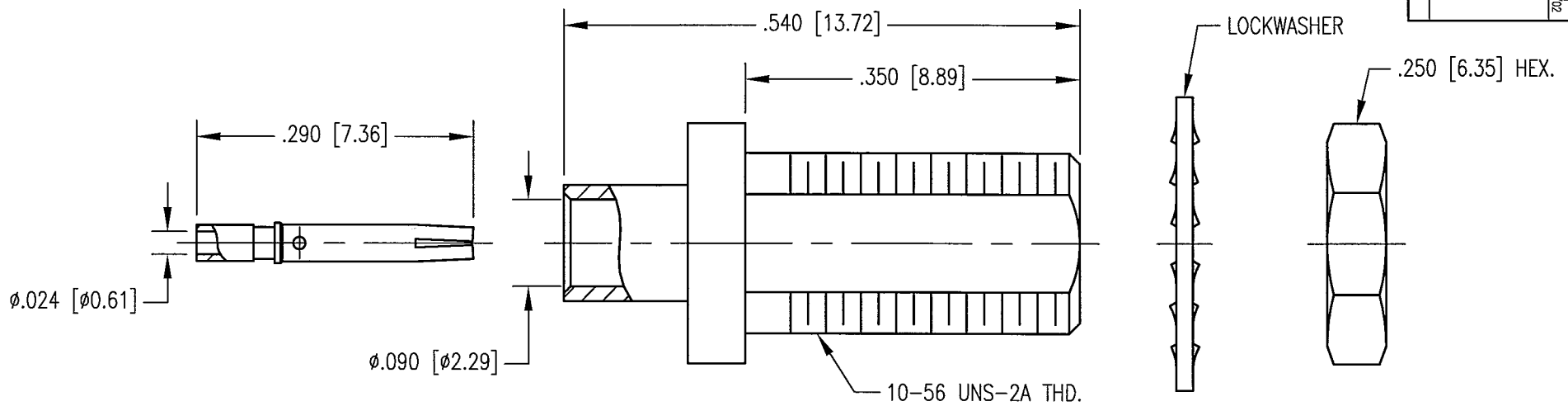


DWG. NO.		451-580-0850H	
REV	DESCRIPTION	BY	APPD
A	RELEASE PER ECR 7392	6/12/00 JMC	10/12/00 KJT



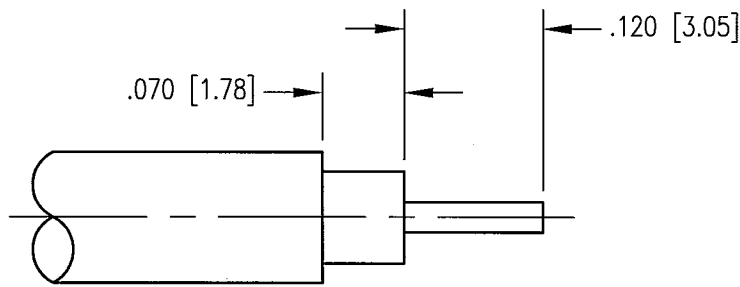
∅.024 [∅0.61]

∅.090 [∅2.29]

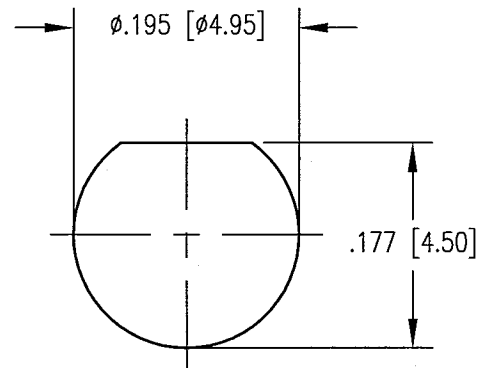
10-56 UNS-2A THD.

LOCKWASHER

.250 [6.35] HEX.



CABLE TRIMMING DIMENSIONS



RECOMMENDED MOUNTING HOLE

NOTES:

- MATERIALS:  
INSULATORS: TEFLON PER ASTM D1710  
CONTACT: COPPER ALLOY  
ALL OTHER METAL PARTS: BRASS PER ASTM B16
- FINISH:  
BODY: .000015 MIN. GOLD PER MIL-G-45204 OVER  
.000050 MIN. NICKEL PER QQ-N-290  
CONTACT: .000030 MIN. GOLD PER MIL-G-45204 OVER  
.000050 MIN. NICKEL PER QQ-N-290  
NUT AND LOCKWASHER: .000005 MIN. GOLD PER MIL-G-45204 OVER  
.000050 MIN. NICKEL PER QQ-N-290
- DESIGNED FOR USE WITH ∅.085 SEMI-RIGID CABLE.
- FOR CABLING PROCEDURE USE CAP 5-11 WITH TRIMMING DIMENSIONS SHOWN.

PER ASME Y14.5M-1994 UNLESS OTHERWISE SPECIFIED: DIMENSIONS ARE IN INCHES [MM]		<b>NORTHROP GRUMMAN</b>	
TOLERANCES: DECIMALS .XX ± .01 [0.254] .XXX ± .005 [0.127] ANGLES ± 2°		Winchester Electronics 400 Park Road Watertown, CT 06795	
SCALE: 6:1		TITLE	
<b>CUSTOMER DRAWING</b>		<b>MCX STRAIGHT JACK</b>	
DRAWN JWH	DATE 10/12/00	CHECKED JED	DATE 10/12/00
APPROVED JMC	DATE 10/12/00	APPROVED KJT	DATE 10/12/00
A		451-580-0850H	SHT. OF REV. 1 1 A