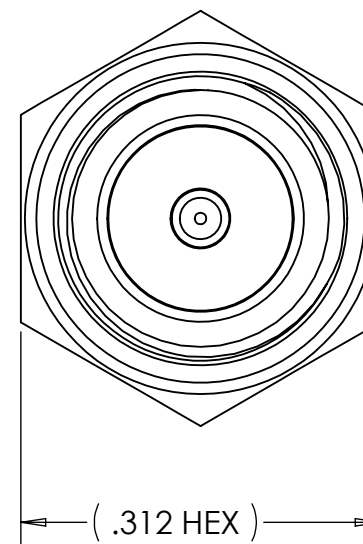
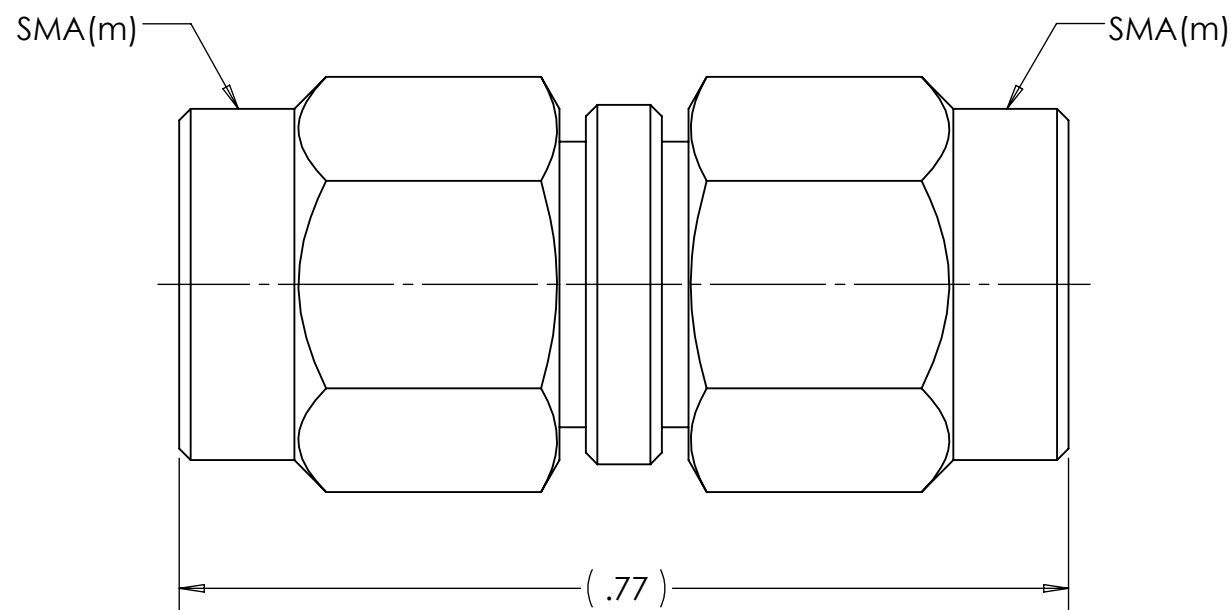
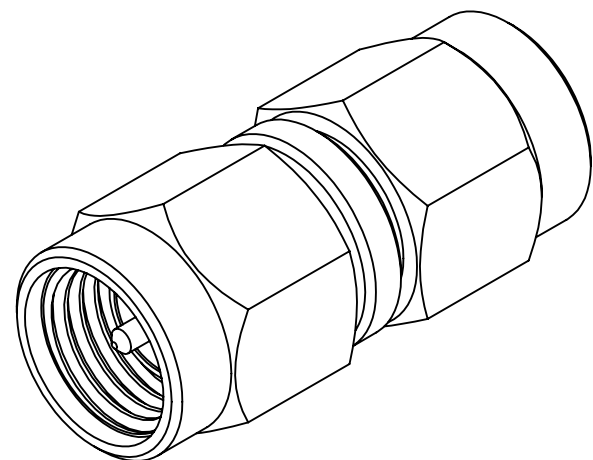


This document, including the design, configuration and mechanical features revealed herein are the sole, confidential and proprietary property of TRU Corporation. Reproduction or use thereof, in whole or part, is prohibited without the prior written consent of TRU Corporation.

REV.	DESCRIPTION	DATE	APPROVED
-	ORIGINAL ISSUE	07/14/15	AM



ENGINEERING DATA


ELECTRICAL:
 IMPEDANCE: 50 OHMS
 FREQUENCY RANGE: DC to 2500 MHz
 ELECTRICAL LENGTH: 63.3ps ± 1ps @1976MHz

MECHANICAL:
 INTERFACE: SMA(m) PER MIL-STD-348 FIG. 310-1

MATERIAL:
 CONTACT: BRASS
 INSULATOR: PTFE
 COUPLING NUTS & BODY: STAINLESS STEEL
 GASKET: SILICONE RUBBER

FINISH:
 CONTACT: GOLD PLATED
 COUPLING NUTS & BODY: PASSIVATED

NOTES:
 1. UNLESS OTHERWISE SPECIFIED; ALL DIMENSIONS ARE FOR REFERENCE ONLY.

MATERIAL	DO NOT SCALE DRAWING	DRAWN AM	DATE 07/13/15	 TRU Corporation 245 Lynnfield St, Peabody, MA 01960
	UNLESS OTHERWISE SPECIFIED: DIMENSIONS ARE IN INCHES	ENG APPR. AM	DATE 07/13/15	
COMMENTS:	TOLERANCES: FRACTIONS: ±1/64 .XX : ±.01 .XXX: ±.005 ANGLES: ±1/2° MACHINED SURFACES: 63/√	MFG APPR.	DATE	TITLE: CONNECTOR, COAXIAL SMA(m) to SMA(m) ADAPTER
		OTHER APPR.	DATE	
surface area: sq inch	weight: lbs	THIRD ANGLE PROJECTION		SIZE B DWG. NO. TRU-13021 REV -
				CAGE CODE: 92180 SCALE: 6:1 SHEET 1 OF 1