

# 20V CORDLESS HIGH VOLUME GREASE GUN

Item Number W7721

## OWNER'S MANUAL



Performance Tool®

**▲WARNING:** READ, UNDERSTAND AND FOLLOW ALL INSTRUCTIONS AND WARNINGS BEFORE OPERATING THIS TOOL. FAILURE TO DO SO MAY RESULT IN PERSONAL INJURY AND/OR PROPERTY DAMAGE AND WILL VOID WARRANTY.

**PT**<sup>®</sup>  
Performance Tool

## TOOL FEATURES

1. Shoulder Strap Anchor Loops
2. LED Light
3. 20V Motor
4. 4-Jaw Adjustable Coupler
5. Air Vent Valve
6. Pressure Release Valve
7. Trigger
8. Lock-Off Button
9. Variable Speed Dial
10. 48 in. Flexible Grease Hose
11. 16 oz. Barrel
12. Rubber Feet
13. Charger
14. 20V 2.0AH Li-Ion Battery
15. Shoulder Strap
16. Follower Handle



## SPECIFICATIONS:

Capacity:	14 oz. (397 g) cartridge/16 oz. (454 g) bulk
Pressure Rating:	10,000 PSI Max (690 Bar)
Max Flow Rate:	10 oz/min (283 g)
Inlet Size:	1/8 in. NPT-27
High-Pressure Hose:	48 in. (122 cm)
Voltage Rating:	20 Volts
Battery Type:	2.0Ah Li-Ion
Charge Time:	3 hrs.
Weight:	7.3 lb. (3.3 kg.)

Specifications are subject to change without notice.

## SAFETY GUIDELINES / DEFINITIONS

This instruction manual is intended for your benefit. Please read and follow the safety, installation, maintenance and troubleshooting steps described within to ensure your safety and satisfaction. The contents of this instruction manual are based upon the latest product information available at the time of publication. The manufacturer reserves the right to make product changes at any time without notice.

**▲WARNING:** Read and understand this entire instruction manual before attempting to assemble, install, operate or maintain this product. Failure to comply with the instructions may result in serious personal injury and/or property damage!

The following signal words are used to emphasize safety warnings that must be followed when using this product:

**▲DANGER:** Indicates an imminently hazardous situation that, if not avoided, WILL result in death or serious injury.

**▲CAUTION:** Indicates a potentially hazardous situation that, if not avoided, MAY result in minor or moderate injury.

**▲WARNING:** Indicates a potentially hazardous situation that, if not avoided, COULD result in death or serious injury.

**▲NOTE:** Indicates important information, which if not followed, MAY cause damage to equipment.

## UNPACKING AND INSPECTION

After opening the carton, unpack your new product and related parts and accessories. Please inspect it carefully for any damage that may have occurred during transit. Please check it against the photograph on carton. If any parts are missing, please call customer service at 1-800-497-0552 between 6 a.m. and 5 p.m. Pacific time.

**▲WARNING:** DO NOT operate this product if damaged during shipment, handling or misuse. Do not operate the product until the parts have been replaced or the fault rectified. Failure to do so may result in serious personal injury or property damage. All damaged parts must be repaired or replaced as needed prior to operating this product. Check to see that all nuts, bolts and fittings are secure before putting this product into service.

If you have any questions, or require assistance with damaged or missing parts, please contact our customer service department at 1-800-497-0552. Please have the serial number, model number, and date of purchase available for reference when calling.

## GENERAL SAFETY

**▲WARNING:** The warnings, cautions, and instructions discussed in this instruction manual cannot cover all possible conditions and situations that may occur. It must be understood by the operator that common sense and caution are factors which cannot be built into this product, but must be supplied by the operator. Read and understand all of the instructions provided in the instruction manual of this product, as well as, any other tool (s) used with this product.

- Keep the area clean and well lit. Cluttered or dark areas can cause accidents.
- Be aware of what you are doing and use common sense while using the tool. Do not use a tool when you are tired or under the influence of drugs, alcohol or medication. A moment of distraction while using a tool can cause serious personal injury.
- Use safety equipment. Always wear eye protection. Safety equipment such as dust masks, non-slip safety shoes, helmets or ear protection used in appropriate conditions will reduce the risk of injury.
- Do not rush. Maintain proper footing and balance at all times. This allows better control of the tool in unexpected situations.
- Dress appropriately. Do not wear loose clothing or jewelry. Keep hair, clothing and gloves away from moving parts. Loose clothing, jewelry or long hair can get caught in moving parts.
- Keep the tool away from children and do not allow tool to be used by people who are not familiar with the operation of the tool. Tools are dangerous in the hands of inexperienced operators.
- Never use a tool other than for its intended purpose.

## POWER TOOL SAFETY

**WARNING!** The grease gun can develop high pressure, up to 10,000 PSI. Use safety glasses and gloves for protection during operation. Keep hands clear of the exposed rubber portions of the hose. Replace hose if there is any sign of damage or excess wear.

**WARNING!** Extreme pressure may cause the nozzle extension or flex hose to burst. Use only approved hoses and follow whip instructions and warnings

- Always wear fuel and oil-resistant gloves when working with fluids.

- Do not store the tool under extreme conditions.
- Do not adapt the tool for any other purpose than what it was originally intended for.
- When operating the tool, use proper eye and hearing protection as well as protective gloves.
- To maintain complete control, firmly hold your tool with both hands.
- Never point the tool towards yourself.
- Never force the tool. Excessive pressure could bend or break the tool or accessory, resulting in damage to the tool, your work piece or serious personal injury.
- Do not use the battery charger in damp or wet locations. Do not use the grease gun or charger if it has been dropped, damaged, left outdoors, or immersed in liquid. To avoid electrical shock, do not handle the charger, its power cord plug or the grease gun with wet hands.
- Remove adjusting keys or wrenches before turning the tool on. A wrench or key that is left attached may result in personal injury.
- Disconnect the battery pack before changing accessories or before storing the tool. These preventive safety measures reduce the risk of accidental starting of the tool.
- Protect yourself against electric shocks when working on electrical equipment. Avoid body contact with grounded surfaces such as pipes, radiators, cooking stoves and refrigerators. There is an increased chance of electrical shock if your body is grounded.

## BATTERY SAFETY INFORMATION

**▲WARNING!** *Never burn batteries, as they can explode in a fire. Do not charge leaking batteries. Only a qualified service technician should perform maintenance on the battery pack. Contact local solid waste authorities for instructions on correct disposal or recycling of the battery pack.*

- A battery operated tool with internal batteries or a separate battery pack must only be powered by the included battery. Do not, for instance, mix different brands of tools and batteries or use adapters to allow you to use a battery pack with a different voltage. Using another battery pack could cause a fire.
- Batteries must only be recharged with the included charger. A charger that may be suitable for one type of battery could cause a fire when used with another battery.
- Set the tool's trigger switch to the OFF position before installing or removing the battery pack. This will prevent injury due to accidental starts.
- Do not use the battery charger in damp or wet locations.
- Do not store battery packs in containers / spaces with loose metal objects. Battery pack terminals could be short circuited if they come into contact with metal objects. In addition to damaging the battery pack, you increase the risk of a fire.
- Do not store the tool and/or battery pack in locations where the temperature may reach or exceed 113°F/45°C (such as the trunk of a car, outside sheds or metal buildings in summer).

## OPERATION

**NOTICE:** *Before using your tool for the first time, discharge the battery pack and then recharge the battery pack completely.*

### CHARGING THE BATTERY

1. Remove the battery pack (14) from the tool by pressing the battery release button and sliding the battery pack out of the tool handle.
2. Plug in the charger (13), after checking if the power voltage on the charger's rating plate corresponds to the voltage available.
3. Plug charger's power lead into back of battery. The red LED on the charger indicates that the battery is charging. Once charged, the red LED will change to green.
4. During charging, it is normal for the battery to warm slightly. If you can not charge the battery, check the following:
  - Does the socket have voltage.
  - Are the charger contacts reliable.
  - Verify there is no damage to the charging cord.

**NOTE:** *Battery temperatures will increase during and shortly after use. Batteries may not accept a full charge if they are charged immediately after use. For best results, allow the battery pack to cool to room temperature before charging.*

## LED WORKLIGHT

**CAUTION:** Do not stare into LED light, serious eye injury could result.

There is an LED light (2) located on the front of the grease gun. The LED light is activated when the trigger (7) is squeezed and will shut off 5 seconds after the trigger is released.

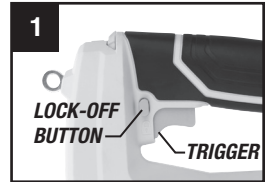
**NOTE:** The LED light is intended for lighting the immediate work surface and is not intended to be used as a flashlight.

## LOCK-OFF BUTTON AND TRIGGER SWITCH (Fig. 1)

The grease gun is equipped with a lock-off button (8). To lock the trigger, press the lock-off button to the right. Always lock the trigger when carrying or storing the tool to eliminate unintentional starting.

To unlock the trigger, press the lock-off button to the left. Squeeze the trigger to turn the motor (3) ON. Releasing the trigger turns the motor OFF.

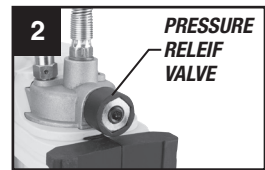
**▲WARNING!** This tool has no option to lock the switch in the ON position, and should never be locked ON by any other means.



## PRESSURE RELIEF VALVE (FIG. 2)

The pressure relief valve (6) is set at the factory to relieve pressure above 10,000 psi (690 bar). Grease coming out of the pressure relief valve indicates a clog in the fitting, line or bearing. Any of these conditions must be corrected before proceeding.

**▲WARNING!** The grease gun may generate high pressure. Do not remove or tamper with the pressure relief valve, serious injury may occur.



## INSTALLING AND REMOVING THE BATTERY PACK (FIG. 3)

**NOTE:** For best results, make sure the battery pack is fully charged.

To install the battery pack, align the battery pack with the rails inside the tool's handle and slide it into the handle until the battery pack is firmly seated in the tool and ensure that it does not disengage.

To remove the battery pack from the tool, press the release button and firmly pull the battery pack out of the tool handle.



## INSTALLING GREASE CARTRIDGE

1. Pull back on the follower handle (16) until the follower rod is fully extended and latch the follower rod groove into the slot on the barrel end cap of the grease barrel assembly.
2. Unscrew the grease barrel assembly from the grease gun.
3. Remove the plastic cap from the grease cartridge, then insert the cartridge, open end first, into the grease barrel assembly.
4. Remove the pull-tab seal from the other end of the grease cartridge.
5. Thread the grease barrel assembly back into the grease gun and screw it in securely.
6. Release the follower rod by depressing the follower key and pushing the follower rod forward into the grease barrel assembly. Purge air from the pump (refer to Purging Air Pockets, page 6).

**NOTE:** It may be necessary to loosen the grease barrel assembly in order to break the vacuum seal.

## CONVERTING GREASE GUN TO ALLOW FILLING FROM BULK CONTAINER OR FILLER PUMP

1. Unscrew the grease barrel cap from the grease barrel assembly. Pull on the follower handle to extract the follower and spring from the grease barrel assembly.
2. Grasp the follower between your thumb and forefinger and flip the follower lip from the rear to the front side.

**NOTE:** The follower resembles a cup. When the gun is assembled for use with bulk lubricant, the cup opens toward the pump assembly.

3. Reassemble the follower into the grease barrel assembly and position with the follower handle so that the grease barrel assembly cap can be tightened onto the barrel.

## OPERATION

### FILLING GREASE GUN FROM A BULK CONTAINER

1. Rotate the grease barrel assembly counterclockwise to unscrew the grease barrel assembly from the gun.
2. Insert the open end of the grease barrel assembly into the lubricant. Slowly pull the follower handle back while pushing the grease barrel assembly deeper into the lubricant to prevent air pockets from being pulled into the grease barrel assembly.
3. When the follower rod is fully extended (approximately 8 in. or 20 cm), the grease barrel assembly is full. Release the follower key to hold the follower rod in its extended position.
4. Screw the grease barrel assembly clockwise into the gun. To release the follower rod, depress the follower key and push the follower rod forward into the grease barrel assembly. Purge the air from the pump. See the section To Re-prime.
5. Clean any excess grease from the gun body.

### FILLING GREASE GUN WITH A FILLER PUMP

A bulk filler fitting (sold separately) will need to be installed in the grease gun head cap. Replace the pipe plug in the head cap with the bulk loader fitting. Engage the follower rod with the follower by rotating the follower handle. Insert the gun filler nipple into the fill pump socket. Operate the filler pump to fill the container. When the follower rod groove is exposed, the grease tube assembly is filled. The follower rod will be extended approximately 8 in. (20 cm). Disengage the follower rod from the follower by rotating the follower handle. Push the follower rod into the grease barrel assembly.

### OPERATING GREASE GUN

**▲WARNING:** *To reduce the risk of serious personal injury, turn tool off and remove the battery pack before making any adjustments or removing/installing attachments or accessories. An accidental start-up can cause injury. Do not use the tool if the trigger does not function properly. Any tool that cannot be controlled with the trigger is dangerous and must be repaired or replaced.*

1. Fully insert the charged battery pack into the grease gun.
2. Connect the high-pressure hose coupler to the grease fitting, and ensure that the coupler is squarely seated on the fitting.
3. Rotate the variable speed dial to the desired setting for the application. Speed 1 is the lowest speed/flow rate setting and speed 5 is the highest speed/flow rate setting.
3. Squeeze the trigger to activate the grease gun. Grease should now be dispensed through the high-pressure hose coupler and into the grease fitting.
4. When you have finished applying grease, release the trigger and remove the high-pressure hose coupler from the grease fitting by pulling it sideways.

**▲WARNING!** *Do not adjust the pressure relief valve. If backpressure in the high-pressure hose exceeds the factory's preset pressure rating, grease will be discharged through the pressure relief valve to prevent motor overload and to limit grease pressure within the hose.*

### PURGING AIR POCKETS

**NOTE:** *Air pockets in the grease can cause the grease gun to lose prime. Eliminate air pockets after each refill or if the grease gun fails to pump grease.*

1. Withdraw the follower rod from the grease barrel assembly, and firmly push the follower rod back into the grease barrel assembly.
2. Squeeze the trigger in short bursts until all air pockets are expelled.
3. If step 2 fails to re-prime the gun, unscrew the grease barrel assembly 1-1/2 turns.
4. Push the follower handle into the grease barrel assembly until lubricant is released from the grease barrel assembly at the point where it screws into the pump housing.
5. Tighten the grease barrel assembly and remove excess grease from the exterior of the gun.

**NOTE:** *This tool has been tested at the factory, which may result in a small amount of grease left in the grease tube and hose assembly. It is recommended to purge the tool with the brand of grease to be used before first use.*

## REMOVING EMPTY GREASE CARTRIDGE

1. Pull back on the follower handle until the follower rod is fully extended and latch the follower rod groove into the slot on the barrel end cap of the grease barrel assembly.
2. Rotate the grease barrel assembly counterclockwise to unscrew the grease barrel assembly from the gun.
3. Carefully release the follower handle to eject the empty cartridge from the barrel assembly.

## OPTIONAL SHOULDER STRAP

Attach the optional shoulder strap (15) using both anchor loops (1) for a well balanced way to carry your grease gun during operation.

## CARE AND MAINTENANCE

For your safety, maintenance should be performed regularly.

1. Make sure the trigger switch is in the locked position using the lock-off button and the battery is removed from the grease gun, and the charger is unplugged from the electrical outlet before performing any inspection, maintenance, or cleaning.
2. Check the general condition of the grease gun before each use. Check for misaligned or binding moving parts, cracked or broken parts, leaking battery packs, damaged hoses, and any other conditions that may affect the safe operation of the grease gun. If abnormal noise or vibration occurs, have the problem corrected before further use. Do not use damaged equipment. Replace worn parts.
3. Daily maintenance: Use a soft, dry cloth to remove all dirt, grease, and debris from the exterior of the grease gun. Do not use solvents to clean the grease gun.
4. Use only identical replacement parts from PERFORMANCE TOOLS® when servicing, failure to do so can lead to accidents for the operator and the use of any other parts will void the warranty. Only use accessories that are intended for use with this tool and that are recommended by the manufacturer for your model. Approved accessories are available from Performance Tool®. Accessories that may be suitable for one tool may become hazardous when used on another tool.
5. If repairs are required, bring your tool to an authorized service center.

## STORAGE

When storing, always remove the battery pack from the grease gun. Keep the grease gun and its accessories in a clean, dry location and out of the reach of children.

## DISPOSING OF THE TOOL

1. If your tool has become damaged beyond repair, do not throw it out. Bring it to the appropriate recycling facility.
2. Do not incinerate battery packs. Battery packs may explode when exposed to high heat.

## TROUBLE SHOOTING

<b>Problem:</b>	<b>Possible cause:</b>	<b>Solution:</b>
Motor does not run .....	Battery discharged. Faulty wiring.	Recharge the battery. Take gun to a qualified service center.
Pressure relief valve remains open.....	Blockage in the line or the grease fitting.	Check the hose and grease fitting. Remove and clean.
Gun does not dispense grease	Grease tube is empty. Air in the pump.	Refill the grease tube. Purge air pockets or re-prime gun.
Continuous loss of prime .....	Air pockets. Plunger is binding in the grease tube assembly. Worn or faulty pump piston.	Empty the grease tube assembly, refill, and re-prime.  Take gun to a qualified service center.

# TROUBLE SHOOTING

Problem:	Possible cause:	Solution:
Coupler won't fit or stay on the grease fitting.....	Grease couplers jaws are threaded closed.	The coupler has adjustable jaws. Twist nose of coupler, this will open and close the 4 internal jaws.
When gun is operated grease escapes from around the fitting and/or coupler.....	Either fitting is plugged with solidified grease, or coupler is not tight enough on fitting.	Coupler is adjustable, slight turn of the nose opens the jaws. Turn the nose the opposite direction to firm up the connection. Positive pressure will ensure grease enters grease fitting, and coupler won't detach. Done correctly this can clear out any solidified grease without needing to clean fitting.



*NOTE: Twist coupler head to open and close the jaws, to fit different sizes of fittings.*

## LIMITED WARRANTY

PERFORMANCE TOOL® extends only the following warranties, and only to original retail purchasers. These warranties give specific legal rights. Except where prohibited by local law, the law of the State of Washington governs all warranties and all exclusions and limitations of warranties and remedies. There may be other rights which vary from state to state.

PERFORMANCE TOOL® warrants the product to be free from defects in materials and workmanship under normal use and service. A defective product may be returned for a free replacement within 90 days from the date of purchase, provided that product is returned to place of purchase immediately after discovery of defect. After 90 days PERFORMANCE TOOL® will replace at no charge any parts which our examination shall disclose to be defective and under warranty. These warranties shall be valid only when a sales receipt showing the date of purchase accompanies the defective product or defective part (s) being returned. For part (s) after 90 days, please remit your request, postage prepaid to:

PERFORMANCE TOOL, P.O. Box 88259 Tukwila, WA 98138

These warranties exclude blades, bits, punches, dies, bulbs, fuses, hoses, and other consumables which must be replaced under normal use and service. These warranties shall not apply to any product or part which is used for a purpose for which it is not designed, or which has been repaired or altered in any way so as to affect adversely its performance or reliability, nor shall these warranties apply to any product or part which has been subject to misuse, neglect, accident or wear and tear incident to normal use and service.

PERFORMANCE TOOL® does not authorize any other person to make any warranty or to assume any liability in connection with its products.

Except for warranties of title and the limited express warranties set forth above, PERFORMANCE TOOL® makes no express or implied warranties of any kind with respect to its products. In particular, PERFORMANCE TOOL® makes no implied warranty of merchantability and no implied warranty of fitness for any particular purpose, except that for goods purchased primarily for personal, family or household use and not for commercial or business use, PERFORMANCE TOOL® makes an implied warranty of merchantability (and, if otherwise applicable, an implied warranty of fitness for a particular purpose), but only for the particular qualities or characteristics, and for the duration, expressly warranted above.

The laws on limitation of implied warranties may differ from state to state, so the above limitations may not apply in all cases.

PERFORMANCE TOOL® shall not be liable for consequential, incidental or special damages resulting from or in any manner related to any product, or to the design, use, or any inability to use the product. The sole and exclusive remedy for a defective product or part shall be the repair, or replacement thereof as provided above. The laws on limitation of remedies or on consequential, incidental or special damages may vary from state to state, so the above limitations may not apply in all cases.