

# DLR4-5-FRAME

## New Construction Frame for DLR4v5 Trim

### Product Description

The DLR4-5-FRAME is designed to lower the overall system cost of installing the DLR4v5 in new construction applications and is suitable for use in residential and commercial applications.

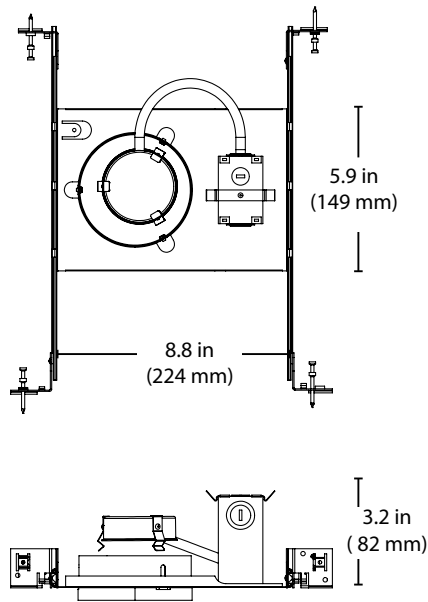
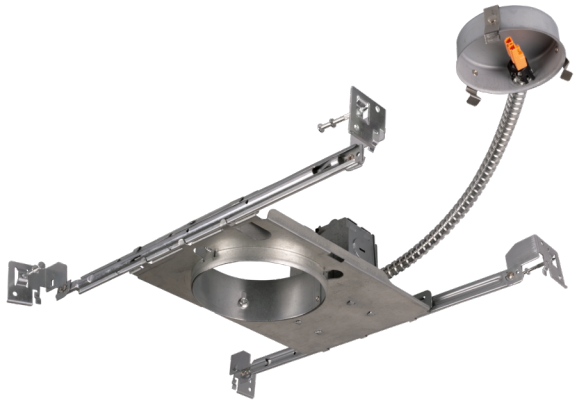
#### Construction



- Listed for through branch circuit wiring and includes three 1/2" knockouts.
- Four pry-outs with integral strain relief simplify Romex installation
- Friction clip sleeve for easy installation of DLR4v5 trim
- Supplied with three push-in wire connectors
- Patented trim attachment system with IDEAL connector
- Rated for Insulation Contact
- Air tight when used with DLR4v5 downlight

#### Hanger Bars

- Heavy-gauge NICOR captive hanger bars provide greater stability, allowing housing to be positioned at any point within a 24" joist span, then locked in place with set screws
- Swivel foot on one end of hanger bars ease single person installation
- Unique hanger bar lip design helps align can to joist
- Four double-headed captive nails provide for ease of installation
- Bars can be repositioned 90° on plaster frame by repositioning hanger bar brackets
- Bars fit onto T-bar spine for quick alignment and can be permanently secured
- Score lines allow bars to be shortened without tools to accommodate a 12" joist span

Date \_\_\_\_\_





\*when used with DLR4 downlight

Patent Pending

Ordering Information		Example: DLR4-5-FRAME
Series	Description	
DLR4-5-FRAME	DLR4-5 New Construction Frame	

Specifications and dimensions subject to change without notice.

