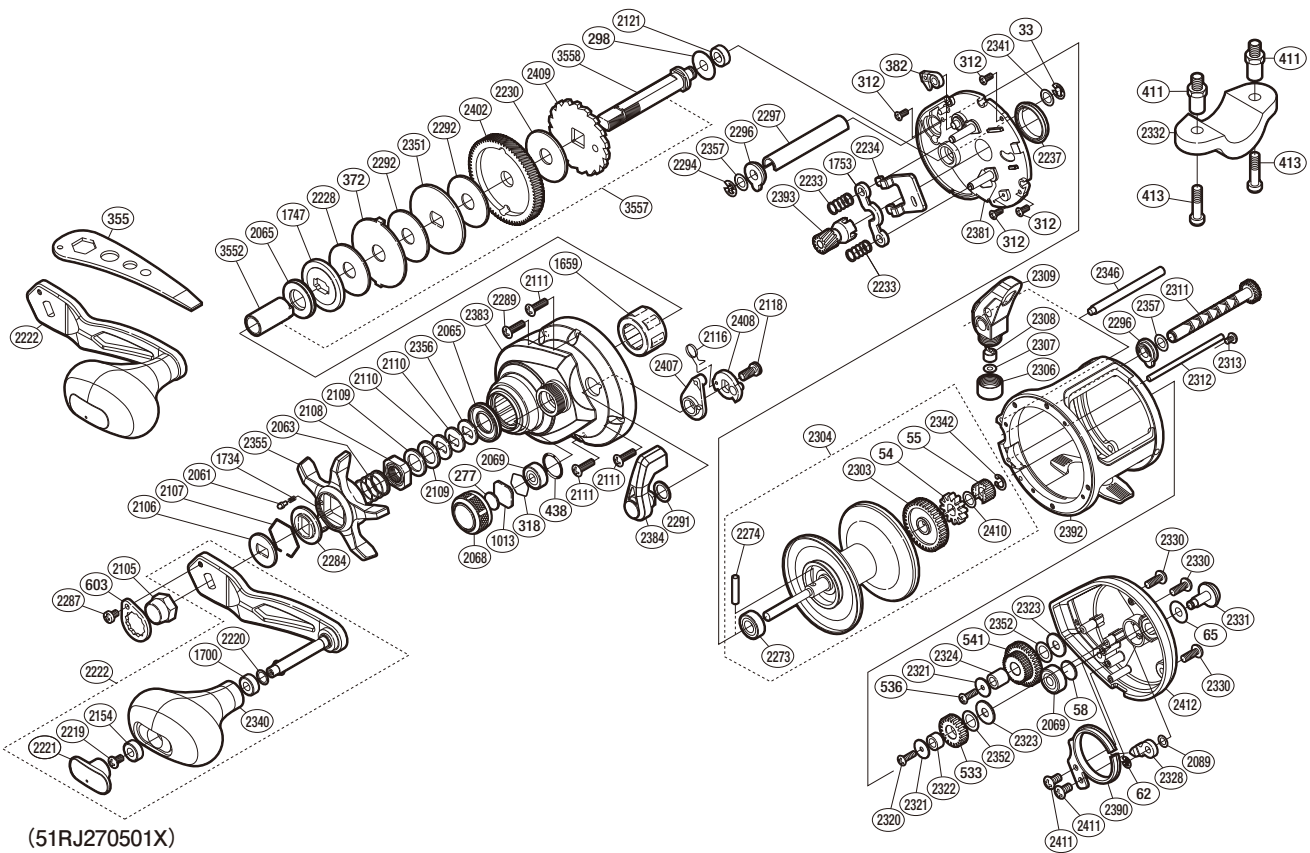


SHIMANO

TEKOTA

TEK501HGA



(51RJ270501X)

#	Part No.	Description	#	Part No.	Description	#	Part No.	Description
33	105NG	E Lock	2116	10R00	Clutch Spring	2324	1026K	Idle Gear D Support
54	104EX	Click Gear	2118	10MFB	Screw	2328	10T84	Click Pawl
55	10J7E	Idle Gear A	2121	10MAT	Drive Shaft Bushing	2330	10L6D	Screw
58	10GEU	Spacer B	2154	10EU0	Handle Knob Bushing A	2331	100GQ	Click Button
62	105NK	E Lock	2219	10LFA	Screw	2340	10T8A	Handle Knob Assembly
65	104H2	Spacer A	2220	10HEP	Washer	2341	10T89	Washer
277	10896	Cast Control Spacer	2221	101B8	Handle Knob Seal	2342	10KHN	Idle Gear Retainer
298	10588	Washer	2222	10DHY	Handle Assembly	2346	100D1	Stabilizer Bar A
312	10MPP	Screw	2228	101BA	Drag Washer D	2351	101KH	Key Washer C
318	10GGM	Bearing Retainer	2230	1025A	Drag Washer A	2352	10AG4	Washer
372	10KQH	Eared Washer E	2233	101MH	Yoke Spring	2355	10176	Star Drag
382	10MW8	Anti-Reverse Pawl	2234	10DJC	Yoke Plate	2356	109F5	Washer
438	108WK	O Ring	2237	101B3	Frame Center Seal	2357	101V7	Washer
533	10NXF	Idle Gear B	2273	108PE	Ball Bearing	2381	10RXZ	Left Side Plate Set Assembly
536	103BY	Screw	2274	10MGR	Spool Clutch Pin	2383	10ECH	Left Side Plate Assembly
541	10NXK	Idle Gear D	2284	10J26	Star Drag Click Plate	2384	10ECJ	Clutch Lever Unit
603	10LMC	Handle Nut Plate	2287	10LLU	Screw	2390	10SBP	Click Spring
1013	1085F	Spool Tension Spacer	2289	10L6A	Screw	2392	10SC1	Frame
1659	10F37	Roller Clutch Bearing	2291	10272	Smoother	2393	100ZH	Pinion Gear
1700	104UJ	Handle Knob Bushing	2292	1025L	Drag Washer B	2402	100ZF	Drive Gear
1734	10BT2	Click Spring	2294	10KHG	E Lock	2407	10L2C	Eccentric Cam Bushing
1747	10D56	Pressure Plate	2296	100GP	Worm Bushing A	2408	10874	Clutch Cam Assembly
1753	10484	Yoke	2297	100H4	Level Wind Guard	2410	10S0Q	Washer
2061	10MFC	Click Pin B	2303	100H9	Counter Gear A	2411	10LFM	Screw
2063	10A70	Star Drag Spring	2304	10T86	Spool Assembly	2412	10SVP	Right Side Plate
2065	10C69	Roller Clutch Water Proof	2306	100GB	Pawl Cap	2444	10DAS	Anti-Reverse Ratchet
2068	10JWV	Cast Control Cap	2307	10TAT	Washer	3552	10DH4	Roller Clutch Inner Tube
2069	10KAF	Ball Bearing	2308	10BHQ	Line Guide Pawl	3557	10RV8	Drive Shaft Inner Tube Set
2089	10GHP	Washer	2309	100GM	Line Guide Pawl Holder Assembly	3558	10DH5	Drive Shaft
2105	10R3C	Handle Nut	2311	10T83	Worm Shaft Unit			
2106	107QN	Drive Shaft Shield	2312	10T85	Stabilizer Bar B	411	1046R	Rod Clamp Nut (Accessory)
2107	10KXW	Click Plate Retainer	2313	10MPD	Screw	413	10A7C	Rod Clamp Bolt (Accessory)
2108	10R3H	Star Drag Nut	2320	10LCP	Screw	2332	10EUN	Rod Clamp (Accessory)
2109	10J1P	Star Drag Spacer	2321	10DT6	Idle Gear B Spacer B			
2110	109LA	Coned Disc Spring 8h	2322	101JJ	Idle Gear B Support			
2111	10L6L	Screw	2323	101JK	Idle Gear B Spacer A	355	13X98	Wrench (Accessory)

Please note that the number of adjusting washers may not be the same as shown in the exploded views.
(Adjustment will vary with each individual product.)

(230713)_007