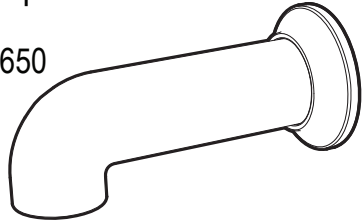


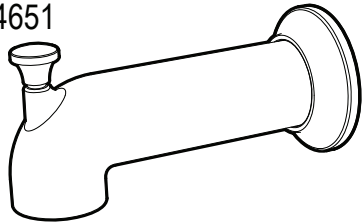
INSTALLATION INSTRUCTIONS

Tub Spouts

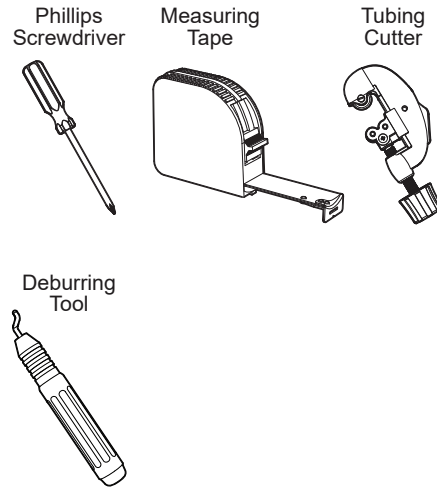
SA-4650



SA-4651

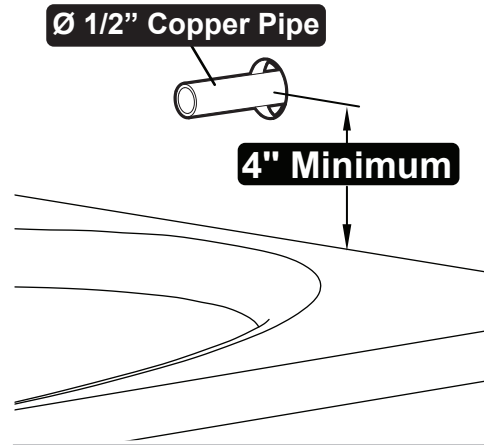


TOOLS AND SUPPLIES



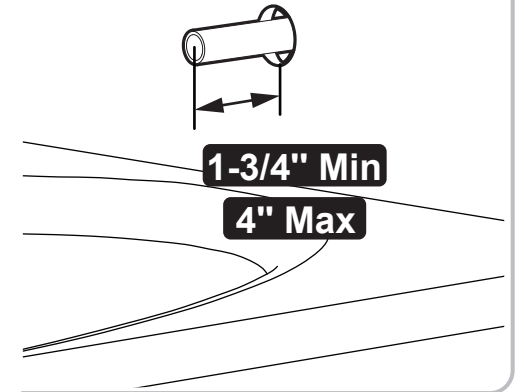
VERIFY MOUNTING LOCATION

- 1 The minimum distance between the center of the tub spout and the rim of the tub should be no less than 4".



VERIFY MOUNTING LOCATION

- 2 The stub out for the 1/2" copper pipe should extend a minimum of 1.75" from the wall, but not to exceed 4" from wall. Remove all burrs and sharp edges from the stub out 1/2" copper pipe.



IMPORTANT

Be sure to read and understand all instructions before beginning installation.

Cover the drain to avoid loss of parts.

Be sure to wear proper eye protection.

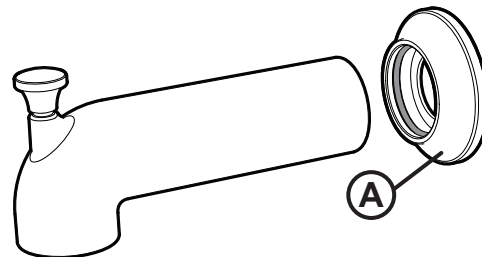
Do NOT over tighten any connections or damage may occur.

Your new Speakman Product is designed for years of trouble-free performance. Keep it looking new by cleaning it periodically with a soft cloth. The use of harsh chemicals and abrasives on any of the Speakman custom finish products may damage the finish and void the product warranty. Please be sure to only use approved cleaners. Please contact Speakman for any clarification of acceptable cleaners.

Visit www.speakman.com for warranty information.

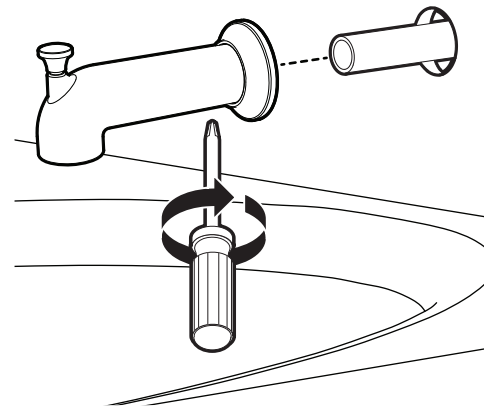
OPTIONAL TWO-TONE

- 3 This Tub Spout has the capability of becoming a two-tone product. To change out the Finish Sleeve (A), simply slide off and replace with the Sleeve of an optional finish. Ensure O-Ring is properly installed within the Finish Sleeve

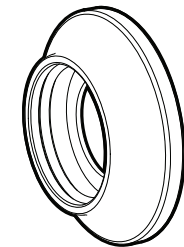


INSTALL TUB SPOUT

- 4 Slide Spout over exposed stub out pipe until flush to wall. Center the Spout on the wall and tighten Set Screw from underneath with a Phillips Screwdriver.

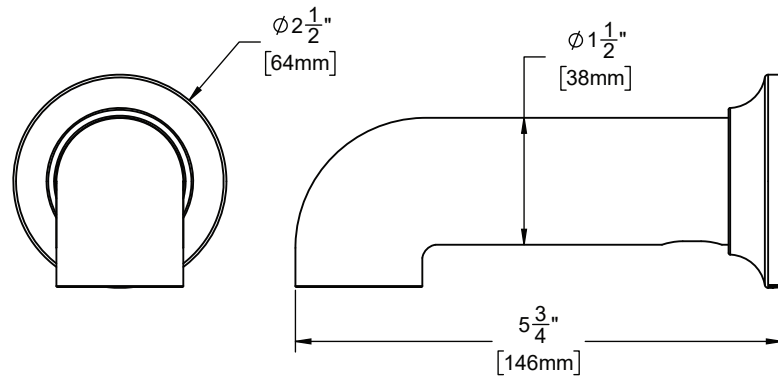


REPAIR PARTS

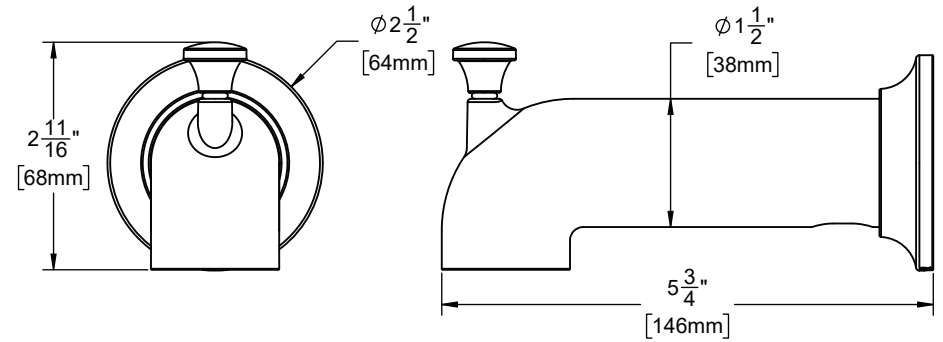


A-TS-XX
FINISH SLEEVE
(XX = FINISH)

ROUGH IN DIAGRAM



S-4650



S-4651

