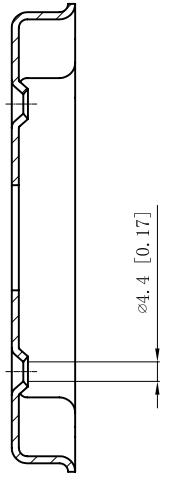
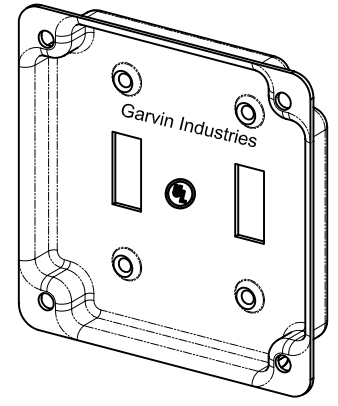
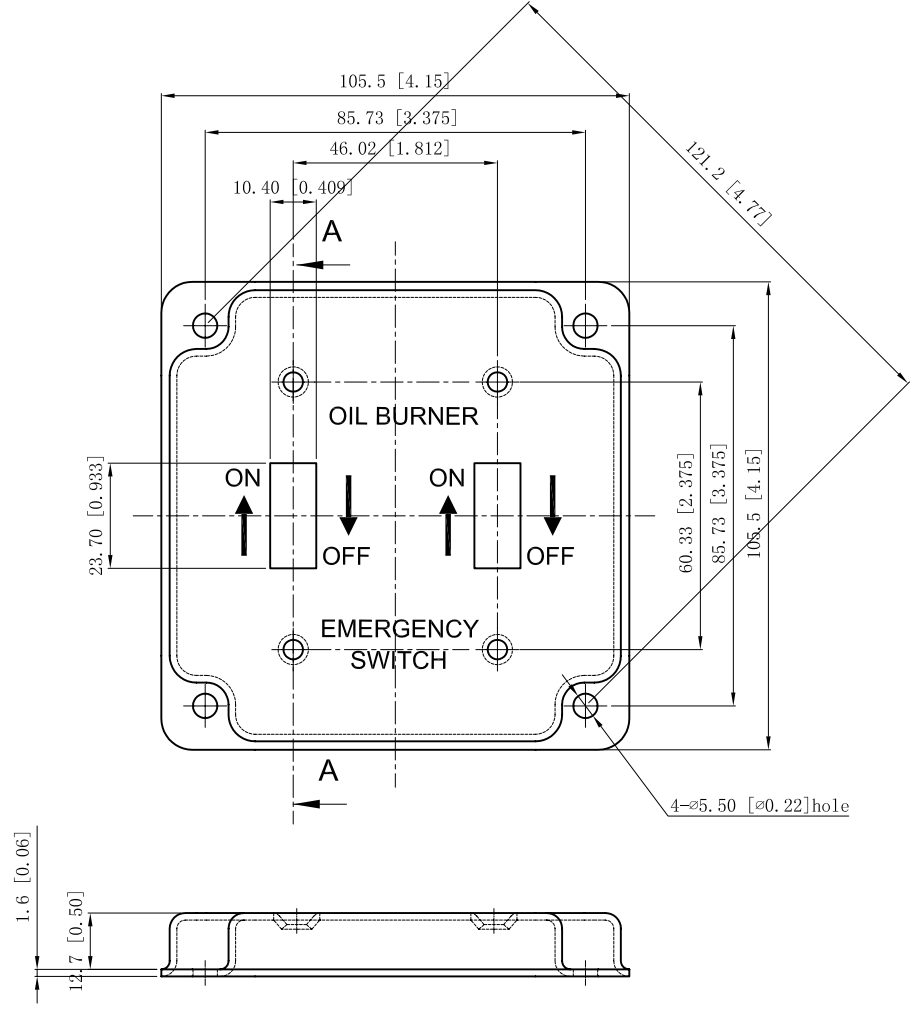


SIDES	BOTTOM
2 PCS 6-32X5/16 Screws Pack In Poly-bag Separately	
Material:Steel-0.0625"-C.R.S Powder Coating Red	



VIEW A



DESCRIPTION
TRADE REFERENCE TERMS

This data sheet is for reference only .GARVIN INDUSTRIES reserves the right to make changes to the design without prior notice.

STANDARD PACKING	<b>GARVIN INDUSTRIES</b>		
	TITLE 4" SQUARE RED EMERGENCY OIL BURNER SWITCH PLATE. 2-TOGGLE WITH ON/OFF		
25/100 PCS	SIZE	DWG NO.	REV
	A4	BPO-1936	A
DATA SHEET			