

This document, including the design, configuration and mechanical features revealed herein are the sole, confidential and proprietary property of TRU Corporation. Reproduction or use thereof, in whole or part, is prohibited without the prior written consent of TRU Corporation.

REV.	DESCRIPTION	DATE	APPROVED
-	ORIGINAL ISSUE	04/06/10	AM
A	CHANGE PER ECO 3849	04/09/10	AM

## ENGINEERING DATA

### ELECTRICAL:

FREQUENCY RANGE: DC to 3GHz  
IMPEDANCE: 50 OHMS NOMINAL  
VOLTAGE RATING: 500 VOLTS RMS  
INSULATION RESISTANCE: 5,000 MEGOHMS MIN  
VSWR MAX: 1.25:1  
INSERTION LOSS MAX: 0.2 dB  
POWER HANDLING: 1,000 W CW

### MECHANICAL:

INTERFACE: SC(f) PER MIL-STD-348 FIG. 309.2  
LT(f) PER MIL-STD-348 FIG. 318.2  
MATING CHARACTERISTICS: PER MIL-STD-348  
AXIAL TORQUE: 250 IN-LB (APPLIED AT FLANGE AND LT(f))  
STATIC LOAD: 250 LB (APPLIED AT FLANGE AND LT(f))  
DURABILITY: 500 MATING CYCLES @ 12 CYCLES PER MIN. MAX

### ENVIRONMENTAL:

TEMPERATURE RANGE: -54 to 95 °C (NON-OPERATING)  
-54 to 85 °C (OPERATING)

VIBRATION: MIL-STD-202, METHOD 204, CONDITION B  
SHOCK: MIL-STD-202, METHOD 213, CONDITION I  
MOISTURE RESISTANCE: MIL-STD-202, METHOD 106  
CORROSION: MIL-STD-202, METHOD 101, CONDITION B

### MATERIALS:

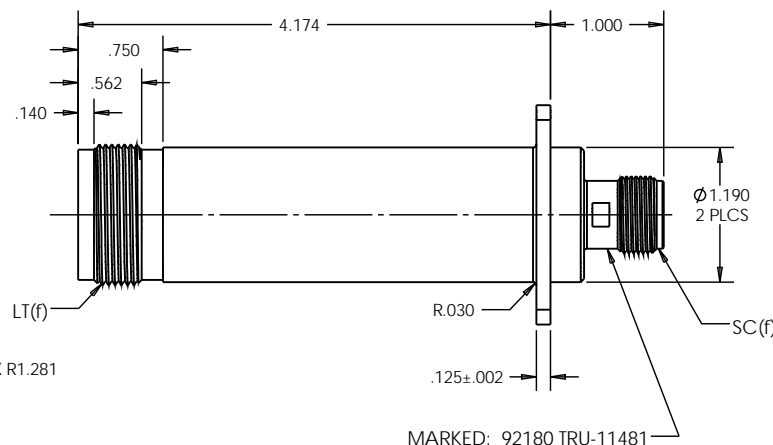
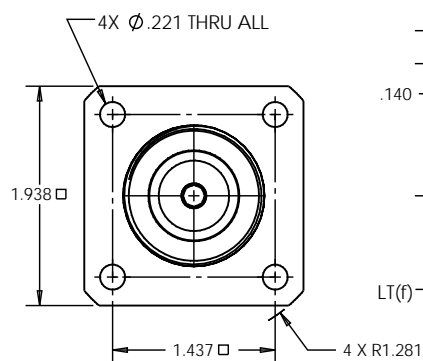
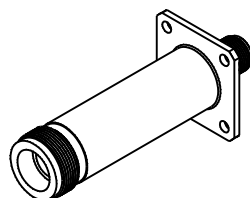
CENTER CONTACTS: BERYLLIUM COPPER  
OUTER CONTACTS/BODIES: BRASS  
INSULATORS: PTFE  
O-RINGS: SILICONE RUBBER

### FINISH:


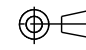
CENTER CONTACTS: SILVER PLATED  
OUTER CONTACTS/BODIES: SILVER PLATED

### NOTES:

1. AETHERCOMM P/N 70110-001



MARKED: 92180 TRU-11481

MATERIAL	DO NOT SCALE DRAWING	DRAWN mcampiglio	DATE 04/05/10	 <b>TRU CORPORATION</b> 245 LYNNFIELD STREET, PEABODY, MA 01980 <i>The Custom Interconnect Leader™</i>		
	UNLESS OTHERWISE SPECIFIED: DIMENSIONS ARE IN INCHES	ENG APPR. AM	DATE 04/06/10			
COMMENTS:	TOLERANCES: FRACTIONS: $\pm 1/64$ XX: $\pm .01$ XXX: $\pm .005$ ANGLES: $\pm 1/2^\circ$ MACHINED SURFACES: $\sqrt{63}$	MFG APPR.	DATE	TITLE: CONNECTOR, COAXIAL LT(f) to SC(f) ADAPTER		
	surface area: sq inch	weight: lbs	OTHER APPR.		DATE	
		THIRD ANGLE PROJECTION 		SIZE <b>B</b>	DWG. NO. TRU-11481	REV <b>A</b>
				CAGE CODE: 92180	SCALE: 1:1	SHEET 1 OF 1