



ELECTRIC REPLACEMENT PARTS LIST
Residential Energy Saver (M1,2)
Utility Models
Commercial Energy Saver (LD)
Utility Models



TO GET YOUR BRADFORD WHITE REPLACEMENT PARTS

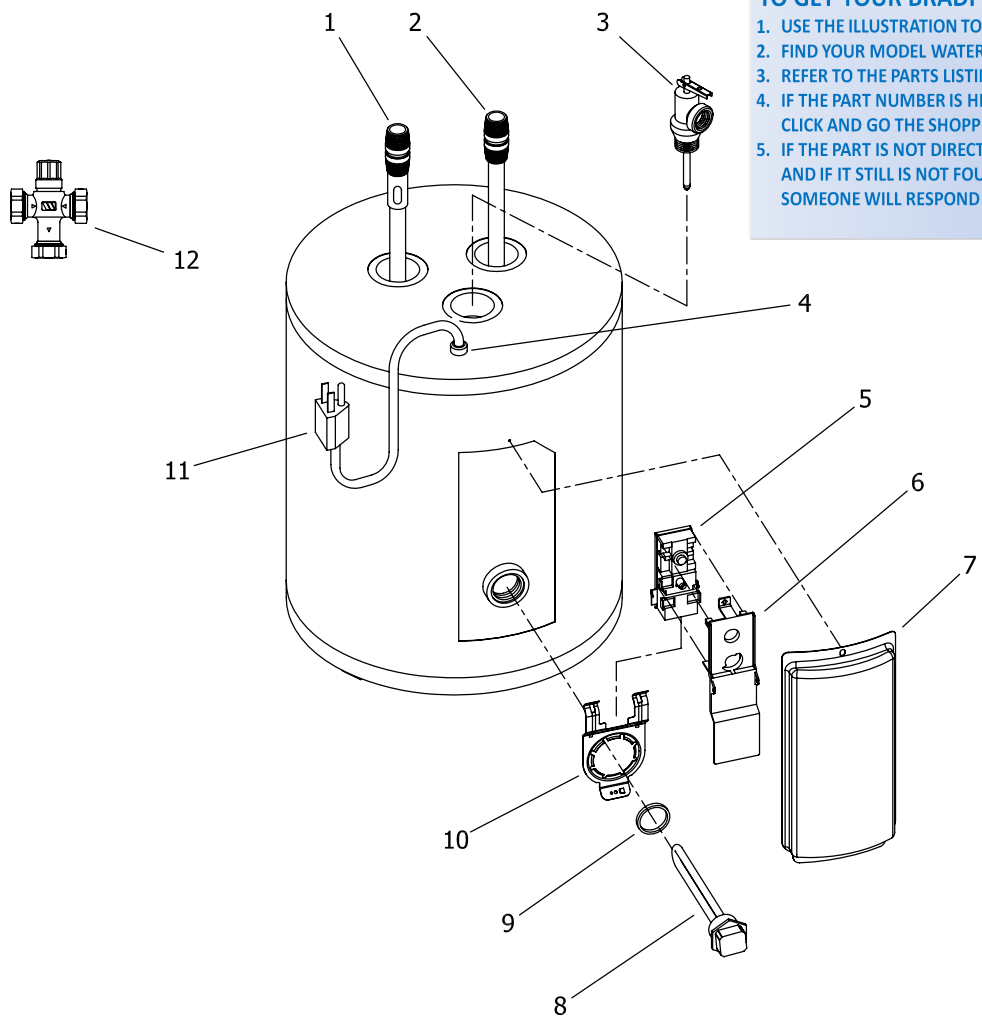
1. USE THE ILLUSTRATION TO FIND THE PART YOU NEED
2. FIND YOUR MODEL WATER HEATER NUMBER ON THE FOLLOWING PAGES
3. REFER TO THE PARTS LISTINGS WITHIN THE COLUMNS
4. IF THE PART NUMBER IS HIGHLIGHTED IN YELLOW YOU CAN DIRECTLY CLICK AND GO THE SHOPPING CART
5. IF THE PART IS NOT DIRECTLY LINKED FIRST USE THE QUICK SEARCH BOX AND IF IT STILL IS NOT FOUND USE THE CONTACT US FORM AND SOMEONE WILL RESPOND WITHIN HOURS.

Effective: June 2011
ECO 7576

**NOTE: BOTH MODEL AND SERIAL
NUMBERS ARE REQUIRED FOR
ORDERING REPLACEMENT PARTS**

Dimensions and specifications
subject to change without notice.

(M-1-12UT6SS Model Shown)



TO GET YOUR BRADFORD WHITE REPLACEMENT PARTS

1. USE THE ILLUSTRATION TO FIND THE PART YOU NEED
2. FIND YOUR MODEL WATER HEATER NUMBER ON THE FOLLOWING PAGES
3. REFER TO THE PARTS LISTINGS WITHIN THE COLUMNS
4. IF THE PART NUMBER IS HIGHLIGHTED IN YELLOW YOU CAN DIRECTLY CLICK AND GO THE SHOPPING CART
5. IF THE PART IS NOT DIRECTLY LINKED FIRST USE THE QUICK SEARCH BOX AND IF IT STILL IS NOT FOUND USE THE CONTACT US FORM AND SOMEONE WILL RESPOND WITHIN HOURS.

Item	Description	Model
		M1-2U*SS
1	Hot Water Outlet Anode (Magnesium)	224-32731-103
	Hot Water Outlet/Anode (Aluminum)	224-32999-32
2	Cold Water Inlet Dip Tube (PPDTA)	229-32730-67
	Cold Water Inlet Dip Tube (PSDTA) (NC Code)	229-34189-46
3	T&P Relief Valve	265-32920-01
4	Strain Relief Bushing	239-80372-00
5	Thermostat	219-40360-00
6	Thermostat Cover	223-40399-00
7	Hand Hole Cover	239-44929-00
8	Heating Element	265-42540-02
9	Element Gasket	223-34019-00
10	Thermostat Bracket	239-44479-00
11	Power Cord	239-38846-00
12	ASSE Approved Mixing Valve (Optional)	239-43740-01

TO GET YOUR BRADFORD WHITE REPLACEMENT PARTS

1. USE THE ILLUSTRATION TO FIND THE PART YOU NEED
2. FIND YOUR MODEL WATER HEATER NUMBER ON THE FOLLOWING PAGES
3. REFER TO THE PARTS LISTINGS WITHIN THE COLUMNS
4. IF THE PART NUMBER IS HIGHLIGHTED IN YELLOW YOU CAN DIRECTLY CLICK AND GO THE SHOPPING CART
5. IF THE PART IS NOT DIRECTLY LINKED FIRST USE THE QUICK SEARCH BOX AND IF IT STILL IS NOT FOUND USE THE CONTACT US FORM AND SOMEONE WILL RESPOND WITHIN HOURS.

*Applies to all warranties