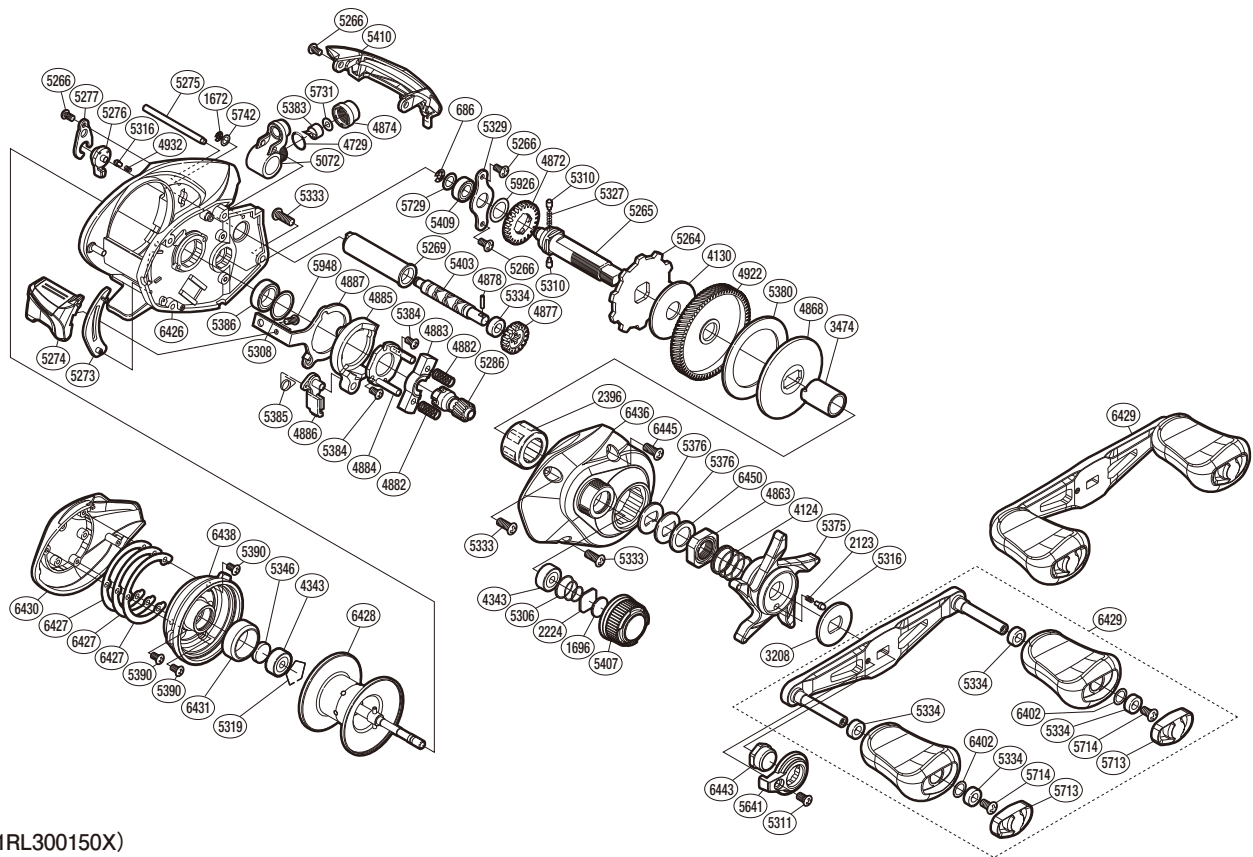


SHIMANO

CAIUS

CIS150HGB



(51RL300150X)

#	Part No.	Description	#	Part No.	Description	#	Part No.	Description
686	105NK	E Lock	5264	10D73	Anti-Reverse Ratchet	5386	10EX6	Ball Bearing
1672	105NC	E Lock	5265	105CG	Drive Shaft	5390	10LA4	Screw
1696	10896	Cast Control Spacer (B)	5266	10R1R	Screw	5403	10TPN	Worm Shaft
2123	10BT2	Click Spring	5269	10NFX	Level Wind Guard	5407	10DQE	Cast Control Cap
2224	1085F	Cast Control Spacer (A)	5273	10975	Clutch Bar Guide B	5409	10DQF	Drive Shaft Bushing
2396	10F5C	Roller Clutch Bearing	5274	10CDR	Clutch Button	5410	10DM2	Level Wind Protector
3208	10J22	Star Drag Click Plate	5275	10QSH	Stabilizer Bar	5641	10SSK	Handle Nut Plate
3474	10MAY	Roller Clutch Inner Tube	5276	10BAY	B Side Plate Cam Lever	5713	10SS2	Handle Knob Seal
4124	10A70	Star Drag Spring	5277	10BGR	Cam Lever Retainer	5714	10LFA	Screw
4130	10CHX	Drag Washer A	5286	10CSC	Pinion Gear	5729	1003V	Washer
4343	105C3	Ball Bearing	5306	10TMT	Spool Tension Spring	5731	1003S	Washer
4729	108WQ	O Ring	5308	10190	Washer	5742	10S42	Washer
4863	10A3T	Star Drag Nut	5310	10HJG	Idle Gear Pin	5926	1023S	Washer
4868	10D3H	Key Washer	5311	10LFC	Screw	5948	10LF4	Screw
4872	10J47	Idle Gear A	5316	10MFC	Click Pin	6402	10SDH	Washer
4874	10FJB	Pawl Cap	5319	1054D	Bearing Retainer	6426	10R8Q	Frame Assembly
4877	10FNV	Idle Gear C	5327	10JDY	Idle Gear Spring	6427	10R7U	Washer
4878	10AEZ	Worm Shaft Pin	5329	109T1	Drive Shaft Retainer	6428	10R8P	Spool Assembly
4882	10487	Yoke Spring	5333	10LFC	Screw	6429	10R71	Handle Assembly
4883	1046V	Yoke	5334	10PXZ	Handle Knob Bushing B	6430	101DE	Left Side Plate
4884	10F3X	Clutch Cam Retainer	5346	10EX5	Bearing Spacer	6431	10SPW	Brake Ring
4885	10K0N	Clutch Cam	5375	10R0G	Star Drag	6436	100ZV	Right Side Plate
4886	10MME	Clutch Pawl Assembly	5376	109F5	Drag Spring Washer	6438	10SQE	Dial Case
4887	10QGH	Clutch Plate	5380	10R3D	Drag Washer C	6443	101M3	Handle Nut
4922	10CMC	Drive Gear	5383	10BHQ	Line Guide Pawl	6445	10LT1	Screw
4932	10GQZ	Click Spring	5384	10L1R	Screw	6450	10J1P	Star Drag Spacer
5072	10NVR	Line Guide Pawl Holder Assembly	5385	104CP	Clutch Pawl Spring			

Please note that the number of adjusting washers may not be the same as shown in the exploded views.
(Adjustment will vary with each individual product.)

(230804)_002