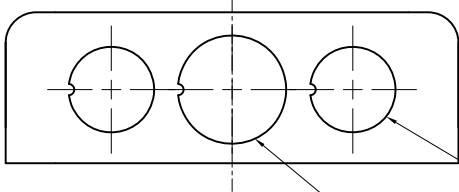
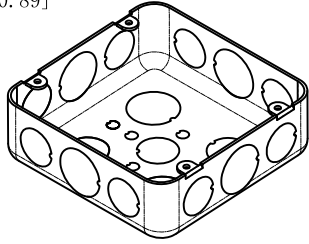


SIDES	BOTTOM
8 1/2" KNOCKOUTS	3 1/2" KNOCKOUTS
4 1/2"-3/4" MOON KNOCKOUTS	2 3/4" KNOCKOUTS
	6 KNOCKOUT
2 PCS 8-32X1/2 Screws Installed	
Material:Steel-0.0625"-G60 Galvanized	



4 1/2" KNOCKOUTS  $\phi=22.5$  [ $\phi=0.89$ ]  
MIRROR

2 3/4" KNOCKOUTS  $\phi=28.5$  [ $\phi=1.12$ ]  
MIRROR



4 1/2" KNOCKOUTS  $\phi=22.5$  [ $\phi=0.89$ ]  
MIRROR

2x3/4" KNOCKOUTS  $\phi=28.5$  [ $\phi=1.12$ ]

4-#8-32 UNC HOLE

119.06 [4.69]

107.95 [4.250]

A

39.7 [1.56]

Garvin Industries

Pat. US 7,812,255 B  
29.5 CU.IN

72151-SVT

119.06 [4.69]

69.85 [2.750]

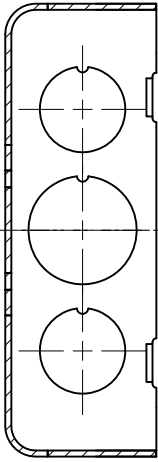
6 KNOCKOUTS  $\phi=6.75$  [ $\phi=0.27$ ]

2 1/2" KNOCKOUTS  $\phi=22.5$  [ $\phi=0.89$ ]

2 3/4" KNOCKOUTS  $\phi=28.5$  [ $\phi=1.12$ ]  
MIRROR

$\phi 38.1$  [ $\phi 1.50$ ]

A



CUTAWAY VIEW A-A

DESCRIPTION
Patent #: Pat. US 7,812,255 B
TRADE REFERENCE TERMS

This data sheet is for reference only. GARVIN INDUSTRIES reserves the right to make changes to the design without prior notice.

STANDARD PACKING	GARVIN INDUSTRIES		
25 PCS	SIZE	DWG NO.	REV
	A4	72151-SVT	C
DATA SHEET			