

AXOR Montreux
2-Handle Freestanding Tub Filler Trim with Cross Handles and 1.8 GPM Handshower
 Finishes : **brushed nickel** Part no. : **16562821**



Description

Features

- Flow: 4.76 GPM (18 L/Min)
- 90° ceramic valves
- Integrated double backflow prevention

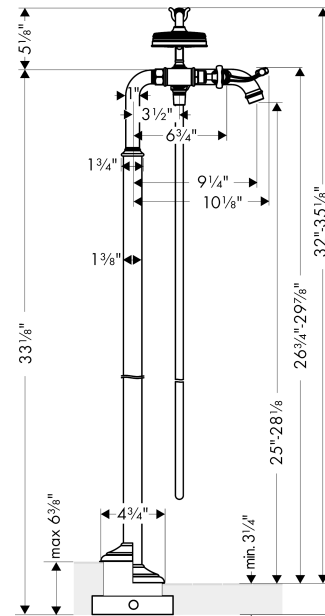
Technology



Product image



Scale drawing

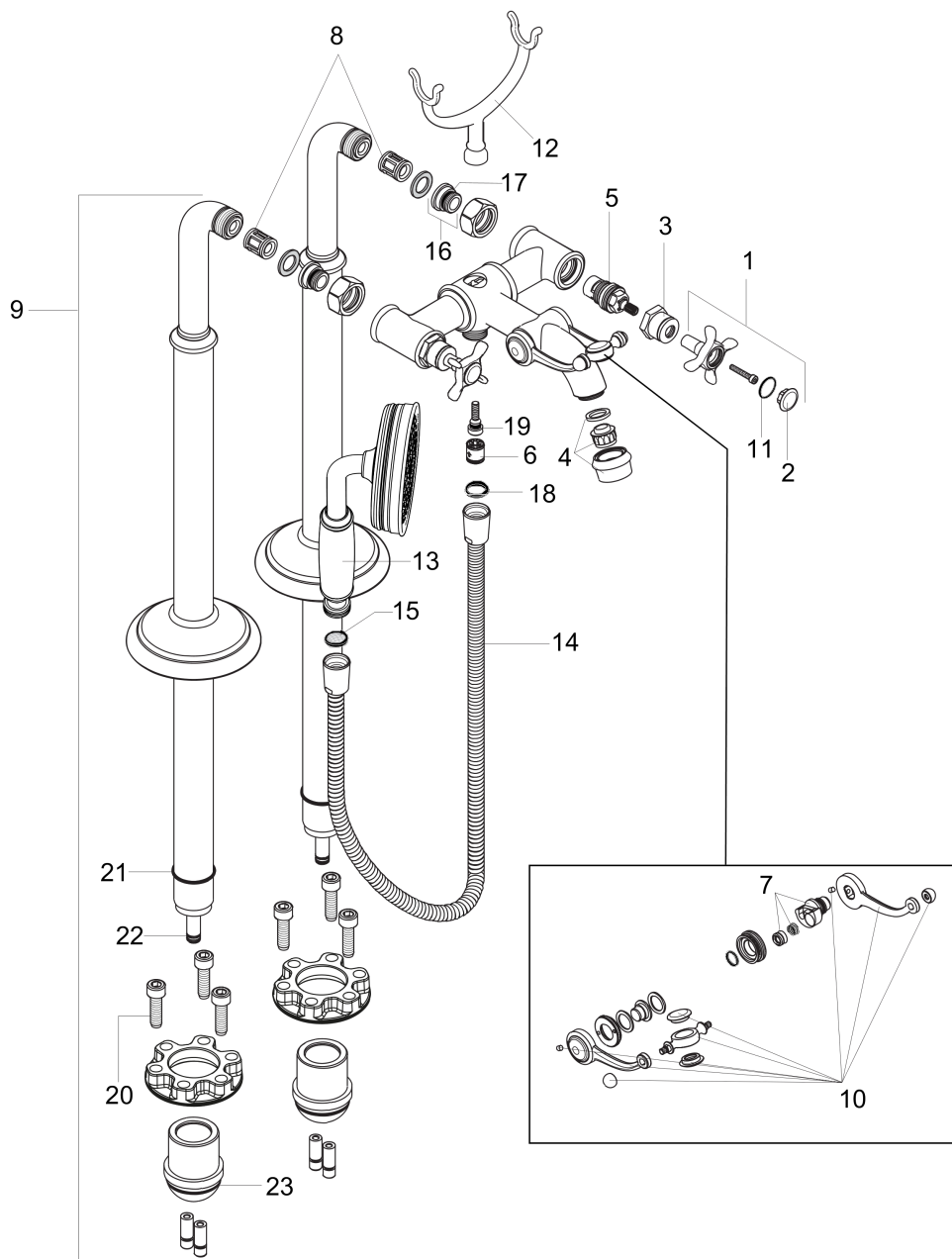


AXOR Montreux
2-Handle Freestanding Tub Filler Trim with Cross Handles and 1.8 GPM Handshower
 Finishes : **brushed nickel** Part no. : **16562821**



Exploded drawing

Year of production: >01/19



AXOR Montreux
2-Handle Freestanding Tub Filler Trim with Cross Handles and 1.8 GPM Handshower
 Finishes : **brushed nickel** Part no. : **16562821**



Spare parts list

Year of production: >01/19

| Pos. | Description | Part no. | PC | PU |
|------|---|----------|----|----|
| 1 | handle | 16597820 | 0 | 1 |
| 2 | set of screw covers, cold / hot water / neutral | 97987000 | 0 | 1 |
| 3 | sleeve | 97993820 | 0 | 1 |
| 4 | aerator M22x1 (25 l/min) | 98575820 | 0 | 1 |
| 5 | shut off unit right closing | 94009000 | 0 | 1 |
| 6 | set of non return valves DW 15 | 94074000 | 0 | 1 |
| 7 | selector | 98591000 | 0 | 1 |
| 8 | noise reduction | 96429000 | 0 | 1 |
| 9 | pillar union | 98856820 | 0 | 1 |
| 10 | sliding gear lever | 98594820 | 0 | 1 |
| 11 | O-ring 16x2 | 98133000 | 0 | 1 |
| 12 | shower base | 98590820 | 0 | 1 |
| 13 | handshower | 04695820 | 0 | 1 |
| 14 | shower hose 1,25 m | 28112820 | 0 | 1 |
| 15 | filter packing | 94246000 | 0 | 1 |
| 16 | connecting thread | 97220000 | 0 | 1 |
| 17 | O-ring 15x2 | 98163000 | 0 | 1 |
| 18 | seal | 98058000 | 0 | 1 |
| 19 | O-ring 5x2 | 98215000 | 0 | 1 |
| 20 | hexagon socket screw M10x35 | 97670000 | 0 | 1 |
| 21 | O-ring 35x2 | 92604000 | 0 | 1 |
| 22 | supply pipe 02/99 - 09/02 | 97226000 | 0 | 1 |
| 23 | O-ring 44x2,5 | 98162000 | 0 | 1 |
| a | O-ring 9x1,5 | 98117000 | 0 | 1 |