

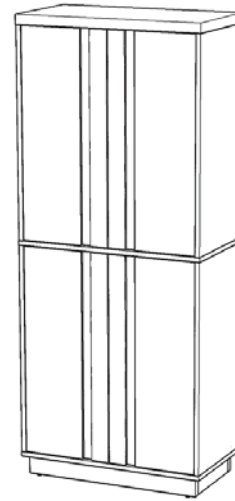
Pantry

IMPORTANT

Carefully remove all the parts from the carton and place them individually on a soft cloth to prevent scratches or other damage.

Carefully and strictly follow these assembly instructions to ensure a completed product as designed.

Do not use power tools above 8 volts to assemble.



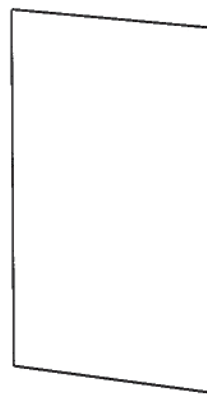
Part List



F.
Side Panel
4 pcs.



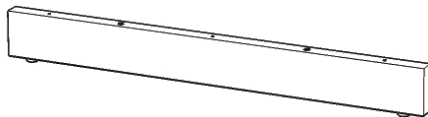
G.
Back Upright
4 pcs.



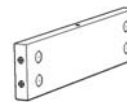
H.
Back Panel
2 pcs.



I.
Door
4 pcs.

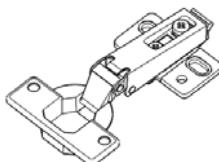


J.
Plinth
2 pcs.



K.
Plinth
2 pcs.

Hardware List



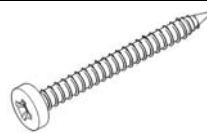
Hinge
12 pcs.



Cam Lock Screw
32 pcs. (+2 extra)



Cam Lock Screw (long)
6 pcs. (+1 extra)



M3.5x64
Wood Screw (long)
8 pcs. (+1 extra)



Plastic Clip
12 pcs. (+1 extra)



Dowel (long)
4 pcs. (+1 extra)



Adjustable Pin
16 pcs. (+1 extra)



Cam Lock
44 pcs. (+6 extra)



M3.5x19
Wood Screw (short)
6 pcs. (+1 extra)



M3.5x14
Wood Screw
for Hinge
72 pcs. (+1 extra)



M3x20
Wood Screw
for Plastic Clip
12 pcs. (+1 extra)



Dowel
20 pcs. (+1 extra)



Cover
22 pcs. (+1 extra)

Carton 20 08001 0692 is also needed for assembly.

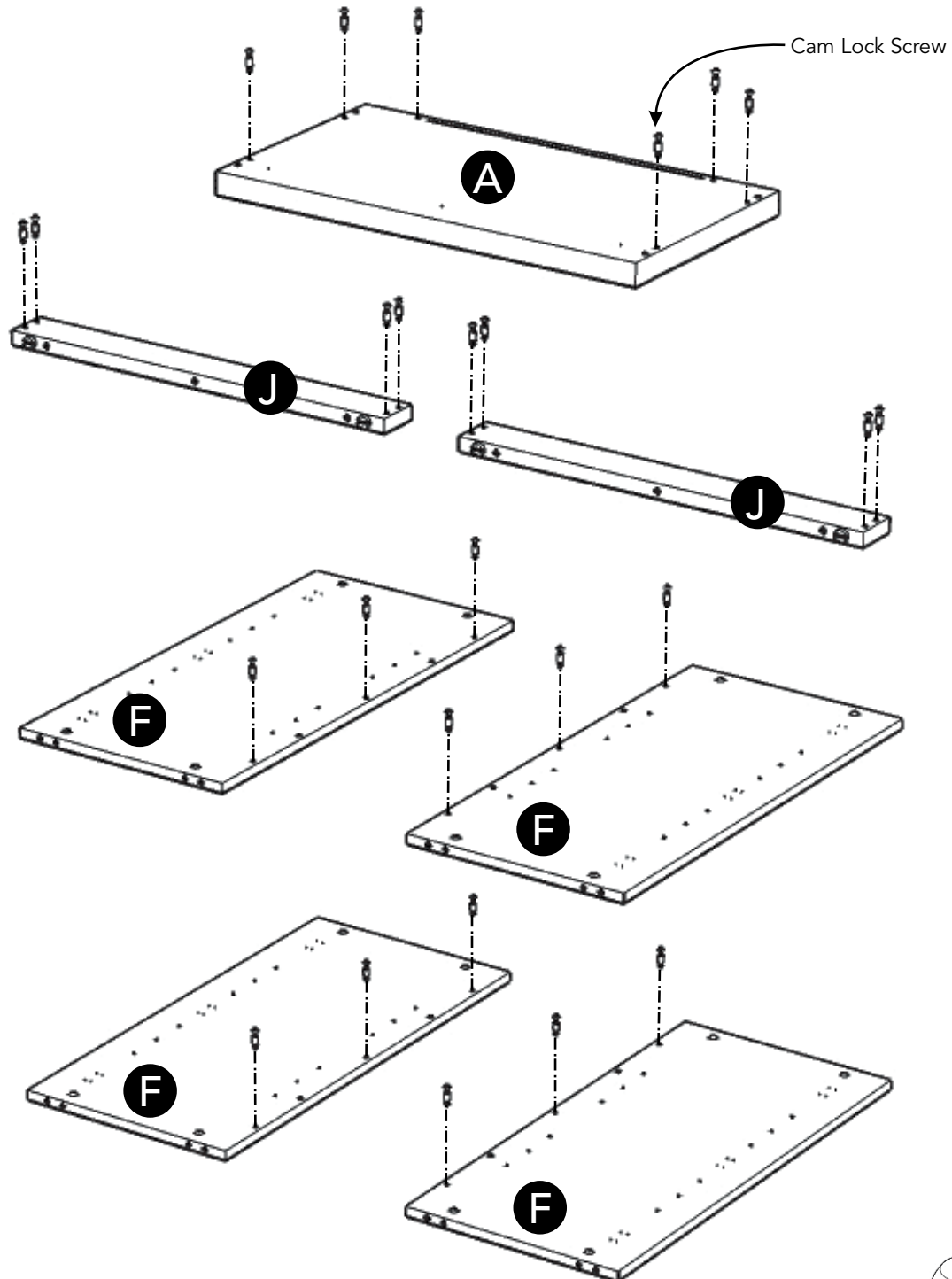
Tool(s) required for assembly: Phillips screwdriver, Level, Drill (8 volts or less), 3/8" Drill Bit

Home Styles Customer Service: www.homestyles-furniture.com,
servicedesk@homestyles-furniture.com, 888-680-7460, 877-831-0319

Assembly Instructions 2/11

IMPORTANT

- Use a soft cloth between these parts and the floor.
- Do not use power tools above 8 volts to assemble.
- Make sure unit is level before tightening these screws.
- The unit must be level to work properly. Use the included adjustable levelers to level.



STEP 1

Insert Cam Lock Screws into pre-drilled holes in Top (A), Side Panels (F) and Plinths (J), then tighten. (See Figure 1)

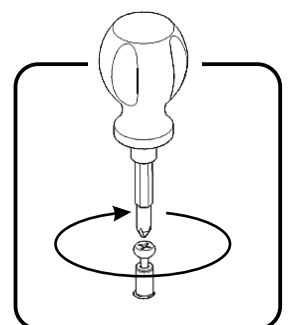


Figure 1

STEP 2

Attach Plinths (J) to Plinths (K) with Cam Locks. (See Figure 2)

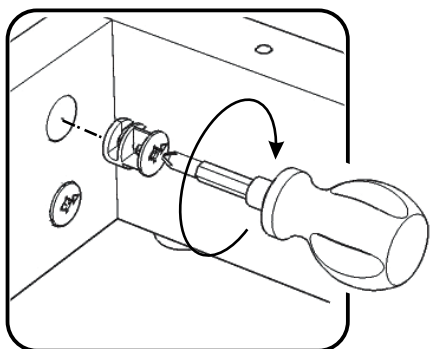
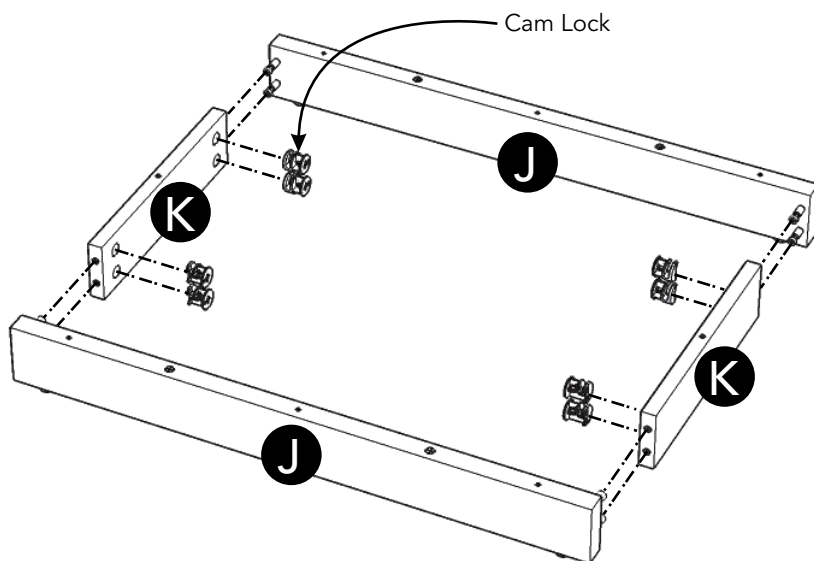


Figure 2



STEP 3

Place Base (E) upside down on a soft cloth.

Insert Dowels into pre-drilled holes in Base (E). (See Figure 3)

Attach unit to Base (E) with Wood Screws (long). (See Figure 4)

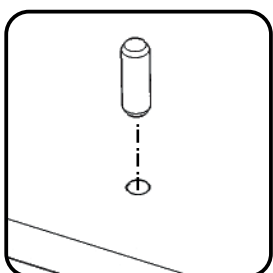


Figure 3

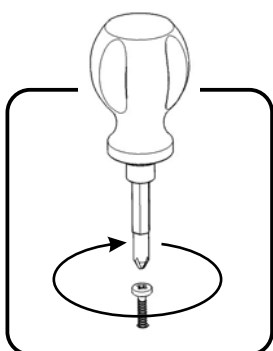
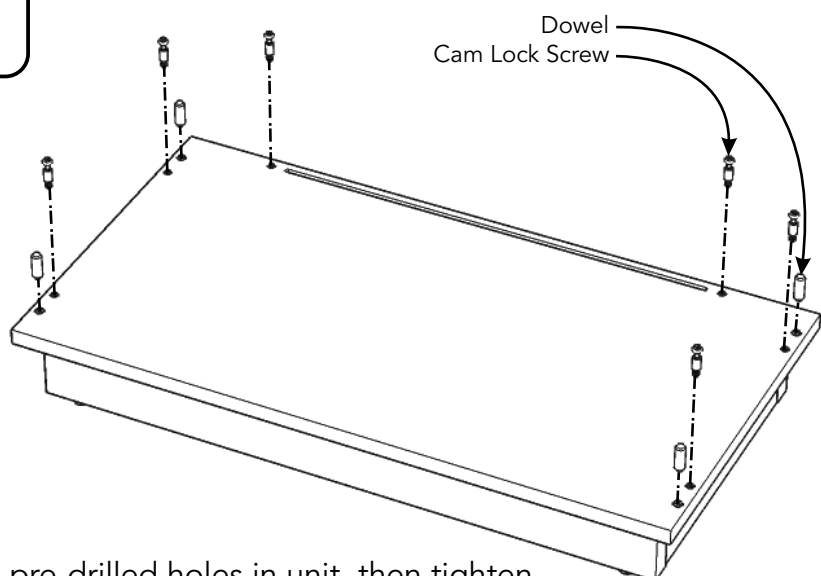
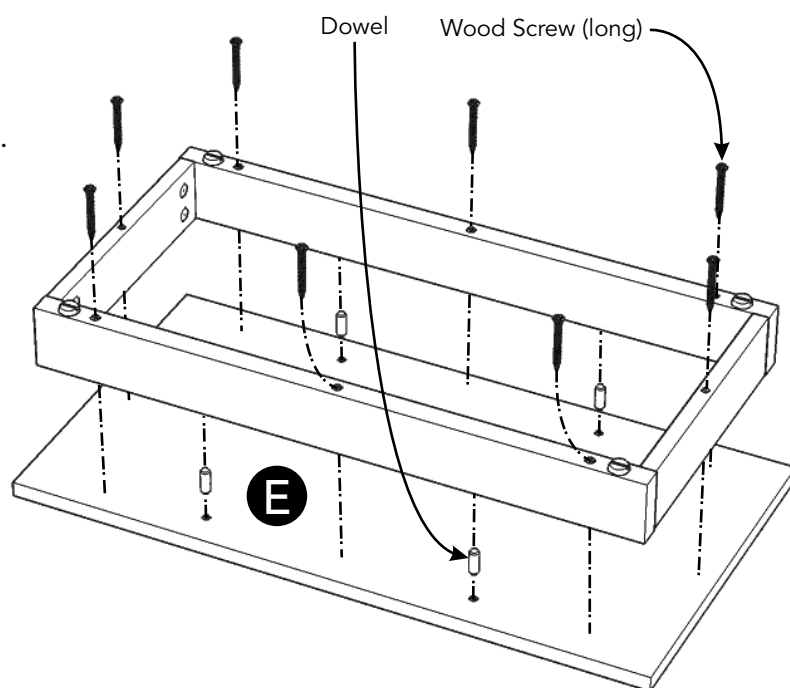


Figure 4



STEP 4

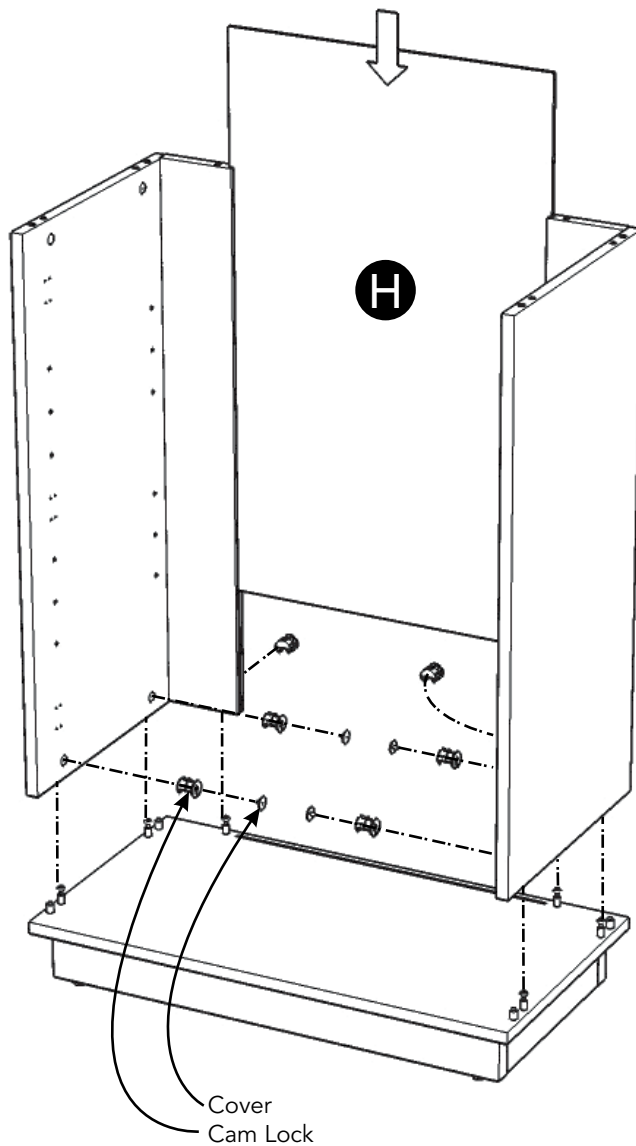
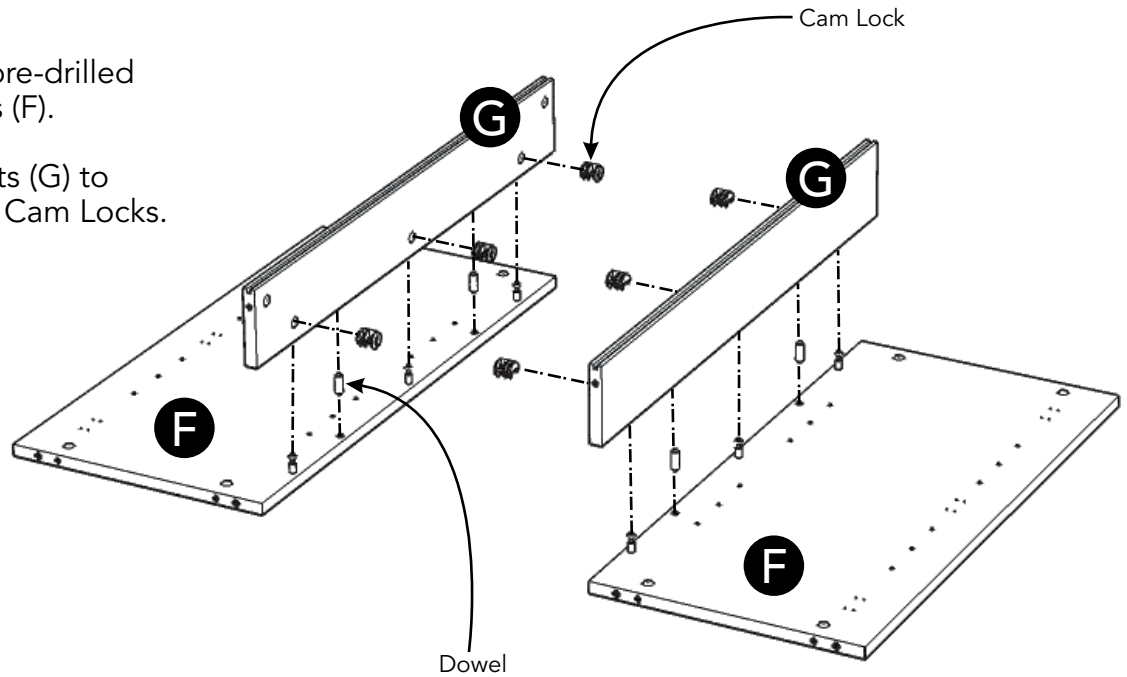
Turn unit over to its' upright position.

Insert Dowels and Cam Lock Screws into pre-drilled holes in unit, then tighten.

STEP 5

Insert Dowels into pre-drilled holes in Side Panels (F).

Attach Back Uprights (G) to Side Panels (F) with Cam Locks.



STEP 6

Attach units from Step 5 to unit from Step 4 with Cam Locks.

Cover Cam Locks with Covers.
(See Figure 5)

Slide Back Panel (H) into position.

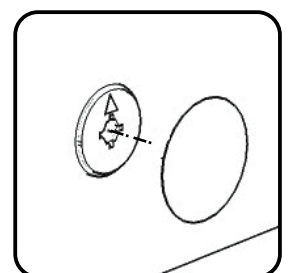


Figure 5

STEP 7

Attach Rail (C) to Middle Panel (B) with Wood Screws (short).

Cover Wood Screws (short) with Covers. (See Figure 6)

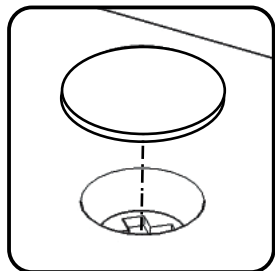
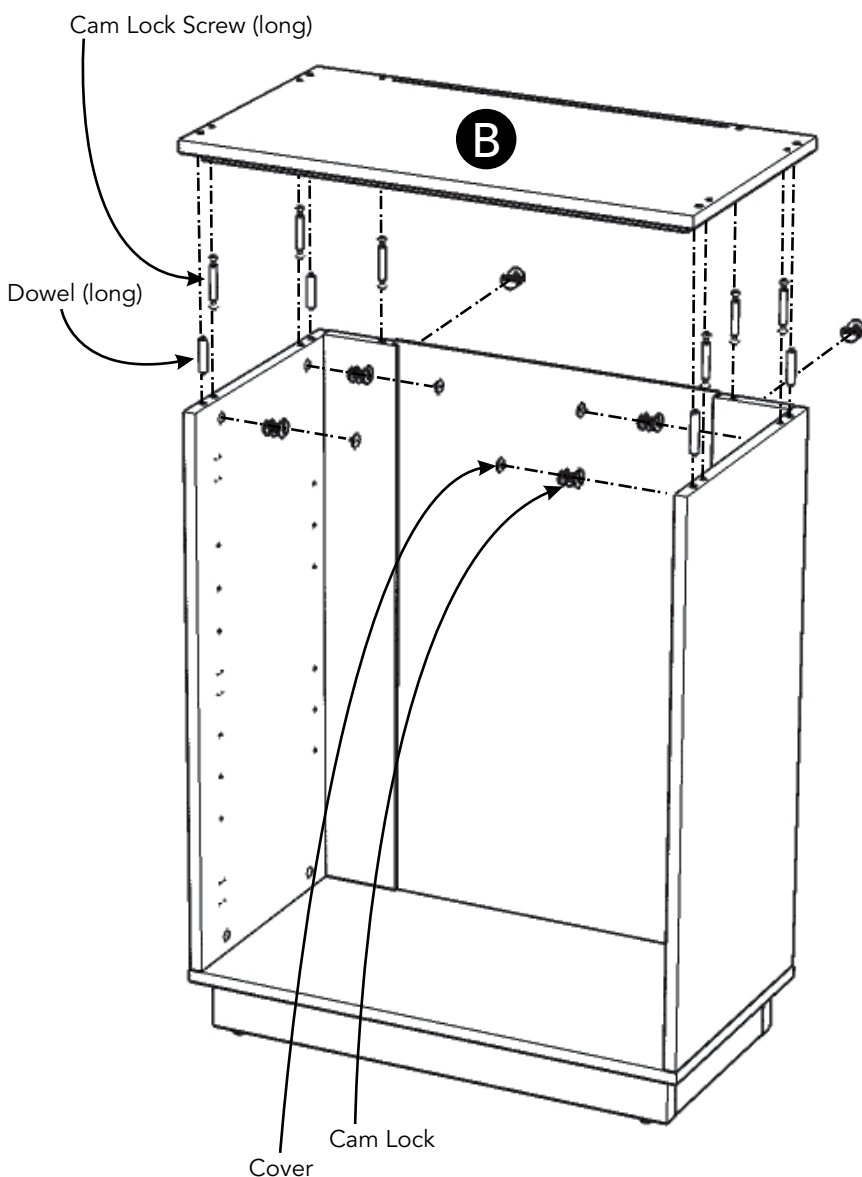
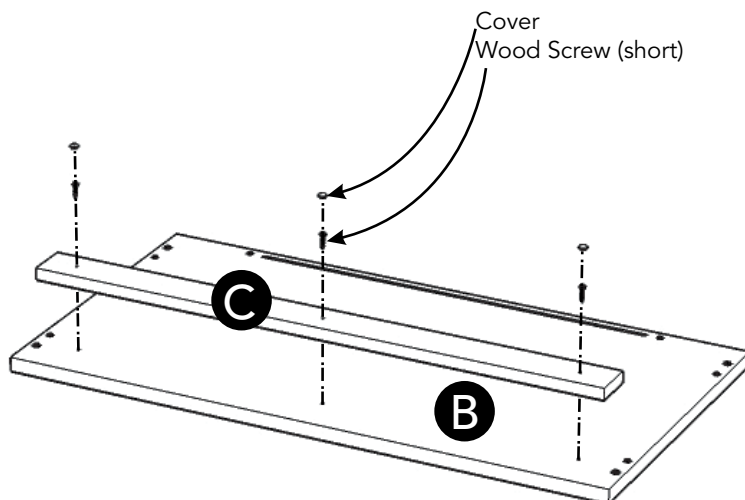


Figure 6



STEP 8

Insert Dowels (long) and Cam Lock Screws (long) into pre-drilled holes in unit from Step 6. (See Figure 7)

Attach Middle Panel (B) to unit with Cam Locks.

Cover Cam Locks with Covers.

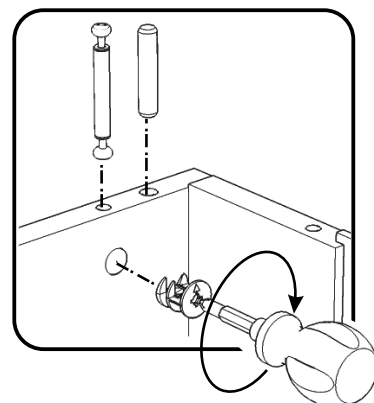


Figure 7

STEP 9

Attach Hinges to Doors (I) with Wood Screws for Hinge into pre-drilled holes, then tighten. (See Figure 8)

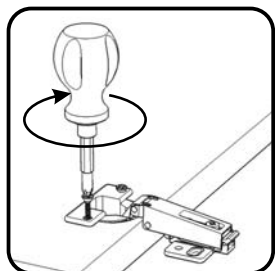


Figure 8

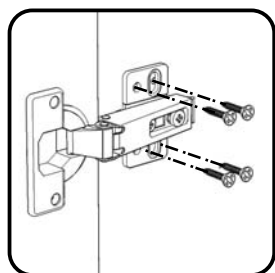
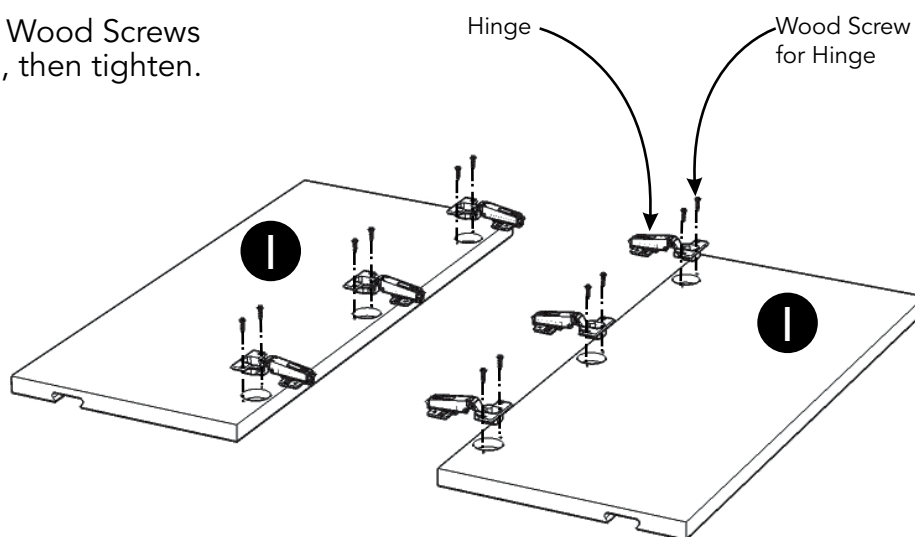


Figure 9

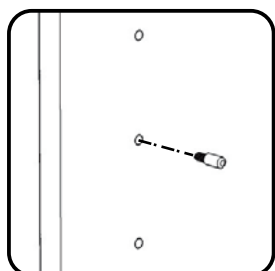
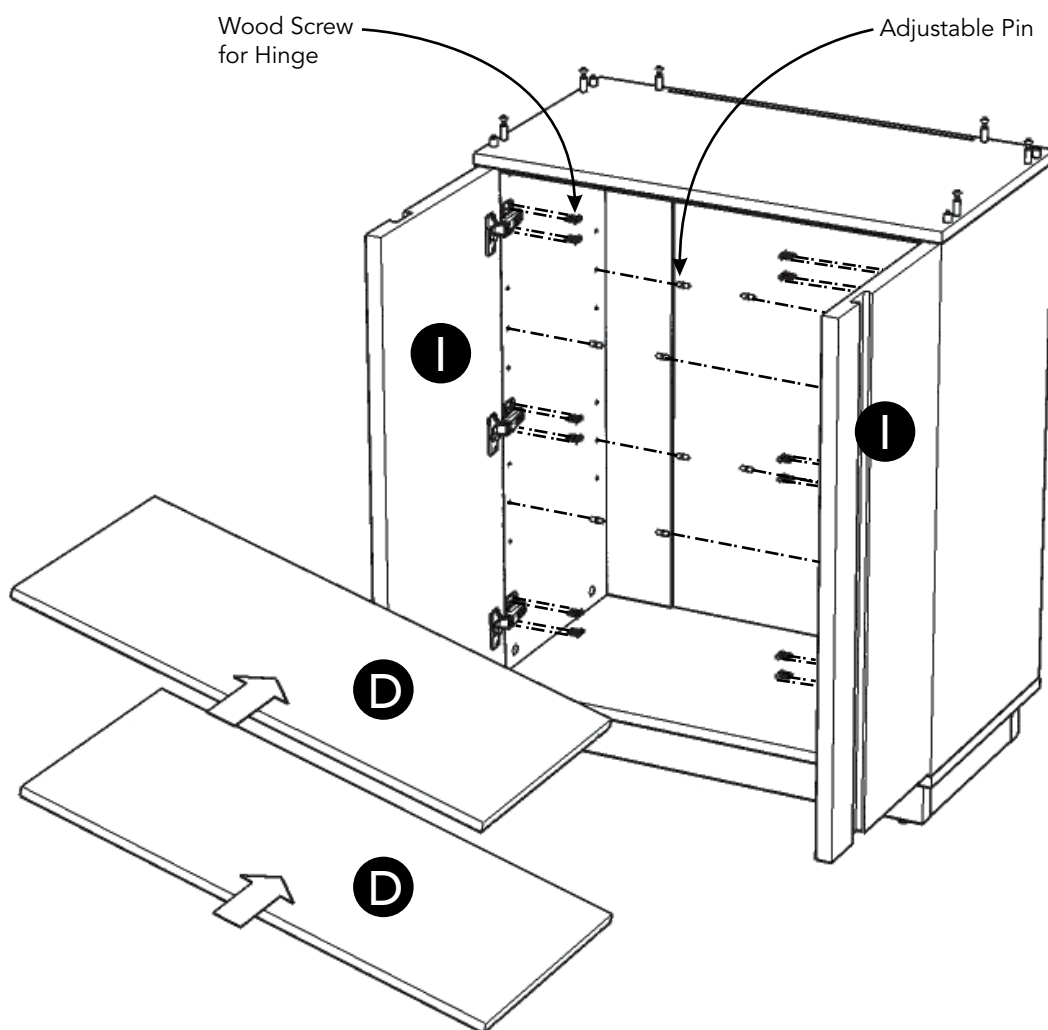


Figure 10



STEP 10

Attach Doors (I) to unit with Wood Screws for Hinge. (See Figure 9)

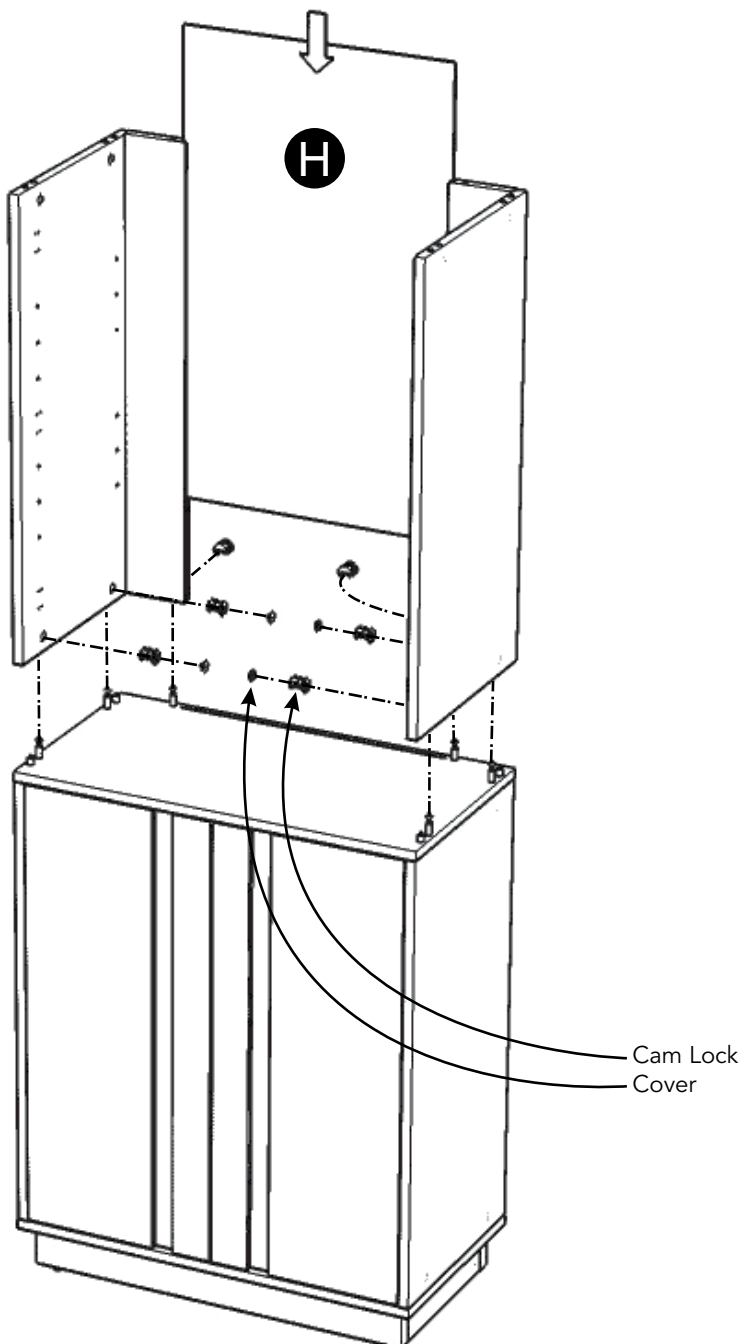
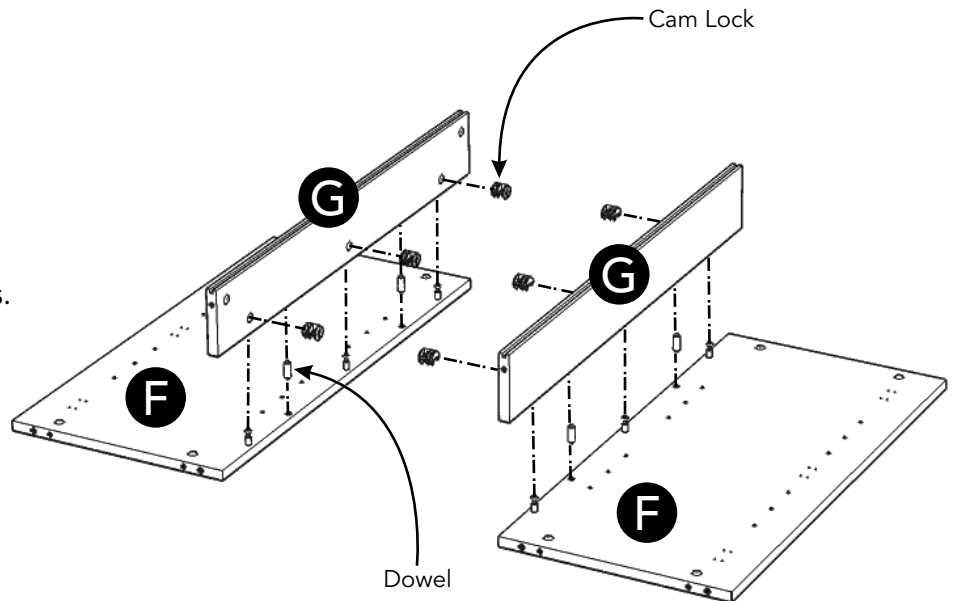
Insert Adjustable Pins into side panels at desired level. (See Figure 10)

Place Shelves (D) into position.

STEP 11

Insert Dowels into pre-drilled holes in Side Panels (F).

Attach Back Uprights (G) to Side Panels (F) with Cam Locks.

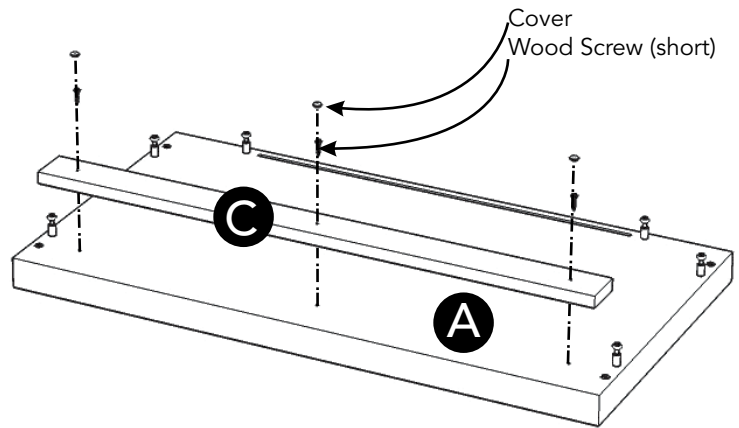


STEP 12

Attach units from Step 11 to unit from Step 10 with Cam Locks.

Cover Cam Locks with Covers.

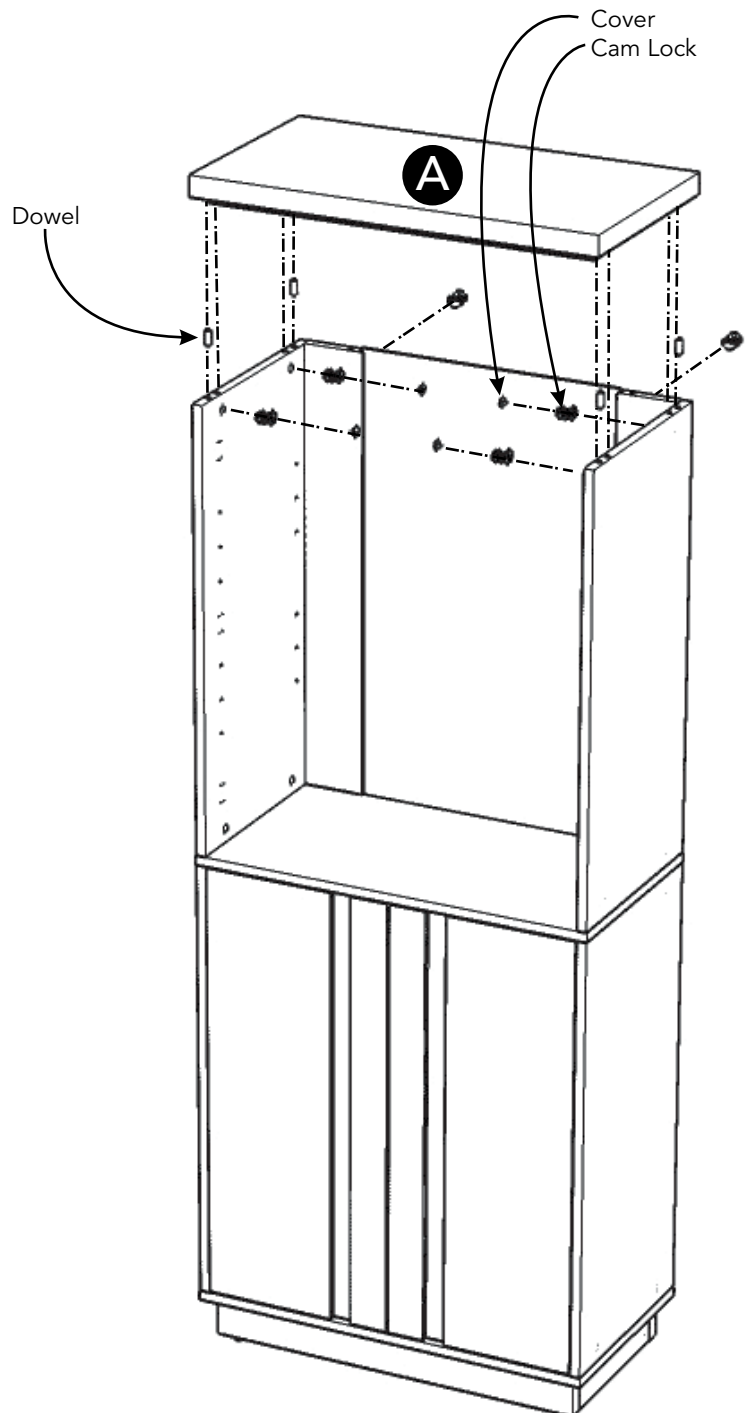
Slide Back Panel (H) into position.



STEP 13

Attach Rail (C) to Top (A) with Wood Screws (short).

Cover Wood Screws (short) with Covers.



STEP 14

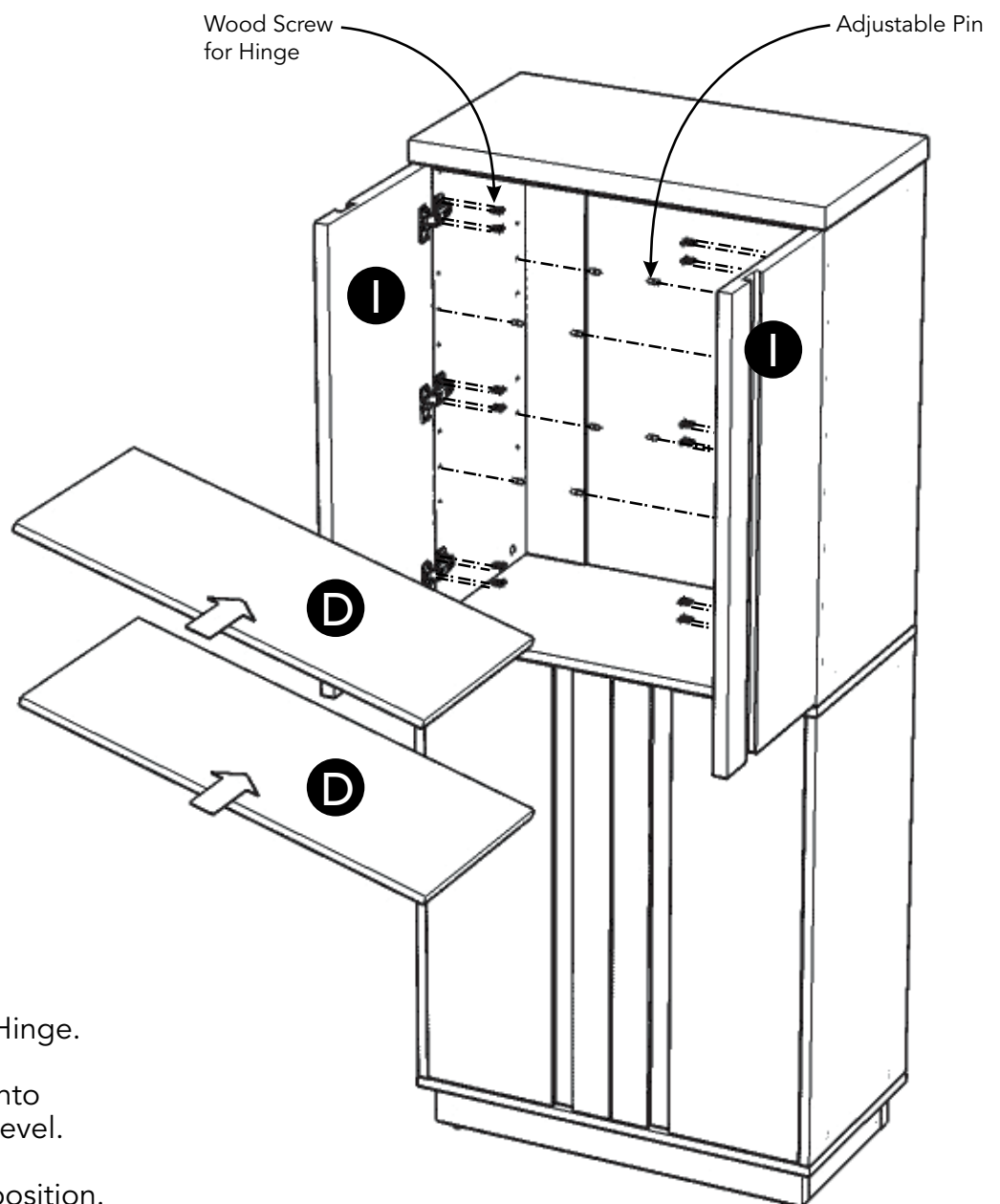
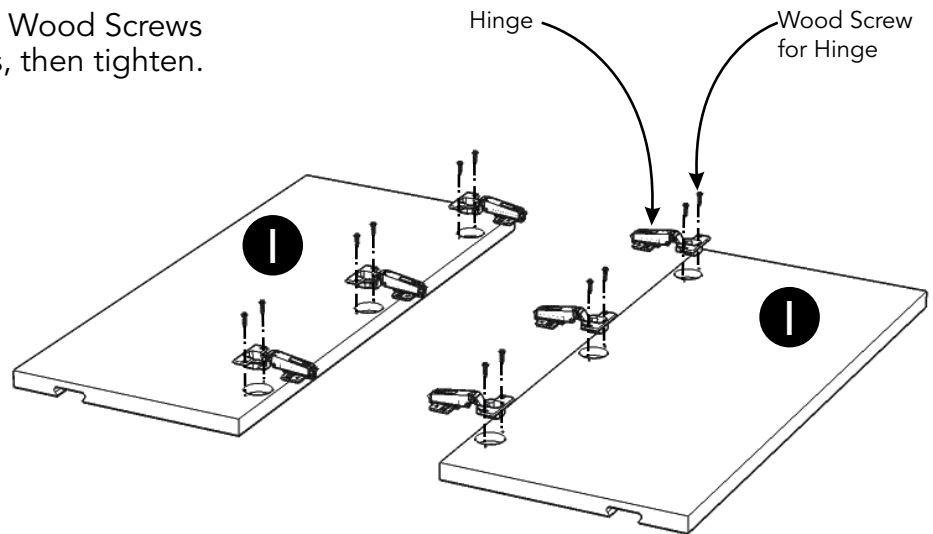
Insert Dowels into pre-drilled holes in unit from Step 12.

Attach Top (A) to unit with Cam Locks.

Cover Cam Locks with Covers.

STEP 15

Attach Hinges to Doors (I) with Wood Screws for Hinge into pre-drilled holes, then tighten.



STEP 16

Attach Doors (I) to unit with Wood Screws for Hinge.

Insert Adjustable Pins into side panels at desired level.

Place Shelves (D) into position.

STEP 17

Level unit by adjusting the adjustable levelers on bottom of unit. (See Figure 11)

Attach Plastic Clips to unit with Wood Screws for Plastic Clip. (See Figure 12)

Note: Unit must be level before attaching Plastic Clips.

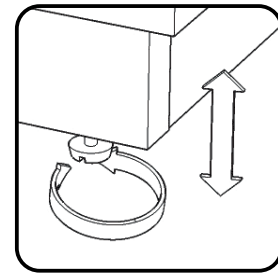
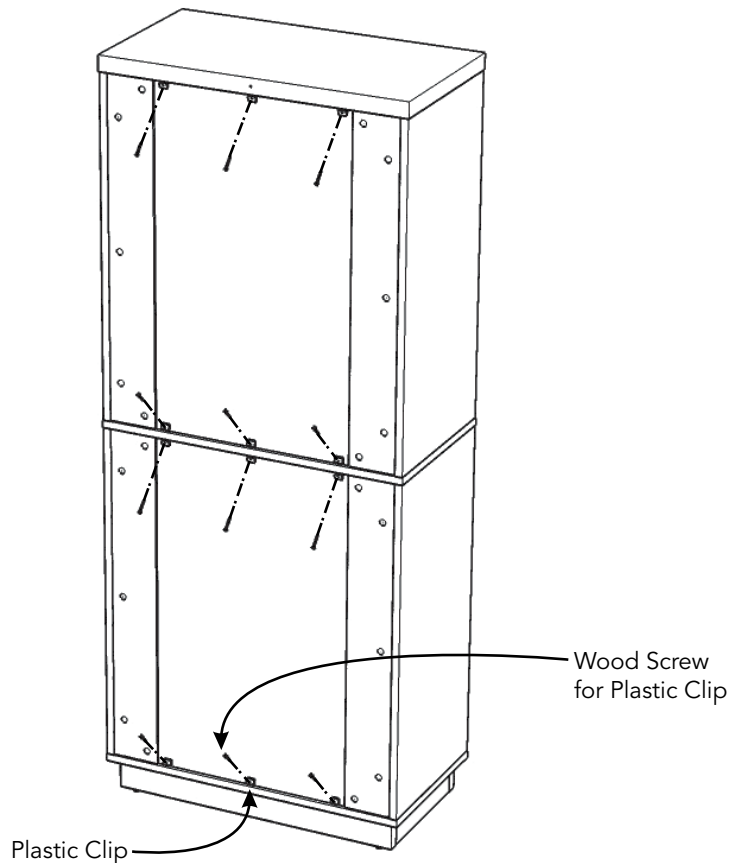


Figure 11

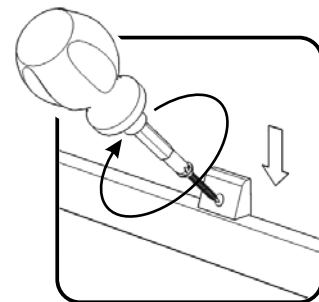


Figure 12

STEP 18

If needed, adjust doors up or down by removing the front Wood Screws for Hinge and loosening slightly the back Wood Screws for Hinge from side panel, adjusting doors up or down and reinstalling screws. (See Figure 13)

If needed, adjust doors left to right. (See Figure 14)

If needed, adjust doors front to back. (See Figure 15)

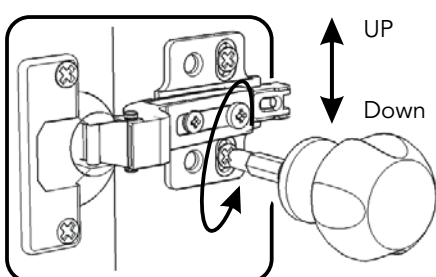


Figure 13

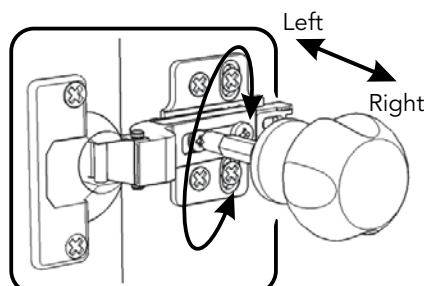


Figure 14

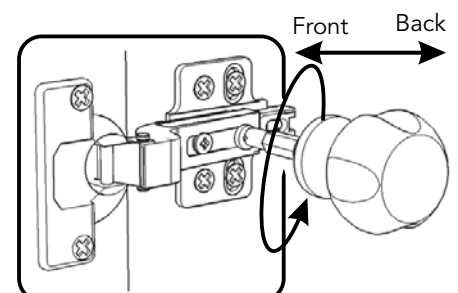


Figure 15

Assembly Instructions 11/11

IMPORTANT

- To help reduce the risk of the unit tipping over, the Tip-over Restraint must be installed following these instructions exactly.

STEP 19

Place unit at desired location.

Drill a 3/8" hole in wall in-line with pre-drilled hole at top of unit.

Move unit.

Insert Anchor into the wall hole and attach Bracket with Wall Screw.

Attach Bracket at pre-drilled hole at top of unit with Wood Screw.

Move unit back into place.

Slide Tip-over Restraint through Bracket on wall and Bracket on unit.
(See Figure 16)

Put tie end of Tip-over Restraint into lock end of Tip-over Restraint and pull until tight.

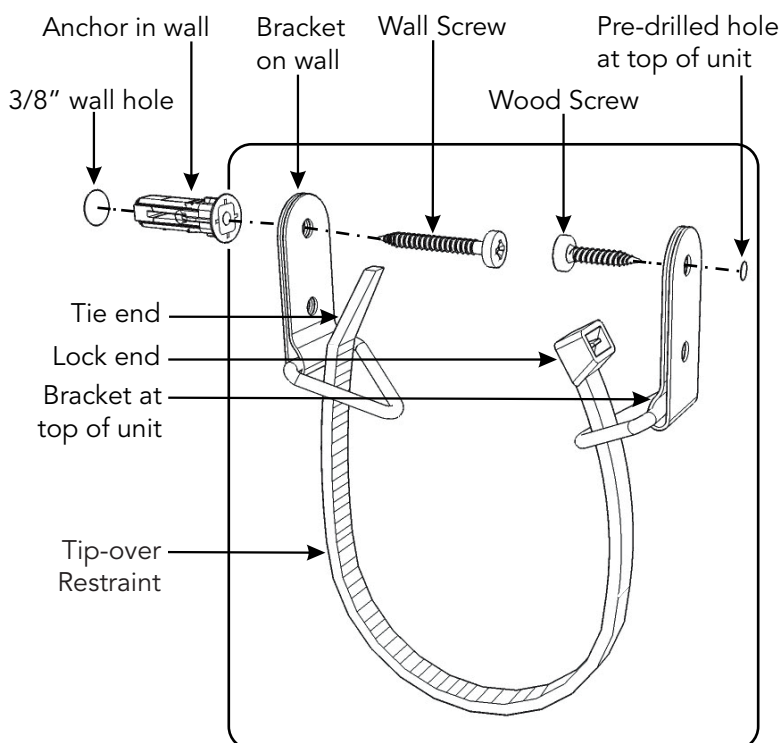
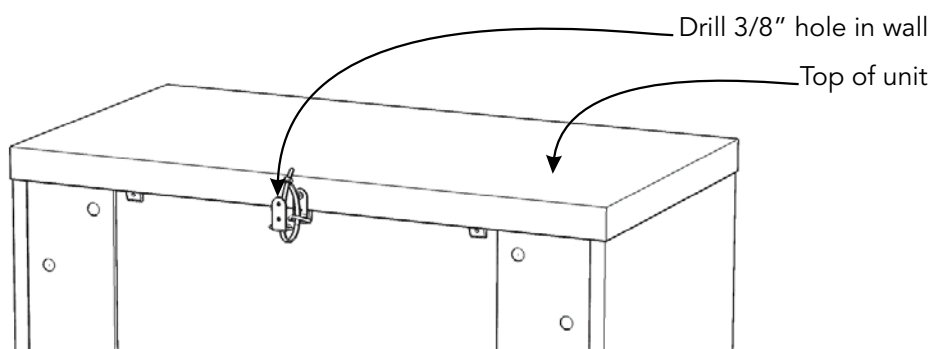
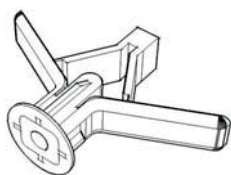


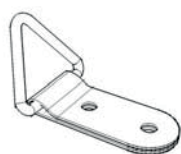
Figure 16



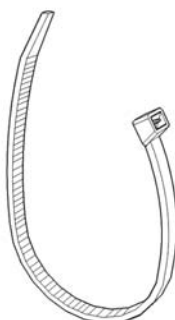
Hardware List



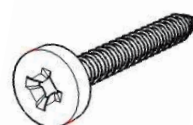
Anchor
1 pc. (+1 extra)



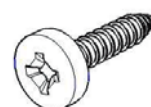
Bracket
2 pcs. (+1 extra)



Tip-over Restraint
1 pc. (+1 extra)



M3.5x38
Wall Screw
1 pc. (+1 extra)



M3x16
Wood Screw
1 pc. (+1 extra)

CARE INSTRUCTIONS

NEVER

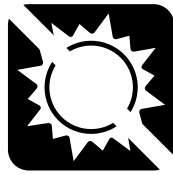
allow liquids to remain on furniture.
Absorption causes parts to warp
and split and finishes to delaminate.

NEVER

use glass cleaners on
finished furniture. Ammonia
chemically attacks the finish.



Do not use power tools
above 8 volts to assemble.
**PREVENT
CRACKING**



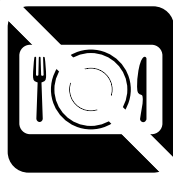
Do not place
in direct sunlight.
**PREVENT
FADING**



Do not write
directly on surface.
**PREVENT
MARKING**



Do not place hot
objects on surface.
**PREVENT
FINISH DAMAGE**



Do not use rubber
based placemats.
**PREVENT
DISCOLORING**



Do not use commercial
waxes and polishes.
**PREVENT
YELLOWING**

CLEAN

with a soft cloth moistened
in lukewarm soap and water.
Buff with a dry clean cloth.



Home Styles will provide replacements free of charge for missing or damaged hardware or parts within 30 days of purchase. Digital images of the defective parts may be required. If the product was not purchased from an authorized retail affiliate, Home Styles is under no obligation to provide replacement parts. Parts are not available for fully assembled items nor are parts available for sale. Replacements for missing or damaged hardware or parts may be requested at:

www.homestyles-furniture.com/customer-service/replacement-parts

Home Styles Customer Service: www.homestyles-furniture.com,
servicedesk@homestyles-furniture.com, 888-680-7460, 877-831-0319