

Croma
Showerpipe 150 1-Jet, 2.0 GPM
 Finishes : **chrome** Part no. : **27169001**



Description

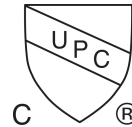
Features

- Height-adjustable hand shower holder
- Flow: 2.0 GPM (7.6 L/Min)
- Anti-scald 100° safety stop
- Integrated volume control/diverter for 2 functions
- Outlets may not be operated simultaneously
- Exposed installation
- Thermostatic cartridge
- Built-in service stops
- MASS/Massachusetts
- DOE/FTC
- TECQ/Texas Registered

Technology



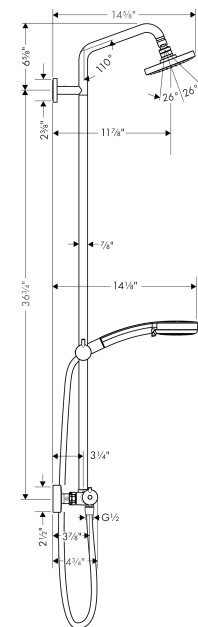
Compliance



Product image



Scale drawing

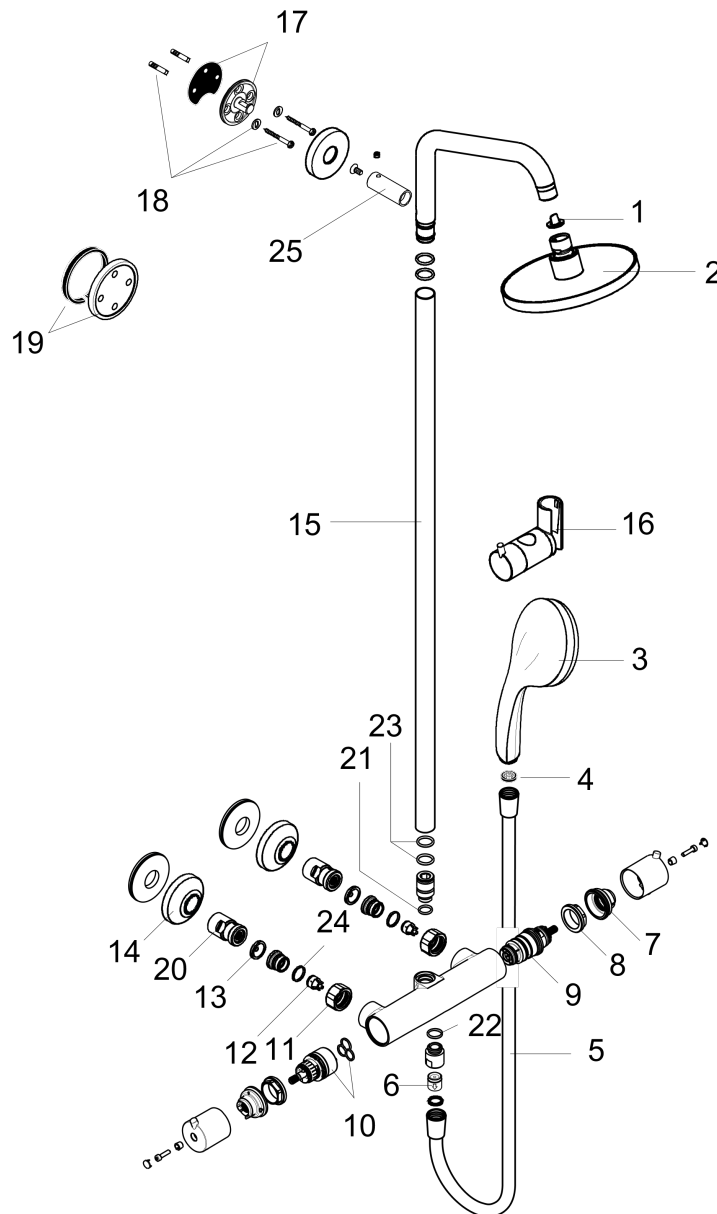


Croma
Showerpipe 150 1-Jet, 2.0 GPM
 Finishes : **chrome** Part no. : **27169001**



Exploded drawing

Year of production: >07/12



Croma
Showerpipe 150 1-Jet, 2.0 GPM
 Finishes : **chrome** Part no. : **27169001**



Spare parts list

Year of production: >07/12

Pos.	Description	Part no.	PC	PU
1	filter packing	88649000	0	1
2	head shower	04342000	0	1
3	handshower	04083000	0	1
4	filter packing	94246000	0	1
5	shower hose 1,60 m	28276003	0	1
6	non return valve	97980000	0	1
7	safety set for temperature control	98916000	0	1
8	nut	98913000	0	1
9	thermostat cartridge	98282001	0	1
10	shut off unit with selector	98283000	0	1
11	set of nuts	96157000	0	1
12	non return valve	96737000	0	1
13	filter packing	96922000	0	1
14	escutcheon	98340000	0	1
15	pipe 1450 mm	96770000	0	1
16	support, assy	97651000	0	1
17	mounting set	96179000	0	1
18	wall flange	95688000	0	1
19	tile-matching-disk	95239000	0	1
20	isolation valve	98341000	0	1
21	O-ring 12x2	98214000	0	1
22	O-ring 14x2	98129000	0	1
23	O-ring 15x2,5	98131000	0	1
24	O-ring 17x1,5	98137000	0	1
25	sleeve	92166000	0	1
a	shower arm	95137000	0	1
b	handle	98915000	0	1
c	escutcheon Ø 60 mm	95692000	0	1
d	pushbutton	92848000	0	1