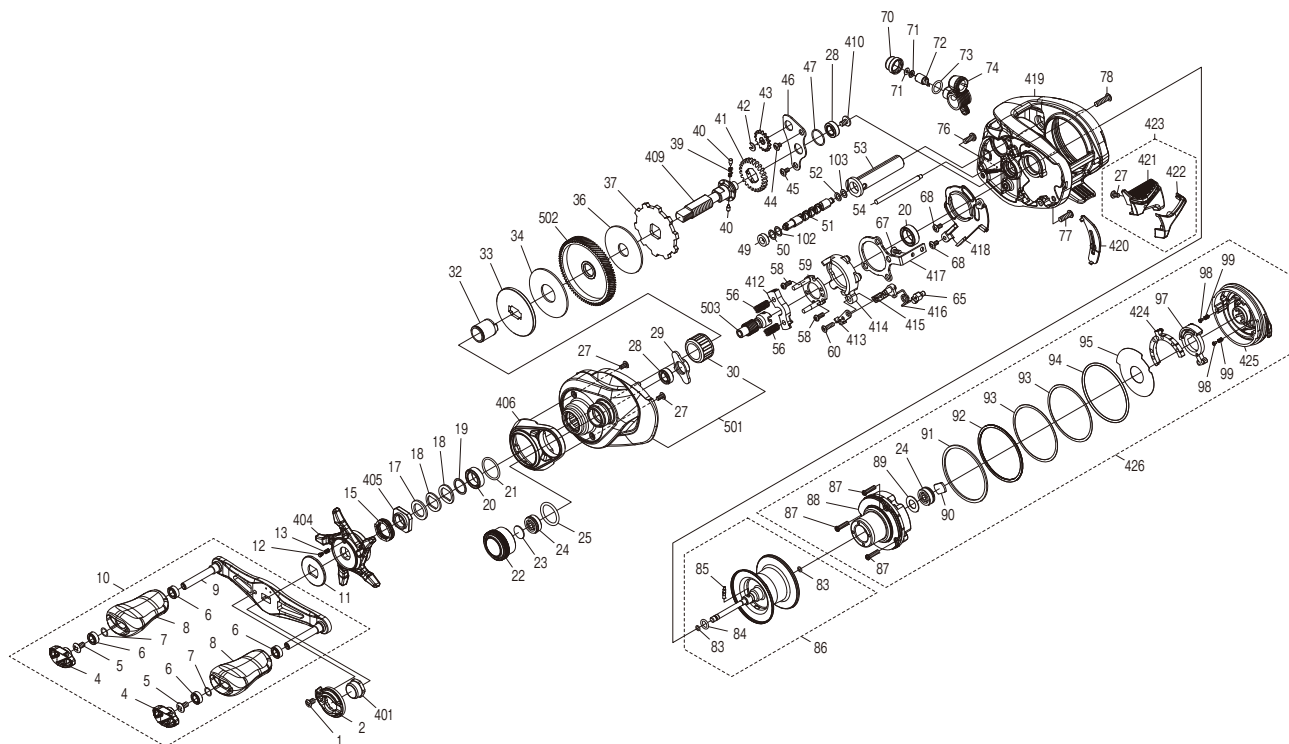


# SHIMANO

## Metanium DC

## METDC71HGA



(51RL694A31X)

#	Part No.	Description	#	Part No.	Description	#	Part No.	Description
1	10DN7	Screw	43	10FNX	Idle Gear C	92	144NN	Washer
2	1017T	Handle Nut Plate	44	10MPF	Screw	93	1024A	Washer
4	10RLX	Handle Knob Seal	45	10MT2	Screw	94	144NL	O Ring
5	10DQN	Screw	46	1005S	Drive Shaft Retainer	95	144NR	B Side Id Sticker
6	104VX	Ball Bearing	47	10SZ4	O Ring	97	1469R	DC Dial Assembly
7	104FH	Washer	49	10PXY	Bushing	98	144NT	Click Pin
8	10RMU	Handle Knob	50	10GFG	Washer	99	10T6Z	Click Spring
9	1469J	Handle Shank Assembly	51	10EET	Worm Shaft	102	10R3Z	Washer
10	1469K	Handle Assembly	52	100T8	Washer	103	10GFG	Washer
11	101JC	Star Drag Click Plate	53	1005Z	Level Wind Guard	401	101DW	Handle Nut
12	10B27	Click Pin	54	1006J	Level Wind Guide	404	144P9	Star Drag
13	10988	Click Spring	56	144NZ	Yoke Spring	405	10A0C	Star Drag Nut
15	10A78	Star Drag Spring	58	10LVH	Screw	406	144P6	Clutch Button Attachment
17	10J1N	Star Drag Spacer	59	144P7	Clutch Cam Retainer	409	10RWL	Drive Shaft
18	10D60	Drag Spring Washer	60	10559	Screw	410	10PVU	Screw
19	105PW	Bearing Washer	65	10RWD	Clutch Spring Holder	412	13T1U	Yoke
20	10EX8	Ball Bearing	67	103C0	Screw	413	10RWF	Clutch Pawl B
21	1027V	O Ring	68	100BD	Screw	414	10SKS	Clutch Cam
22	144P5	Cast Control Cap	70	10FJB	Pawl Cap	415	10RWC	Clutch Pawl A
23	1057Q	Spacer B	71	10CFW	Washer	416	14026	Clutch Pawl Spring
24	10S37	Ball Bearing	72	100BT	Line Guide Pawl	417	10RW6	Clutch Plate
25	10LA9	O Ring	73	108WQ	O Ring	418	10RVT	Clutch Guard
27	1055J	Screw	74	1469M	Line Guide Pawl Holder Assembly	419	146A0	Frame Assembly
28	105BP	Ball Bearing	76	10LZD	Screw	420	1007C	Clutch Bar Guide
29	144NV	Retainer	77	101GQ	Screw	421	10RW1	Clutch Button
30	1005E	Roller Clutch Bearing	78	103LN	Screw	422	10RWB	Clutch Button Cover
32	10BN3	Roller Clutch Inner Tube	83	10E7H	O Ring	423	100P2	Clutch Pawl Assembly
33	10RW3	Pressure Plate	84	10TNF	O Ring	424	146A1	BR Dial Assembly
34	10RWJ	Drag Washer	85	10MD0	Spool Clutch Pin	425	144NP	B Side Plate
36	10CJ1	Drag Washer	86	1469P	Spool Assembly	426	146A2	B Side Plate Assembly
37	1021K	Anti-Reverse Ratchet	87	141R6	Screw	501	146A3	A Side Plate Assembly
39	10JDX	Idle Gear Spring	88	144NU	Digital Control Assembly	502	13UYH	Drive Gear
40	10HJF	Idle Gear Pin	89	10B94	Bearing Seal	503	1005X	Pinion Gear
41	10057	Idle Gear A	90	144NQ	Spacer B			
42	105NC	E Lock	91	144NM	Washer			

Please note that the number of adjusting washers may not be the same as shown in the exploded views.  
(Adjustment will vary with each individual product.)

(240227)\_003