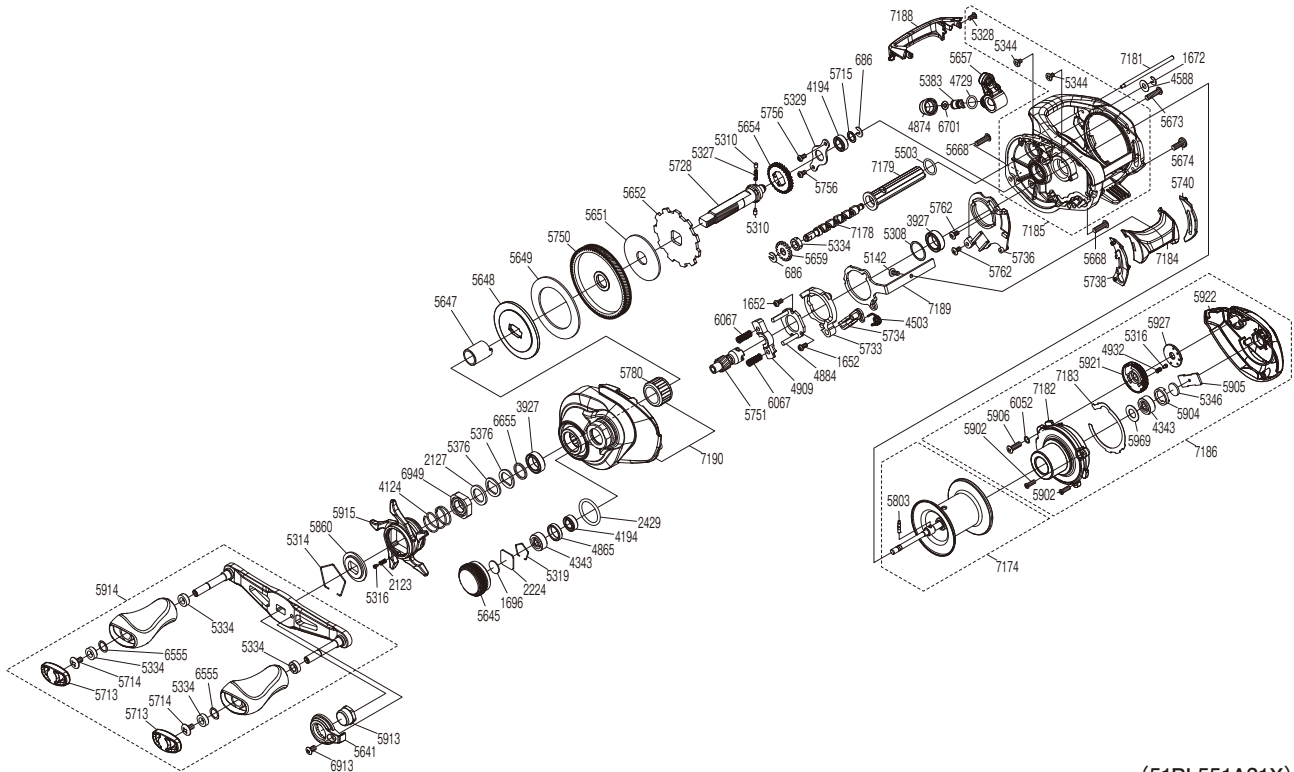


# SHIMANO

## CURADO DC

## CUDC201HG



(51RL551A31X)

#	Part No.	Description	#	Part No.	Description	#	Part No.	Description
686	105NK	E Lock	5376	109F5	Washer	5902	10TBS	Screw
1652	10LVE	Screw	5383	10BHQ	Line Guide Pawl	5904	100Q2	Bearing Retainer
1672	105NC	E Lock	5503	101GT	O Ring	5905	100Q5	Spool Shaft Spacer
1696	10896	Cast Control Spacer B	5641	10SSK	Handle Nut Plate	5906	10LFN	Screw
2123	10BT2	Click Spring	5645	10SRP	Cast Control Cap	5913	10T0Z	Handle Nut
2127	10J1N	Star Drag Spacer	5647	10SRM	Roller Clutch Inner Tube	5914	100E3	Handle Assembly
2224	1085F	Spool Tension Spacer A	5648	10SSR	Key Washer	5915	10TB5	Star Drag
2429	108WK	O Ring	5649	10SSF	Drag Washer C	5921	100E5	Brake Dial
3927	10EX8	Ball Bearing	5651	1023U	Drag Washer A	5922	10TB4	Right Side Plate
4124	10A70	Star Drag Spring	5652	10SSJ	Anti-Reverse Ratchet	5927	100YQ	Click Ring
4194	105BP	Ball Bearing	5654	101K8	Idle Gear	5969	10B94	Bearing Seal
4343	105C3	Ball Bearing	5657	101E0	Line Guide Assembly	6052	100MF	Washer
4503	104CQ	Clutch Pawl Spring	5659	10SRL	Idle Gear C	6067	10SAS	Yoke Spring
4588	10FJZ	Washer	5668	10SXB	Screw	6555	104FH	Washer
4729	108WQ	O Ring	5673	10LHY	Screw	6655	100SE	Washer
4865	10EYS	Bearing Spacer	5674	10SXA	Screw	6701	10CFU	Spacer
4874	10FJB	Pawl Cap	5713	10SS2	Handle Knob Seal	6913	10DV5	Screw
4884	10F3X	Clutch Cam Retainer	5714	10LFA	Screw	6949	10A3U	Star Drag Nut
4909	1046W	Yoke	5715	10G6D	Washer	7174	101MG	Spool Assembly
4932	10GQZ	Click Spring	5728	10EBF	Drive Shaft	7178	101JU	Worm Shaft
5142	10559	Screw	5733	10EB3	Clutch Cam	7179	101JR	Level Wind Guard
5308	10190	Washer	5734	1003W	Clutch Pawl Assembly	7181	101JX	Stabilizer Bar
5310	10HJG	Idle Gear Pin	5736	10EBG	Clutch Guard	7182	101JZ	B Side Plate Substrate
5314	10KXW	Click Plate Retainer	5738	10EBK	Clutch Bar Guide B	7183	10T9T	Washer
5316	10MFC	Click Pin	5740	10EB4	Clutch Bar Guide A	7184	10TKF	Clutch Button
5319	1054D	Bearing Retainer	5750	10EB5	Drive Gear	7185	10RA7	Frame Assembly
5327	10JDY	Idle Gear Spring	5751	10EB9	Pinion Gear	7186	10TKC	Right Side Plate Assembly
5328	10LCQ	Screw	5756	10S3Y	Screw	7188	1019X	Level Wind Protector
5329	109T1	Drive Shaft Retainer	5762	10S57	Screw	7189	1019Y	Clutch Plate
5334	10PXZ	Bushing	5780	1005E	Roller Clutch Bearing	7190	1002U	Left Side Plate
5344	10MPD	Screw	5803	10MD0	Spool Clutch Pin			
5346	10EX5	Spacer	5860	10J26	Star Drag Click Plate			

Please note that the number of adjusting washers may not be the same as shown in the exploded views.  
(Adjustment will vary with each individual product.)

(230612)\_002