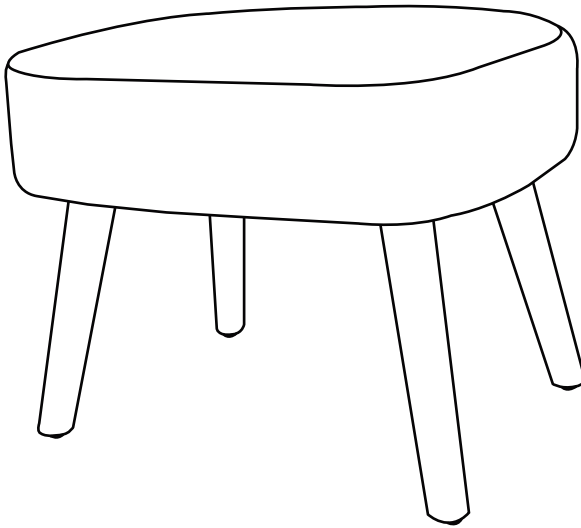


# INSTRUCTION MANUAL



**16.5" Tall Water and Stain Resistant  
Boucle Upholstered Ottoman**

**V1.0**

## ! NOTICE

- Highly recommend immediate clean of the upholstery fabric although it is treated as water and stain repellent. Clean the chair with lukewarm water, mild detergent & soft cloth.
- Please do not exceed the weight limitation of this item. Do not stand on as a step ladder.
- Firmly secure all bolts before use. Reconfirm all bolts are secure every 90 days.
- Please adjust the speed slowly when you use electric drill for assembling to avoid screw slippage.
- Do not use or store this item in the proximity of open flame or flammable/combustible chemicals.

## TOOLS REQUIRED



ALLEN WRENCH  
(PROVIDED)



260LBS  
CAPACITY



1 PERSON  
ASSEMBLY



UP TO 20 MIN.  
ASSEMBLY

## HARDWARE

1

M6 x 25mm  
BOLT



12 PCS

2

ALLEN  
WRENCH



1 PC

## PARTS

A

SEAT



1 PC

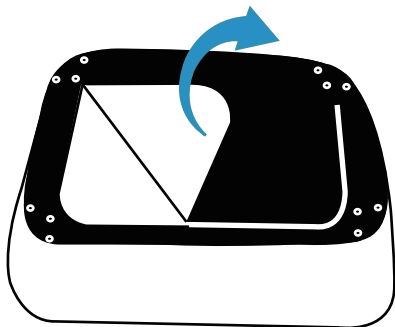
B

WOODEN LEG



With adjustable  
feet leveler

4 PCS

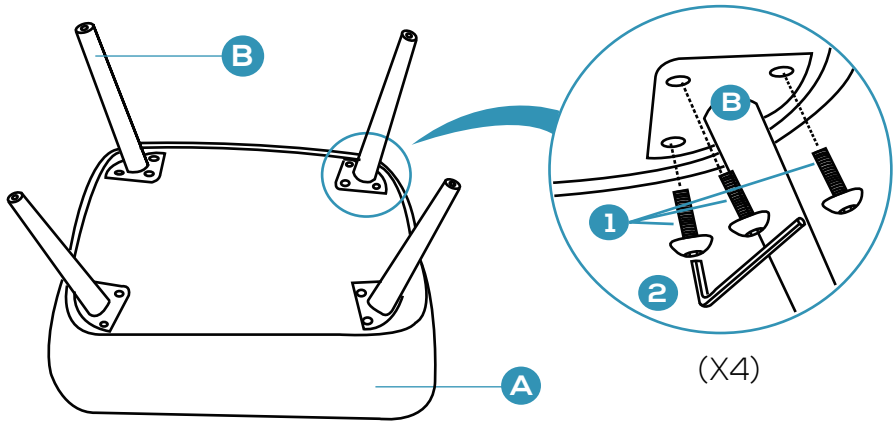


Open the zipper take out legs  
and hardware

## PRODUCT ASSEMBLY

**1**

Attach 4pcs Part B Leg to the bottom with 12pcs Hardware #1 Bolt.



**2**

Place the chair in normal position, sit on the seat and press downward till you feel the legs touch the ground evenly.

Tighten all bolts again.

Adjust feet levelers for perfect balance.

