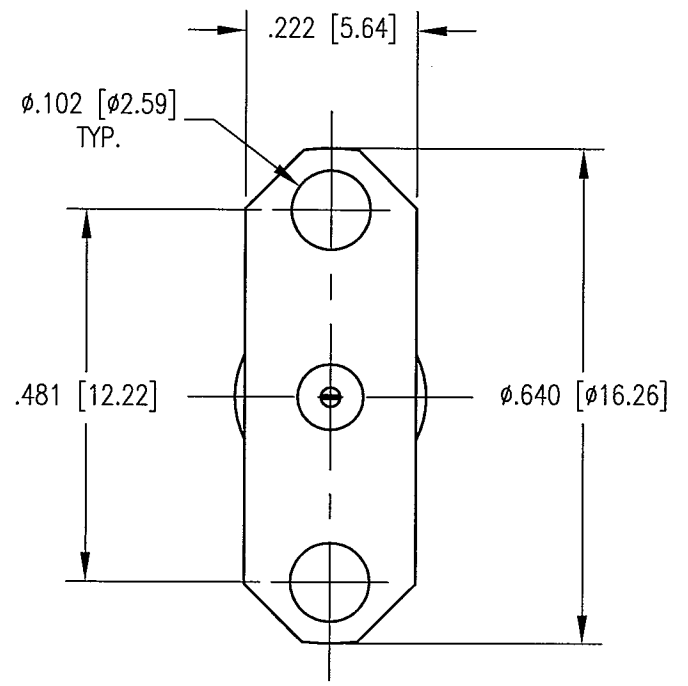
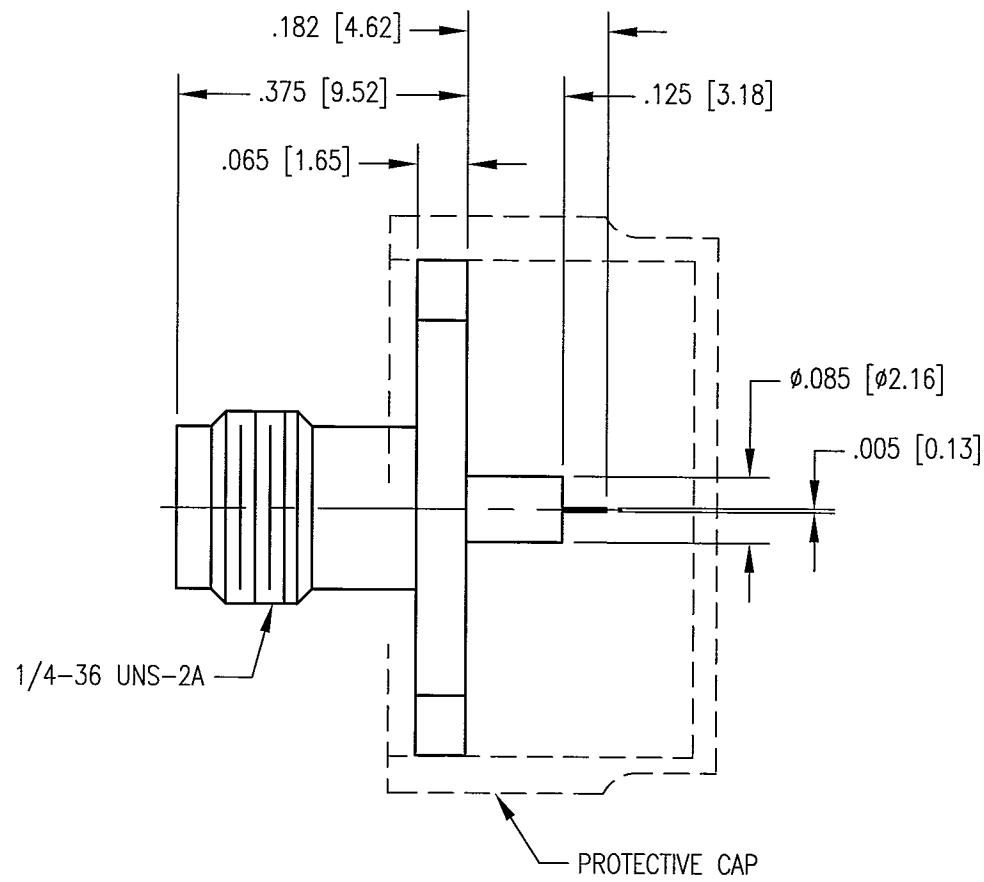


DWG. NO.		251-066-0032G	
REV	DESCRIPTION	BY DATE	APPD
A	RELEASE PER ECR 7392	JMC 6/24/02	JWH



NOTES:

- MATERIALS:
 BODY: STAINLESS STEEL PER ASTM A582
 CONTACT: COPPER ALLOY
 INSULATOR: TEFLON PER ASTM D1710
- FINISH:
 BODY: .000015 MIN. GOLD PER MIL-G-45204 OVER
 .000050 MIN. NICKEL PER QQ-N-290
 CONTACT: .000030 MIN. GOLD PER MIL-G-45204 OVER
 .000050 MIN. NICKEL PER QQ-N-290

PER ASME Y14.5M-1994 UNLESS OTHERWISE SPECIFIED: DIMENSIONS ARE IN INCHES [MM]		NORTHROP GRUMMAN	
TOLERANCES: DECIMALS .XX ± .01 [0.254] .XXX ± .005 [0.127] ANGLES ± 2°		Winchester Electronics 400 Park Road Watertown, CT 06795	
SCALE 4:1		TITLE	
CUSTOMER DRAWING		STRAIGHT SMA FLANGE MOUNT JACK WITH TAB CONTACT	
DRAWN	DATE	CHECKED	DATE
KJT	10/12/00	JWH	10/18/00
APPROVED	DATE	APPROVED	DATE
JMC	10/18/00	JED	10/18/00
A	251-066-0032G	SHT.	OF
		1	1
		REV.	
		A	