

15014A

Airtight Shallow Housing 5" IC Line Voltage

Product Description

Suitable for new construction in residential and commercial applications.
IC rated. Suitable for direct contact with insulation.

Construction
Airtight housing limits the exchange of air between ceiling plenum and heated/cooled areas. Washington State Energy Code approved to meet restricted airflow requirements. Adjustable socket bracket assures proper and consistent lamp positioning. 7 1/2" height allows use in 2" x 8" joist construction.

Plaster Frame
Housing is secured to plaster frame with screws and can be removed for access to junction box. Housing adjusts from 1/2" to 1 1/2" to accommodate ceiling thickness.

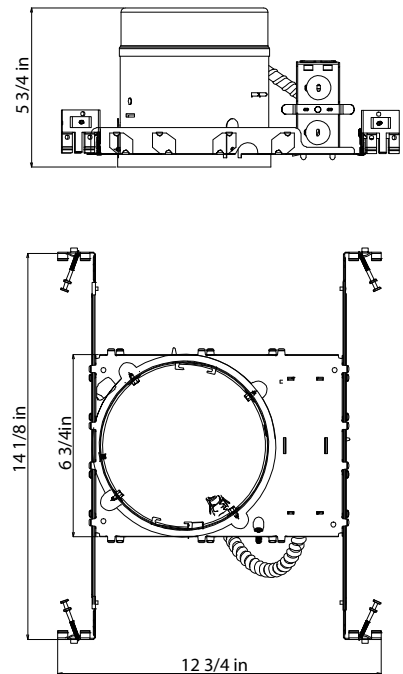
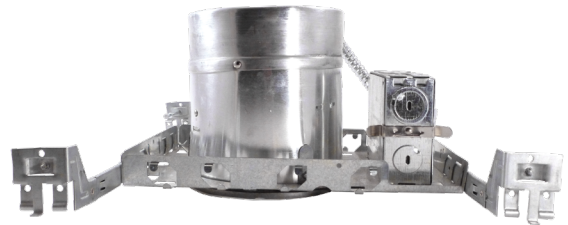
Junction Box
Listed for through branch circuit wiring and includes several 3/4" knockouts. Four pry-outs with integral strain relief simplify Romex installation. Supplied with three push-in wire connectors.

Installation
Heavy-gauge NICOR captive hanger bars provide greater stability, allowing housing to be positioned at any point within a 24" joist span, then locked in place with set screws. Unique hanger bar lip design helps align can to joist. Four double-headed captive nails provide for ease of installation. Bars can be repositioned 90° on plaster frame without tools. Bars fit onto T-bar spine for quick alignment and can be permanently secured. Score lines allow bars to be shortened without tools to accommodate a 12" joist span.


Project


Catalog


Type




15014A Airtight Shallow Housing

Eyeball 	Order No	Color	Maximum Lamp Rating
	15506BK	Black (shown)	75W BR30/PAR30 OD: 6 1/2"
	15506PB	Polished Brass	
	15506OB	Oil Rubbed Bronze	
	15506WH	White	

Shower Trim 	Order No	Color	Maximum Lamp Rating
	15509	White (shown)	40W A19 1X13W PL OD: 6 1/2" Wet Location
	15509OB	Oil Rubbed Bronze	

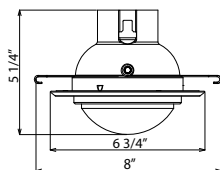
Splay 	Order No	Color	Maximum Lamp Rating
	15510	White (shown)	75W BR30/PAR30 OD: 6 1/2" Wet Location

Baffle 	Order No	Color	Maximum Lamp Rating
	15511BK	Black	75W BR30/PAR30 OD: 6 1/2"
	15511BZ	Bronze	
	15511NK	Nickel	
	15511OB-ABZ	Oil Rubbed Bronze (Aged Bronze Ring)	
	15511OB-OB	Oil Rubbed Bronze (Oil Rubbed Bronze Ring) (shown)	
	15511WH	White	

Shallow Cone Baffle 	Order No	Color	Maximum Lamp Rating
	15512	Black	75W PAR30L 50W PAR30S OD: 6 1/2"

15014A Airtight Shallow Housing

Dome Shower Trim



Order No

15517WH

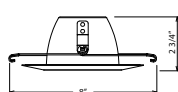
Color

White

Maximum Lamp Rating

40W | A19
1 x 13W PL
OD: 6 3/4"

Open Trim



Order No

15519WH

Color

White

Maximum Lamp Rating

50W | PAR30S
OD: 6 1/2"