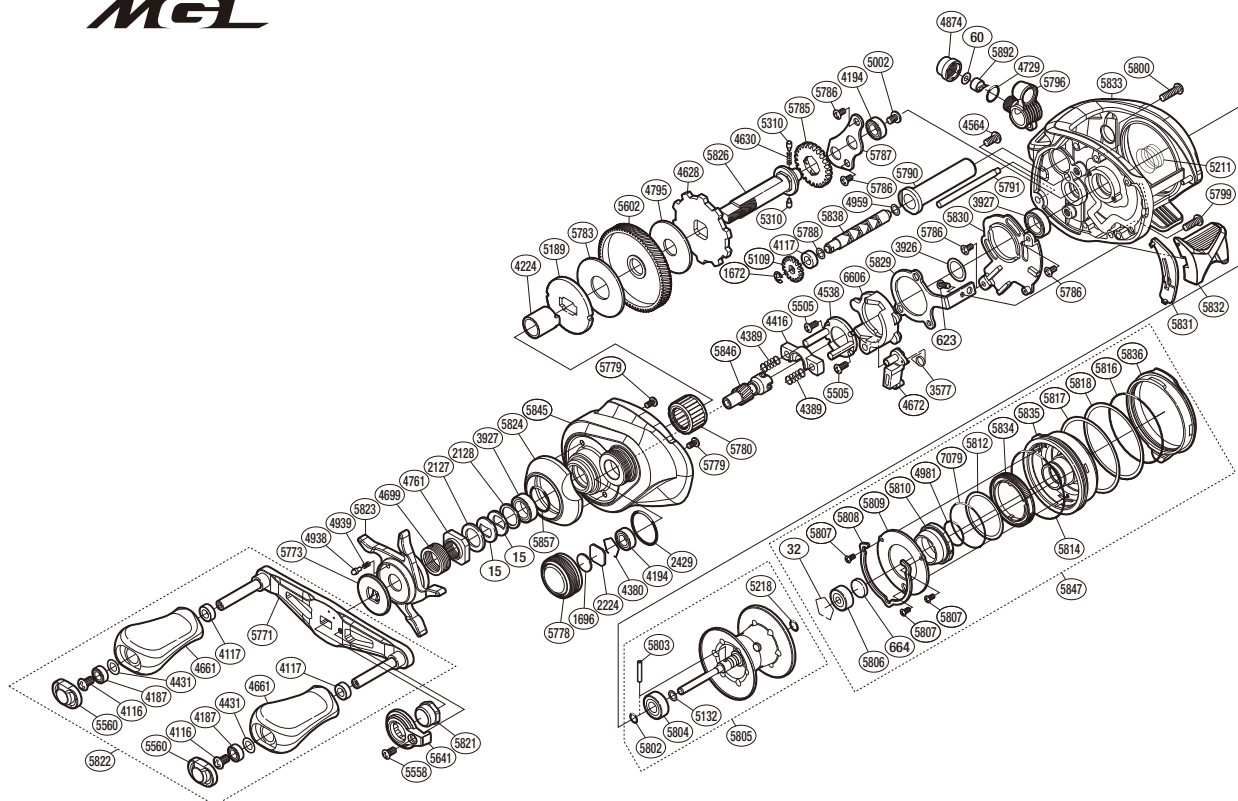


SHIMANO

Bantam MGL

BTM MGL-HGL



(51RL105000X)

#	Part No.	Description	#	Part No.	Description	#	Part No.	Description
0015	10D60	Drag Spring Washer	4938	10B27	Click Pin	5805	10TB0	Spool Assembly (With Bearing)
0032	10GEW	Bearing Retainer	4939	10988	Click Spring	5806	10S37	Ball Bearing
0060	10CFW	Spacer	4959	10GFJ	Washer	5807	1026U	Screw
0623	103C0	Screw	4981	10LA8	O Ring	5808	10TUC	Cam Lever Retainer
0664	1057S	Spacer B	5002	10PVU	Screw	5809	10TUB	Br Dial Retainer Plate
1672	105NC	E Lock	5109	10FNX	Idle Gear	5810	10TB6	Brake Pipe Gear Assembly
1696	10896	Cast Control Spacer	5132	10GN1	Washer	5812	1006Q	Washer
2127	10J1N	Star Drag Spacer	5189	10D3J	Pressure Plate	5814	108WZ	O Ring
2128	105PW	Bearing Washer	5211	10EZE	Bearing Pressure Spring	5816	1006P	O Ring
2224	1085F	Spool Tension Spacer	5218	10EZ7	O Ring	5817	10073	Washer
2429	108WK	O Ring	5310	10HJG	Idle Gear Pin	5818	10078	Washer
3577	10N1V	Clutch Pawl Spring	5505	10LVJ	Screw	5821	100G5	Handle Nut
3926	10G8C	Washer	5558	10R1Q	Screw	5822	10TTP	Handle Assembly
3927	10EX8	Ball Bearing	5560	10FMM	Handle Knob Seal	5823	1006K	Star Drag
4116	103E9	Screw	5602	1021R	Drive Gear	5824	1005Y	Clutch Button Attachment
4117	10PXY	Bushing	5641	10SSK	Handle Nut Plate	5826	1007B	Drive Shaft
4187	104VX	Ball Bearing	5771	10TB7	Handle Shank Assembly	5829	1005B	Clutch Plate
4194	105BP	Ball Bearing	5773	1007F	Star Drag Click Plate	5830	10062	Clutch Guard
4224	10BN3	Roller Clutch Inner Tube	5778	10060	Cast Control Cap	5831	1007C	Clutch Bar Guide B
4380	1057X	Retainer	5779	1055D	Screw	5832	10TT3	Clutch Lever Assembly
4389	104BU	Yoke Spring	5780	1005E	Roller Clutch Bearing	5833	100KC	Frame Assembly
4416	10471	Yoke	5783	1027W	Drag Washer	5834	10055	Br Dial
4431	10G8G	Washer	5785	10057	Idle Gear	5835	100QM	Brake Case Assembly
4538	10F42	Clutch Cam Retainer	5786	10MT4	Screw	5836	1005T	Right Side Plate Cam Lever
4564	10LZD	Screw	5787	1005S	Drive Shaft Retainer	5838	1006R	Worm Shaft
4628	10D6Y	Anti-Reverse Ratchet	5788	10R3Z	Washer	5845	1006D	Left Side Plate
4630	10JDX	Idle Gear Spring	5790	1005Z	Level Wind Guard	5846	1005X	Pinion Gear
4661	1032A	Handle Knob	5791	1006J	Level Wind Guide	5847	100QH	Right Side Plate Assembly
4672	105ZV	Clutch Pawl	5796	100QL	Line Guide Pawl Holder Assembly	5857	1027V	O Ring
4699	10A71	Star Drag Spring	5799	101GQ	Screw	5892	10211	Line Guide Pawl
4729	108WQ	O Ring	5800	103LN	Screw	6606	10SKS	Clutch Cam
4761	10A0C	Star Drag Nut	5802	10TNF	O Ring	7079	10CG0	O Ring
4795	10CJ1	Drag Washer	5803	10MD0	Spool Clutch Pin			
4874	10FJB	Pawl Cap	5804	1005D	Ball Bearing	4692	10LQ0	B-100 Oil (Accessory)

Please note that the number of adjusting washers may not be the same as shown in the exploded views.
(Adjustment will vary with each individual product.)

(240329)_012